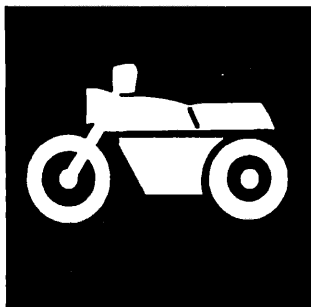


YAMAHA



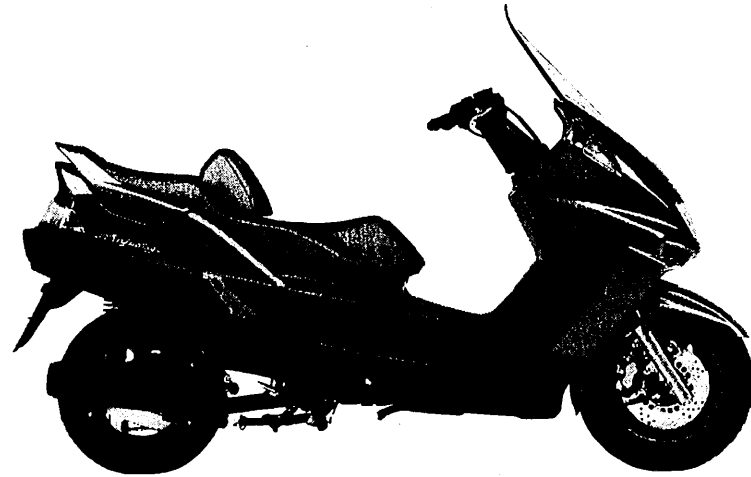
**PARTS
CATALOGUE**

YP250'97 (4UC2)

YP250'97 (4UD2) EUROPE

YAMAHA
GENUINE
Parts & Accessories

174UC-300E1



A3

FOREWORD

This Parts Catalogue is related to the parts for the model(s) in the below frame. When you are ordering replacement parts, please refer to this Parts Catalogue and quote both part numbers and part names correctly.

YP250'97(4UC2/4UD2)

1. Modifications or additions which have been made after issue of the Parts Catalogue will be announced in the Yamaha Parts News.
It is advisable that you make necessary corrections to the Parts Catalogue according to the Yamaha Parts News.

2. Abbreviations
The following abbreviations are used in this Parts Catalogue.

"UR" Use specified parts number.
 "UN" Use as many as needed.
 "AP" Alternate Parts
 "LM" Local Made (Parts need to be ordered locally)
 "F#" Frame No. (Applicable machine No.)

3. Parts, which are to be supplied in an assembly, are listed with a dot (.) in front of the part name as shown below.

EXAMPLE

CARBURETOR ASSY
 . JET, PILOT
 . NOZZLE, MAIN

4. Number of component for assembly
The numeral appearing to the right of each component part indicates the quantity of parts for each assembly unit.

EXAMPLE

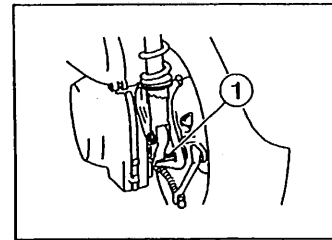
PART NO.	DESCRIPTION	Q'TY	REMARKS
2F5-83310-60	FRONT FLASHER LIGHT ASSY	2	
115-83311-60	. BULB (6V-18W)	1	

5. Applicable colors of graphics are represented in the "REMARKS" as shown below.

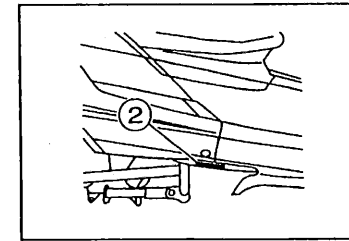
PART NO.	DESCRIPTION	Q'TY	REMARKS
2N4-24110-00-X5	FUEL TANK COMP.	1	MAXIM RED
3J1-24240-10	. GRAPHIC, FUEL TANK	1	for MXR

6. Applicable Serial No.

① Engine Serial No.



② Frame Serial No.

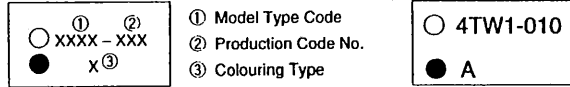


7. Note that the illustrations are for reference in finding parts numbers, not to be used for assembling. When assembling, please use the applicable service manual.
8. The asterisk (*) before a reference number indicates modification items after the first edition.

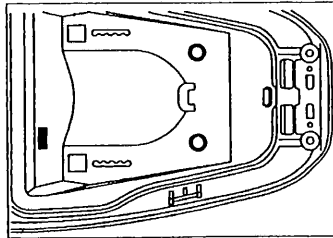
MODEL LABEL

(1) A label called "Model Label" is affixed in the location as indicated in (3) below. When using this parts catalogue, please be sure to cross-refer the "model code – production code No." in the catalogue to the "model code – production code No." indicated on the Model Label affixed onto the product concerned.

(2) "Model Label" Indication



(3) Model Label Affixing Location



(4) Model Code – Production Code Number of Model Listed in This Parts Catalog

Model code	Production code No.	Country (destination)	Model code	Production code No.	Country (destination)
4UC2	020	BELGIUM			
	050	ENGLAND			
	060	GREECE			
	070	ITALY			
	080	HOLLAND			
	090	NORWAY			
	100	PORTUGAL			
4UD2	110	SWEDEN			
	010	SWITZERLAND			
	020	AUSTRIA			

(5) Colouring Information

Colouring type code	Colour code	Colour Name	Abbreviation
A	0564	DEEP PURPLISH BLUE METALLIC C	DPBMC
B	003H	NEW SILVER DUST	NSD
C	0376	DEEP RED COCKTAIL 2	DRC2
D	004B	BLACK 2	BL2

CONTENTS

ENGINE

Cylinder	B2
Crankshaft, Piston	B3
Valve	B4
Camshaft, Chain.....	B5
Water Pump	B6
Radiator, Hose	B7~B8
Oil Pump	B9
Intake	B10
Carburetor	B11~B12
Exhaust	B13
Crankcase	B14
Crankcase Cover 1.....	B15
Starter	C2
Clutch	C3~C4
Transmission	C5

CHASSIS

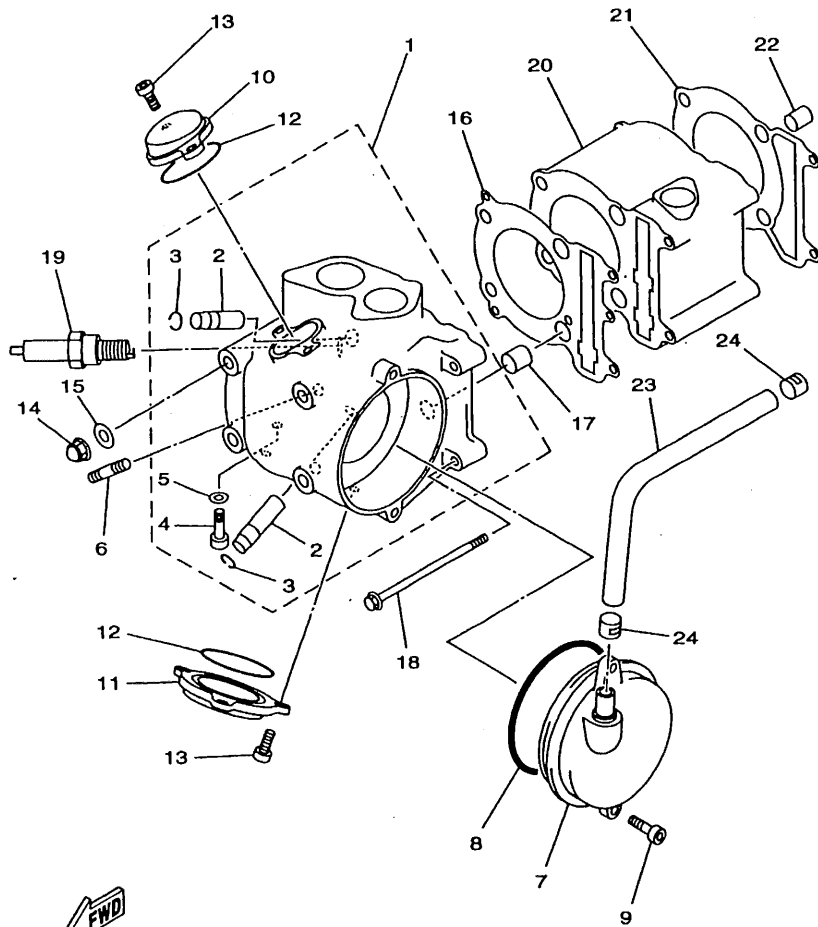
Frame	C6
Fender	C7
Side Cover	C8~C9
Rear Arm, Suspension	C10
Steering	C11~C12
Fuel Tank	C13
Seat	C14~C15
Front Wheel	D2
Front Brake Caliper	D3
Rear Wheel	D4
Steering Handle, Cable	D5~D6
Front Master Cylinder	D7

Stand, Footrest.....	D8~D9
Leg Shield	D10~D11
Generator	D12
Starting Motor	D13
Flasher Light.....	D14
Meter	D15
Headlight	E2
Taillight	E3
Handle Switch, Lever	E4
Electrical 1	E5
Electrical 2.....	E6

INDEX

Numerical Index	M1~M3
-----------------------	-------

FIG. 1 CYLINDER



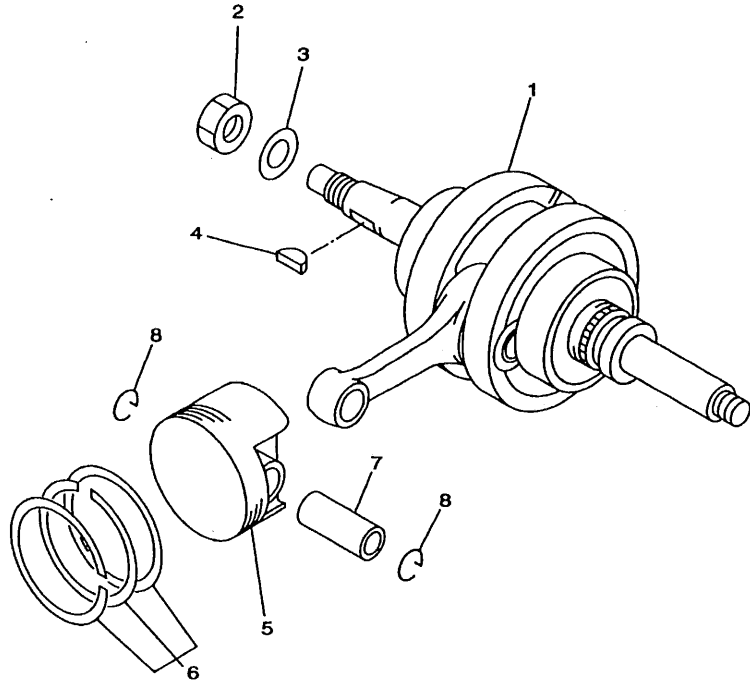
REF. NO.	PART NO.	DESCRIPTION			REMARKS
			4UC2	4UD2	
1	4HC-11101-00	CYLINDER HEAD ASSY	1	1	
2	4G0-11133-10	.GUIDE, INTAKE VALVE	2	2	
3	93440-10085	.CIRCLIP	2	2	
4	90153-06029	.SCREW, HEXAGON	1	1	
5	90430-06014	.GASKET	1	1	
6	95617-08620	BOLT, STUD	2	2	
7	4HC-11160-00	BREATHER ASSY	1	1	
8	93210-92448	O-RING	1	1	
9	91317-06020	BOLT	2	2	
10	3GC-11186-00	COVER, CYLINDER HEAD SIDE 2	1	1	
11	3GC-11187-00	COVER, CYLINDER HEAD SIDE 3	1	1	
12	93210-57634	O-RING	2	2	
13	91317-06020	BOLT	5	5	
14	90176-08026	NUT, CROWN	4	4	
15	90201-08609	WASHER, PLATE	4	4	
16	4HC-11181-00	GASKET, CYLINDER HEAD 1	1	1	
17	89530-14016	PIN, DOWEL	2	2	
18	95027-06120	BOLT, FLANGE	2	2	
19	94701-00333	PLUG, SPARK (NGK DR8EA)	1	1	
20	4HC-11311-00	CYLINDER 1	1	1	
21	4HC-11351-00	GASKET, CYLINDER	1	1	
22	99510-10114	PIN, DOWEL	2	2	
23	4HC-11166-00	PIPE, BREATHER 1	1	1	
24	90467-13064	CLIP	2	2	



4HC1010-5010

B2

FIG. 2 CRANKSHAFT. PISTON



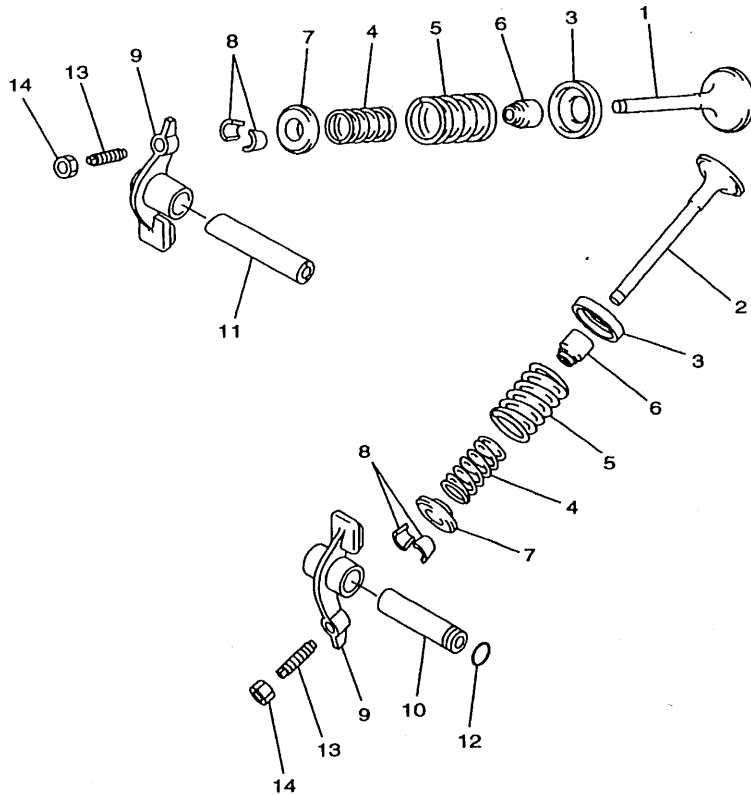
REF. NO.	PART NO.	DESCRIPTION	4UC2	4UD2				REMARKS
1	4HC-11400-00	CRANKSHAFT ASSY	1	1				
2	90170-16182	NUT	1	1				
3	90201-160F6	WASHER, PLATE	1	1				
4	90280-05013	KEY, WOODRUFF	1	1				
5	4HC-11631-00-97	PISTON (STD)	1	1				
	4HC-11636-00	PISTON (0.50MM O/S)	1	1				AP
	4HC-11638-00	PISTON (1.00MM O/S)	1	1				AP
6	4HC-11603-00	PISTON RING SET (STD)	1	1				
	4HC-11605-00	PISTON RING SET (0.50MM O/S)	1	1				AP
	4HC-11607-00	PISTON RING SET (1.00MM O/S)	1	1				AP
7	4JH-11633-00	PIN, PISTON	1	1				
8	90468-12069	CLIP	2	2				



4HC1010-5020

B3

FIG. 3 VALVE



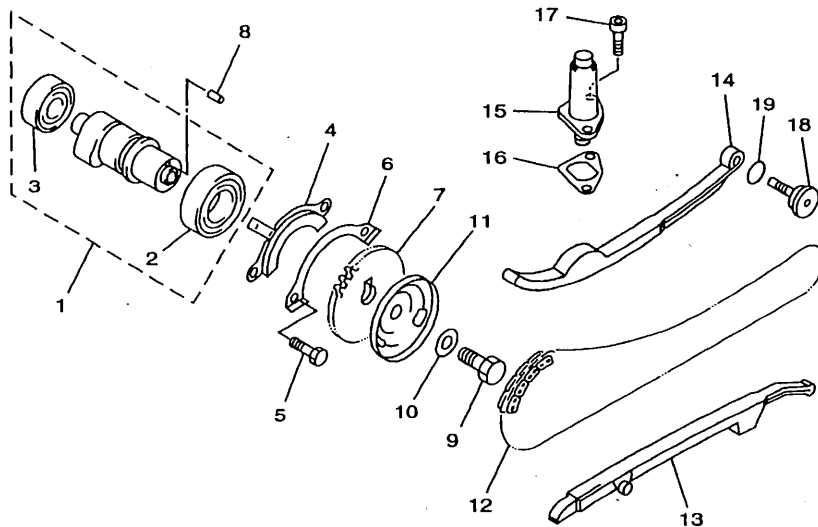
REF. NO.	PART NO.	DESCRIPTION	4UC2	4UD2	REMARKS
1	5H0-12111-00	VALVE, INTAKE	1	1	
2	5H0-12121-00	VALVE, EXHAUST	1	1	
3	4G0-12116-01	SEAT, VALVE SPRING	2	2	
4	4HC-12113-00	SPRING, VALVE INNER	2	2	
5	4HC-12114-00	SPRING, VALVE OUTER	2	2	
6	5H0-12119-00	SEAL, VALVE STEM	2	2	
7	4G0-12117-00	RETAINER, VALVE SPRING	2	2	
8	4G0-12118-00	COTTER, VALVE	4	4	
9	36X-12151-00	ARM, VALVE ROCKER	2	2	
10	3Y1-12156-00	SHAFT, ROCKER 2	1	1	
11	5H0-12146-00	SHAFT, ROCKER	1	1	
12	93210-09165	O-RING	1	1	
13	2NX-12159-00	SCREW, VALVE ADJUSTING	2	2	
14	90170-06128	NUT	2	2	



4HC1010-5030

B4

FIG. 4 CAMSHAFT. CHAIN



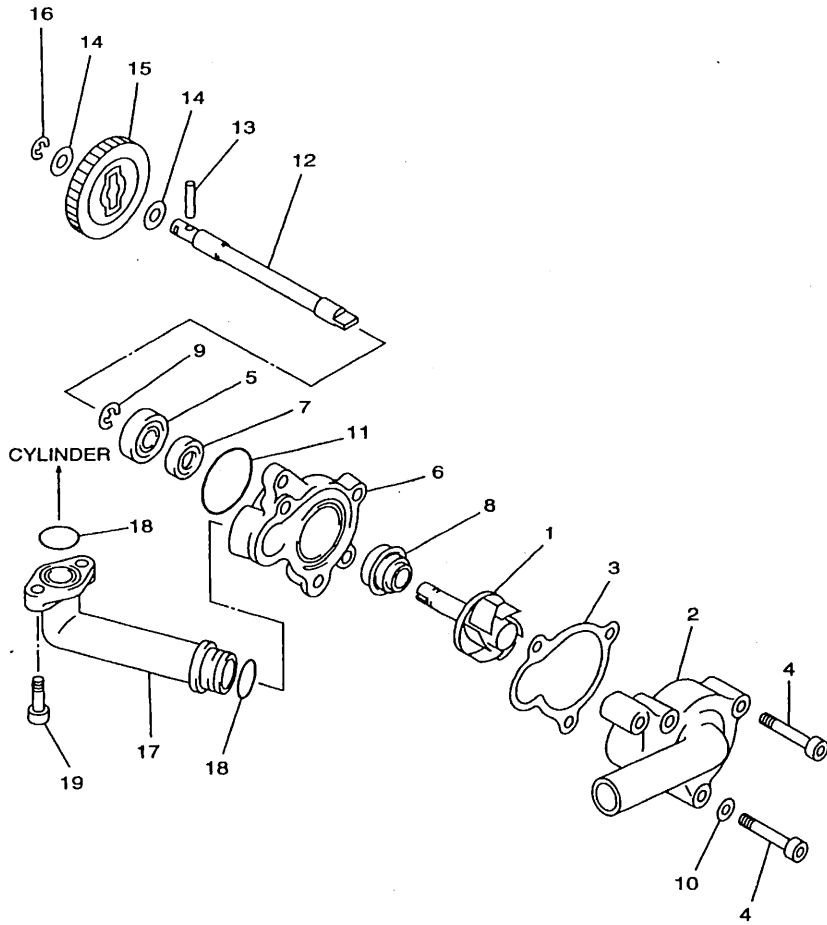
REF. NO.	PART NO.	DESCRIPTION	4UC2	4UD2	REMARKS
1	4HC-12170-00	CAMSHAFT ASSY 1	1	1	
2	93306-00518	.BEARING	1	1	
3	93306-20204	.BEARING (B6202Z)	1	1	
4	4GA-1111F-00	PLATE	1	1	
5	97007-06012	BOLT	2	2	
6	90215-06184	WASHER, LOCK	1	1	
7	4HC-12176-00	SPROCKET, CAM CHAIN	1	1	
8	93604-10011	PIN, DOWEL	1	1	
9	90101-10303	BOLT	1	1	
10	90201-10591	WASHER, PLATE	1	1	
11	4KB-11145-00	PLATE, BREATHER 2	1	1	
12	94581-63104	CHAIN	1	1	
13	4HC-12231-00	GUIDE, STOPPER 1	1	1	
14	4HC-12241-00	GUIDE, STOPPER 2	1	1	
15	2UJ-12210-01	TENSIONER ASSY, CAM CHAIN	1	1	
16	3DM-12213-00	GASKET, TENSIONER CASE	1	1	
17	91317-06014	BOLT	2	2	
18	4HC-12157-00	BOLT	1	1	
19	93210-15171	O-RING	1	1	



4HC1010-5040

B5

FIG. 5 WATER PUMP



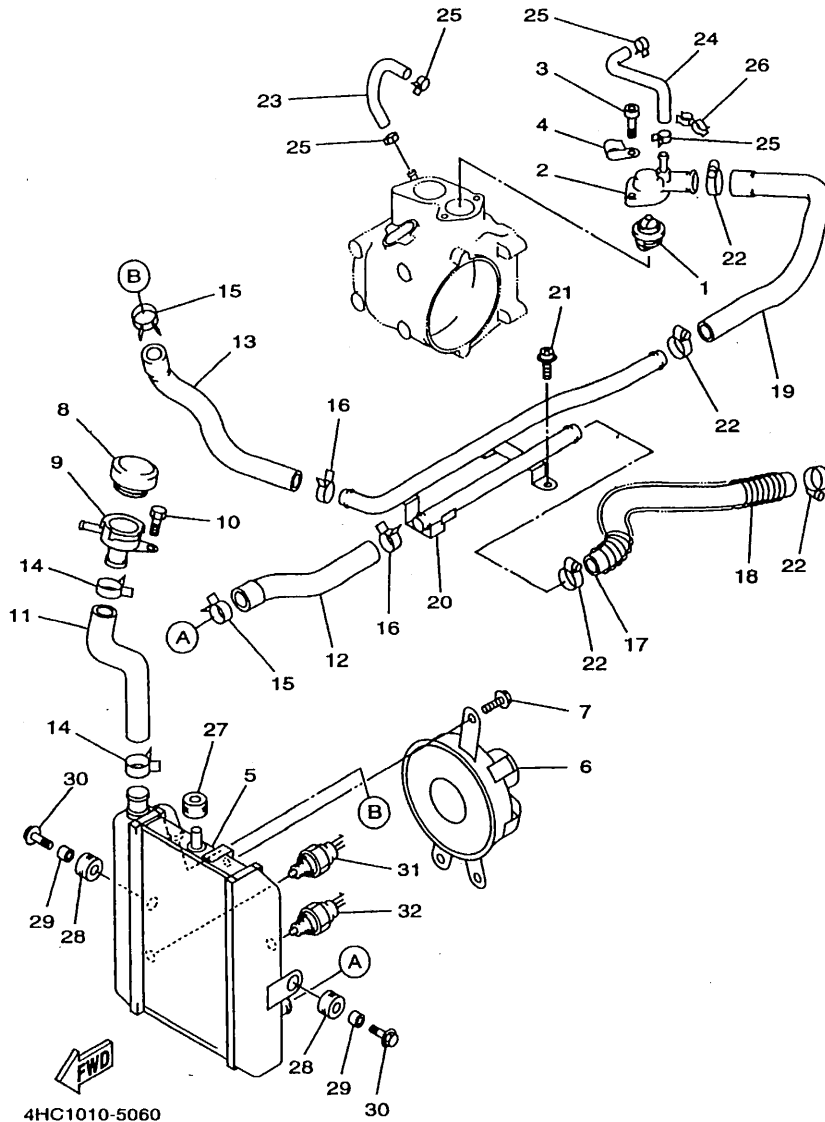
REF. NO.	PART NO.	DESCRIPTION	4UC2	4UD2	REMARKS
1	4HC-12450-00	IMPELLER SHAFT ASSY	1	1	
2	4HC-12422-00	COVER, HOUSING	1	1	
3	4HC-12428-00	GASKET, HOUSING COVER 2	1	1	
4	91317-06035	BOLT	3	3	
5	93306-00006	BEARING (B6000)	1	1	
6	4HC-12421-00	HOUSING, WATER PUMP	1	1	
7	93101-10090	OIL SEAL	1	1	
8	11H-12438-00	SEAL, MECHANICAL	1	1	
9	99009-10400	CIRCLIP	1	1	
10	90430-06014	GASKET	1	1	
11	93210-33133	O-RING	1	1	
12	4HC-12426-00	SHAFT	1	1	
13	93603-22028	PIN, DOWEL	1	1	
14	90201-08512	WASHER, PLATE	2	2	
15	4HC-12459-00	GEAR, IMPELLER SHAFT	1	1	
16	99001-07600	CIRCLIP	1	1	
17	4HC-12446-00	JOINT	1	1	
18	93210-16275	O-RING	2	2	
19	91317-06016	BOLT	2	2	



4HC1010-5050

B6

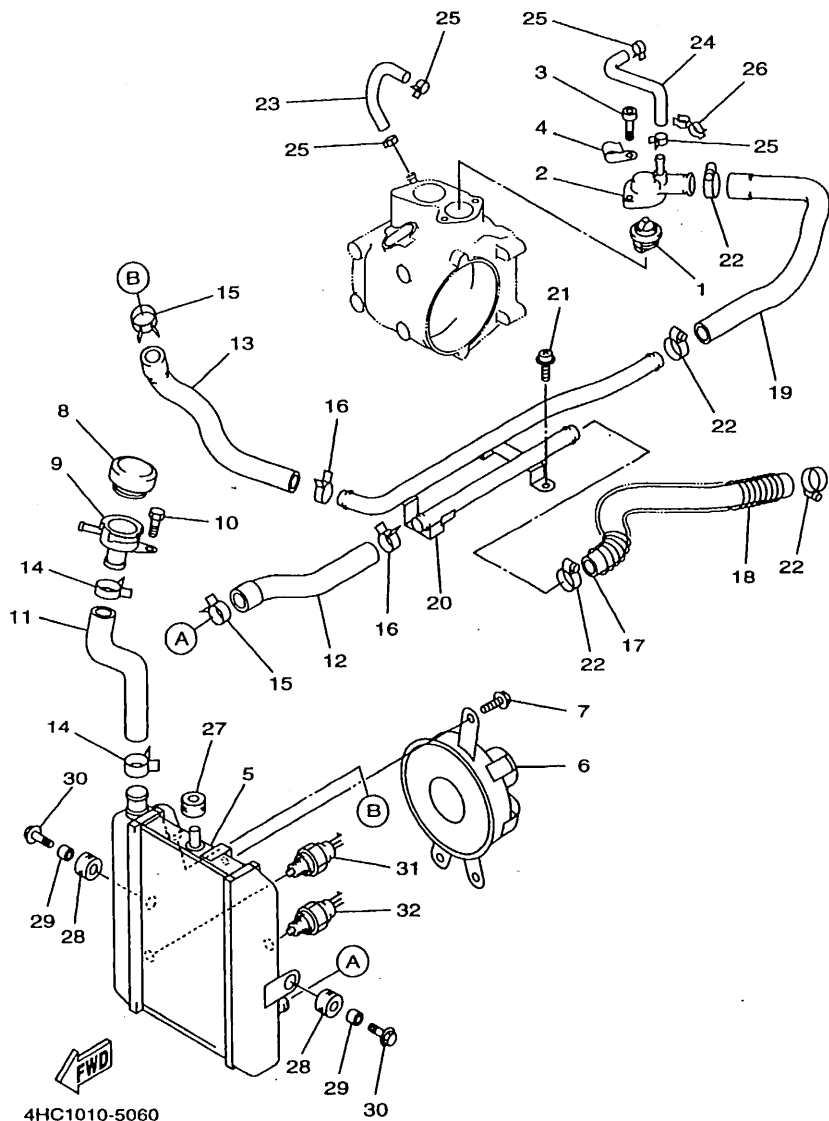
FIG. 6 RADIATOR. HOSE



REF. NO.	PART NO.	DESCRIPTION	4UC2	4UD2	REMARKS
1	4HC-12411-00	THERMOSTAT	1	1	
2	4HC-12413-00	COVER, THERMOSTAT	1	1	
3	91317-06020	BOLT	2	2	
4	90462-08128	CLAMP	1	1	
5	4UC-12461-00	RADIATOR ASSY	1	1	
6	4HC-12405-00	BLOWER ASSY	1	1	
7	95024-06010	BOLT, FLANGE	3	3	
8	4HC-12462-00	CAP, RADIATOR	1	1	
9	4HC-12591-00	SUPT, FILLER NECK	1	1	
10	97007-05012	BOLT	1	1	
11	4HC-12481-00	PIPE 1	1	1	
12	4HC-12482-00	PIPE 2	1	1	
13	4HC-12483-00	PIPE 3	1	1	
14	90467-26131	CLIP	2	2	
15	90467-23177	CLIP	2	2	
16	90467-22097	CLIP	2	2	
17	4HC-12484-00	PIPE 4	1	1	
18	90501-106J4	SPRING, COMPRESSION	1	1	
19	4HC-12485-00	PIPE 5	1	1	
20	4HC-12476-00	PIPE 6	1	1	
21	90159-06093	SCREW, WITH WASHER	3	3	
22	90460-27219	CLAMP, HOSE	4	4	
23	4HC-12576-00	HOSE 1	1	1	
24	4HC-12577-00	HOSE 2	1	1	
25	90467-10035	CLIP	4	4	
26	90464-13103	CLAMP	1	1	
27	90480-18276	GROMMET	1	1	

B7

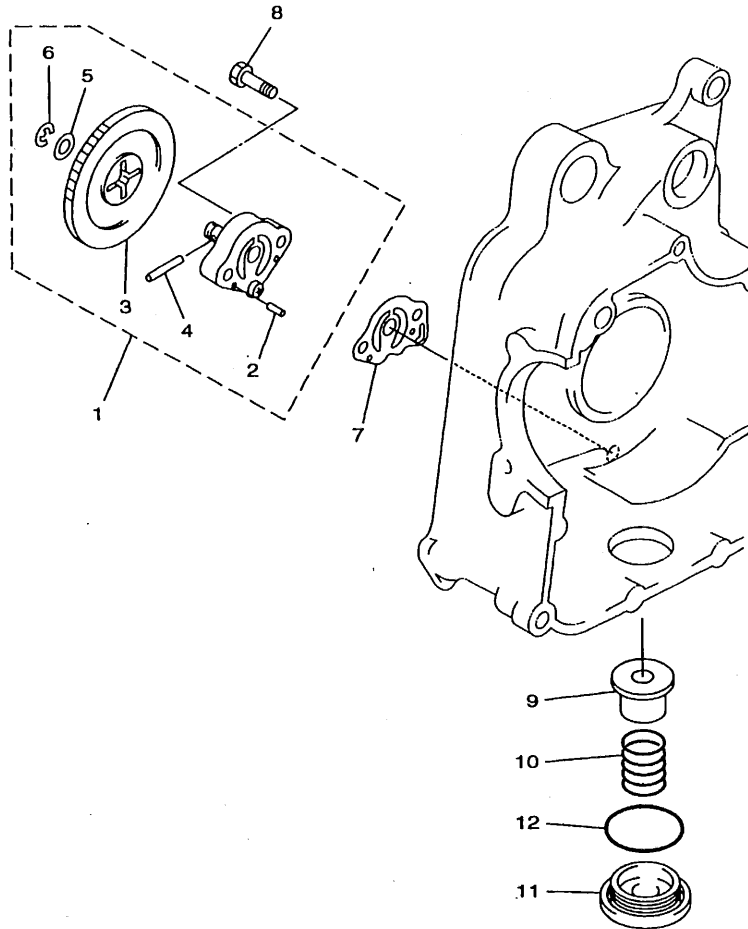
FIG. 6 RADIATOR. HOSE



REF. NO.	PART NO.	DESCRIPTION	4UC2	4UD2	REMARKS
28	90480-16301	GROMMET	2	2	
29	90387-07390	COLLAR	2	2	
30	90119-06118	BOLT, WITH WASHER	2	2	
31	4UC-82560-00	THERMO SWITCH ASSY	1	1	
32	4HC-82560-00	THERMO SWITCH ASSY	1	1	

B8

FIG. 7 OIL PUMP



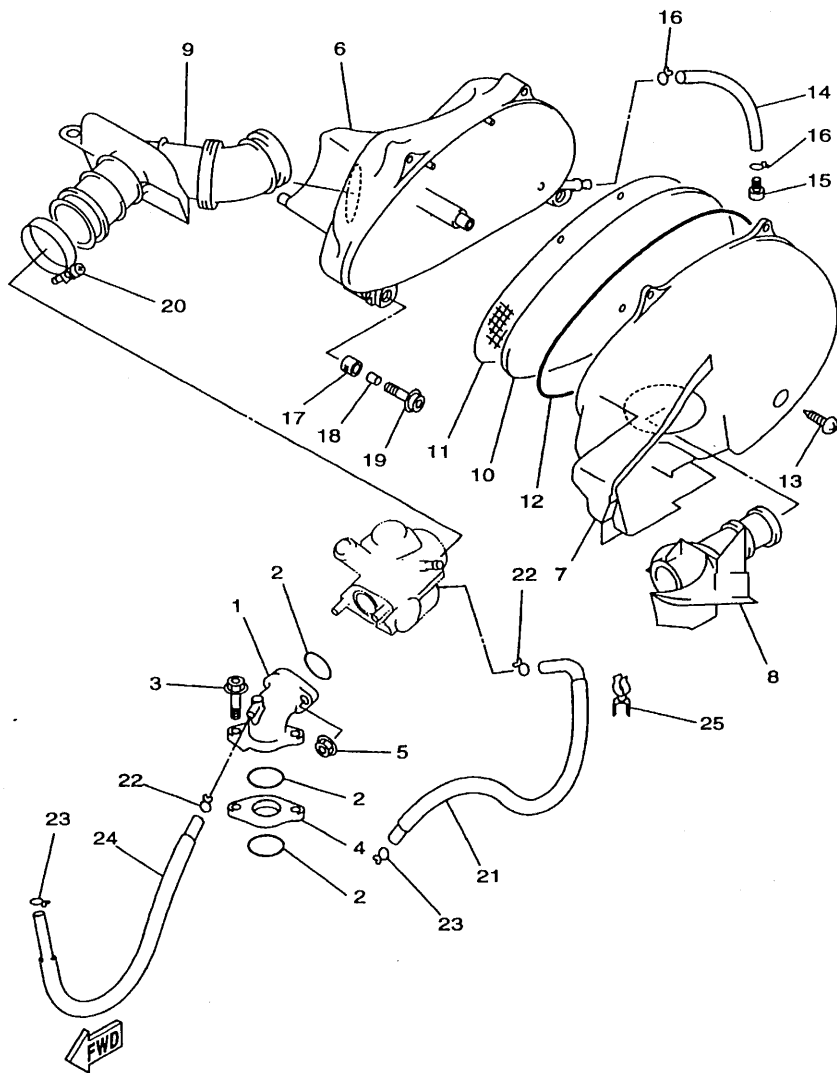
REF. NO.	PART NO.	DESCRIPTION	4UC2	4UD2	REMARKS
1	4HC-13300-00	OIL PUMP ASSY	1	1	
2	93603-12221	.PIN, DOWEL	2	2	
3	4HC-13325-00	.GEAR, PUMP DRIVEN	1	1	
4	93603-22028	.PIN, DOWEL	1	1	
5	90201-08512	.WASHER, PLATE	1	1	
6	99001-06600	.CIRCLIP	1	1	
7	4HC-13475-00	GASKET	1	1	
8	92017-06025	BOLT, BUTTON HEAD	2	2	
9	51Y-13411-00	STRAINER, OIL	1	1	
10	90501-18576	SPRING, COMPRESSION	1	1	
11	30X-15351-00	PLUG, DRAIN	1	1	
12	93210-35520	O-RING	1	1	



4HC1010-5070

B9

FIG. 8 INTAKE

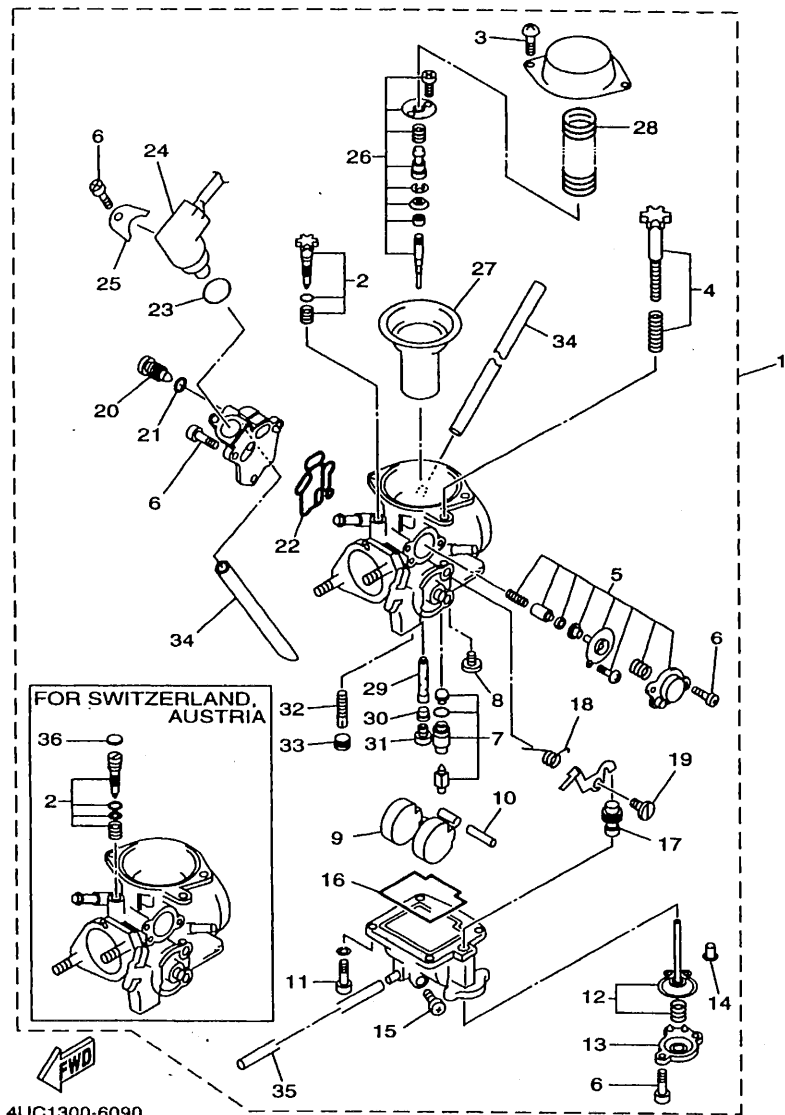


4HC1010-5080

REF. NO.	PART NO.	DESCRIPTION	4UC2	4UD2	REMARKS
1	4HC-13586-00	JOINT, CARBURETOR 1	1	1	
2	93210-35537	O-RING	3	3	
3	90109-067E6	BOLT	2	2	
4	4HC-13595-00	JOINT	1	1	
5	95707-06500	NUT, FLANGE	2	2	
6	4HC-14411-00	CASE, AIR CLEANER 1	1	1	
7	4HC-14412-00	CAP, CLEANER CASE 1	1	1	
8	4HC-14437-00	DUCT	1	1	
9	4HC-14453-00	JOINT, AIR CLEANER 1	1	1	
10	4HC-14451-00	ELEMENT, AIR CLEANER	1	1	
11	4HC-14472-00	PLATE, ELEMENT	1	1	
12	4HC-14452-00	SEAL	1	1	
13	97707-50125	SCREW, TAPPING	5	5	
14	90446-11303	HOSE	1	1	
15	90338-08174	PLUG	1	1	
16	90467-10008	CLIP	2	2	
17	90480-13598	GROMMET	2	2	
18	90387-064W3	COLLAR	2	2	
19	90109-067E6	BOLT	2	2	
20	90460-56105	CLAMP, HOSE	1	1	
21	4HC-14294-00	HOSE	1	1	
22	90467-09006	CLIP	2	2	
23	90467-10008	CLIP	2	2	
24	4HC-13929-00	PIPE, IMPULSE	1	1	
25	90464-13103	CLAMP	1	1	

B10

FIG. 9 CARBURETOR

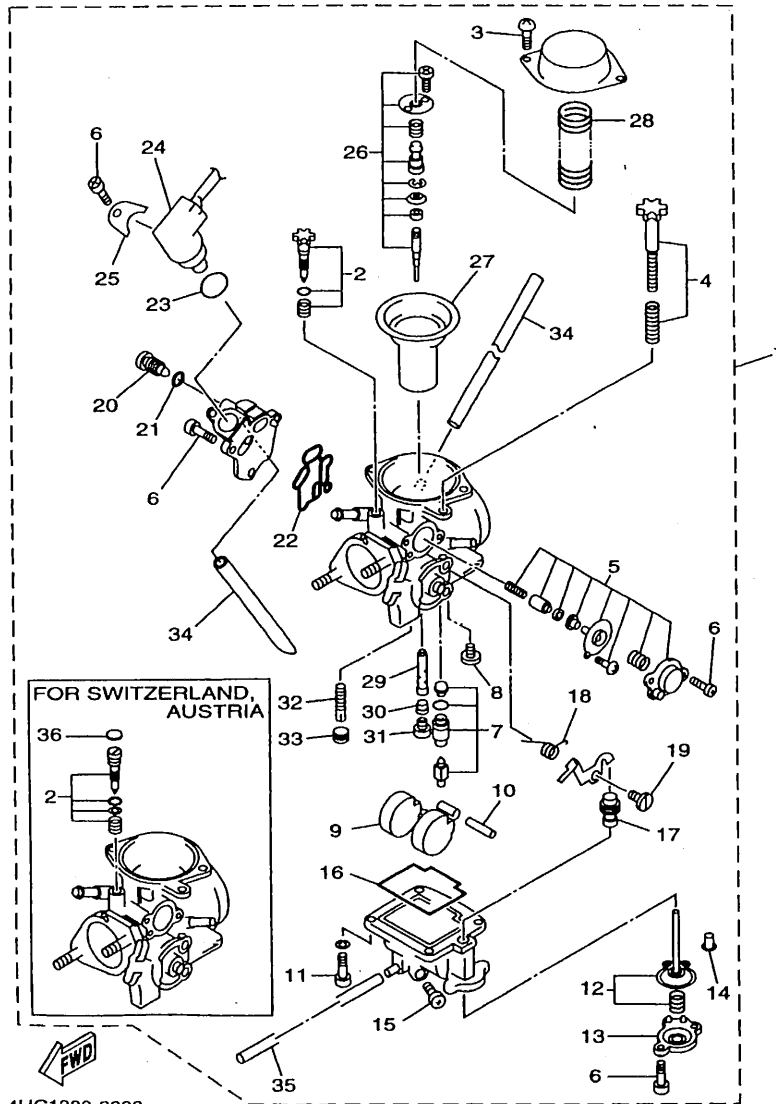


4UC1300-6090

B11

REF. NO.	PART NO.	DESCRIPTION	4UC2	4UD2	REMARKS
1	4UC-14301-01	CARBURETOR ASSY 1	1		
	4UD-14301-01	CARBURETOR ASSY 1		1	
2	4HC-14105-00	.PILOT SCREW SET	1		
	4UD-14105-00	.PILOT SCREW SET		1	
3	97801-05010	.SCREW, PAN HEAD	4	4	
4	4HC-14103-00	.THROTTLE SCREW SET	1	1	
5	4HC-1490A-00	.DIAPHRAGM SET, 1	1	1	
6	214-24535-00	.SCREW, LEVER FITTING	8	8	
7	4HC-14390-01	.NEEDLE VALVE ASSY	1	1	
8	98901-04006	.SCREW, BIND	1	1	
9	25N-14385-00	.FLOAT	1	1	
10	4KL-14386-00	.PIN, FLOAT	1	1	
11	98501-04012	.SCREW, PAN HEAD	4	4	
12	4HC-1490H-00	.DIAPHRAGM SET 5	1	1	
13	4GY-14958-00	.COVER, DIAPHRAGM	1	1	
14	4KL-14958-00	.CHECK VALVE ASSY	1	1	
15	4JP-14323-00	.SCREW, AIR ADJUSTING	1	1	
16	4KL-14384-00	.GASKET, FLOAT CHAMBER	1	1	
17	4KL-14404-00	.DUST CUP COMP.	1	1	
18	4HC-14555-00	.SPRING	1	1	
19	4HC-14429-00	.SCREW	1	1	
20	4HC-14592-00	.SCREW	1	1	
21	5H0-14397-00	.O-RING	1	1	
22	4KL-14536-00	.GASKET	1	1	
23	4KL-14397-00	.O-RING	1	1	
24	4HC-1410A-00	.STARTER SET	1	1	
25	4KL-14243-00	.PLATE	1	1	

FIG. 9 CARBURETOR

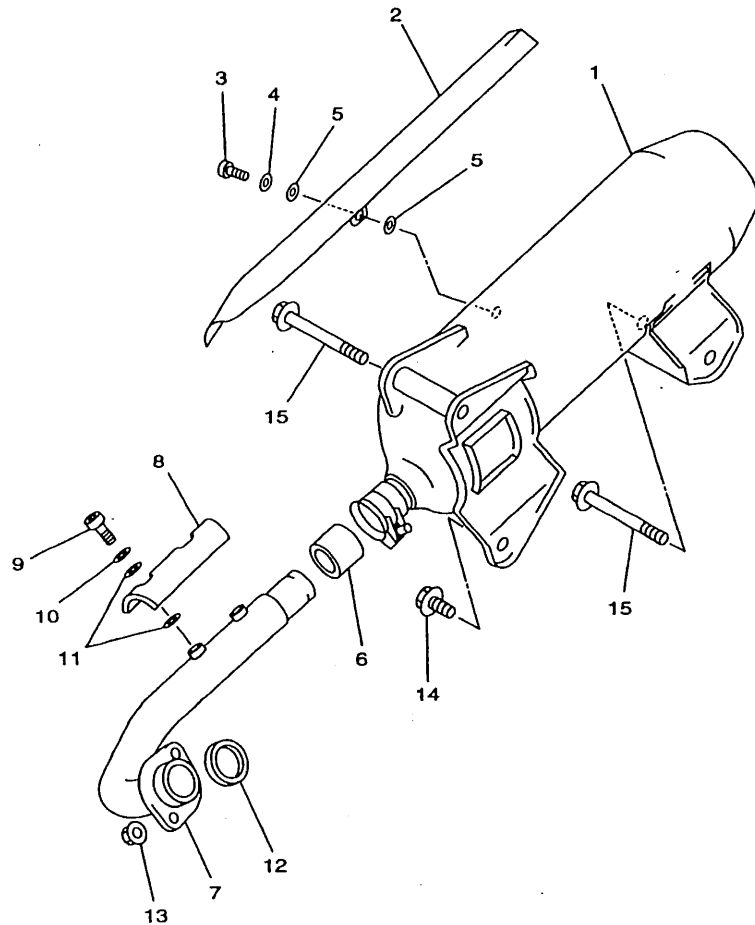


4UC1300-6090

REF. NO.	PART NO.	DESCRIPTION	4UC2	4UD2	REMARKS
26	4UC-1490J-00	.NEEDLE SET	1	1	
27	4HC-14340-00	.VALVE ASSY	1	1	
28	4HC-14286-00	.SPRING	1	1	
29	4UC-14341-00	.NOZZLE, MAIN	1	1	
30	4UC-14341-10	.NOZZLE, MAIN	1	1	
31	50M-14343-65	.JET, MAIN (#130)	1	1	
32	38V-14342-22	.JET, PILOT (# 44)	1	1	
33	50M-14355-00	.PLUG	1	1	
34	4HC-14197-00	.PIPE	2	2	
35	4HC-14196-00	.PIPE	1	1	
36	2WJ-14367-00	.PLUG		1	

B12

FIG. 10 EXHAUST

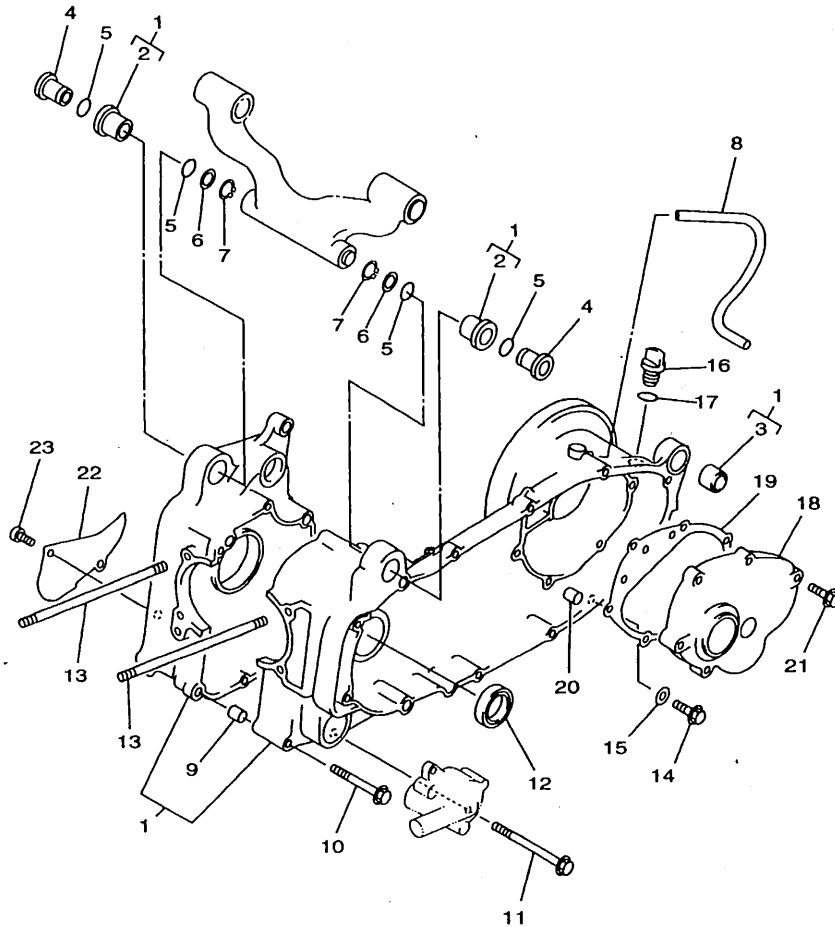


4HC1010-5100

REF. NO.	PART NO.	DESCRIPTION	4UC2	4UD2	REMARKS
1	4UC-14711-00	MUFFLER 1	1	1	
2	4HC-14708-00	PROTECTOR ASSY	1	1	
3	92017-06012	BOLT, BUTTON HEAD	3	3	
4	92907-06200	WASHER	3	3	
5	4BD-14766-00	WASHER, PROTECTOR	6	6	
6	4BH-14714-00	GASKET, MUFFLER	1	1	
7	4UC-14611-00	PIPE, EXHAUST 1	1	1	
8	4HC-14628-00	PROTECTOR, EXHAUST PIPE	1	1	
9	92017-06012	BOLT, BUTTON HEAD	2	2	
10	92907-06200	WASHER	2	2	
11	4BD-14766-00	WASHER, PROTECTOR	4	4	
12	3MT-14613-00	GASKET, EXHAUST PIPE	1	1	
13	95617-08200	NUT, SELF-LOCKING	2	2	
14	95817-10020	BOLT, FLANGE	1	1	
15	90105-10747	BOLT, WASHER BASED	2	2	

B13

FIG. 11 CRANKCASE



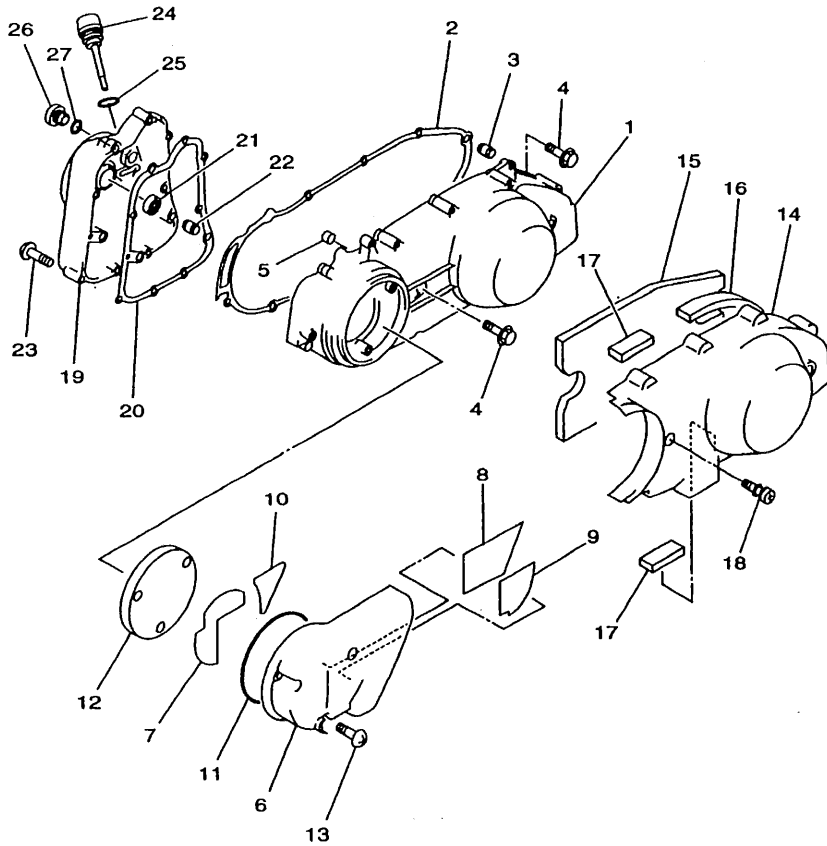
REF. NO.	PART NO.	DESCRIPTION			REMARKS
			4UC2	4UD2	
1	4HC-15100-00	CRANKCASE ASSY	1	1	
2	4HC-15378-00	.HOLDER	2	2	
3	164-22216-00	.BUSH, REAR SHOCK ABSORBER	1	1	
4	90387-1006J	COLLAR	2	2	
5	93210-16275	O-RING	4	4	
6	90201-16242	WASHER, PLATE	2	2	
7	99009-16400	CIRCLIP	2	2	
8	90445-135J8	HOSE	1	1	
9	99530-10114	PIN, DOWEL	2	2	
10	95027-06070	BOLT, FLANGE	4	4	
11	95027-06100	BOLT, FLANGE	5	5	
12	93102-30284	OIL SEAL	1	1	
13	90116-08591	BOLT, STUD	4	4	
14	95817-08016	BOLT, FLANGE	1	1	
15	90430-08119	GASKET	1	1	
16	2T4-15363-00	PLUG, OIL	1	1	
17	93210-14104	O-RING	1	1	
18	4HC-15421-00	COVER, CRANKCASE 2	1	1	
19	4HC-15461-00	GASKET, CRANKCASE COVER 2	1	1	
20	99530-10114	PIN, DOWEL	2	2	
21	95027-08040	BOLT, FLANGE	6	6	
22	4HC-15492-00	COVER	1	1	
23	91317-06014	BOLT	2	2	



4HC1010-5110

B14

FIG. 12 CRANKCASE COVER 1

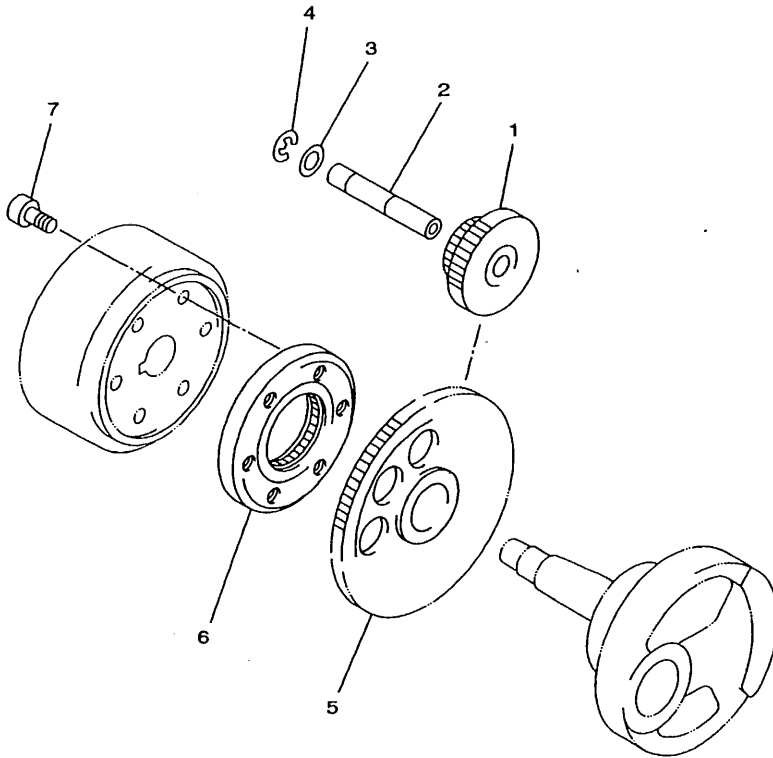


REF. NO.	PART NO.	DESCRIPTION			REMARKS
			4UC2	4UD2	
1	4HC-15411-00	COVER, CRANKCASE 1	1	1	
2	4HC-15451-00	GASKET, CRANKCASE COVER 1	1	1	
3	99530-10114	PIN, DOWEL	2	2	
4	95027-06040	BOLT, FLANGE	11	11	
5	90387-064T3	COLLAR	1	1	
6	4HC-15471-00	DUCT, AIR	1	1	
7	4HC-15337-00	DAMPER 4	1	1	
8	4HC-15338-00	DAMPER, ENGINE MOUNT 5	1	1	
9	4HC-15491-00	PROTECTOR	1	1	
10	4HC-15499-00	PROTECTOR, COVER	1	1	
11	4HC-15472-00	SEAL, AIR DUCT	1	1	
12	4HC-15407-00	ELEMENT 1	1	1	
13	98507-06020	SCREW, PAN HEAD	3	3	
14	4HC-15431-00	COVER, CRANKCASE 3	1	1	
15	4HC-15316-00	DAMPER, ENGINE MOUNT 1	1	1	
16	4HC-15326-00	DAMPER, ENGINE MOUNT 2	1	1	
17	4HC-15335-00	DAMPER 3	2	2	
18	3KJ-15481-00	BOLT 1	2	2	
19	4HC-15417-01	COVER, CAP	1	1	
20	4HC-15453-00	GASKET, CARBURETOR COVER	1	1	
21	93101-14092	OIL SEAL (S7-14-25-5.5-1-HS)	1	1	
22	99530-10114	PIN, DOWEL	2	2	
23	95027-06040	BOLT, FLANGE	10	10	
24	4HC-15363-00	PLUG, OIL	1	1	
25	93210-19123	O-RING	1	1	
26	36Y-15189-00	PLUG	1	1	
27	93210-16325	O-RING	1	1	

FWD
4UC1332-6120

B15

FIG. 13 STARTER



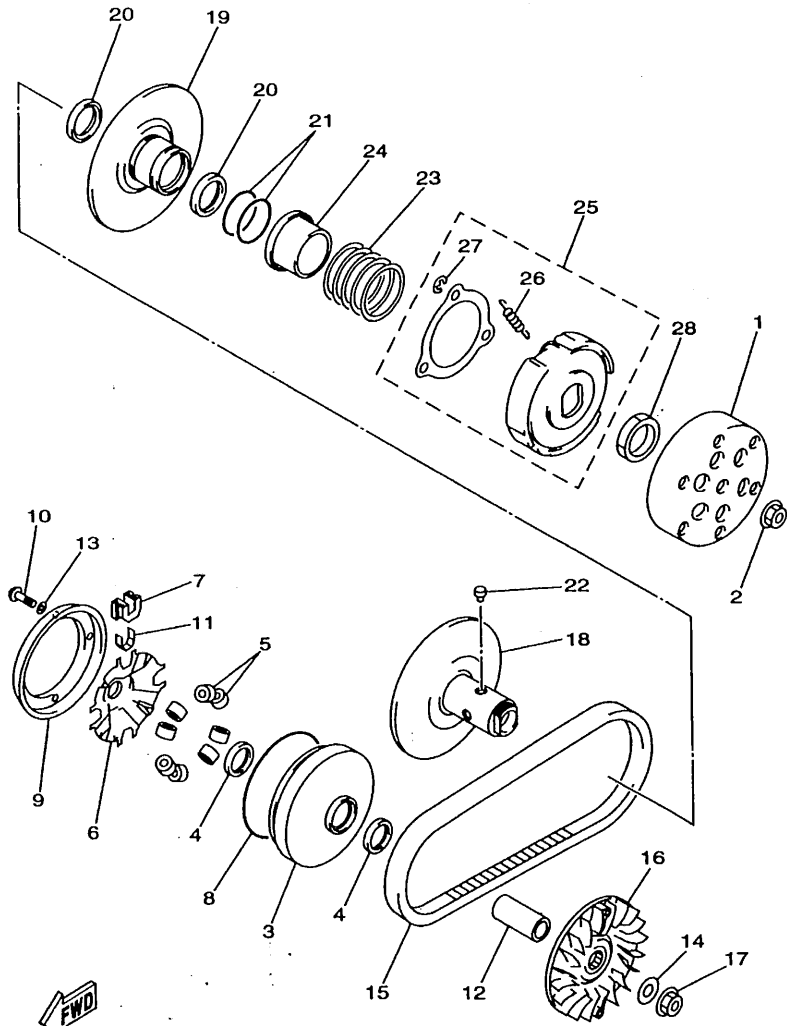
REF. NO.	PART NO.	DESCRIPTION	4UC2	4UD2	REMARKS
1	4HC-15512-00	GEAR, IDLER 1	1	1	
2	2HT-15521-00	SHAFT 1	1	1	
3	90201-12166	WASHER, PLATE	1	1	
4	99009-12400	CIRCLIP	1	1	
5	4HC-15517-00	GEAR, IDLER 2	1	1	
6	4HC-15590-00	STARTER ONE-WAY ASSY	1	1	
7	91317-08016	BOLT	3	3	



4HC1010-5130

C2

FIG. 14 CLUTCH

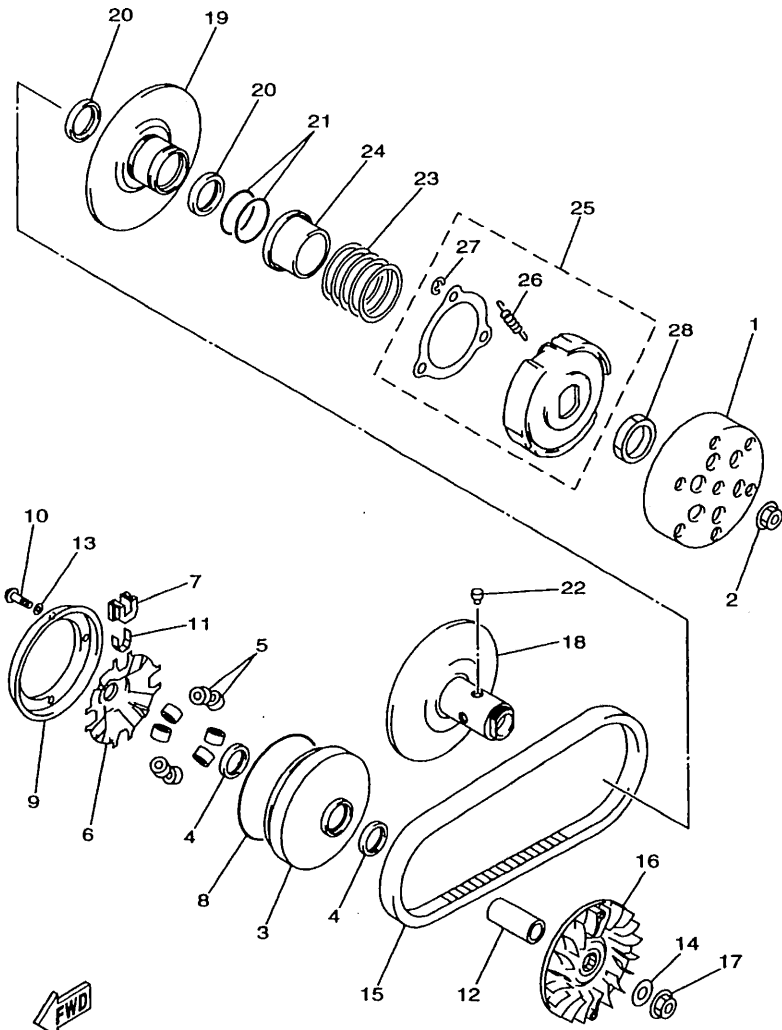


4UC1300-6140

REF. NO.	PART NO.	DESCRIPTION			REMARKS
			4UC2	4UD2	
1	1XX-16611-03	CLUTCH HOUSING COMP.	1	1	
2	90179-14469	NUT	1	1	
3	4UC-17620-00	PRIMARY SLIDING SHEAVE COMP.	1	1	
4	93101-28139	OIL SEAL	2	2	
5	4UC-17632-00	WEIGHT	8	8	
6	4HC-17623-00	CAM	1	1	
7	4HC-17653-00	SLIDER	4	4	
8	93211-17733	O-RING	1	1	
9	4HC-17639-00	STOPPER	1	1	
10	90157-04088	SCREW, PAN HEAD	4	4	
11	4HC-17654-00	SPACER 1	4	4	
12	90387-1906E	COLLAR	1	1	
13	90201-047R9	WASHER, PLATE	4	4	
14	90201-144M8	WASHER, PLATE	1	1	
15	4HC-17641-00	V-BELT	1	1	
16	4HC-17611-00	SHEAVE, PRIMARY FIXED	1	1	
17	90179-14469	NUT	1	1	
18	4HC-17660-00	SECONDARY FIXED SHEAVE COMP.	1	1	
19	4HC-17670-00	SECONDARY SLIDING SHEAVE	1	1	
20	93104-41115	OIL SEAL	2	2	
21	93210-43713	O-RING	2	2	
22	4CW-17664-00	PIN, GUIDE	4	4	
23	90501-505J6	SPRING, COMPRESSION	1	1	
24	4HC-17684-00	SEAT, SECONDARY SPRING	1	1	
25	4HC-16620-00	CLUTCH CARRIER ASSY	1	1	
26	2YM-16626-00	.SPRING, CLUTCH WEIGHT 1	3	3	
27	99001-08600	.CIRCLIP	3	3	

C3

FIG. 14 CLUTCH

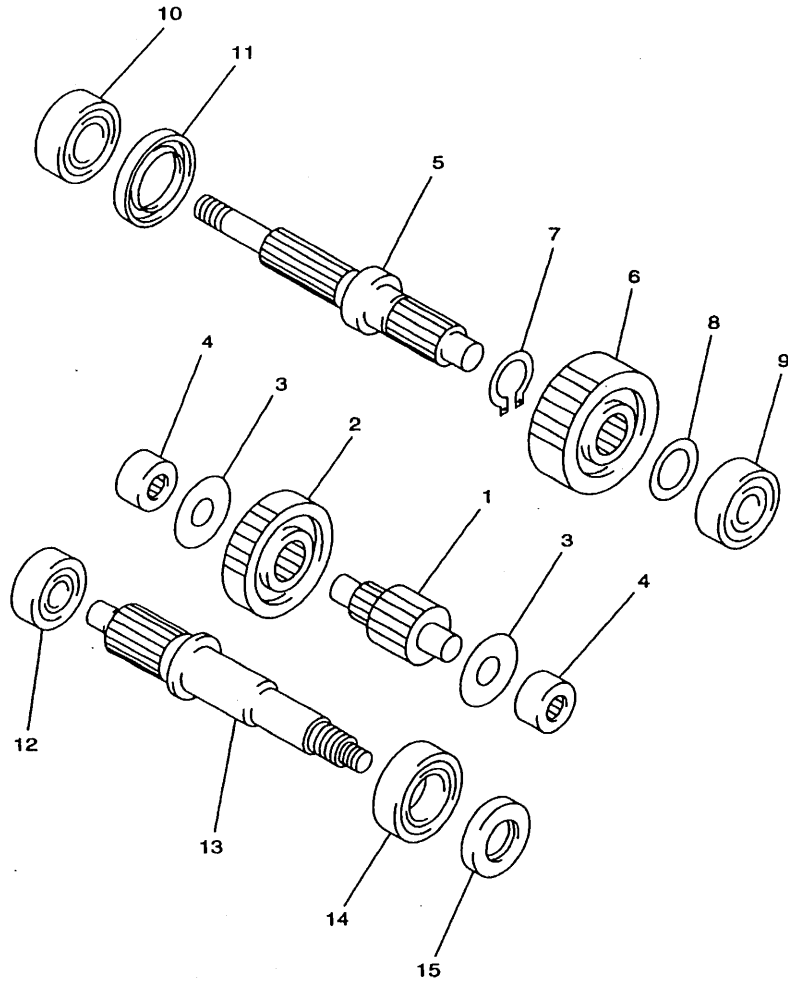


REF. NO.	PART NO.	DESCRIPTION	4UC2	4UD2	REMARKS
28	90170-36279	NUT	1	1	

 4UC1300-6140

C4

FIG. 15 TRANSMISSION

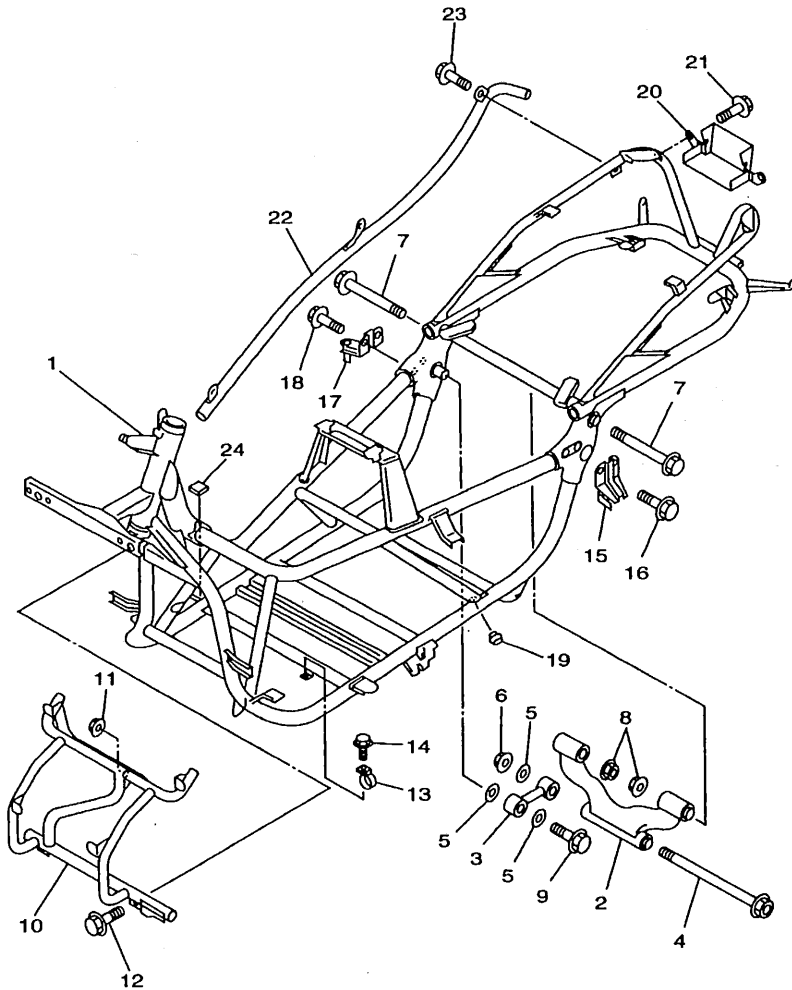


REF. NO.	PART NO.	DESCRIPTION	4UC2	4UD2	REMARKS
1	4HC-17411-01	AXLE, MAIN	1	1	
2	4HC-16151-01	GEAR, PRIMARY DRIVEN	1	1	
3	90201-156R4	WASHER, PLATE	2	2	
4	93311-41566	BEARING	2	2	
5	4HC-17421-01	AXLE, DRIVE	1	1	
6	4HC-17211-01	GEAR, 1ST WHEEL	1	1	
7	89009-25400	CIRCLIP	1	1	
8	90201-232K5	WASHER, PLATE	1	1	
9	93306-30302	BEARING (B6303C3)	1	1	
10	93306-27205	BEARING	1	1	
11	93102-32298	OIL SEAL	1	1	
12	93306-30201	BEARING (B6302)	1	1	
13	4HC-16111-00	GEAR, PRIMARY DRIVE	1	1	
14	93306-20532	BEARING	1	1	
15	93102-25299	OIL SEAL	1	1	


4HC1010-5150

C5

FIG. 16 FRAME



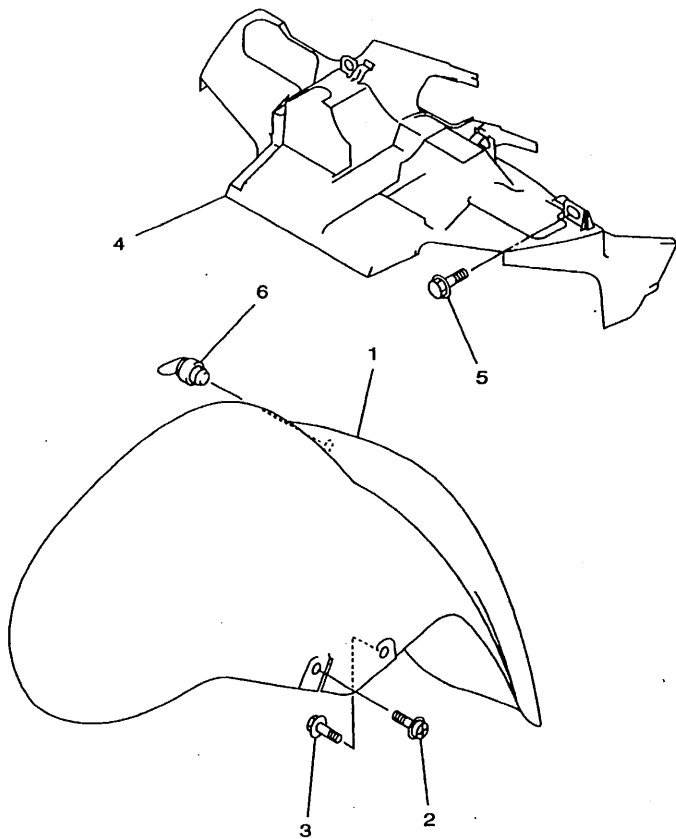
REF. NO.	PART NO.	DESCRIPTION	4UC2	4UD2	REMARKS
1	4HC-21110-01	FRAME COMP.	1	1	
2	4HC-21420-00	ENGINE BRACKET COMP. 2	1	1	
3	4HC-21480-00	STAY, ENGINE	1	1	
4	90105-10716	BOLT, WASHER BASED	1	1	
5	90201-105A2	WASHER, PLATE	3	3	
6	90185-10154	NUT, SELF-LOCKING	1	1	
7	95817-12120	BOLT, FLANGE	2	2	
8	90185-12072	NUT, SELF-LOCKING	2	2	
9	95817-10045	BOLT, FLANGE	1	1	
10	4HC-28356-01	STAY 1	1	1	
11	95707-08500	NUT, FLANGE	1	1	
12	95807-08016	BOLT, FLANGE	2	2	
13	4GY-23389-00	GUIDE, CABLE	2	2	
14	90105-05361	BOLT, WASHER BASED	2	2	
15	4HC-27452-01	BRACKET, FOOTREST 1	1	1	
16	95807-06012	BOLT, FLANGE	2	2	
17	4HC-27462-01	BRACKET, FOOTREST 2	1	1	
18	95807-06012	BOLT, FLANGE	2	2	
19	4HC-27314-00	STOPPER	1	1	
20	4HC-2476V-00	PROTECTOR,2	1	1	
21	95807-06010	BOLT, FLANGE	2	2	
22	4HC-2117G-00	PROTECTOR	1	1	
23	95807-06010	BOLT, FLANGE	3	3	
24	3TB-28217-00	DAMPER 1	1	1	



4UC2300-7160

C6

FIG. 17 FENDER



REF. NO.	PART NO.	DESCRIPTION	4UC2	4UD2	REMARKS
1	4HC-21511-00-P1	FENDER, FRONT	1	1	DPBMC
	4HC-21511-00-3H	FENDER, FRONT	1	1	NSD
	4HC-21511-00-P0	FENDER, FRONT	1	1	DRC2
	4HC-21511-00-4B	FENDER, FRONT	1	1	BL2
2	90154-06014	SCREW, BINDING	2	2	
3	90109-060F3	BOLT	2	2	
4	4HC-21552-00	FENDER, INNER	1	1	
5	90109-063F1	BOLT	3	3	
6	1A8-21518-00	HOLDER, CABLE	1	1	



4HC1010-5170

C7

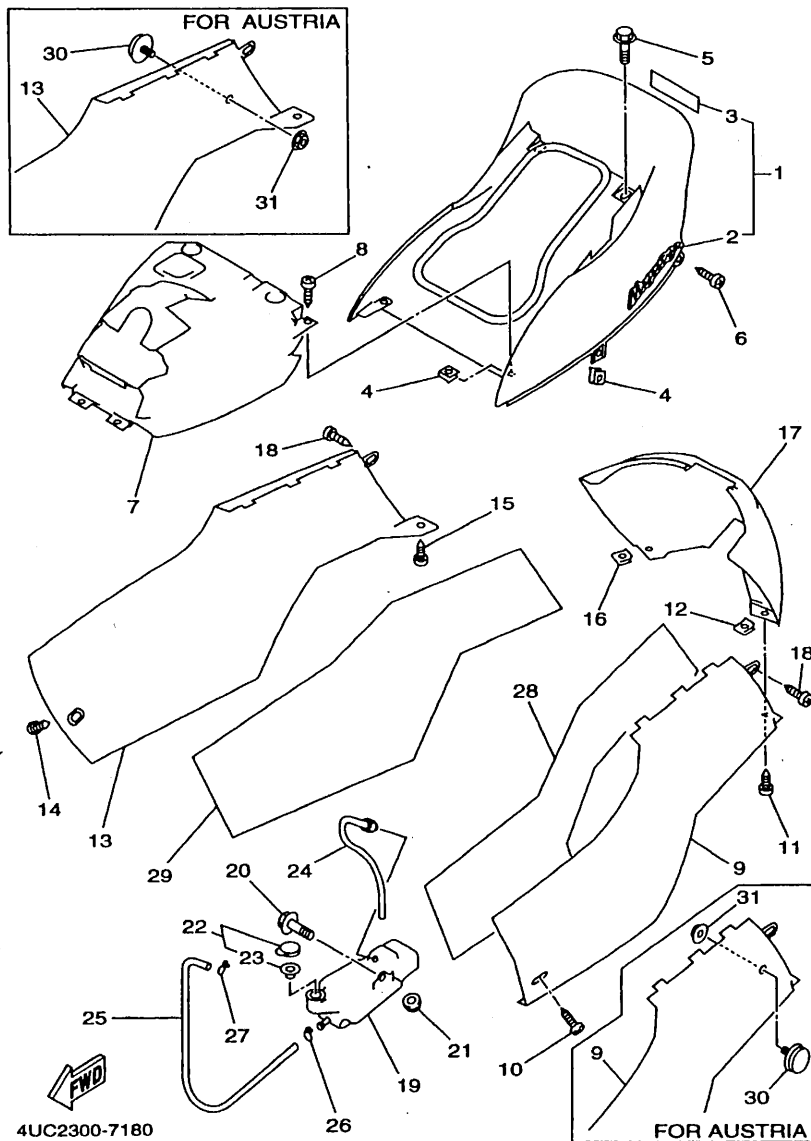


FIG. 18 SIDE COVER

REF. NO.	PART NO.	DESCRIPTION			REMARKS
			4UC2	4UD2	
1	4HC-Y2171-30-P1	COVER, SIDE 1	1	1	DPBMC
	4HC-Y2171-20-3H	COVER, SIDE 1	1	1	NSD
	4HC-Y2171-30-P0	COVER, SIDE 1	1	1	DRC2
	4HC-Y2171-30-4B	COVER, SIDE 1	1	1	BL2
2	4HC-21781-10	.EMBLEM 1	2	2	
3	99236-00080	.EMBLEM, YAMAHA	1	1	UR FOR DPBMC,
	99237-00080	.EMBLEM, YAMAHA	1	1	DRC2,BL2 UR FOR NSD
4	90183-05042	NUT, SPRING	4	4	
5	90119-06018	BOLT, WITH WASHER	2	2	
6	90167-05025	SCREW, TAPPING	2	2	
7	4HC-21721-00	COVER, SIDE 2	1	1	
8	90167-05025	SCREW, TAPPING	2	2	
9	4HC-2171L-11	MOLE, SIDE COVER 1	1	1	
	4UD-2171L-10	MOLE, SIDE COVER 1	1	1	FOR AUT
10	90167-05025	SCREW, TAPPING	1	1	
11	90167-05025	SCREW, TAPPING	1	1	
12	90183-05042	NUT, SPRING	1	1	
13	4HC-2171M-11	MOLE, SIDE COVER 2	1	1	
	4UD-2171M-10	MOLE, SIDE COVER 2	1	1	FOR AUT
14	90167-05025	SCREW, TAPPING	1	1	
15	90167-05025	SCREW, TAPPING	1	1	
16	90183-05042	NUT, SPRING	1	1	
17	4HC-2171N-10	MOLE, SIDE COVER 3	1	1	
18	90167-05025	SCREW, TAPPING	2	2	
19	4HC-21871-00	TANK, RECOVERY	1	1	
20	90119-06044	BOLT, WITH WASHER	1	1	
21	90480-01288	GROMMET	1	1	

C8

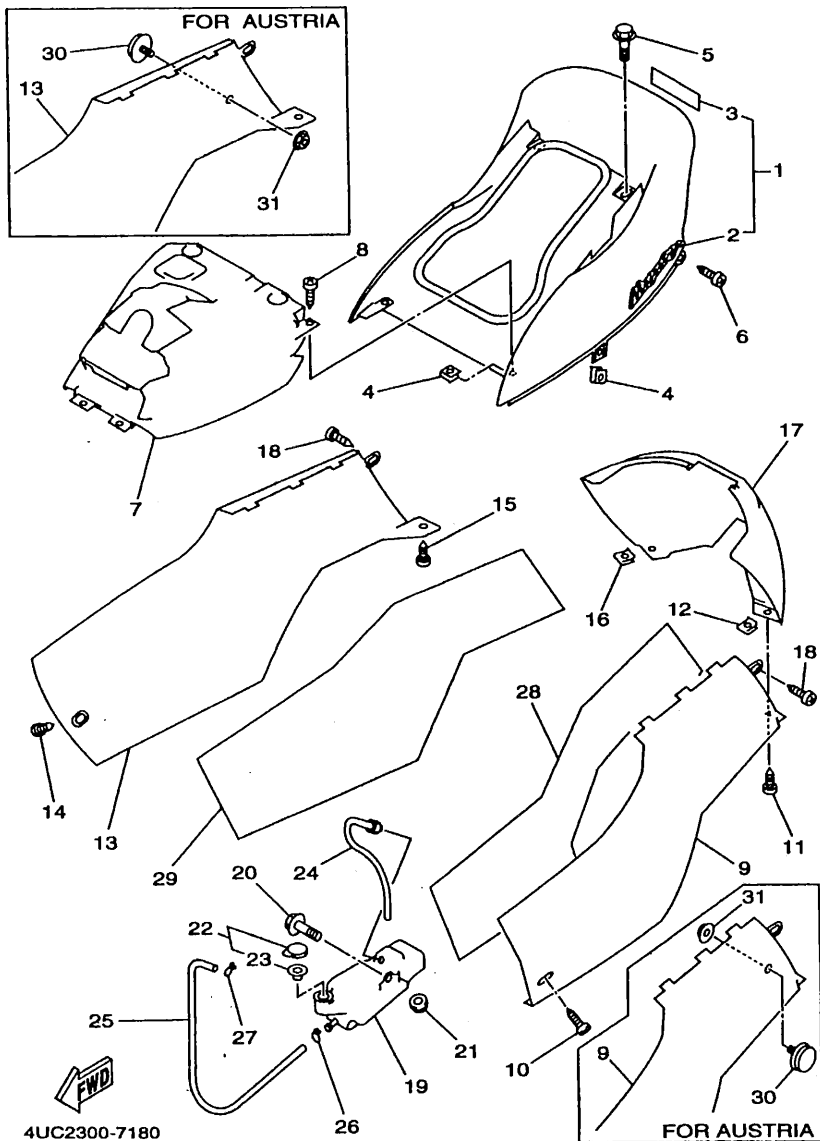
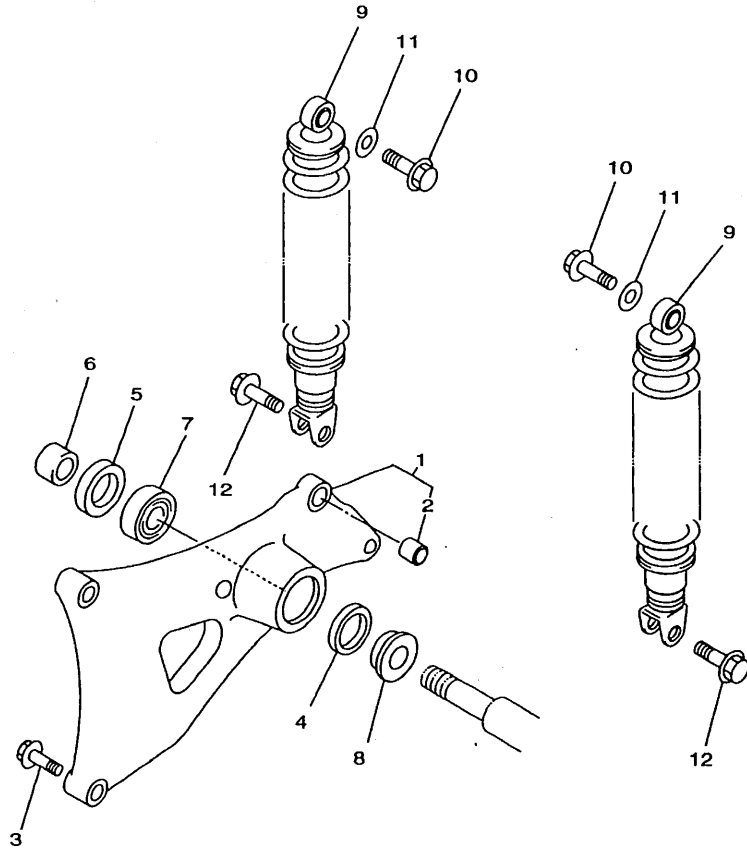


FIG. 18 SIDE COVER

REF. NO.	PART NO.	DESCRIPTION	4UC2	4UD2	REMARKS
22	1AA-21815-00	CAP	1	1	
23	1AA-21874-00	.GASKET	1	1	
24	4HC-21816-00	PIPE 1	1	1	
25	4HC-21817-00	PIPE 2	1	1	
26	90467-08003	CLIP	1	1	
27	90467-10008	CLIP	1	1	
28	4HC-21778-01	DAMPER, LOCATING 1	1	1	
29	4HC-21779-01	DAMPER, LOCATING 2	1	1	
30	4AG-85111-00	REFLECTOR, FRONT 1		2	FOR AUT
31	95707-06500	NUT, FLANGE		2	FOR AUT

C9

FIG. 19 REAR ARM. SUSPENSION

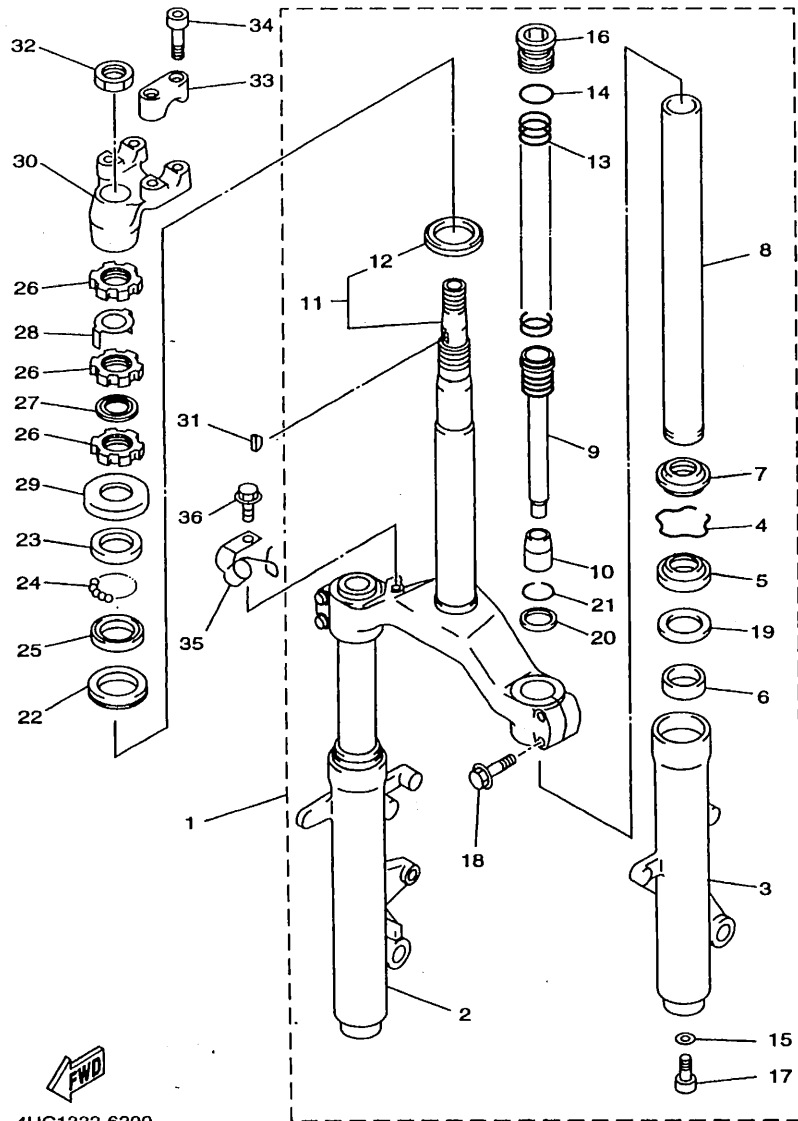


REF. NO.	PART NO.	DESCRIPTION	4UC2	4UD2	REMARKS
1	4HC-22100-00	REAR ARM ASSY	1	1	
2	164-22216-00	.BUSH, REAR SHOCK ABSORBER	1	1	
3	95827-08045	BOLT, FLANGE	2	2	
4	93109-28043	OIL SEAL	1	1	
5	93106-26005	OIL SEAL	1	1	
6	90387-15423	COLLAR	1	1	
7	93306-30201	BEARING (B6302)	1	1	
8	90387-153N8	COLLAR	1	1	
9	4HC-22210-11	SHOCK ABSORBER ASSY, REAR	2	2	
10	95827-10035	BOLT, FLANGE	2	2	
11	90201-105A2	WASHER, PLATE	2	2	
12	95827-08030	BOLT, FLANGE	2	2	



4HC1010-5190

C10



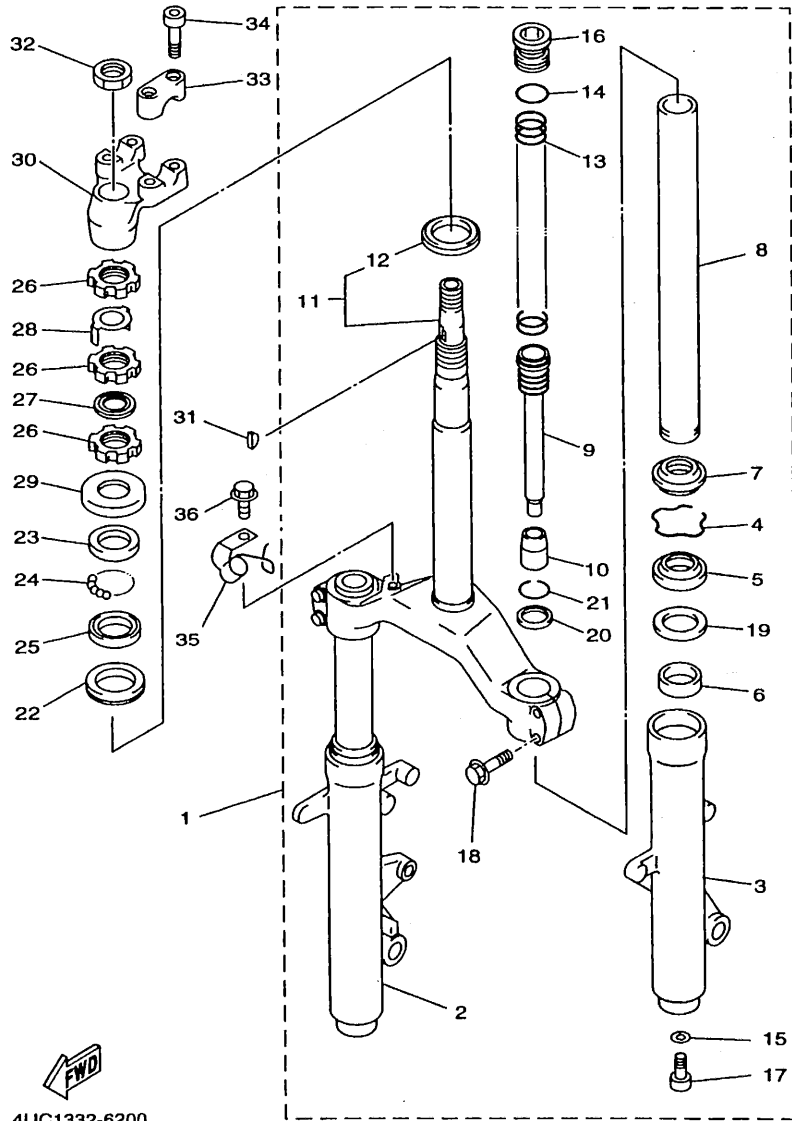
4UC1332-6200

FIG. 20 STEERING

REF. NO.	PART NO.	DESCRIPTION	4UC2	4UD2	REMARKS
1	4HC-23100-11	FRONT FORK ASSY	1	1	
2	4HC-23136-10	.TUBE, OUTER (RIGHT)	1	1	
3	4HC-23126-10	.TUBE, OUTER (LEFT)	1	1	
4	22W-23153-L0	.RING, SNAP	2	2	
5	4HC-23145-10	.OIL SEAL	2	2	
6	4HC-23125-10	.METAL, SLIDE 1	2	2	
7	4HC-23144-10	.SEAL, DUST	2	2	
8	4HC-23110-10	.INNER TUBE COMP.1	2	2	
9	4HC-23170-10	.CYLINDER COMP., FRONT FORK	2	2	
10	4HC-23173-10	.SPINDLE, TAPER	2	2	
11	4HC-23340-10	.UNDER BRACKET COMP.	1	1	
12	164-23462-00	.SEAL, STEERING	1	1	
13	4HC-23141-10	.SPRING, FRONT FORK	2	2	
14	3J2-23114-00	.O-RING	2	2	
15	509-23158-L0	.GASKET	2	2	
16	4HC-23111-00	.BOLT, CAP	2	2	
17	278-23181-50	.BOLT, HEXAGON SOCKET HEAD	2	2	
18	95027-08040	.BOLT, FLANGÉ	4	4	
19	22W-23146-L0	.WASHER, OIL SEAL	2	2	
20	4HC-23184-10	.CAP, AIR VALVE	2	2	
21	3G2-23183-00	.RING, SNAP	2	2	
22	93399-99942	BEARING	1	1	
23	22F-23411-01	RACE, BALL 1	1	1	
24	93503-16003	BALL	22	22	
25	22F-23412-01	RACE, BALL 2	1	1	
26	90179-25615	NUT	3	3	
27	90202-26142	WASHER, PLATE	1	1	

C11

FIG. 20 STEERING

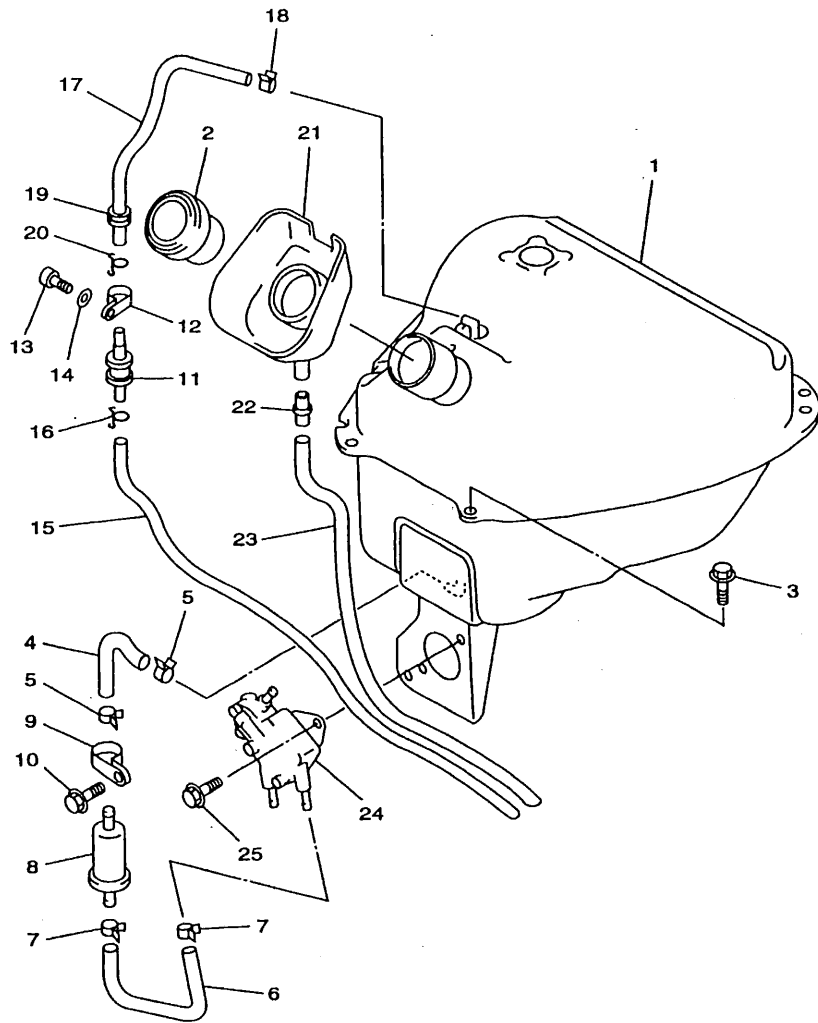


REF. NO.	PART NO.	DESCRIPTION			REMARKS
			4UC2	4UD2	
28	3YF-23418-00	WASHER, SPECIAL	1	1	
29	3VP-23416-00	COVER, BALL RACE 2	1	1	
30	4HC-23442-10	HOLDER, HANDLE LOWER	1	1	
31	90280-03017	KEY, WOODRUFF	1	1	
32	90170-20386	NUT	1	1	
33	4H7-23441-00-98	HOLDER, HANDLE UPPER	2	2	LGB
34	91317-08030	BOLT	4	4	
35	4HC-25875-00	HOLDER, BRAKE HOSE 1	1	1	
36	95807-06012	BOLT, FLANGE	1	1	



4UC1332-6200

C12



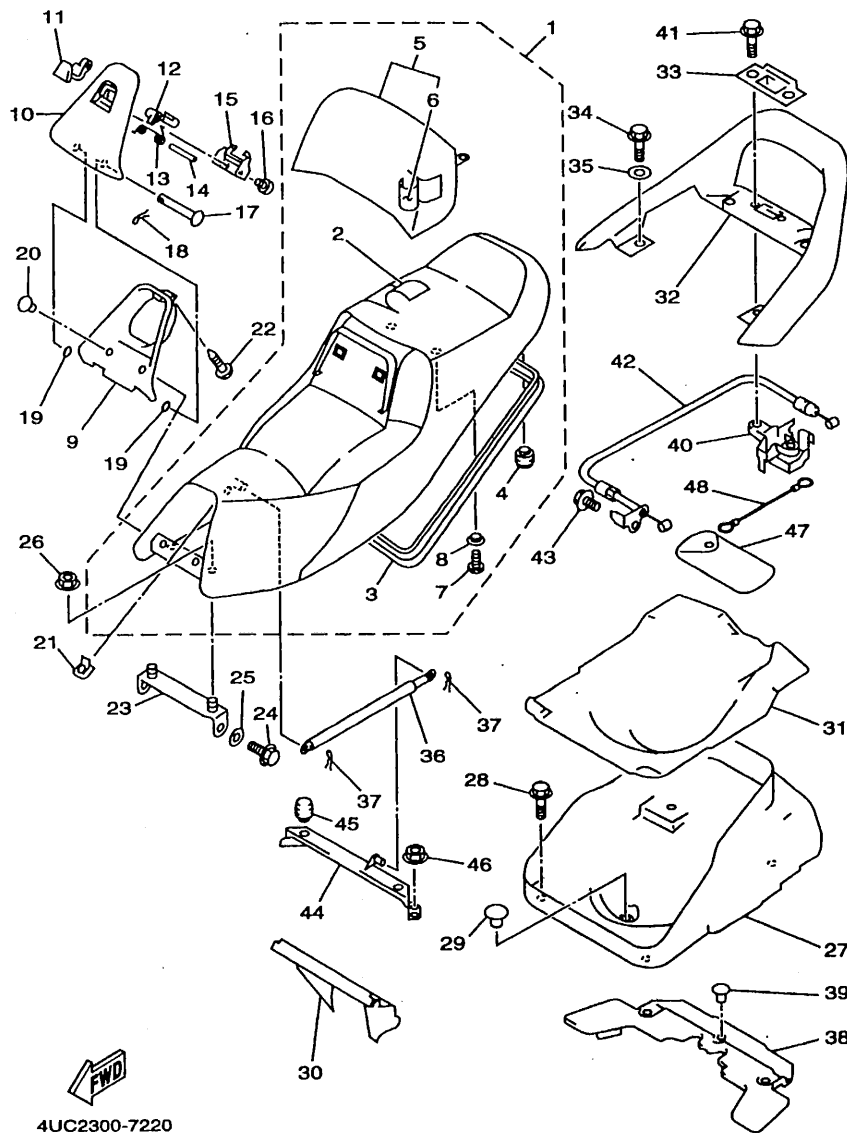
4HC1010-5210

FIG. 21 FUEL TANK

REF. NO.	PART NO.	DESCRIPTION			REMARKS
			4UC2	4UD2	
1	4HC-24110-00	FUEL TANK COMP.	1	1	
2	54K-24602-00	CAP ASSY	1	1	
3	95827-06012	BOLT, FLANGE	2	2	
4	4HC-24311-00	PIPE, FUEL 1	1	1	
5	90467-12053	CLIP	2	2	
6	4HC-24312-00	PIPE 2	1	1	
7	90467-12053	CLIP	2	2	
8	1FK-24560-00	FILTER ASSY	1	1	
9	1AE-24366-00	CLAMP, FUEL PIPE 1	1	1	
10	95027-06012	BOLT, FLANGE	1	1	
11	25H-24180-00	ROLL OVER VALVE ASSY	1	1	
12	80461-15100	CLAMP	1	1	
13	98507-05012	SCREW, PAN HEAD	1	1	
14	82907-05600	WASHER, PLATE	1	1	
15	90445-092E8	HOSE	1	1	
16	90467-09006	CLIP	1	1	
17	4HC-24313-00	PIPE 3	1	1	
18	90468-02078	CLIP	1	1	
19	90480-13018	GROMMET	1	1	
20	90467-09006	CLIP	1	1	
21	4HC-2414A-00	COVER, FILLER	1	1	
22	4JP-21753-00	BOSS, CONNECTOR	1	1	
23	4HC-24318-00	PIPE, OVERFLOW	1	1	
24	4HC-13910-00	FUEL PUMP ASSY	1	1	
25	95027-06012	BOLT, FLANGE	2	2	

C13

FIG. 22 SEAT

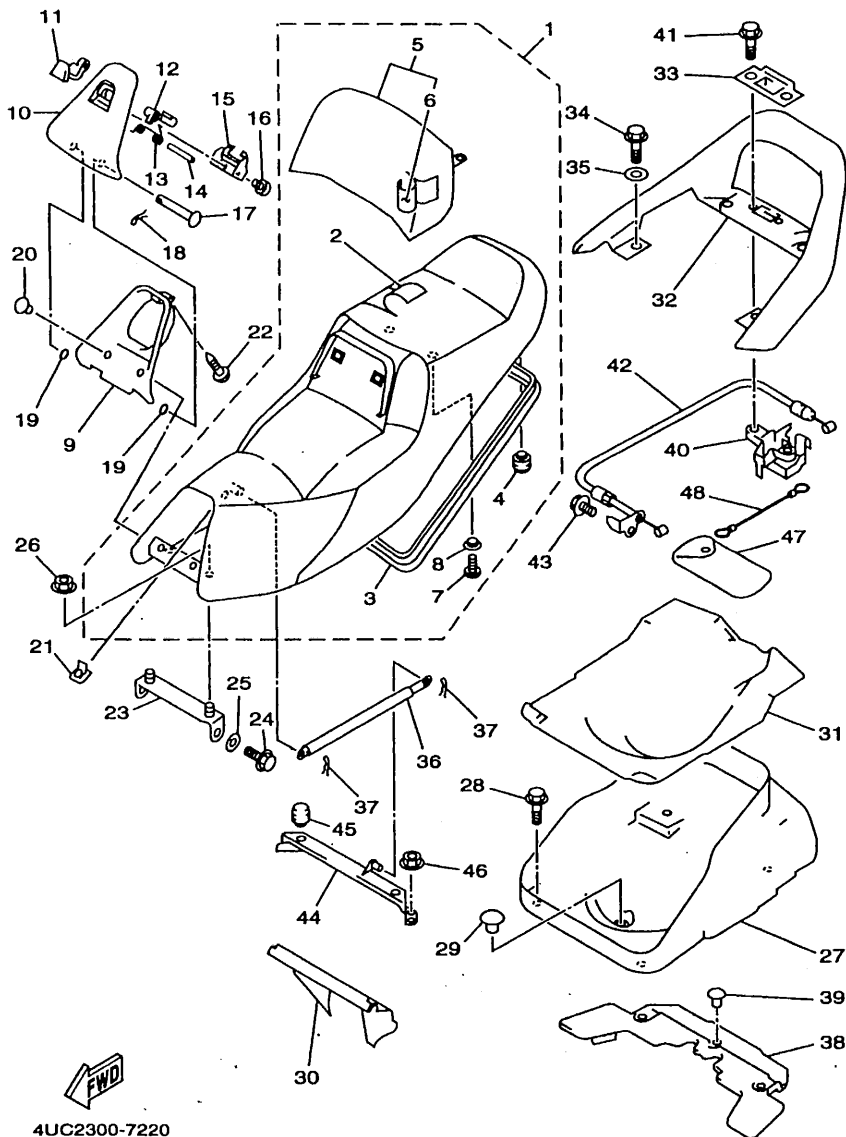


REF. NO.	PART NO.	DESCRIPTION			REMARKS
			4UC2	4UD2	
1	4HC-24730-A0	DOUBLE SEAT ASSY	1	1	
2	4HC-2470F-A0	.COVER, SEAT	1	1	
3	4HC-2475M-00	.SEAL	1	1	
4	1T4-24741-00	.PAD, SEAT	2	2	
5	4HC-24790-A0	.SEAT BACK ASSY	1	1	
6	4HC-2477A-A0	..SEAT COVER ASSY	1	1	
7	90110-06200	.BOLT, HEXAGON SOCKET HEAD	2	2	
8	90387-066R8	.COLLAR	2	2	
9	4HC-2473F-10	COVER, SEAT COMP.	1	1	
10	4HC-2473T-10	LID 1	1	1	
11	4HC-2477F-00	LEVER, SEAT	1	1	
12	4HC-24754-00	HOOK, SEAT	1	1	
13	4HC-24758-00	SPRING	1	1	
14	93603-50195	PIN, DOWEL	1	1	
15	4HC-24217-00	COVER	1	1	
16	97707-04108	SCREW, TAPPING	2	2	
17	90240-05047	PIN, CLEVIS	1	1	
18	90468-12007	CLIP	1	1	
19	93210-05187	O-RING	2	2	
20	90269-07076	RIVET	2	2	
21	90183-05042	NUT, SPRING	1	1	
22	90167-05025	SCREW, TAPPING	1	1	
23	4HC-2197J-00	HINGE 1	1	1	
24	90109-063F5	BOLT	2	2	
25	90206-10036	WASHER, WAVE	2	2	
26	95707-08500	NUT, FLANGE	2	2	
27	4HC-2473R-01	BOX 1	1	1	

4UC2300-7220

C14

FIG. 22 SEAT

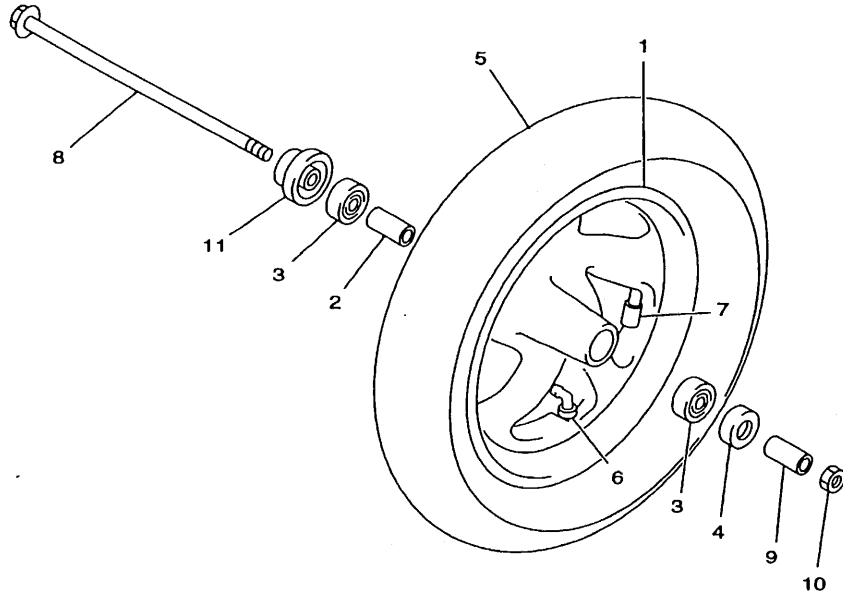


4UC2300-7220

REF. NO.	PART NO.	DESCRIPTION	4UC2	4UD2	REMARKS
28	90119-06191	BOLT, WITH WASHER	4	4	
29	90338-11125	PLUG	1	1	
30	4HC-2177F-00	COVER	1	1	
31	4HC-24723-00	DAMPER, SEAT	1	1	
32	4HC-24773-00-P1	HANDLE, SEAT	1	1	DPBMC
	4HC-24773-00-3H	HANDLE, SEAT	1	1	NSD
	4HC-24773-00-P0	HANDLE, SEAT	1	1	DRC2
	4HC-24773-00-4B	HANDLE, SEAT	1	1	BL2
33	4HC-2476U-00	PROTECTOR,1	1	1	
34	95817-06020	BOLT, FLANGE	4	4	
35	90201-064J1	WASHER, PLATE	4	4	
36	4HC-2478G-00	STOPPER	1	1	
37	90468-18121	CLIP	2	2	
38	4HC-21629-00	GUARD, MUD	1	1	
39	90269-07076	RIVET	3	3	
40	4JP-24780-02	SEAT LOCK ASSY	1	1	
41	95807-06020	BOLT, FLANGE	2	2	
42	4HC-2478E-00	CABLE, SEAT LOCK	1	1	
43	98507-05010	SCREW, PAN HEAD	1	1	
44	4HC-24738-00	BRACKET, SEAT	1	1	
45	1T4-24741-00	PAD, SEAT	2	2	
46	95707-06500	NUT, FLANGE	4	4	
47	4HC-28100-00	TOOL KIT	1	1	
48	4HC-21398-00	HANGER, HELMET	1	1	

C15

FIG. 23 FRONT WHEEL



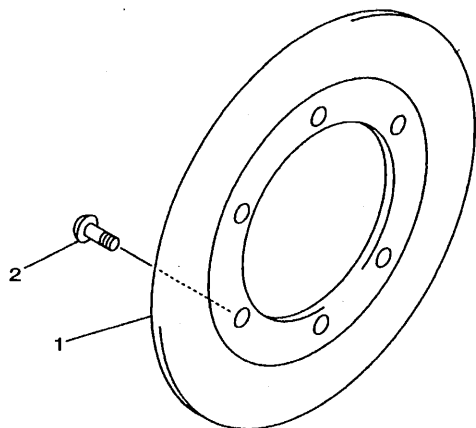
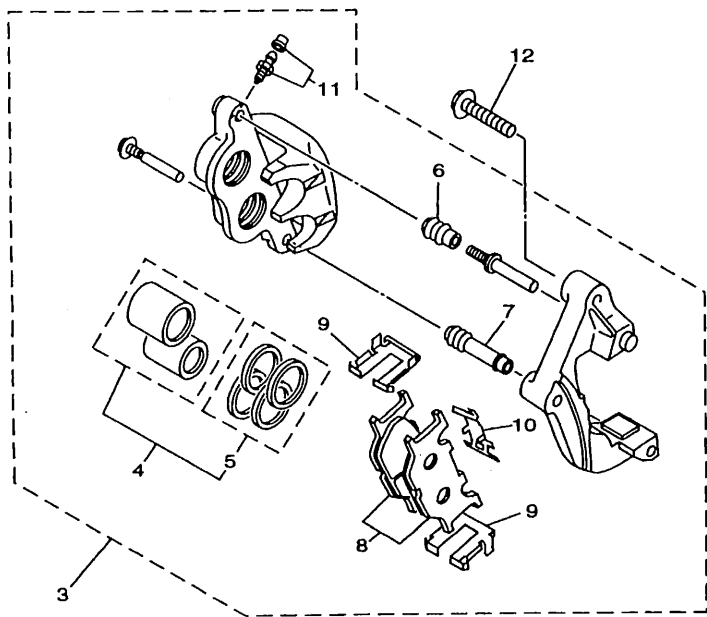
REF. NO.	PART NO.	DESCRIPTION			REMARKS
			4UC2	4UD2	
1	4HC-25168-00-WN	CAST WHEEL, FRONT	1	1	CIS
2	90387-1508E	COLLAR	1	1	
3	93306-30202	BEARING	2	2	
4	93102-22014	OIL SEAL	1	1	
5	94111-1205A	TIRE (110/90-12 64J MB61)	1	1	INOUE
6	93900-00022	VALVE, RIM	1	1	TAIHEIYO
7	29L-25398-00	BALANCER, WHEEL (10G)	1	1	UN
	29L-25398-10	BALANCER, WHEEL (20G)	1	1	UN
	29L-25398-20	BALANCER, WHEEL (30G)	1	1	UN
8	2UJ-25381-00	AXLE, WHEEL	1	1	
9	90387-151R0	COLLAR	1	1	
10	90185-14166	NUT, SELF-LOCKING	1	1	
11	4HC-25190-00	GEAR UNIT ASSY	1	1	



4HC1010-5230

D2

FIG. 24 FRONT BRAKE CALIPER



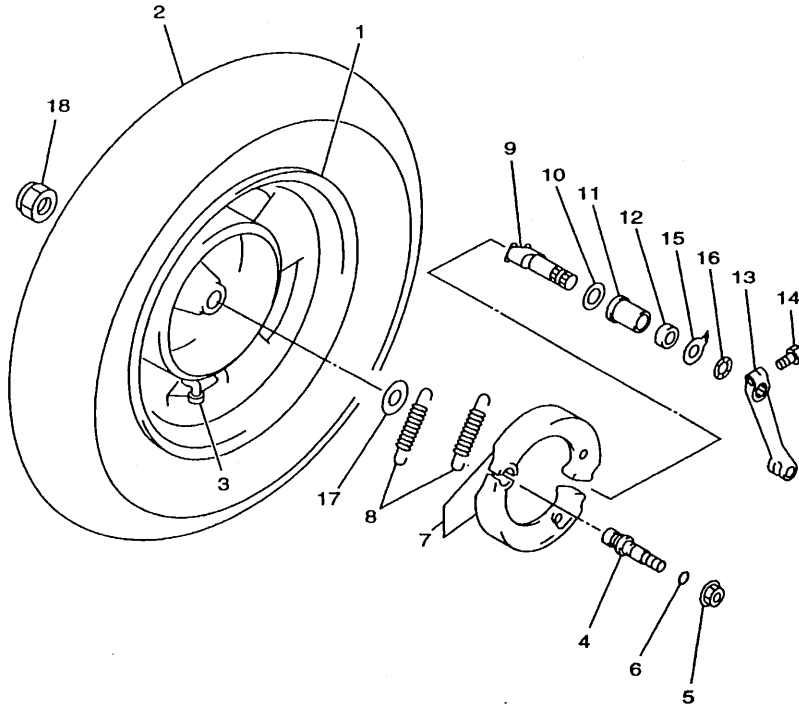
REF. NO.	PART NO.	DESCRIPTION			REMARKS
			4UC2	4UD2	
1	4HC-2582T-00	DISC, BRAKE	1	1	
2	90109-083G4	BOLT	6	6	
3	4HM-2580U-00	CALIPER ASSY (RIGHT)	1	1	
4	4FU-W0057-50	.PISTON ASSY, CALIPER	1	1	
5	4FU-W0047-50	..CALIPER SEAL KIT	1	1	
6	5R2-25937-00	.BOOT 2	1	1	
7	3YX-25937-00	.BOOT 2	1	1	
8	4HM-W0045-00	.BRAKE PAD KIT	1	1	
9	4BP-25919-00	.SUPPORT, PAD	2	2	
10	3YX-25929-00	.SPRING, ANTI RATTLE	1	1	
11	51L-W0048-00	.BLEED SCREW KIT	1	1	
12	90105-10638	BOLT, WASHER BASED	2	2	



4UC1332-6240

D3

FIG. 25 REAR WHEEL



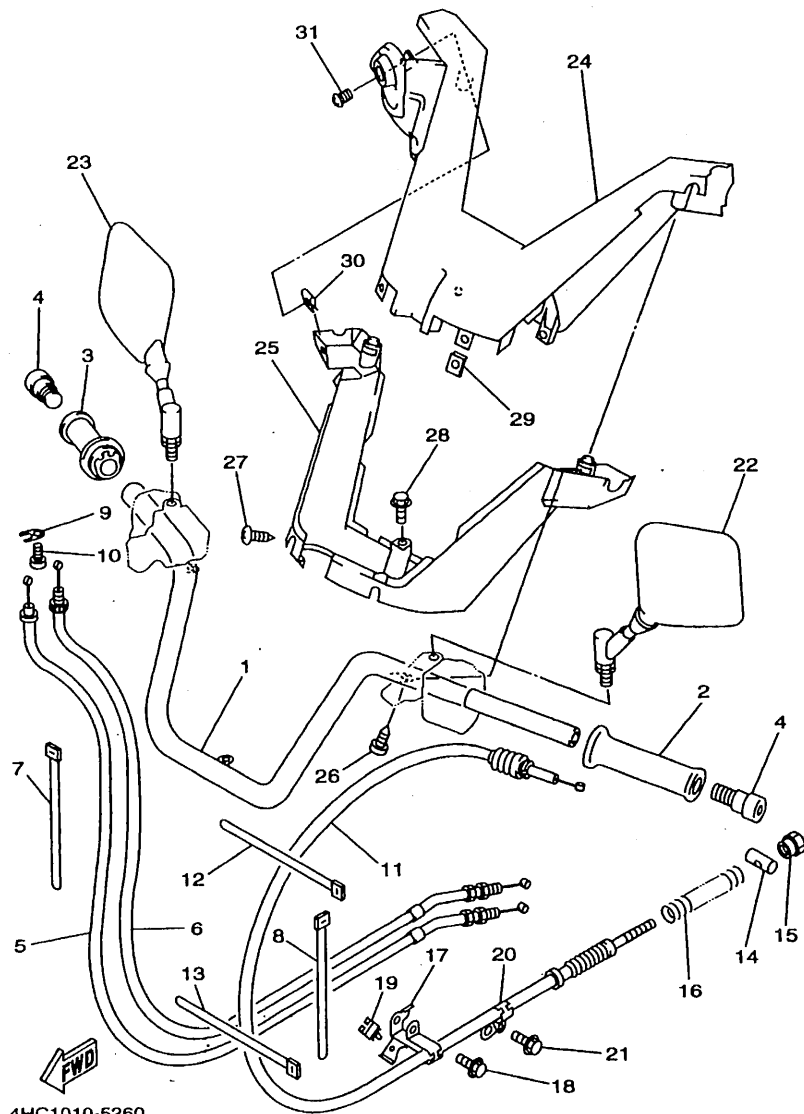
REF. NO.	PART NO.	DESCRIPTION	4UC2	4UD2			REMARKS
1	4HC-25338-00-WN	CAST WHEEL, REAR	1	1			CIS
2	94113-1207P	TIRE (130/70-12 62L MB61)	1	1			INOUE
3	93900-00025	VALVE, RIM	1	1			
4	4HC-25326-00	PIN, PIVOT	1	1			
5	95707-10500	NUT, FLANGE	1	1			
6	93210-09729	O-RING	1	1			
7	4HC-W2536-00	BRAKE SHOE SET	1	1			
8	90507-20002	SPRING, TENSION	2	2			
9	4HC-25351-00	CAMSHAFT	1	1			
10	148-25353-00	SHIM, CAMSHAFT	1	1			
11	90387-1409E	COLLAR	1	1			
12	148-25359-00	SEAL, CAMSHAFT	1	1			
13	4HC-25355-00	LEVER, CAMSHAFT	1	1			
14	90101-06291	BOLT	1	1			
15	4HC-2533A-00	PLATE, INDICATOR	1	1			
16	90206-14093	WASHER, WAVE	1	1			
17	90201-220J8	WASHER, PLATE	1	1			
18	90185-14163	NUT, SELF-LOCKING	1	1			



4HC1010-5250

D4

FIG. 26 STEERING HANDLE. CABLE

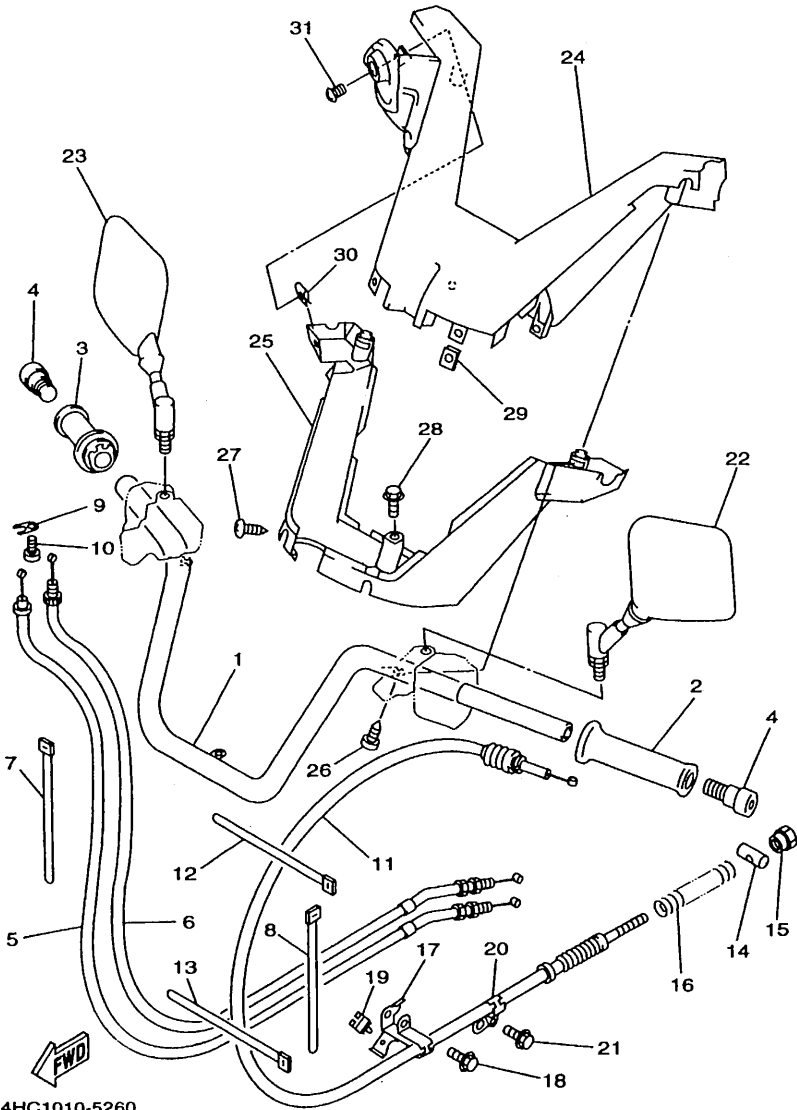


4HC1010-5260

REF. NO.	PART NO.	DESCRIPTION			REMARKS
			4UC2	4UD2	
1	4HC-26110-01	HANDLE COMP.	1	1	
2	4FM-26241-01	GRIP (LEFT)	1	1	
3	4FM-26240-00	GRIP ASSY	1	1	
4	33M-26246-00	END, GRIP	2	2	
5	4HC-26311-00	CABLE, THROTTLE 1	1	1	
6	4HC-26312-00	CABLE, THROTTLE 2	1	1	
7	90464-20044	CLAMP	1	1	
8	90464-15195	CLAMP	1	1	
9	5H0-26393-00	HOLDER	1	1	
10	98507-05008	SCREW, PAN HEAD	1	1	
11	4HC-26351-00	CABLE, BRAKE	1	1	
12	90460-15126	CLAMP, HOSE	1	1	
13	90464-15195	CLAMP	1	1	
14	90249-12008	PIN	1	1	
15	90179-06411	NUT	1	1	
16	90501-165J7	SPRING, COMPRESSION	1	1	
17	4HC-2637G-00	HOLDER, WIRE	1	1	
18	95027-06030	BOLT, FLANGE	1	1	
19	90464-23199	CLAMP	1	1	
20	4HC-2637H-00	HOLDER, WIRE 2	1	1	
21	95027-06010	BOLT, FLANGE	1	1	
22	3TB-26280-00	REAR VIEW MIRROR ASSY (LEFT)	1	1	
23	3TB-26290-00	REAR VIEW MIRROR ASSY (RIGHT)	1	1	
24	4HC-26230-00	HANDLE COVER ASSY	1	1	
25	4HC-26144-00	COVER, HANDLEBAR LOWER 1	1	1	
26	97707-50016	SCREW, TAPPING	2	2	
27	90167-05025	SCREW, TAPPING	4	4	

D5

FIG. 26 STEERING HANDLE. CABLE



4HC1010-5260

REF. NO.	PART NO.	DESCRIPTION			REMARKS
			4UC2	4UD2	
28	90159-05028	SCREW, WITH WASHER	1	1	
29	90183-05042	NUT, SPRING	4	4	
30	90183-05042	NUT, SPRING	1	1	
31	90167-05025	SCREW, TAPPING	1	1	

D6

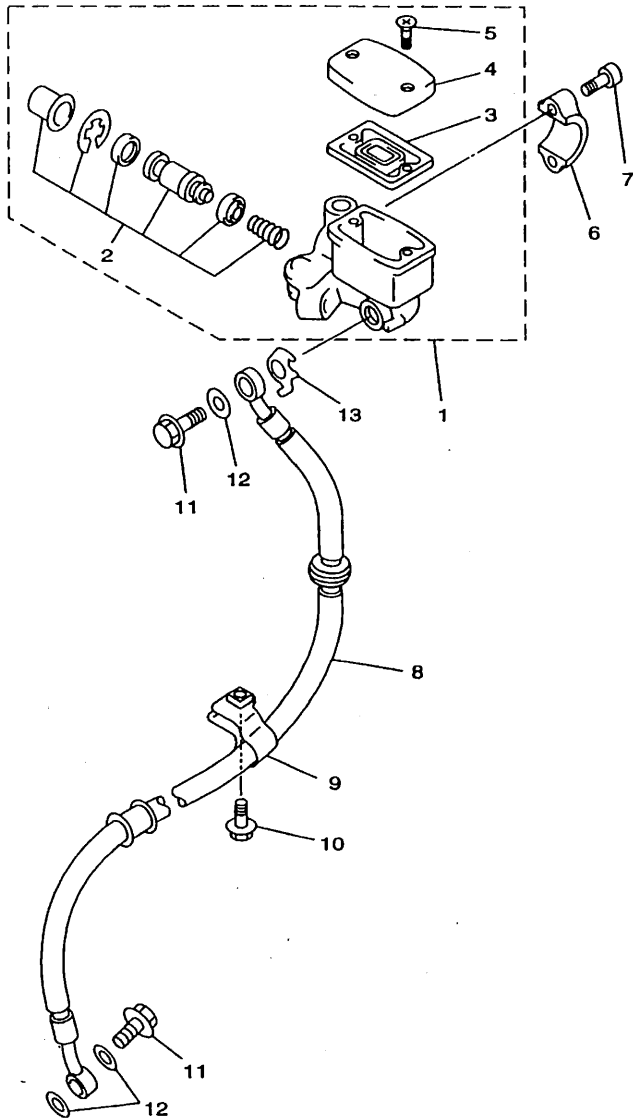


FIG. 27 FRONT MASTER CYLINDER

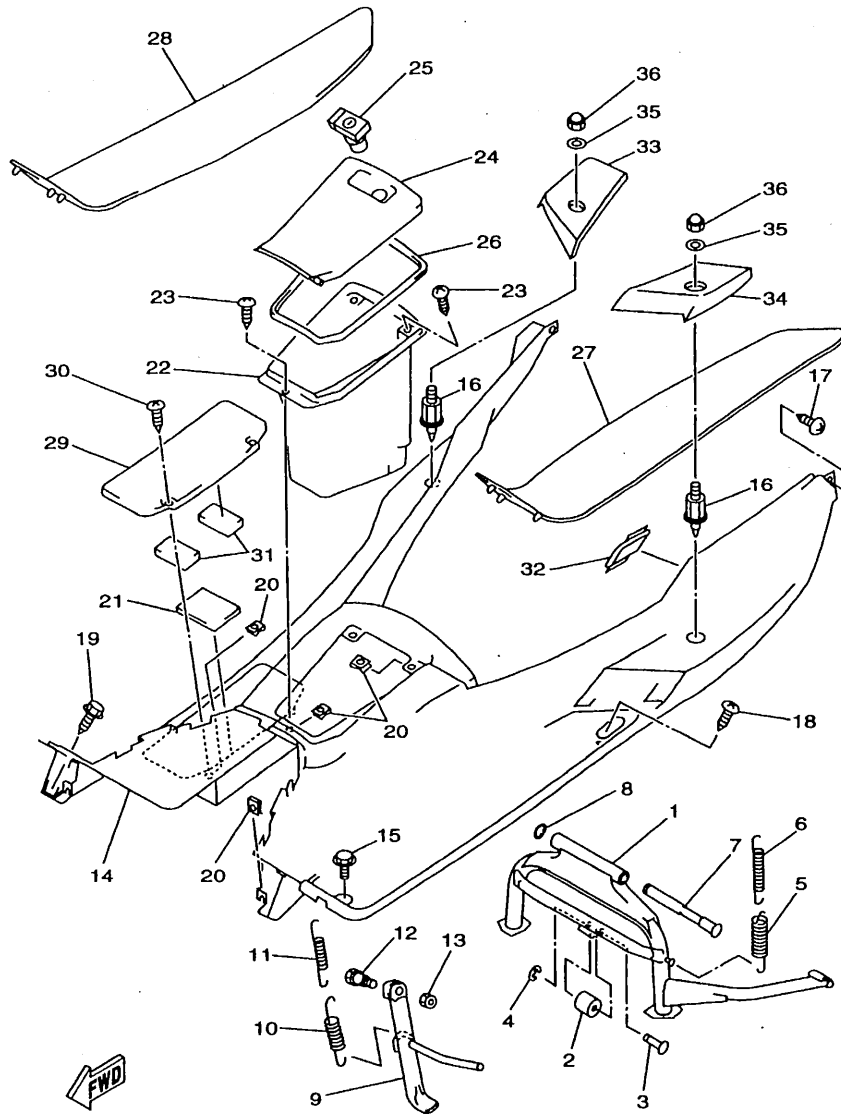
REF. NO.	PART NO.	DESCRIPTION	4UC2	4UD2	REMARKS
1	2KF-25850-00	MASTER CYLINDER ASSY	1	1	
2	59X-W0041-00	.CYLINDER KIT, MASTER	1	1	
3	55U-25854-00	.DIAPHRAGM, RESERVOIR	1	1	
4	2KF-25852-01	.CAP, RESERVOIR	1	1	
5	98706-04012	.SCREW, FLAT HEAD	2	2	
6	56A-25867-00	BRACKET, MASTER CYLINDER	1	1	
7	91317-06025	BOLT	2	2	
8	4HC-25872-00	HOSE, BRAKE 1	1	1	
9	4HC-25876-00	HOLDER, BRAKE HOSE 2	1	1	
10	95807-06020	BOLT, FLANGE	1	1	
11	90401-10159	BOLT, UNION	2	2	
12	90201-10118	WASHER, PLATE	3	3	
13	4HC-25844-00	WASHER, LOCK	1	1	



4HC1010-5270

D7

FIG. 28 STAND, FOOTREST

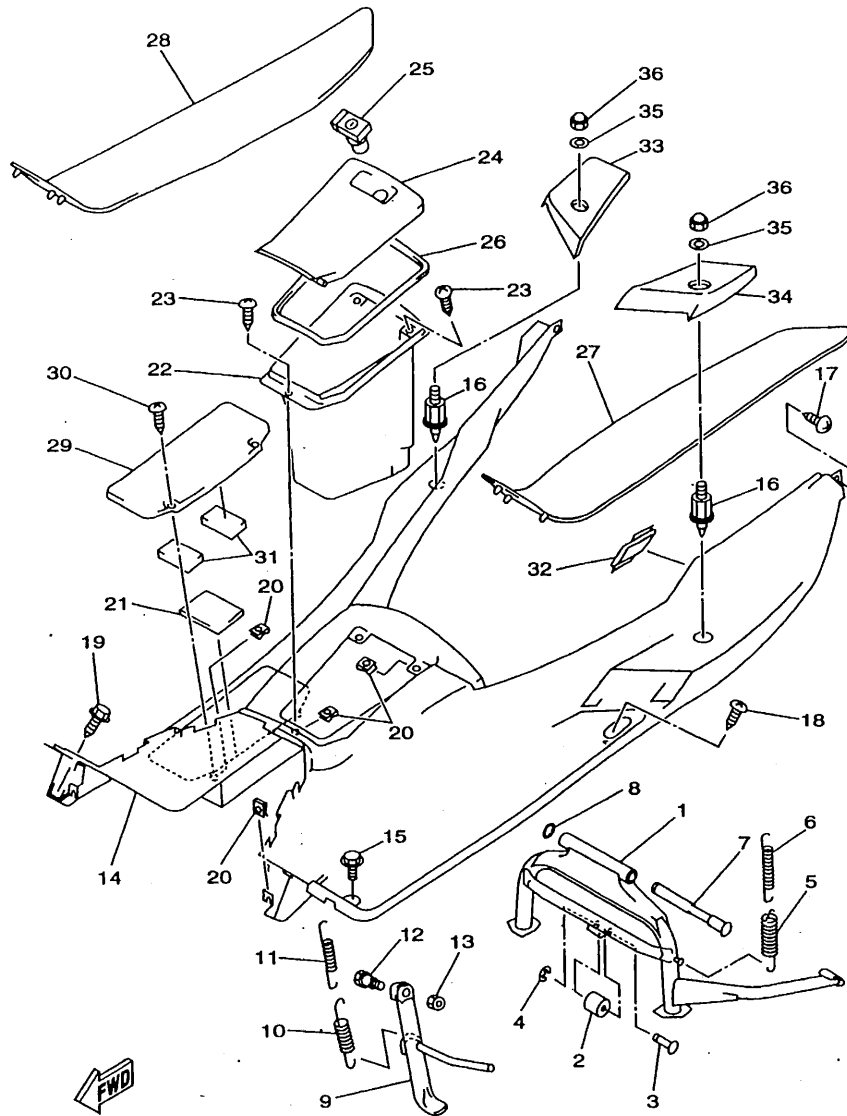


4UC1332-6280

REF. NO.	PART NO.	DESCRIPTION			REMARKS
			4UC2	4UD2	
1	4HC-27111-00	STAND, MAIN	1	1	
2	4HC-27114-00	STOPPER, MAIN STAND	1	1	
3	4HC-27112-00	SHAFT, MAIN STAND	1	1	
4	99001-04600	CIRCLIP	1	1	
5	90506-40175	SPRING, TENSION	1	1	
6	90506-20158	SPRING, TENSION	1	1	
7	58K-27112-02	SHAFT, MAIN STAND	1	1	
8	93430-12008	CIRCLIP	1	1	
9	4HC-27311-00	STAND, SIDE	1	1	
10	90506-26225	SPRING, TENSION	1	1	
11	90506-18224	SPRING, TENSION	1	1	
12	90109-10473	BOLT	1	1	
13	90185-10110	NUT, SELF-LOCKING	1	1	
14	4HC-27481-00	BOARD, FOOTREST	1	1	
15	90119-06060	BOLT, WITH WASHER	2	2	
16	4UC-27434-00	BOLT	2	2	
17	90167-05025	SCREW, TAPPING	2	2	
18	97707-50016	SCREW, TAPPING	4	4	
19	90163-05006	SCREW, TAPPING	2	2	
20	90183-05042	NUT, SPRING	9	9	
21	4HC-27415-00	PLATE, FOOTREST	1	1	
22	4HC-2177A-00	BOX	1	1	
23	97707-50016	SCREW, TAPPING	3	3	
24	4HC-27453-00	COVER 1	1	1	
25	35R-21708-31	LOCK ASSY 2	1	1	GRAY
26	4HC-27485-00	SEAL	1	1	
27	4HC-27483-00	MAT 1	1	1	

D8

FIG. 28 STAND. FOOTREST

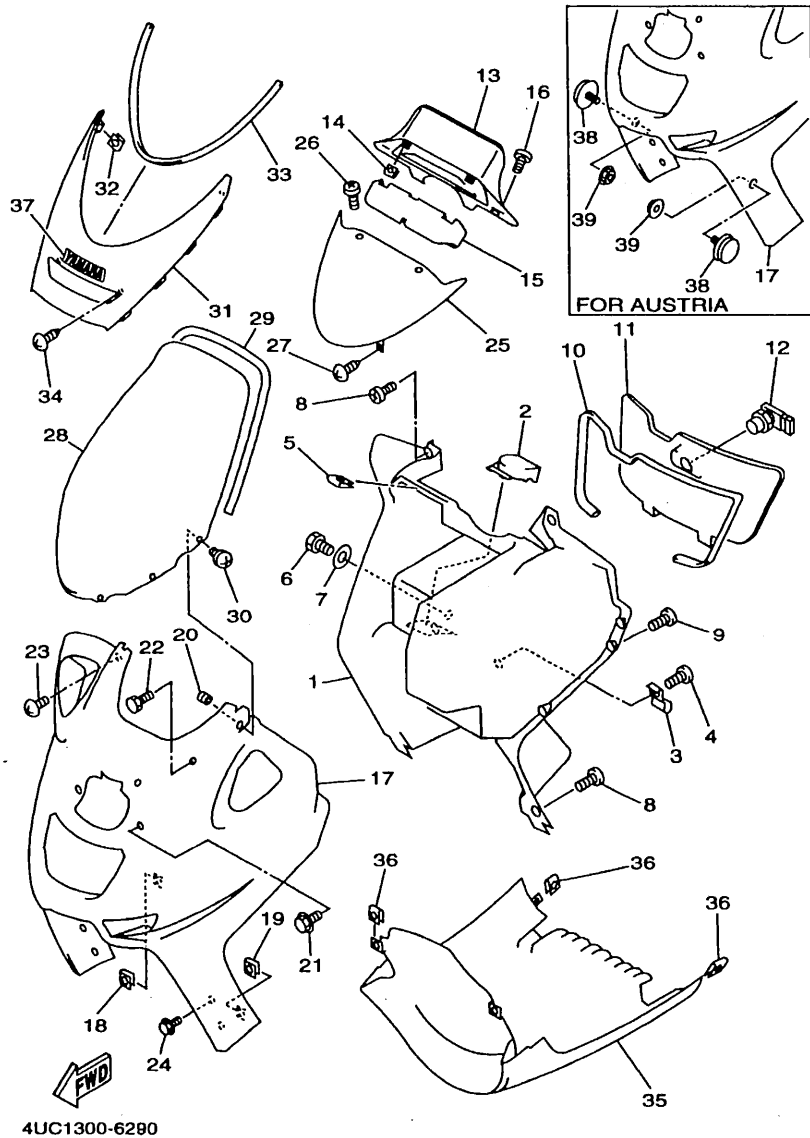


4UC1332-6280

D9

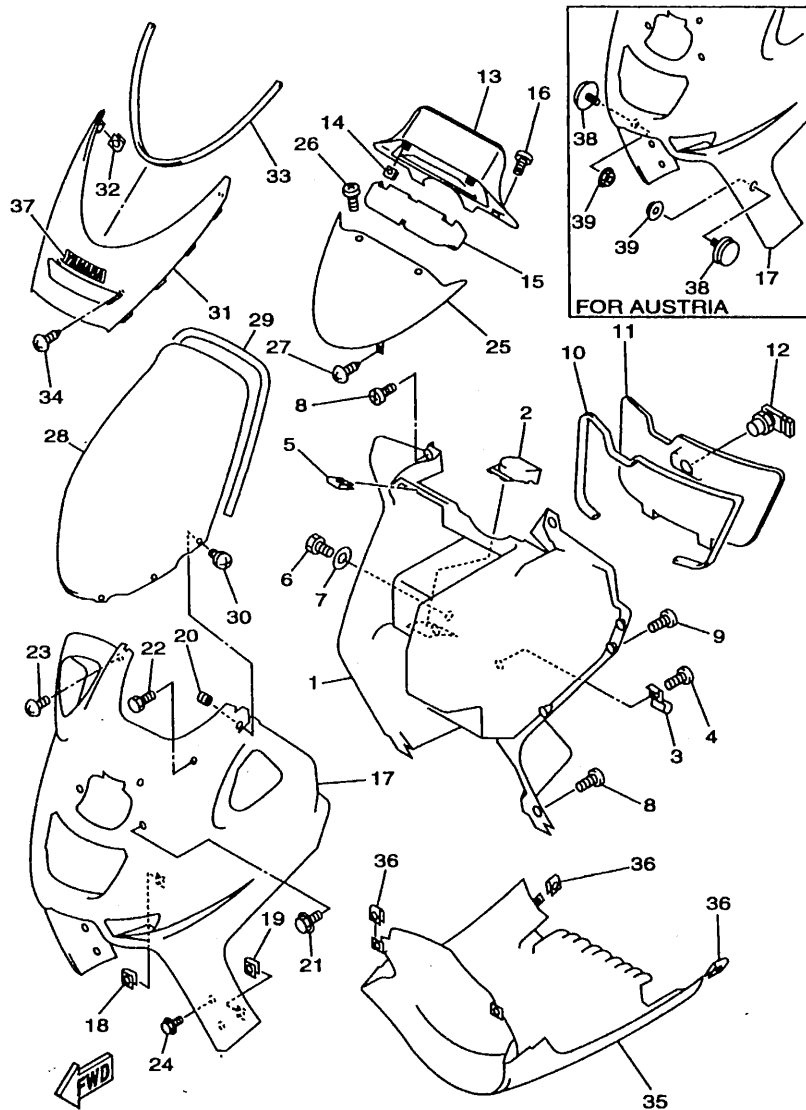
REF. NO.	PART NO.	DESCRIPTION	4UC2	4UD2	REMARKS
28	4HC-27484-00	MAT 2	1	1	
29	4HC-27463-00	COVER 2	1	1	
30	90167-05025	SCREW, TAPPING	2	2	
31	22F-24181-00	DAMPER, LOCATING 1	2	2	
32	4HC-27475-00	CAP 1	1	1	
33	4UC-27444-00	COVER, REAR FOOTREST	1	1	
34	4UC-27433-00	COVER, REAR FOOTREST	1	1	
35	90201-06055	WASHER, PLATE	4	4	
36	90176-06055	NUT, CROWN	2	2	

FIG. 29 LEG SHIELD



REF. NO.	PART NO.	DESCRIPTION	4UC2	4UD2	REMARKS
1	4HC-28300-00	LEG SHIELD ASSY	1	1	
2	4HC-28365-00	COVER	1	1	
3	4HC-21796-00	HINGE	2	2	
4	97707-40512	SCREW, TAPPING	2	2	
5	90183-05042	NUT, SPRING	2	2	
6	97007-06012	BOLT	1	1	
7	90201-06008	WASHER, PLATE	1	1	
8	90167-05025	SCREW, TAPPING	4	4	
9	97707-50016	SCREW, TAPPING	6	6	
10	4HC-28371-11	DAMPER	1	1	
11	4HC-2478A-10	LID ASSY	1	1	
12	35R-21708-31	LOCK ASSY 2	1	1	GRAY
13	4HC-2836K-00	PANEL, INNER 1	1	1	
14	90183-05042	NUT, SPRING	2	2	
15	4HC-2836T-00	DAMPER, LOCATING 1	1	1	
16	90167-05025	SCREW, TAPPING	2	2	
17	4HC-28351-01-P1	BODY, COWLING	1	1	DPBMC
	4HC-28351-10-P1	BODY, COWLING		1	DPBMC FOR AUT
	4HC-28351-01-3H	BODY, COWLING	1	1	NSD
	4HC-28351-10-3H	BODY, COWLING		1	NSD FOR AUT
	4HC-28351-01-P0	BODY, COWLING	1	1	DRC2
	4HC-28351-10-P0	BODY, COWLING		1	DRC2 FOR AUT
	4HC-28351-01-4B	BODY, COWLING	1	1	BL2
	4HC-28351-10-4B	BODY, COWLING		1	BL2 FOR AUT
18	3VP-21535-00	NUT 1	4	4	
19	90183-05042	NUT, SPRING	6	6	
20	90179-05523	NUT	6	6	

D10



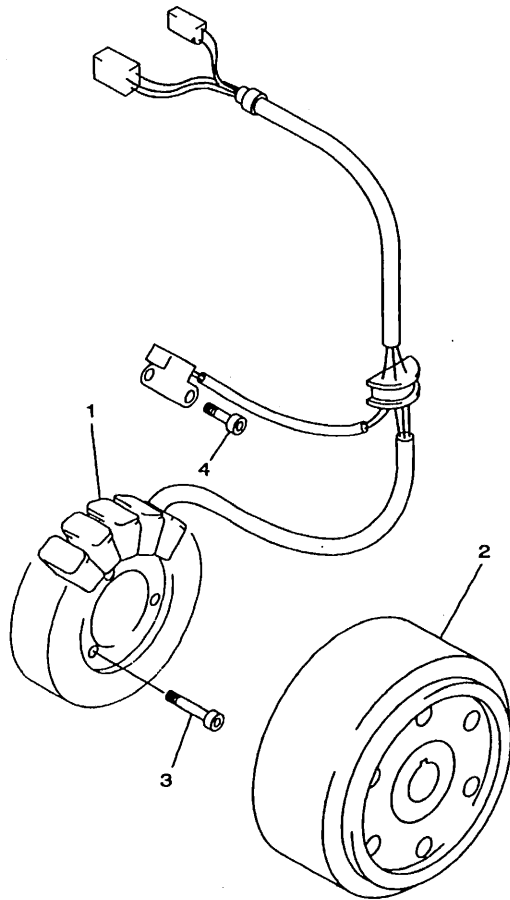
4UC1300-6290

FIG. 29 LEG SHIELD

REF. NO.	PART NO.	DESCRIPTION	4UC2	4UD2	REMARKS
21	90119-06060	BOLT, WITH WASHER	2	2	
22	90109-063F1	BOLT	2	2	
23	97707-50016	SCREW, TAPPING	2	2	
24	90163-05006	SCREW, TAPPING	4	4	
25	4HC-2836L-00	PANEL, INNER 2	1	1	
26	90167-05025	SCREW, TAPPING	2	2	
27	90167-05025	SCREW, TAPPING	2	2	
28	4HC-2837U-00	SCREEN	1	1	
29	4EJ-28376-00	TRIM	1	1	
30	90150-05024	SCREW, ROUND HEAD	6	6	
31	4HC-28345-00-7B	MOLE 1	1	1	BIB2
32	90183-05042	NUT, SPRING	2	2	
33	1NL-28347-01	MOLE 3	1	1	
34	90167-05025	SCREW, TAPPING	4	4	
35	4HC-28385-11	COVER, LOWER	1	1	
36	90183-05042	NUT, SPRING	4	4	
37	4HC-28315-00	EMBLEM	1	1	
38	4AG-85111-00	REFLECTOR, FRONT 1	2		FOR AUT
39	95707-06500	NUT, FLANGE	2		FOR AUT

D11

FIG. 30 GENERATOR



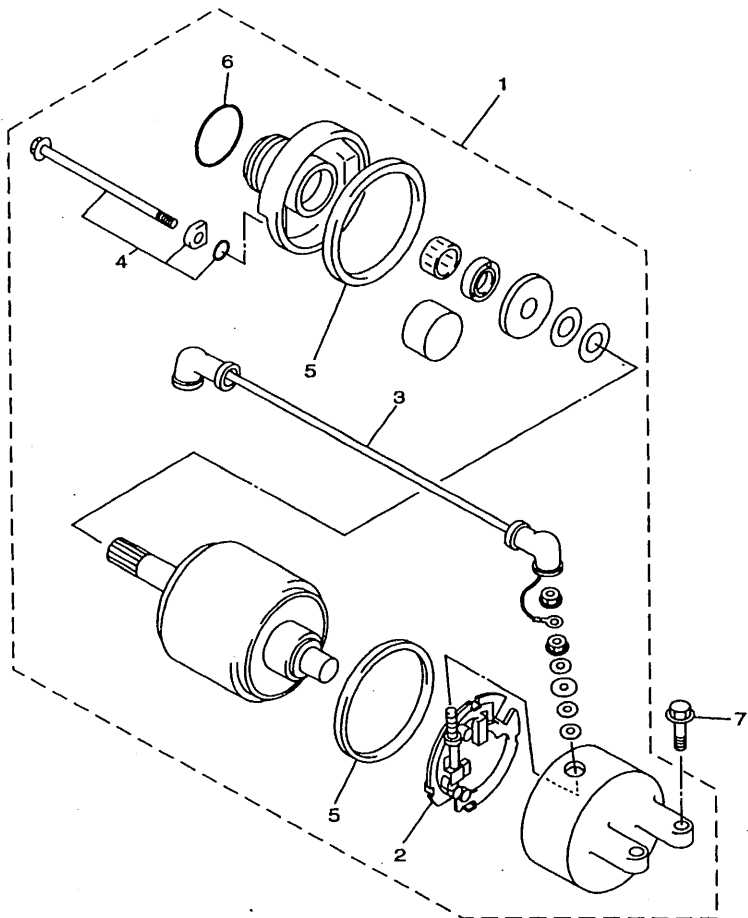
REF. NO.	PART NO.	DESCRIPTION	4UC2	4UD2	REMARKS
1	4HC-81410-00	STATOR ASSY	1	1	
2	4HC-81450-00	ROTOR ASSY	1	1	
3	91317-05025	BOLT	3	3	
4	91317-05012	BOLT	2	2	



4HC1010-5300

D12

FIG. 31 STARTING MOTOR



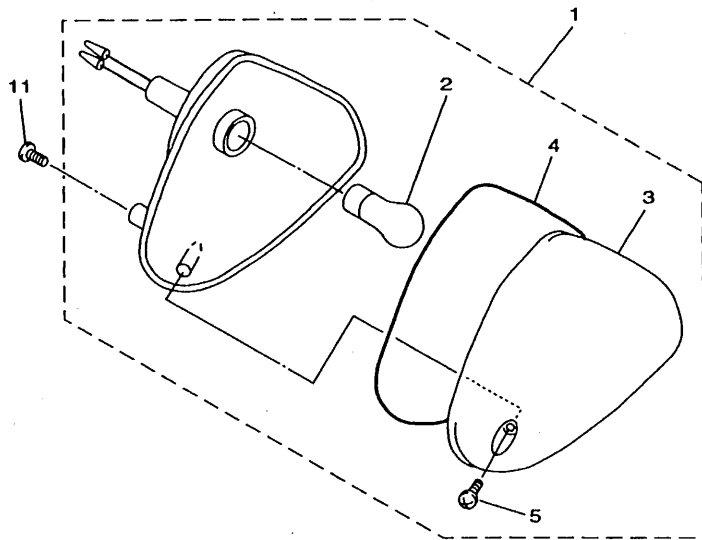
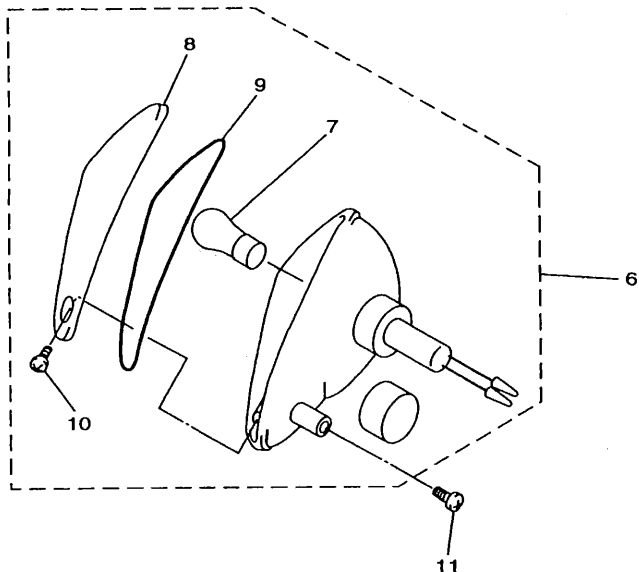
REF. NO.	PART NO.	DESCRIPTION	4UC2	4UD2	REMARKS
1	4HC-81800-00	STARTING MOTOR ASSY	1	1	
2	3KS-81840-00	.BRUSH HOLDER ASSY	1	1	
3	4HC-81815-00	.CORD, STARTER MOTOR	1	1	
4	3WP-81826-00	.BOLT	2	2	
5	11H-81844-00	.GASKET	2	2	
6	1FK-81847-00	.O-RING	1	1	
7	95817-06025	BOLT, FLANGE	2	2	



4HC1010-5310

D13

FIG. 32 FLASHER LIGHT



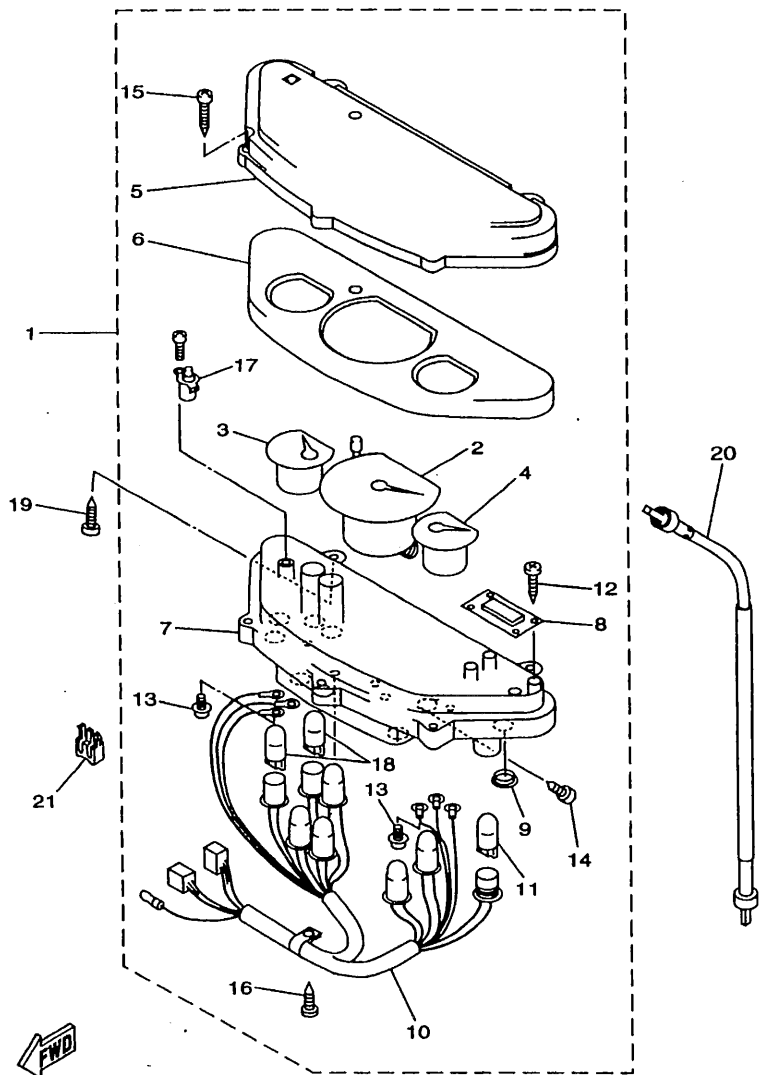
REF. NO.	PART NO.	DESCRIPTION	4UC2	4UD2	REMARKS
1	3XW-83310-10	FRONT FLASHER LIGHT ASSY 1	1	1	
2	32H-83331-00	.BULB, FLASHER (12V-21W)	1	1	
3	3XW-83312-00	.LENS, FLASHER	1	1	
4	3XW-83313-00	.GASKET, FLASHER LENS	1	1	
5	97707-40120	.SCREW, TAPPING	1	1	
6	3XW-83320-10	FRONT FLASHER LIGHT ASSY 2	1	1	
7	32H-83331-00	.BULB, FLASHER (12V-21W)	1	1	
8	3XW-83322-00	.LENS, FLASHER 2	1	1	
9	3XW-83313-00	.GASKET, FLASHER LENS	1	1	
10	97707-40120	.SCREW, TAPPING	1	1	
11	97707-50016	SCREW, TAPPING	4	4	



4HC1010-5320

D14

FIG. 33 METER



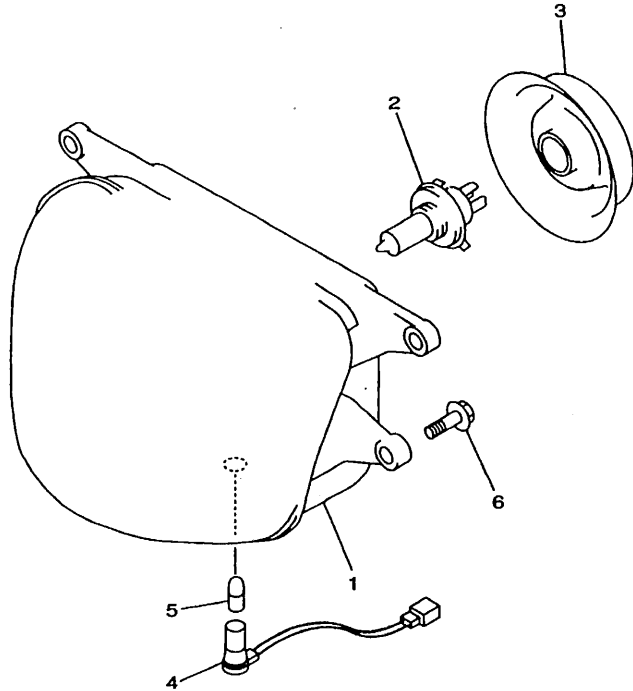
4HC1010-5330

REF. NO.	PART NO.	DESCRIPTION	4UC2	4UD2	REMARKS
1	4HC-83500-00	SPEEDOMETER ASSY	1	1	
	4HC-83500-21	SPEEDOMETER ASSY	1		FOR GBR
2	4HC-83510-00	.SPEEDOMETER ASSY	1	1	
	4HC-83510-21	.SPEEDOMETER ASSY	1		FOR GBR
3	4HC-85750-00	.FUEL METER ASSY	1	1	
4	4HC-83590-00	.WATER TEMPERATURE ASSY	1	1	
5	4HC-83511-00	.LENS, SPEEDOMETER	1	1	
6	4HC-83612-00	.COVER, METER PANEL	1	1	
7	4HC-8353H-00	.CASE, UNDER	1	1	
8	4HC-83740-00	.DIGITAL CLOCK ASSY	1	1	
9	3SX-8352K-00	.PLUG, BLIND	2	2	
10	4HC-83509-00	.SOCKET CORD ASSY	1	1	
11	1YT-83517-00	.BULB (12V-1.7W, T10)	6	6	
12	97707-30512	.SCREW, TAPPING	4	4	
13	90159-03102	.SCREW, WITH WASHER	6	6	
14	90167-04021	.SCREW, TAPPING	2	2	
15	97707-40016	.SCREW, TAPPING	4	4	
16	97707-40014	.SCREW, TAPPING	1	1	
17	4HC-83964-00	.SWITCH	1	1	
18	4R0-83517-00	.BULB (12V-3.4W T10)	2	2	
19	97707-50016	SCREW, TAPPING	2	2	
20	4HC-83550-00	SPEEDOMETER CABLE ASSY	1	1	
21	4HC-2837G-00	LOCK 1	2	2	

D15

FIG. 34 HEADLIGHT

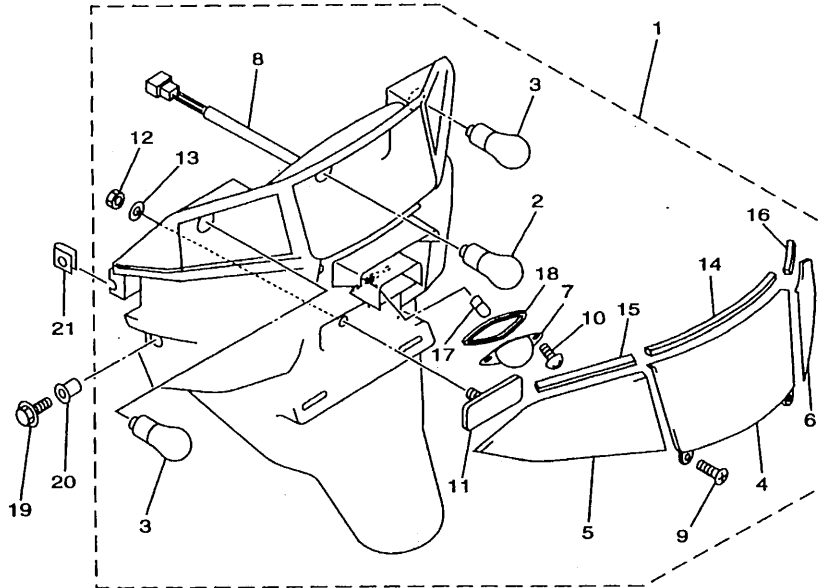
REF. NO.	PART NO.	DESCRIPTION	4UC2	4UD2	REMARKS
1	4UC-84320-00	LENS ASSY	1	1	FOR GBR
	4UC-84320-10	LENS ASSY	1		
2	8G9-84314-00	BULB (12V-60/55W)	1	1	
3	4SV-84397-00	COVER, SOCKET	1	1	
4	4UC-84312-00	HOLDER, SOCKET	1	1	
5	4SV-84347-00	BULB (12V-5W)	1	1	
6	95807-06020	BOLT, FLANGE	4	4	



4UC1332-6340

E2

FIG. 35 TAILLIGHT



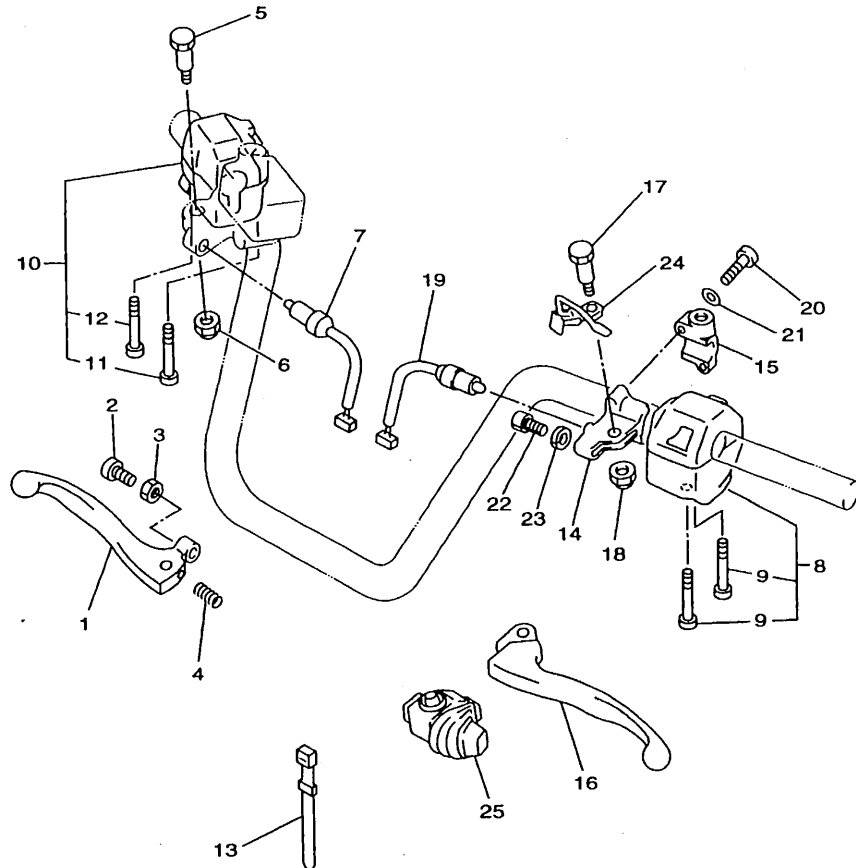
REF. NO.	PART NO.	DESCRIPTION	4UC2	4UD2	REMARKS
1	4HC-84710-00	TAILLIGHT UNIT ASSY	1	1	
2	31L-84714-00	.BULB, TAILLIGHT (12V-21/5W)	1	1	
3	2AE-83311-00	.BULB, FLASHER (12V-21W)	2	2	
4	4HC-84721-00	.LENS, TAILLIGHT	1	1	
5	4HC-83332-00	.LENS, FLASHER	1	1	
6	4HC-83342-00	.LENS, FLASHER 2	1	1	
7	4HC-84743-00	.LENS, LICENCE LIGHT	1	1	
8	4HC-84735-00	.CORD ASSY	1	1	
9	97706-40116	.SCREW, TAPPING	2	2	
10	97702-40116	.SCREW, TAPPING	2	2	
11	3Y6-85130-02	.REAR REFLECTOR ASSY	1	1	
12	95707-05600	.NUT, FLANGE	1	1	
13	92902-05100	.WASHER, SPRING	1	1	
14	4HC-84704-00	.GASKET, TAILLIGHT	1	1	
15	4HC-83313-00	.GASKET, FLASHER LENS	1	1	
16	4HC-83343-00	.GASKET, FLASHER LENS	1	1	
17	4HC-84744-00	.BULB (12V-5W)	1	1	
18	4HC-84545-00	.GASKET, LENS	1	1	
19	95807-06014	BOLT, FLANGE	2	2	
20	90387-0700D	COLLAR	2	2	
21	90183-05042	NUT, SPRING	4	4	



4HC1010-5351

E3

FIG. 36 HANDLE SWITCH. LEVER

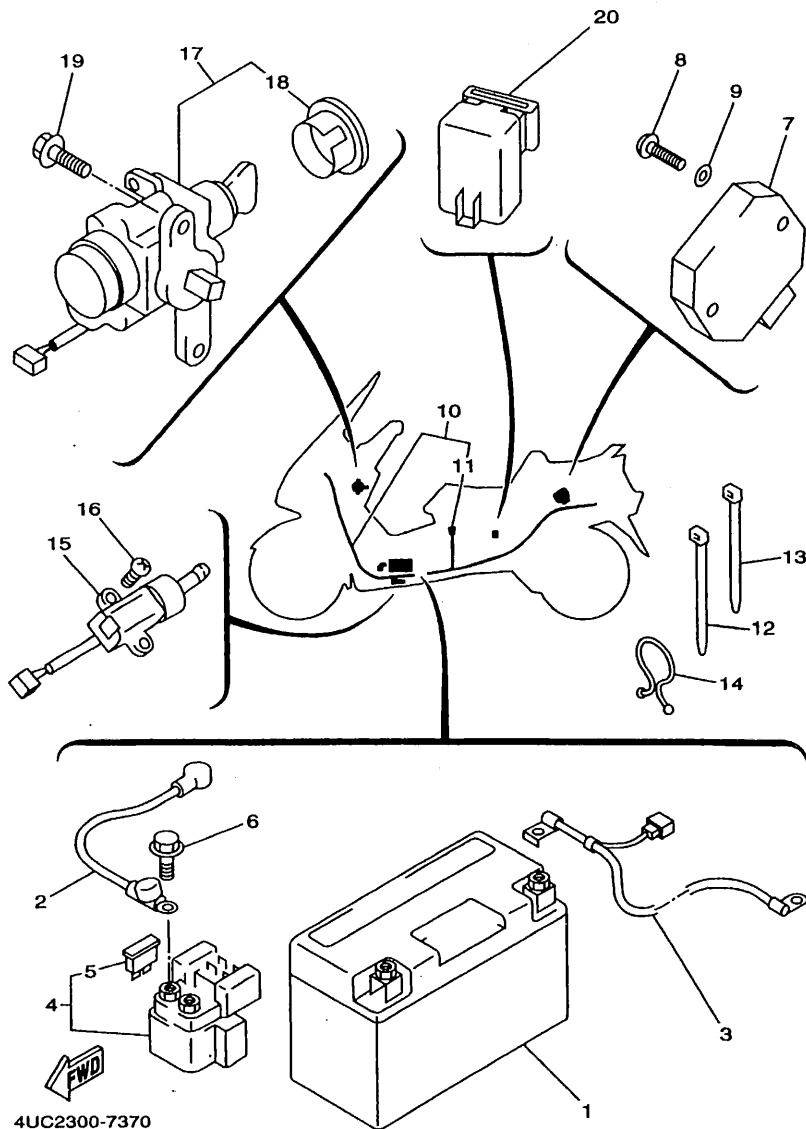


REF. NO.	PART NO.	DESCRIPTION	4UC2	4JD2	REMARKS
1	3RN-83922-00	LEVER 2	1	1	
2	90149-06131	SCREW	1	1	
3	90170-06010	NUT	1	1	
4	90501-10312	SPRING, COMPRESSION	1	1	
5	90109-06577	BOLT	1	1	
6	95607-06100	NUT, U	1	1	
7	4FU-83980-00	FRONT STOP SWITCH ASSY	1	1	
8	4HC-83972-01	SWITCH, HANDLE 4	1	1	
9	98507-05035	.SCREW, PAN HEAD	2	2	
10	4UC-83963-00	SWITCH, HANDLE 3 (RIGHT)	1	1	
11	98507-05040	.SCREW, PAN HEAD	1	1	
12	98507-05045	.SCREW, PAN HEAD	1	1	
13	90464-05141	CLAMP	1	1	
14	4HC-82911-00	HOLDER, LEVER 1	1	1	
15	33G-82913-01	HOLDER, LEVER LOWER 1	1	1	
16	3RN-83912-00	LEVER 1	1	1	
17	90109-06799	BOLT	1	1	
18	95607-06100	NUT, U	1	1	
19	4HC-83980-00	FRONT STOP SWITCH ASSY	1	1	
20	98507-05020	SCREW, PAN HEAD	2	2	
21	92907-05600	WASHER, PLATE	2	2	
22	90123-08046	BOLT	1	1	
23	90179-08148	NUT	1	1	
24	4HC-83965-00	LEVER, LOCK	1	1	
25	36X-26372-10	COVER, HANDLE LEVER 1	1	1	



4HC1010-5360

E4



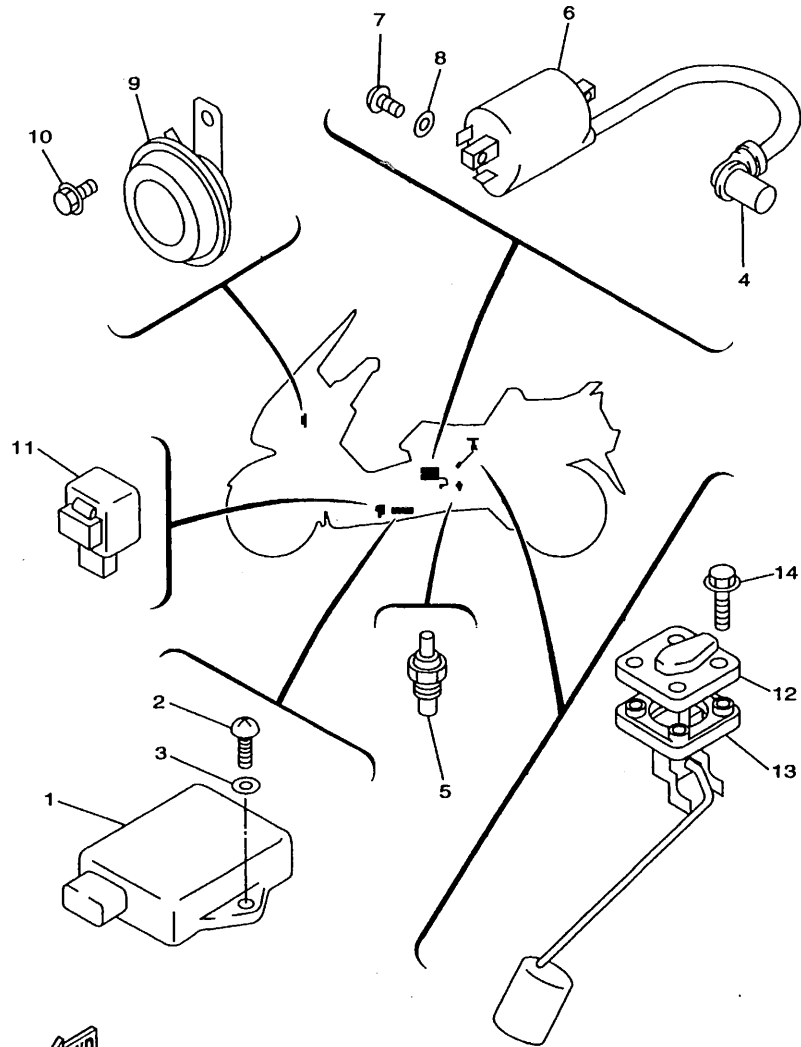
4UC2300-7370

FIG. 37 ELECTRICAL 1

REF. NO.	PART NO.	DESCRIPTION	4UC2	4UD2	REMARKS
1	4UC-82100-01	BATTERY ASSY	1	1	
2	4HC-82115-00	WIRE, PLUS LEAD	1	1	
3	4HC-82116-00	WIRE, MINUS LEAD	1	1	
4	4FL-81940-00	STARTER RELAY ASSY	1	1	
5	2GH-82151-00	.FUSE (20A-BL)	2	2	
6	95027-06008	BOLT, FLANGE	2	2	
7	4HM-81960-01	RECTIFIER & REGULATOR ASSY	1	1	
8	98507-06025	SCREW, PAN HEAD	2	2	
9	92907-06600	WASHER, PLATE	2	2	
10	4UC-82590-00	WIRE HARNESS ASSY	1	1	
11	7LY-82151-00	.FUSE (3A-BL)	2	2	
12	90464-15195	CLAMP	1	1	
13	90464-13073	CLAMP	1	1	
14	341-82594-00	CLAMP	1	1	
15	3LD-82566-50	SWITCH, SIDE STAND	1	1	
16	90157-05079	SCREW, PAN HEAD	2	2	
17	4UC-82501-00	MAIN SWITCH STEERING LOCK	1	1	
18	4UC-82552-00	.CAP, SWITCH	1	1	
19	90109-066A7	BOLT	2	2	
20	4HC-81950-00	RELAY ASSY	1	1	

E5

FIG. 38 ELECTRICAL 2



REF. NO.	PART NO.	DESCRIPTION	4UC2	4UD2	REMARKS
1	4UC-82305-00	IGNITOR UNIT ASSY	1	1	
2	98507-06020	SCREW, PAN HEAD	1	1	
3	92907-06600	WASHER, PLATE	1	1	
4	4BP-82370-00	PLUG CAP ASSY	1	1	
5	11H-83591-00	THERMO UNIT	1	1	
6	4HC-82310-00	IGNITION COIL ASSY	1	1	
7	98507-05016	SCREW, PAN HEAD	2	2	
8	92907-05600	WASHER, PLATE	2	2	
9	3TB-83371-01	HORN	1	1	
10	95807-06010	BOLT, FLANGE	1	1	
11	3GM-83350-01	FLASHER RELAY ASSY	1	1	
12	4HC-85752-00	SENDER UNIT ASSY, FUEL METER	1	1	
13	5G3-85753-00	GASKET, SENDER UNIT	1	1	
14	90119-05071	BOLT, WITH WASHER	4	4	



4UC2300-7380

E6

INDEX

NUMERICAL INDEX

PART NO.	GRID NO.	PART NO.	GRID NO.	PART NO.	GRID NO.	PART NO.	GRID NO.	PART NO.	GRID NO.	PART NO.	GRID NO.	PART NO.	GRID NO.
59X-W0041-00	D- 7	4HC-12405-00	B- 7	2WJ-14367-00	B- 12	4HC-15451-00	B- 15	4HC-2171L-11	C- 8	4HC-23442-10	C- 12		
4HM-W0045-00	D- 3	4HC-12411-00	B- 7	4KL-14384-00	B- 11	4HC-15453-00	B- 15	4UD-2171L-10	C- 8	164-23462-00	C- 11		
4FU-W0047-50	D- 3	4HC-12413-00	B- 7	25N-14385-00	B- 11	4HC-15461-00	B- 14	4HC-2171M-11	C- 8	4HC-24110-00	C- 13		
51L-W0048-00	D- 3	4HC-12421-00	B- 6	4KL-14386-00	B- 11	4HC-15471-00	B- 15	4UD-2171M-10	C- 8	4HC-2414A-00	C- 13		
4FU-W0057-50	D- 3	4HC-12422-00	B- 6	4HC-14390-01	B- 11	4HC-15472-00	B- 15	4HC-2171N-10	C- 8	25H-24180-00	C- 13		
4HC-W2536-00	D- 4	4HC-12426-00	B- 6	4HC-14397-00	B- 11	3KJ-15481-00	B- 15	4HC-21721-00	C- 8	22F-24181-00	D- 9		
4HC-Y2171-20-3H	C- 8	4HC-12428-00	B- 6	5HO-14397-00	B- 11	4HC-15491-00	B- 15	4JP-21753-00	C- 13	4HC-24217-00	C- 14		
4HC-Y2171-30-P0	C- 8	4HC-12438-00	B- 6	4KL-14404-00	B- 11	4HC-15492-00	B- 14	4HC-2177A-00	D- 8	4HC-24311-00	C- 13		
4HC-Y2171-30-P1	C- 8	4HC-12446-00	B- 6	4HC-14411-00	B- 10	4HC-15499-00	B- 15	4HC-2177F-00	C- 15	4HC-24312-00	C- 13		
4HC-Y2171-30-4B	C- 8	4HC-12450-00	B- 6	4HC-14412-00	B- 10	4HC-15512-00	C- 2	4HC-21778-01	C- 9	4HC-24313-00	C- 13		
4HC-11101-00	B- 2	4HC-12459-00	B- 6	4HC-14429-00	B- 11	4HC-15517-00	C- 2	4HC-21779-01	C- 9	4HC-24318-00	C- 13		
4GA-1111F-00	B- 5	4UC-12461-00	B- 7	4HC-14437-00	B- 10	2HT-15521-00	C- 2	4HC-21781-10	C- 8	1AE-24366-00	C- 13		
4GO-11133-10	B- 2	4HC-12462-00	B- 7	4HC-14451-00	B- 10	4HC-15590-00	C- 2	4HC-21796-00	D- 10	214-24535-00	B- 11		
4KB-11145-00	B- 5	4HC-12476-00	B- 7	4HC-14452-00	B- 10	4HC-16111-00	C- 5	1AA-21815-00	C- 9	1FK-24560-00	C- 13		
4HC-11160-00	B- 2	4HC-12481-00	B- 7	4HC-14453-00	B- 10	4HC-16151-01	C- 5	4HC-21816-00	C- 9	54K-24602-00	C- 13		
4HC-11166-00	B- 2	4HC-12482-00	B- 7	4HC-14472-00	B- 10	1XX-16611-03	C- 3	4HC-21817-00	C- 9	4HC-2470F-A0	C- 14		
4HC-11181-00	B- 2	4HC-12483-00	B- 7	4KL-14536-00	B- 11	4HC-16620-00	C- 3	4HC-21871-00	C- 8	4HC-24723-00	C- 15		
3GC-11186-00	B- 2	4HC-12484-00	B- 7	4HC-14555-00	B- 11	2YM-16626-00	C- 3	1AA-21874-00	C- 9	4HC-2473F-10	C- 14		
3GC-11187-00	B- 2	4HC-12485-00	B- 7	4HC-14592-00	B- 11	4HC-17211-01	C- 5	4HC-2197J-00	C- 14	4HC-2473R-01	C- 14		
4HC-11311-00	B- 2	4HC-12576-00	B- 7	4UC-14611-00	B- 13	4HC-17411-01	C- 5	4HC-22100-00	C- 10	4HC-2473T-10	C- 14		
4HC-11351-00	B- 2	4HC-12577-00	B- 7	3MT-14613-00	B- 13	4HC-17421-01	C- 5	4HC-22210-11	C- 10	4HC-24730-A0	C- 14		
4HC-11400-00	B- 3	4HC-12591-00	B- 7	4HC-14628-00	B- 13	4HC-17611-00	C- 3	164-22216-00	B- 14	4HC-24738-00	C- 15		
4HC-11603-00	B- 3	4HC-13300-00	B- 9	4HC-14708-00	B- 13	4UC-17620-00	C- 3		C- 10	1T4-24741-00	C- 14		
4HC-11605-00	B- 3	4HC-13325-00	B- 9	4UC-14711-00	B- 13	4HC-17623-00	C- 3	4HC-23100-11	C- 11		C- 15		
4HC-11607-00	B- 3	51Y-13411-00	B- 9	4BH-14714-00	B- 13	4UC-17632-00	C- 3	4HC-23110-10	C- 11	4HC-2475M-00	C- 14		
4HC-11631-00-97	B- 3	4HC-13475-00	B- 9	4BD-14766-00	B- 13	4HC-17639-00	C- 3	4HC-23111-00	C- 11	4HC-24754-00	C- 14		
4JH-11633-00	B- 3	4HC-13586-00	B- 10		B- 13	4HC-17641-00	C- 3	3J2-23114-00	C- 11	4HC-24758-00	C- 14		
4HC-11636-00	B- 3	4HC-13595-00	B- 10	4HC-1490A-00	B- 11	4HC-17653-00	C- 3	4HC-23125-10	C- 11	4HC-2476U-00	C- 15		
4HC-11638-00	B- 3	4HC-13910-00	C- 13	4HC-1490H-00	B- 11	4HC-17654-00	C- 3	4HC-23126-10	C- 11	4HC-2476V-00	C- 6		
5HO-12111-00	B- 4	4HC-13929-00	B- 10	4UC-1490J-00	B- 12	4HC-17660-00	C- 3	4HC-23136-10	C- 11	4HC-2477A-A0	C- 14		
4HC-12113-00	B- 4	4HC-1410A-00	B- 11	4GY-14958-00	B- 11	4CW-17664-00	C- 3	4HC-23141-10	C- 11	4HC-2477F-00	C- 14		
4HC-12114-00	B- 4	4HC-14103-00	B- 11	4KL-14958-00	B- 11	4HC-17670-00	C- 3	4HC-23144-10	C- 11	4HC-24773-00-P0	C- 15		
4GO-12116-01	B- 4	4HC-14105-00	B- 11	4HC-15100-00	B- 14	4HC-17684-00	C- 3	4HC-23145-10	C- 11	4HC-24773-00-P1	C- 15		
4GO-12117-00	B- 4	4UD-14105-00	B- 11	36Y-15189-00	B- 15	4HC-21110-01	C- 6	22W-23146-L0	C- 11	4HC-24773-00-3H	C- 15		
4GO-12118-00	B- 4	4HC-14196-00	B- 12	4HC-15316-00	B- 15	4HC-21176-00	C- 6	22W-23153-L0	C- 11	4HC-24773-00-4B	C- 15		
5HO-12119-00	B- 4	4HC-14197-00	B- 12	4HC-15326-00	B- 15	4HC-21398-00	C- 15	509-23158-L0	C- 11	4HC-2478A-10	D- 10		
5HO-12121-00	B- 4	4KL-14243-00	B- 11	4HC-15335-00	B- 15	4HC-21420-00	C- 6	4HC-23170-10	C- 11	4HC-2478E-00	C- 15		
5HO-12146-00	B- 4	4HC-14286-00	B- 12	4HC-15337-00	B- 15	4HC-21480-00	C- 6	4HC-23173-10	C- 11	4HC-2478G-00	C- 15		
36X-12151-00	B- 4	4HC-14294-00	B- 10	4HC-15338-00	B- 15	4HC-21511-00-P0	C- 7	278-23181-50	C- 11	4JP-24780-02	C- 15		
3Y1-12156-00	B- 4	4UC-14301-01	B- 11	30X-15351-00	B- 9	4HC-21511-00-P1	C- 7	36Z-23183-00	C- 11	4HC-24790-A0	C- 14		
4HC-12157-00	B- 5	4UD-14301-01	B- 11	2T4-15363-00	B- 14	4HC-21511-00-3H	C- 7	4HC-23184-10	C- 11	4HC-25168-00-WN	D- 2		
2NX-12159-00	B- 4	4JP-14323-00	B- 11	4HC-15363-00	B- 15	4HC-21511-00-4B	C- 7	4HC-23340-10	C- 11	4HC-25190-00	D- 2		
4HC-12170-00	B- 5	4HC-14340-00	B- 12	4HC-15378-00	B- 14	1A8-21518-00	C- 7	4GY-23389-00	C- 6	4HC-25326-00	D- 4		
4HC-12176-00	B- 5	4UC-14341-00	B- 12	4HC-15407-00	B- 15	3VP-21535-00	D- 10	22F-23411-01	C- 11	4HC-2533A-00	D- 4		
2UJ-12210-01	B- 5	4UC-14341-10	B- 12	4HC-15411-00	B- 15	4HC-21552-00	C- 7	22F-23412-01	C- 11	4HC-25338-00-WN	D- 4		
3DM-12213-00	B- 5	38V-14342-22	B- 12	4HC-15417-01	B- 15	4HC-21629-00	C- 15	3VP-23416-00	C- 12	4HC-25351-00	D- 4		
4HC-12231-00	B- 5	50M-14343-65	B- 12	4HC-15421-00	B- 14	35R-21708-31	D- 8	3YF-23418-00	C- 12	148-25353-00	D- 4		
4HC-12241-00	B- 5	50M-14355-00	B- 12	4HC-15431-00	B- 15		D- 10	4H7-23441-00-98	C- 12	4HC-25355-00	D- 4		

NUMERICAL INDEX

PART NO.	GRID NO.	PART NO.	GRID NO.	PART NO.	GRID NO.	PART NO.	GRID NO.	PART NO.	GRID NO.	PART NO.	GRID NO.
148-25359-00	D- 4	4HC-27475-00	D- 9	4UC-82501-00	E- 5	8G9-84314-00	E- 2	90153-06029	B- 2	90183-05042	D- 10
2UJ-25381-00	D- 2	4HC-27481-00	D- 8	4UC-82552-00	E- 5	4UC-84320-00	E- 2	90154-06014	C- 7		D- 10
29L-25398-00	D- 2	4HC-27483-00	D- 8	4HC-82560-00	B- 8	4UC-84320-10	E- 2	90157-04088	C- 3		D- 11
29L-25398-10	D- 2	4HC-27484-00	D- 9	4UC-82560-00	B- 8	4SV-84347-00	E- 2	90157-05079	E- 5		D- 11
29L-25398-20	D- 2	4HC-27485-00	D- 8	3LD-82566-50	E- 5	4SV-84397-00	E- 2	90159-03102	D- 15		E- 3
4HM-2580U-00	D- 3	4HC-28100-00	C- 15	4UC-82590-00	E- 5	4HC-84545-00	E- 3	90159-05028	D- 6	90185-10110	D- 8
4HC-2582T-00	D- 3	3TB-28217-00	C- 6	341-82594-00	E- 5	4HC-84704-00	E- 3	90159-06093	B- 7	90185-10154	C- 6
4HC-25844-00	D- 7	4HC-28300-00	D- 10	4HC-82911-00	E- 4	4HC-84710-00	E- 3	90163-05006	D- 8	90185-12072	C- 6
2KF-25850-00	D- 7	4HC-28315-00	D- 11	33G-82913-01	E- 4	31L-84714-00	E- 3		D- 11	90185-14163	D- 4
2KF-25852-01	D- 7	4HC-28345-00-7B	D- 11	3XW-83310-10	D- 14	4HC-84721-00	E- 3	90167-04021	D- 15	90185-14166	D- 2
55U-25854-00	D- 7	1NL-28347-01	D- 11	2AE-83311-00	E- 3	4HC-84735-00	E- 3	90167-05025	C- 8	90201-04789	C- 3
56A-25867-00	D- 7	4HC-28351-01-P0	D- 10	3XW-83312-00	D- 14	4HC-84743-00	E- 3		C- 8	90201-06008	D- 10
4HC-25872-00	D- 7	4HC-28351-01-P1	D- 10	3XW-83313-00	D- 14	4HC-84744-00	E- 3		C- 8	90201-06055	D- 9
4HC-25875-00	C- 12	4HC-28351-01-3H	D- 10		D- 14	4AG-85111-00	C- 9		C- 8	90201-064J1	C- 15
4HC-25876-00	D- 7	4HC-28351-01-4B	D- 10	4HC-83313-00	E- 3		D- 11		C- 8	90201-08512	B- 6
4BP-25919-00	D- 3	4HC-28351-10-P0	D- 10	3XW-83320-10	D- 14	3Y6-85130-02	E- 3		C- 8		B- 9
3YX-25929-00	D- 3	4HC-28351-10-P1	D- 10	3XW-83322-00	D- 14	4HC-85750-00	D- 15		C- 8	90201-08609	B- 2
3YX-25937-00	D- 3	4HC-28351-10-3H	D- 10	32H-83331-00	D- 14	4HC-85752-00	E- 6		C- 14	90201-10118	D- 7
5R2-25937-00	D- 3	4HC-28351-10-4B	D- 10		D- 14	5G3-85753-00	E- 6		D- 5	90201-105A2	C- 6
4HC-26110-01	D- 5	4HC-28356-01	C- 6	4HC-83332-00	E- 3	90101-06291	D- 4		D- 6		C- 10
4HC-26144-00	D- 5	4HC-2836K-00	D- 10	4HC-83342-00	E- 3	90101-10303	B- 5		D- 8	90201-10591	B- 5
4HC-26230-00	D- 5	4HC-2836L-00	D- 11	4HC-83343-00	E- 3	90105-05361	C- 6		D- 9	90201-12166	C- 2
4FM-26240-00	D- 5	4HC-2836T-00	D- 10	3GM-83350-01	E- 6	90105-10638	D- 3		D- 10	90201-144M8	C- 3
4FM-26241-01	D- 5	4HC-28365-00	D- 10	3TB-83371-01	E- 6	90105-10716	C- 6		D- 10	90201-156R4	C- 5
33M-26246-00	D- 5	4HC-2837G-00	D- 15	4HC-83500-00	D- 15	90105-10747	B- 13		D- 11	90201-160F6	B- 3
3TB-26280-00	D- 5	4HC-2837U-00	D- 11	4HC-83500-21	D- 15	90109-060F3	C- 7		D- 11	90201-16242	B- 14
3TB-26290-00	D- 5	4HC-28371-11	D- 10	4HC-83509-00	D- 15	90109-063F1	C- 7		D- 11	90201-220J8	D- 4
4HC-26311-00	D- 5	4EJ-28376-00	D- 11	4HC-83510-00	D- 15		D- 11	90170-06010	E- 4	90201-232K5	C- 5
4HC-26312-00	D- 5	4HC-28385-11	D- 11	4HC-83510-21	D- 15	90109-063F5	C- 14	90170-06128	B- 4	90202-26142	C- 11
4HC-26351-00	D- 5	4HC-81410-00	D- 12	4HC-83511-00	D- 15	90109-06577	E- 4	90170-16182	B- 3	90206-10036	C- 14
4HC-26376-00	D- 5	4HC-81450-00	D- 12	1YT-83517-00	D- 15	90109-066A7	E- 5	90170-20386	C- 12	90206-14093	D- 4
4HC-2637H-00	D- 5	4HC-81800-00	D- 13	4R0-83517-00	D- 15	90109-067E6	B- 10	90170-36279	C- 4	90215-06184	B- 5
36X-26372-10	E- 4	4HC-81815-00	D- 13	3SX-8352K-00	D- 15		B- 10	90176-06055	D- 9	90240-05047	C- 14
5HD-26393-00	D- 5	3WP-81826-00	D- 13	4HC-8353H-00	D- 15	90109-06799	E- 4	90176-08026	B- 2	90249-12008	D- 5
4HC-27111-00	D- 8	3KS-81840-00	D- 13	4HC-83550-00	D- 15	90109-083G4	D- 3	90179-05523	D- 10	90269-07076	C- 14
4HC-27112-00	D- 8	11H-81844-00	D- 13	4HC-83590-00	D- 15	90109-10473	D- 8	90179-06411	D- 5		C- 15
58K-27112-02	D- 8	1FK-81847-00	D- 13	11H-83591-00	E- 6	90110-06200	C- 14	90179-08148	E- 4	90280-03017	C- 12
4HC-27114-00	D- 8	4FL-81940-00	E- 5	4HC-83612-00	D- 15	90116-08591	B- 14	90179-14469	C- 3	90280-05013	B- 3
4HC-27311-00	D- 8	4HC-81950-00	E- 5	4HC-83740-00	D- 15	90119-05071	E- 6		C- 3	90338-08174	B- 10
4HC-27314-00	C- 6	4HM-81960-01	E- 5	3RN-83912-00	E- 4	90119-06018	C- 8	90179-25615	C- 11	90338-11125	C- 15
4HC-27415-00	D- 8	4UC-82100-01	E- 5	3RN-83922-00	E- 4	90119-06044	C- 8	90183-05042	C- 8	90387-06473	B- 15
4UC-27433-00	D- 9	4HC-82115-00	E- 5	4UC-83963-00	E- 4	90119-06060	D- 8		C- 8	90387-064W3	B- 10
4UC-27434-00	D- 8	4HC-82116-00	E- 5	4HC-83964-00	D- 15		D- 11		C- 8	90387-066R8	C- 14
4UC-27444-00	D- 9	2GH-82151-00	E- 5	4HC-83965-00	E- 4	90119-06118	B- 8		C- 14	90387-0700D	E- 3
4HC-27452-01	C- 6	7LY-82151-00	E- 5	4HC-83972-01	E- 4	90119-06191	C- 15		D- 6	90387-07390	B- 8
4HC-27453-00	D- 8	4HC-82305-00	E- 6	4FU-83980-00	E- 4	90123-08046	E- 4		D- 6	90387-1006J	B- 14
4HC-27462-01	C- 6	4HC-82310-00	E- 6	4HC-83980-00	E- 4	90149-06131	E- 4		D- 8	90387-1409E	D- 4
4HC-27463-00	D- 9	4BP-82370-00	E- 6	4UC-84312-00	E- 2	90150-05024	D- 11		D- 10	90387-1508E	D- 2

NUMERICAL INDEX

PART NO.	GRID NO.	PART NO.	GRID NO.	PART NO.	GRID NO.	PART NO.	GRID NO.	PART NO.	GRID NO.	PART NO.	GRID NO.
90387-151R0	D- 2	90501-10312	E- 4	93210-16275	B- 6	95027-08040	C- 11	97707-50016	D- 8		
90387-153N8	C- 10	90501-106J4	B- 7		B- 14	95607-06100	E- 4		D- 10		
90387-15423	C- 10	90501-165J7	D- 5	93210-16325	B- 15		E- 4		D- 11		
90387-1906E	C- 3	90501-18576	B- 9	93210-19123	B- 15	95617-08200	B- 13		D- 14		
90401-10159	D- 7	90501-505J6	C- 3	93210-33133	B- 6	95617-08620	B- 2		D- 15		
90430-06014	B- 2	90506-18224	D- 8	93210-35520	B- 9	95707-05600	E- 3	97707-50125	B- 10		
	B- 6	90506-20158	D- 8	93210-35537	B- 10	95707-06500	B- 10	97801-05010	B- 11		
90430-08119	B- 14	90506-26225	D- 8	93210-43713	C- 3		C- 9	98501-04012	B- 11		
90445-092E8	C- 13	90506-40175	D- 8	93210-57634	B- 2		C- 15	98507-05008	D- 5		
90445-135J8	B- 14	90507-20002	D- 4	93210-82448	B- 2		D- 11	98507-05010	C- 15		
90446-11303	B- 10	91317-05012	D- 12	93211-17733	C- 3	95707-08500	C- 6	98507-05012	C- 13		
90460-15126	D- 5	91317-05025	D- 12	93306-00006	B- 6		C- 14	98507-05016	E- 6		
90460-27219	B- 7	91317-06014	B- 5	93306-00518	B- 5	95707-10500	D- 4	98507-05020	E- 4		
90460-56105	B- 10		B- 14	93306-20204	B- 5	95807-06010	C- 6	98507-05035	E- 4		
90461-15100	C- 13	91317-06016	B- 6	93306-20532	C- 5		C- 6	98507-05040	E- 4		
90462-08128	B- 7	91317-06020	B- 2	93306-27205	C- 5		E- 6	98507-05045	E- 4		
90464-05141	E- 4		B- 2	93306-30201	C- 5	95807-06012	C- 6	98507-06020	B- 15		
90464-13073	E- 5		B- 7		C- 10		C- 6		E- 6		
90464-13103	B- 7	91317-06025	D- 7	93306-30202	D- 2		C- 12	98507-06025	E- 5		
	B- 10	91317-06035	B- 6	93306-30302	C- 5	95807-06014	E- 3	98706-04012	D- 7		
90464-15195	D- 5	91317-08016	C- 2	93311-41566	C- 5	95807-06020	C- 15	98901-04006	B- 11		
	D- 5	91317-08030	C- 12	93399-99942	C- 11		D- 7	99001-04600	D- 8		
	E- 5	92017-06012	B- 13	93430-12008	D- 8		E- 2	99001-06600	B- 9		
90464-20044	D- 5		B- 13	93440-10085	B- 2	95807-08016	C- 6	99001-07600	B- 6		
90464-23199	D- 5	92017-06025	B- 9	93503-16003	C- 11	95817-06020	C- 15	99001-08600	C- 3		
90467-08003	C- 9	92902-05100	E- 3	93603-12221	B- 9	95817-06025	D- 13	99009-10400	B- 6		
90467-09006	B- 10	92907-05600	C- 13	93603-22028	B- 6	95817-08016	B- 14	99009-12400	C- 2		
	C- 13		E- 4		B- 9	95817-10020	B- 13	99009-16400	B- 14		
	C- 13		E- 6	93603-50195	C- 14	95817-10045	C- 6	99009-25400	C- 5		
90467-10008	B- 10	92907-06200	B- 13	93604-10011	B- 5	95817-12120	C- 6	99236-00080	C- 8		
	B- 10		B- 13	93900-00022	D- 2	95827-06012	C- 13	99237-00080	C- 8		
	C- 9	92907-06600	E- 5	93900-00025	D- 4	95827-08030	C- 10	99510-10114	B- 2		
	B- 7		E- 6	94111-1205A	D- 2	95827-08045	C- 10	99530-10114	B- 14		
90467-10035	C- 13	93101-10090	B- 6	94113-1207P	D- 4	95827-10035	C- 10		B- 14		
90467-12053	C- 13	93101-14092	B- 15	94581-63104	B- 5	97007-05012	B- 7		B- 15		
	B- 2	93101-28139	C- 3	94701-00333	B- 2	97007-06012	B- 5		B- 15		
90467-13064	B- 7	93102-22014	D- 2	95024-06010	B- 7		D- 10	99530-14016	B- 2		
90467-22097	B- 7	93102-25299	C- 5	95027-06008	E- 5	97702-40116	E- 3				
90467-23177	B- 7	93102-30284	B- 14	95027-06010	D- 5	97706-40116	E- 3				
90467-26131	B- 7	93102-32298	C- 5	95027-06012	C- 13	97707-04108	C- 14				
90468-02078	C- 13	93104-41115	C- 3		C- 13	97707-30512	D- 15				
90468-12007	C- 14		C- 3		D- 5	97707-40014	D- 15				
90468-12069	B- 3	93106-26005	C- 10	95027-06030	B- 15	97707-40016	D- 15				
90468-18121	C- 15	93109-28043	C- 10	95027-06040	B- 15	97707-40120	D- 14				
90480-01288	C- 8	93210-05187	C- 14		B- 15		D- 14				
90480-13018	C- 13	93210-09165	B- 4	95027-06070	B- 14		D- 14				
90480-13598	B- 10	93210-09729	D- 4	95027-06100	B- 14	97707-40512	D- 10				
90480-16301	B- 8	93210-14104	B- 14	95027-06120	B- 2	97707-50016	D- 5				
90480-18276	B- 7	93210-15171	B- 5	95027-08040	B- 14		D- 8				

*COPYRIGHT: All rights reserved. No part of this publication
may be reproduced without permission.*

YAMAHA

YAMAHA MOTOR CO., LTD.

2500 SHINGA I IWATA SHIZUOKA JAPAN
SERVICE INFORMATION DIV.

PRINTED ON RECYCLED PAPER

Printed in Japan
First edition DEC.,1996