

CONTENTS

ENGINE

CYLINDER	B2
CRANKSHAFT, PISTON	B3
VALVE	B4
CAMSHAFT, CHAIN	B5
WATER PUMP	B6
RADIATOR, HOSE	B7
OIL PUMP	B9
INTAKE	B10
CARBURETOR	B11
EXHAUST	B13
CRANKCASE	B14
CRANKCASE COVER 1	B15
STARTER	C2
CLUTCH	C3
TRANSMISSION	C5

CHASSIS

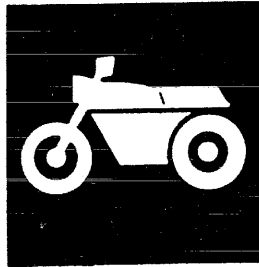
FRAME	C6
FENDER	C7
SIDE COVER	C8
REAR ARM, SUSPENSION	C10
STEERING	C11
FUEL TANK	C13
SEAT	C14
FRONT WHEEL	D3
FRONT WHEEL 2	D4
FRONT BRAKE CALIPER	D5
REAR WHEEL	D6
REAR BRAKE CALIPER	D7
STEERING HANDLE, CABLE	D8
FRONT MASTER CYLINDER	D9
FRONT MASTER CYLINDER 2	D11

STAND, FOOTREST	D13
LEG SHIELD	D15
GENERATOR	E3
STARTING MOTOR	E4
FLASHER LIGHT	E5
METER	E6
METER 2	E7
HEADLIGHT	E8
TAILLIGHT	E9
HANDLE SWITCH, LEVER	E10
ELECTRICAL 1	E11
ELECTRICAL 2	E13
ELECTRICAL 3	E14

INDEX

NUMERICAL INDEX	M1
-----------------------	----

YAMAHA



**PARTS
CATALOGUE**

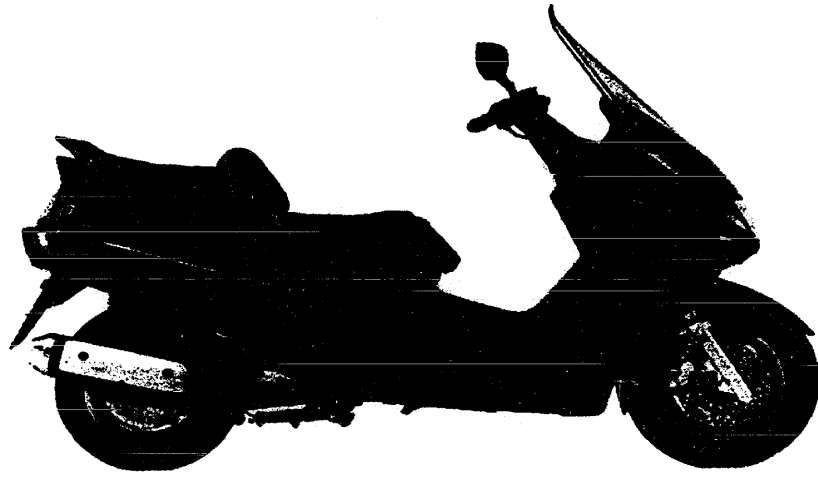
YP250A'99 (5DF3/5DF4)

YP250D'99 (5DF5/5DF6) EUROPE

295DF-300E2

YAMAHA
GENUINE
Parts & Accessories

A2



A3

FOREWORD

This Parts Catalogue is related to the parts for the model(s) in the below frame. When you are ordering replacement parts, please refer to this Parts Catalogue and quote both part numbers and part names correctly.

YP250A'99/YP250D'99(5DF3/5DF4/5DF5/5DF6)

1. Modifications or additions which have been made after issue of the Parts Catalogue will be announced in the Yamaha Parts News. It is advisable that you make necessary corrections to the Parts Catalogue according to the Yamaha Parts News.

2. Abbreviations
The Following abbreviations are used in this Parts Catalogue.

"UR" Use specified parts number.
 "UN" Use as many as needed.
 "AP" Alternate Parts
 "LM" Local Made (Parts need to be ordered locally)
 "F#" Frame No. (Applicable machine No.)

3. Parts, which are to be supplied in an assembly, are listed with a dot(.) in front of the part name as shown below.

EXAMPLE

CARBURETOR ASSY
 .JET, PILOT
 .NOZZLE, MAIN

4. Number of component for assembly
The numeral appearing to the right of each component part indicates the quantity of parts for each assembly unit.

EXAMPLE

PART NO.	DESCRIPTION	Q'TY	REMARKS
2F5-83310-60	FRONT FLASHER LIGHT ASSY	2	
115-83311-60	.BULB (6V-18W)	1	
1M1-83309-60	.REFLECTOR	1	

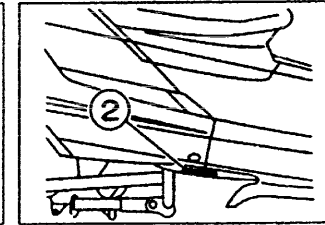
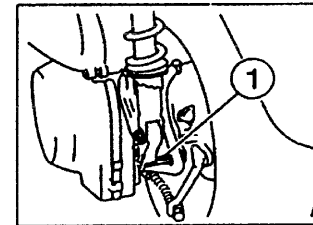
5. Applicable colors of graphics are represented in the "REMARKS" as shown below.

PART NO.	DESCRIPTION	Q'TY	REMARKS
2N4-24110-00-X5	.FUEL TANK COMP.	2	MXR
3J1-24240-10	.GRAPHIC, FUEL TANK	1	for MXR

6. Applicable Serial No.

① Engine Serial No.

② Frame Serial No.

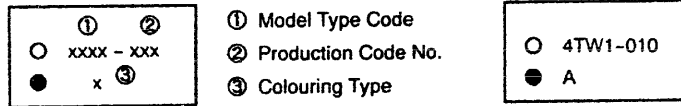


7. Note that the illustrations for reference in finding parts numbers, not to be used for assembling. When assembling, please use the applicable service manual.
8. The asterisk (*) before a reference number indicates modification items after the first edition.

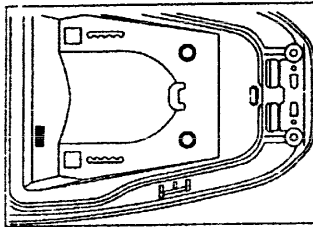
MODEL LABEL

(1) A label called "Model Label" is affixed in the location as indicated in (3) below.
When using this parts catalogue, please be sure to cross-refer the "model code - production code No." in the catalogue to the "model code - production code No." indicated on the Model Label affixed onto the product concerned.

(2) "Model Label" Indication



(3) Model Label Affixing Location



(4) Model Code - Production Code Number of Model Listed in This Parts Catalog

Model Code	Production Code No.	Country (destination)	Model Code	Production Code No.	Country (destination)
5DF3	020	BELGIUM	5DF5	100	PORTUGAL
	050	ENGLAND		110	SWEDEN
	060	GREECE	5DF6	010	SWITZERLAND
	070	ITALY			
	080	HOLLAND			
	090	NORWAY			
	100	PORTUGAL			
110	SWEDEN				
5DF4	010	SWITZERLAND			
5DF5	020	BELGIUM			
	050	ENGLAND			
	060	GREECE			
	070	ITALY			
	080	HOLLAND			
	090	NORWAY			

(5) Colouring Information

Model Code	Colouring type code	Colour code	Colour Name	Abbreviation
5DF3/4	A	004B	BLACK 2	BL2
5DF5/6	A	0627	VERY DARK BLUE COCKTAIL 4	VDBC4
	B	0266	VERY DARK BLUE METALLIC 3	VDBM3
	C	0676	LIGHT GREENISH GRAY METALLIC 6	LGNM6
	D	0697	LIGHT GREENISH YELLOW SOLID 2	LGYS2

CONTENTS

ENGINE

CYLINDER	B2
CRANKSHAFT, PISTON	B3
VALVE	B4
CAMSHAFT, CHAIN	B5
WATER PUMP	B6
RADIATOR, HOSE	B7
OIL PUMP	B9
INTAKE	B10
CARBURETOR	B11
EXHAUST	B13
CRANKCASE	B14
CRANKCASE COVER 1	B15
STARTER	C2
CLUTCH	C3
TRANSMISSION	C5

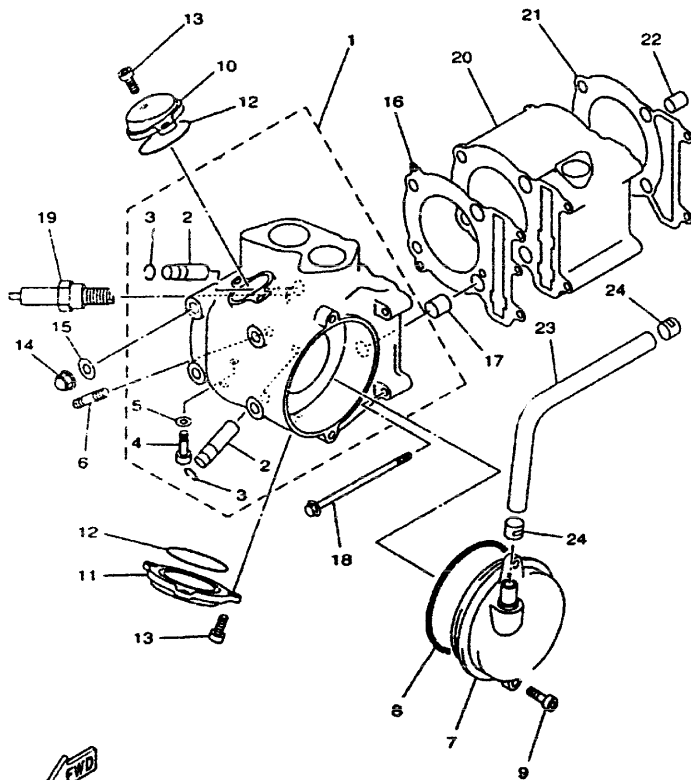
CHASSIS

FRAME	C6
FENDER	C7
SIDE COVER	C8
REAR ARM, SUSPENSION	C10
STEERING	C11
FUEL TANK	C13
SEAT	C14
FRONT WHEEL	D3
FRONT WHEEL 2	D4
FRONT BRAKE CALIPER	D5
REAR WHEEL	D6
REAR BRAKE CALIPER	D7
STEERING HANDLE, CABLE	D8
FRONT MASTER CYLINDER	D9
FRONT MASTER CYLINDER 2	D11

STAND, FOOTREST	D13
LEG SHIELD	D15
GENERATOR	E3
STARTING MOTOR	E4
FLASHER LIGHT	E5
METER	E6
METER 2	E7
HEADLIGHT	E8
TAILLIGHT	E9
HANDLE SWITCH, LEVER	E10
ELECTRICAL 1	E11
ELECTRICAL 2	E13
ELECTRICAL 3	E14

INDEX

NUMERICAL INDEX	M1
-----------------------	----

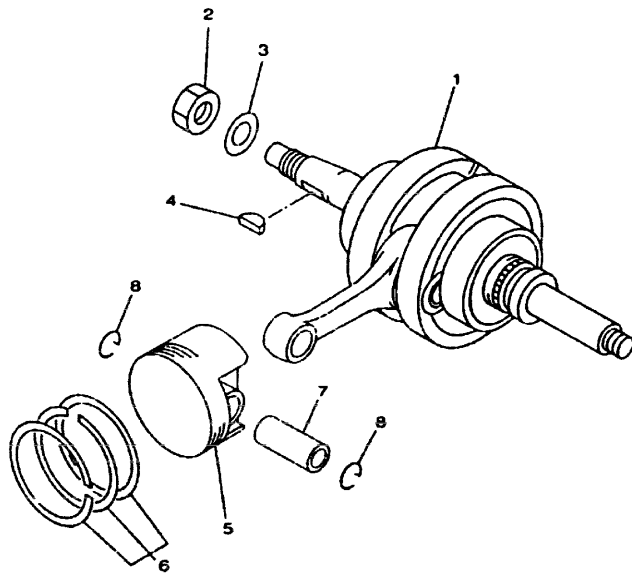


FWD
4HC1010-5010

FIG. 1 CYLINDER

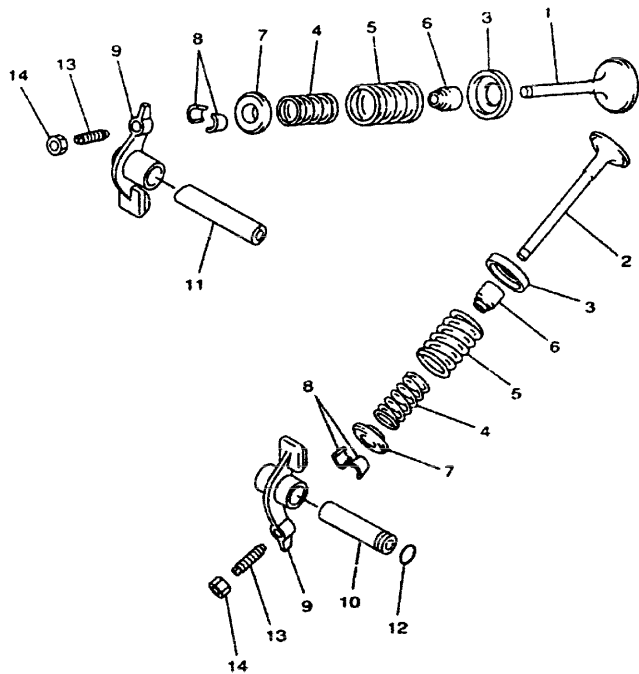
REF. NO.	PART NO.	DESCRIPTION	SDF3	SDF4	SDF5	SDF6	REMARKS
1	4HC-11101-00	CYLINDER HEAD ASSY	1	1	1	1	
2	4G0-11133-10	.GUIDE, INTAKE VALVE	2	2	2	2	
3	93440-10085	.CIRCLIP	2	2	2	2	
4	90153-06029	.SCREW, HEXAGON	1	1	1	1	
5	90430-06014	.GASKET	1	1	1	1	
6	95617-08620	BOLT, STUD	2	2	2	2	
7	4HC-11160-00	BREATHER ASSY	1	1	1	1	
8	93210-92448	O-RING	1	1	1	1	
9	91317-06020	BOLT	2	2	2	2	
10	3GC-11186-00	COVER, CYLINDER HEAD SIDE 2	1	1	1	1	
11	3GC-11187-00	COVER, CYLINDER HEAD SIDE 3	1	1	1	1	
12	93210-57634	O-RING	2	2	2	2	
13	91317-06020	BOLT	5	5	5	5	
14	90176-08026	NUT, CROWN	4	4	4	4	
15	90201-08609	WASHER, PLATE	4	4	4	4	
16	4HC-11181-00	GASKET, CYLINDER HEAD 1	1	1	1	1	
17	99530-14016	PIN, DOWEL	2	2	2	2	
18	95027-06120	BOLT, FLANGE	2	2	2	2	
19	94701-00333	PLUG, SPARK (NGK DR8EA)	1	1	1	1	
20	4HC-11311-00	CYLINDER 1	1	1	1	1	
21	4HC-11351-00	GASKET, CYLINDER	1	1	1	1	
22	99510-10114	PIN, DOWEL	2	2	2	2	
23	4HC-11166-00	PIPE, BREATHER 1	1	1	1	1	
24	90467-13064	CLIP	2	2	2	2	

FIG. 2 CRANKSHAFT, PISTON



4HC1010-5020

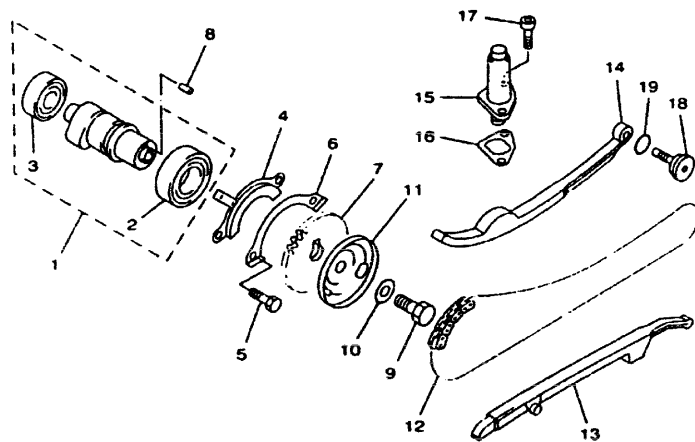
REF. NO.	PART NO.	DESCRIPTION	SDF3	SDF4	SDF5	SDF6	REMARKS
1	4HC-11400-00	CRANKSHAFT ASSY	1	1	1	1	
2	90170-16425	NUT	1	1	1	1	
3	90201-160F6	WASHER, PLATE	1	1	1	1	
4	90280-05013	KEY, WOODRUFF	1	1	1	1	
5	4HC-11631-00-97	PISTON (STD)	1	1	1	1	
	4HC-11636-00	PISTON (0.50MM O/S)	1	1	1	1	AP
	4HC-11638-00	PISTON (1.00MM O/S)	1	1	1	1	AP
6	4HC-11603-00	PISTON RING SET (STD)	1	1	1	1	
	4HC-11605-00	PISTON RING SET (0.50MM O/S)	1	1	1	1	AP
	4HC-11607-00	PISTON RING SET (1.00MM O/S)	1	1	1	1	AP
7	4JH-11633-00	PIN, PISTON	1	1	1	1	
8	90468-12069	CLIP	2	2	2	2	




4HC1010-5030

FIG. 3 VALVE

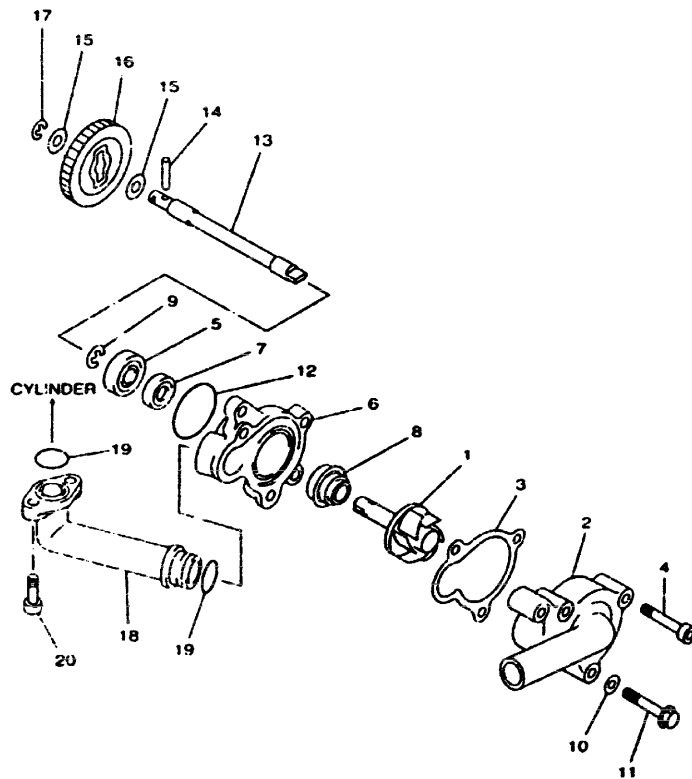
REF. NO.	PART NO.	DESCRIPTION	SDF3	SDF4	SDF5	SDF6	REMARKS
1	5H0-12111-01	VALVE, INTAKE	1	1	1	1	
2	5H0-12121-01	VALVE, EXHAUST	1	1	1	1	
3	4G0-12116-01	SEAT, VALVE SPRING	2	2	2	2	
4	4HC-12113-00	SPRING, VALVE INNER	2	2	2	2	
5	4HC-12114-00	SPRING, VALVE OUTER	2	2	2	2	
6	5H0-12119-00	SEAL, VALVE STEM	2	2	2	2	
7	4G0-12117-00	RETAINER, VALVE SPRING	2	2	2	2	
8	4G0-12118-00	COTTER, VALVE	4	4	4	4	
9	36X-12151-00	ARM, VALVE ROCKER	2	2	2	2	
10	3Y1-12156-00	SHAFT, ROCKER 2	1	1	1	1	
11	5H0-12146-00	SHAFT, ROCKER	1	1	1	1	
12	93210-09165	O-RING	1	1	1	1	
13	2NX-12159-00	SCREW, VALVE ADJUSTING	2	2	2	2	
14	90170-06128	NUT	2	2	2	2	




 4HC1010-5040

FIG. 4 CAMSHAFT. CHAIN

REF. NO.	PART NO.	DESCRIPTION	SDF3	SDF4	SDF5	SDF6	REMARKS
1	4HC-12170-00	CAMSHAFT ASSY 1	1	1	1	1	
2	93306-00518	.BEARING	1	1	1	1	
3	93306-20204	.BEARING (B6202Z)	1	1	1	1	
4	4GA-1111F-00	PLATE	1	1	1	1	
5	97007-06012	BOLT	2	2	2	2	
6	90215-06184	WASHER, LOCK	1	1	1	1	
7	4HC-12176-00	SPROCKET, CAM CHAIN	1	1	1	1	
8	93804-10011	PIN, DOWEL	1	1	1	1	
9	90101-10303	BOLT	1	1	1	1	
10	90201-10591	WASHER, PLATE	1	1	1	1	
11	4KB-11145-00	PLATE, BREATHER 2	1	1	1	1	
12	94581-63104	CHAIN	1	1	1	1	
13	4HC-12231-00	GUIDE, STOPPER 1	1	1	1	1	
14	4HC-12241-00	GUIDE, STOPPER 2	1	1	1	1	
15	2UJ-12210-01	TENSIONER ASSY, CAM CHAIN	1	1	1	1	
16	4RF-12213-00	GASKET, TENSIONER CASE	1	1	1	1	
17	91317-06014	BOLT	2	2	2	2	
18	4HC-12157-00	BOLT	1	1	1	1	
19	93210-15171	O-RING	1	1	1	1	




 4UC3300-6050

FIG. 5 WATER PUMP

REF. NO.	PART NO.	DESCRIPTION	SDF3	SDF4	SDF5	SDF6	REMARKS
1	5CG-12450-00	IMPELLER SHAFT ASSY	1	1	1	1	
2	4HC-12422-01	COVER, HOUSING	1	1	1	1	
3	4HC-12428-10	GASKET, HOUSING COVER 2	1	1	1	1	
4	91317-06035	BOLT	2	2	2	2	
5	93306-00006	BEARING (B6000)	1	1	1	1	
6	4HC-12421-00	HOUSING, WATER PUMP	1	1	1	1	
7	93101-10090	OIL SEAL	1	1	1	1	
8	11H-12438-00	SEAL, MECHANICAL	1	1	1	1	
9	99009-10400	CIRCLIP	1	1	1	1	
10	90430-06014	GASKET	1	1	1	1	
11	95027-06035	BOLT, FLANGE	1	1	1	1	
12	93210-33133	O-RING	1	1	1	1	
13	4HC-12426-00	SHAFT	1	1	1	1	
14	93603-22028	PIN, DOWEL	1	1	1	1	
15	90201-08512	WASHER, PLATE	2	2	2	2	
16	4HC-12459-00	GEAR, IMPELLER SHAFT	1	1	1	1	
17	99001-07800	CIRCLIP	1	1	1	1	
18	4HC-12446-00	JOINT	1	1	1	1	
19	93210-16275	O-RING	2	2	2	2	
20	91317-06016	BOLT	2	2	2	2	

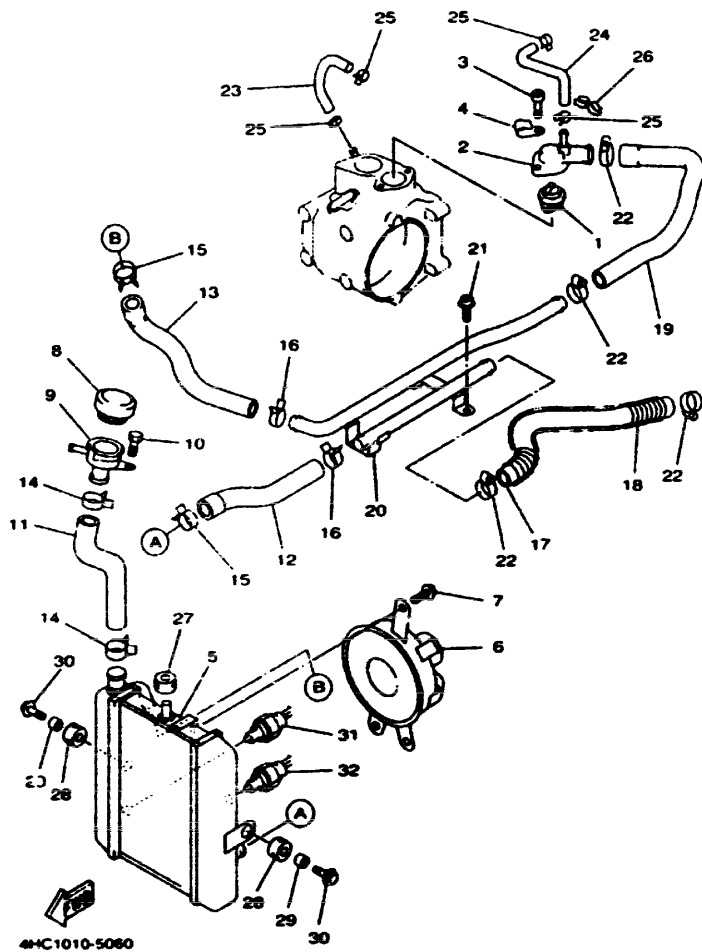


FIG. 6 RADIATOR HOSE

REF. NO.	PART NO.	DESCRIPTION					REMARKS
			SDF 3	SDF 4	SDF 5	SDF 6	
1	4HC-12411-00	THERMOSTAT	1	1	1	1	
2	4HC-12413-00	COVER, THERMOSTAT	1	1	1	1	
3	91317-06020	BOLT	2	2	2	2	
4	90462-08128	CLAMP	1	1	1	1	
5	4UC-12461-00	RADIATOR ASSY	1	1	1	1	
6	4HC-12405-01	BLOWER ASSY	1	1	1	1	
7	95024-06010	BOLT, FLANGE	3	3	3	3	
8	4HC-12462-00	CAP, RADIATOR	1	1	1	1	
9	4HC-12591-00	SUPT, FILLER NECK	1	1	1	1	
10	97007-05012	BOLT	1	1	1	1	
11	4HC-12481-00	PIPE 1	1	1	1	1	
12	4HC-12482-00	PIPE 2	1	1	1	1	
13	4HC-12483-00	PIPE 3	1	1	1	1	
14	90467-26131	CLIP	2	2	2	2	
15	90467-23177	CLIP	2	2	2	2	
16	90467-22100	CLIP	2	2	2	2	
17	4HC-12484-00	PIPE 4	1	1	1	1	
18	90501-106J4	SPRING, COMPRESSION	1	1	1	1	
19	4HC-12485-00	PIPE 5	1	1	1	1	
20	4HC-12476-00	PIPE 6	1	1	1	1	
21	90159-06093	SCREW, WITH WASHER	2	2	2	2	
22	90460-27219	CLAMP, HOSE	4	4	4	4	
23	4HC-12576-00	HOSE 1	1	1	1	1	
24	4HC-12577-00	HOSE 2	1	1	1	1	
25	90467-10035	CLIP	4	4	4	4	
26	90464-13103	CLAMP	1	1	1	1	
27	90460-18276	GROMMET	1	1	1	1	

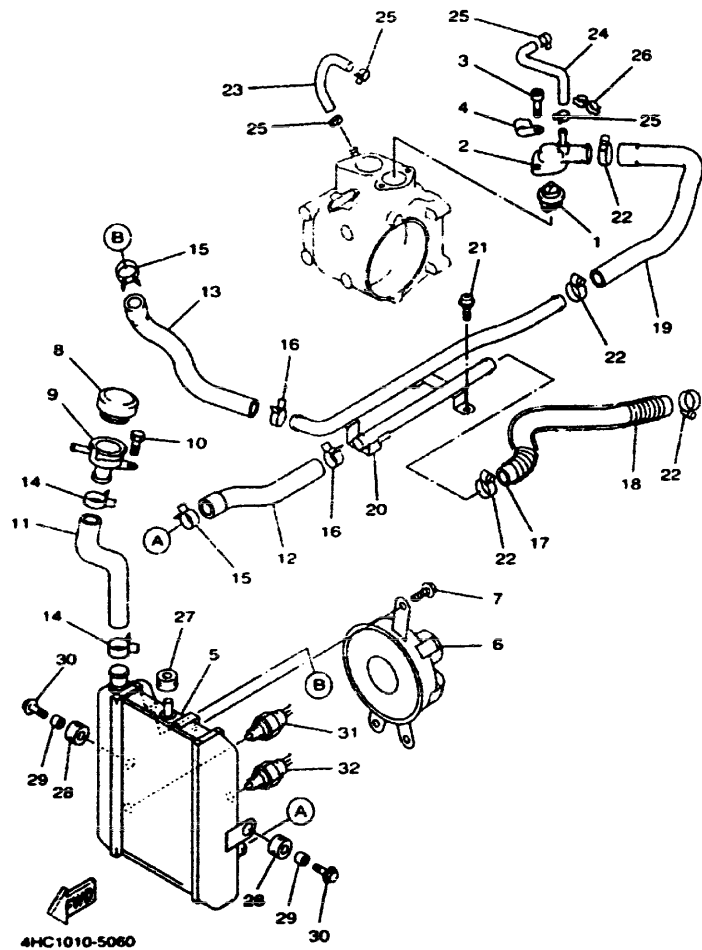
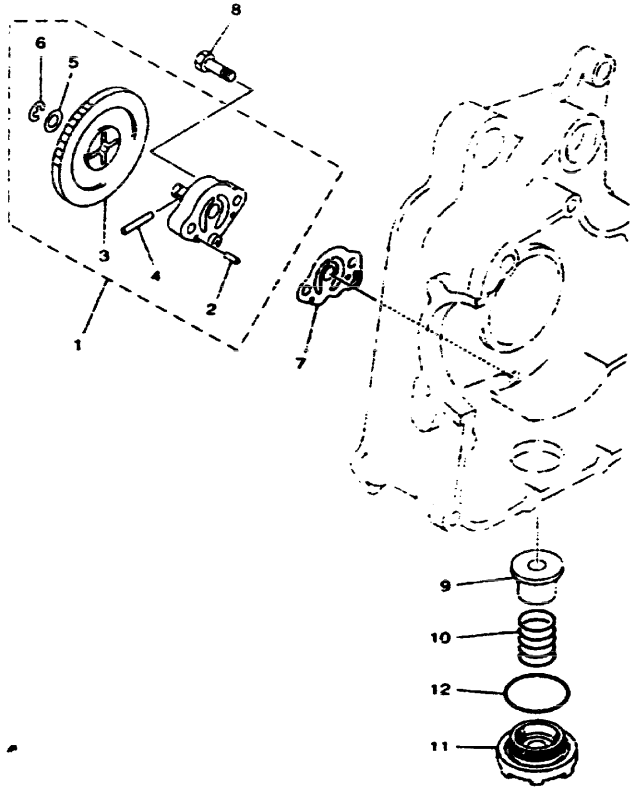


FIG. 6 RADIATOR HOSE

REF. NO.	PART NO.	DESCRIPTION	PDF3	PDF4	PDF5	PDF6	REMARKS
28	90480-16301	GROMMET	2	2	2	2	
29	90387-0714B	COLLAR	2	2	2	2	
30	90119-06118	BOLT, WITH WASHER	2	2	2	2	
31	4UC-82560-00	THERMO SWITCH ASSY	1	1	1	1	
32	4HC-82560-00	THERMO SWITCH ASSY	1	1	1	1	




 4UC3300-8070

FIG. 7 OIL PUMP

REF. NO.	PART NO.	DESCRIPTION	SDF3	SDF4	SDF5	SDF6	REMARKS
1	4HC-13300-00	OIL PUMP ASSY	1	1	1	1	
2	93803-12221	PIN, DOWEL	2	2	2	2	
3	4HC-13325-00	GEAR, PUMP DRIVEN	1	1	1	1	
4	93803-22028	PIN, DOWEL	1	1	1	1	
5	90201-08512	WASHER, PLATE	1	1	1	1	
6	98001-08800	CIRCLIP	1	1	1	1	
7	4HC-13475-00	GASKET	1	1	1	1	
8	92017-08025	BOLT, BUTTON HEAD	2	2	2	2	
9	51Y-13411-00	STRAINER, OIL	1	1	1	1	
10	90501-18576	SPRING, COMPRESSION	1	1	1	1	
11	4HC-15351-00	PLUG, DRAIN	1	1	1	1	
12	93210-35520	C-RING	1	1	1	1	

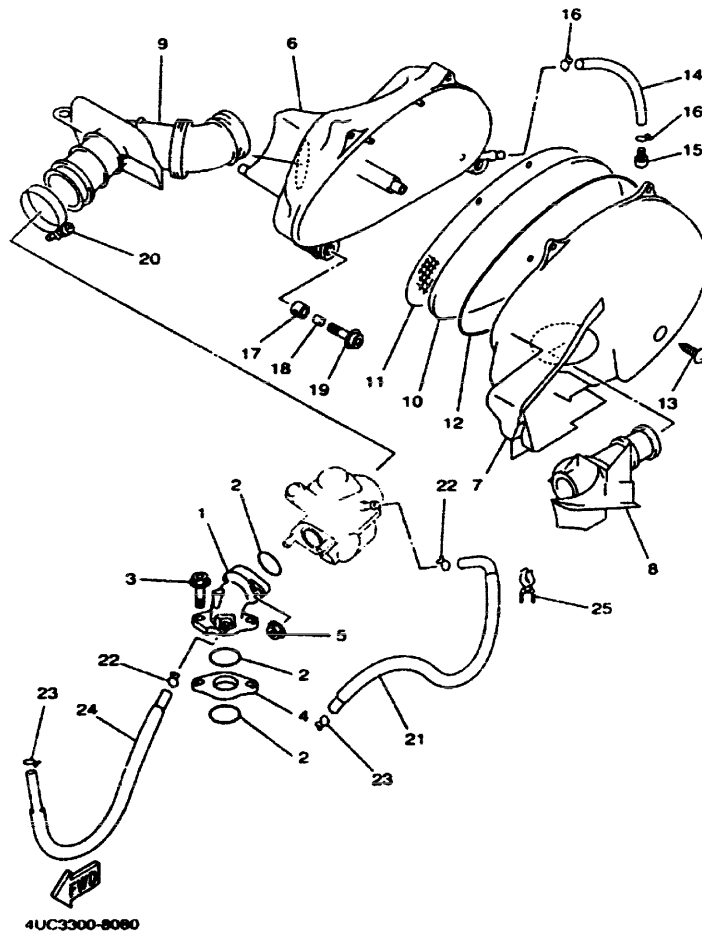


FIG. 8 INTAKE

REF. NO.	PART NO.	DESCRIPTION	SDF3	SDF4	SDF5	SDF6	REMARKS
1	4HC-13586-10	JOINT, CARBURETOR 1	1	1	1	1	
2	93210-35537	O-RING	3	3	3	3	
3	90109-067E6	BOLT	2	2	2	2	
4	4HC-13595-00	JOINT	1	1	1	1	
5	95707-06500	NUT, FLANGE	2	2	2	2	
6	4HC-14411-00	CASE, AIR CLEANER 1	1	1	1	1	
7	4HC-14412-00	CAP, CLEANER CASE 1	1	1	1	1	
8	4HC-14437-00	DUCT	1	1	1	1	
9	4HC-14453-00	JOINT, AIR CLEANER 1	1	1	1	1	
10	4HC-14451-00	ELEMENT, AIR CLEANER	1	1	1	1	
11	4HC-14472-00	PLATE, ELEMENT	1	1	1	1	
12	4HC-14452-00	SEAL	1	1	1	1	
13	97707-50125	SCREW, TAPPING	5	5	5	5	
14	90446-11303	HOSE	1	1	1	1	
15	90338-08174	PLUG	1	1	1	1	
16	90467-10008	CLIP	2	2	2	2	
17	90480-13598	GROMMET	2	2	2	2	
18	90387-064W3	COLLAR	2	2	2	2	
19	90109-067E6	BOLT	2	2	2	2	
20	90460-56105	CLAMP, HOSE	1	1	1	1	
21	4HC-14284-00	HOSE	1	1	1	1	
22	90467-09006	CLIP	2	2	2	2	
23	90467-10008	CLIP	2	2	2	2	
24	4HC-13929-10	PIPE, IMPULSE	1	1	1	1	
25	90464-13103	CLAMP	1	1	1	1	

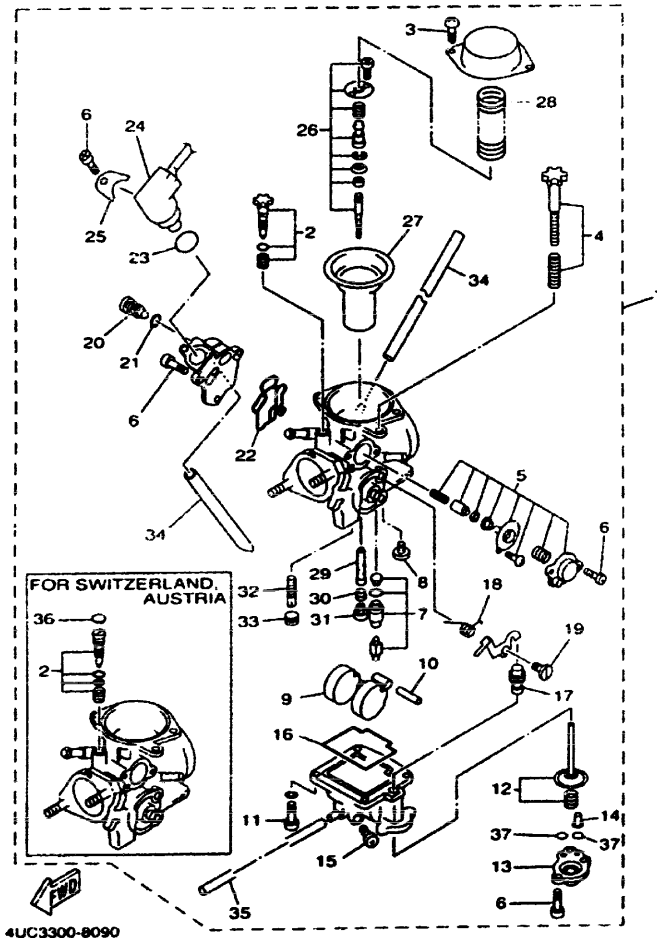


FIG. 9 CARBURETOR

REF. NO.	PART NO.	DESCRIPTION	SDF3	SDF4	SDF5	SDF6	REMARKS
1	4UC-14301-03	CARBURETOR ASSY 1	1		1		
	4UD-14301-03	CARBURETOR ASSY 1		1		1	
2	4HC-14105-00	PILOT SCREW SET	1	1	1		
	4UD-14105-00	PILOT SCREW SET		1		1	
3	97801-05010	SCREW, PAN HEAD	4	4	4	4	
4	4HC-14103-00	THROTTLE SCREW SET	1	1	1	1	
5	4HC-1490A-00	DIAPHRAGM SET, 1	1	1	1	1	
6	214-24535-00	SCREW, LEVER FITTING	9	9	9	9	
7	4HC-14390-01	NEEDLE VALVE ASSY	1	1	1	1	
8	98901-04006	SCREW, BIND	1	1	1	1	
9	25N-14385-00	FLOAT	1	1	1	1	
10	4KL-14386-00	PIN, FLOAT	1	1	1	1	
11	98501-04012	SCREW, PAN HEAD	4	4	4	4	
12	4HC-1490H-01	DIAPHRAGM SET 5	1	1	1	1	
13	4HC-14958-00	COVER, DIAPHRAGM	1	1	1	1	
14	4KL-14958-01	CHECK VALVE ASSY	1	1	1	1	
15	4JP-14323-00	SCREW, AIR ADJUSTING	1	1	1	1	
16	4KL-14384-00	GASKET, FLOAT CHAMBER	1	1	1	1	
17	4KL-14404-00	DUST CUP COMP.	1	1	1	1	
18	4HC-14555-00	SPRING	1	1	1	1	
19	4HC-14429-00	SCREW	1	1	1	1	
20	4HC-14592-00	SCREW	1	1	1	1	
21	5H0-14397-00	O-RING	1	1	1	1	
22	4KL-14536-00	GASKET	1	1	1	1	
23	4KL-14397-00	O-RING	1	1	1	1	
24	4UC-1410A-00	STARTER SET	1	1	1	1	
25	4JP-14243-00	PLATE	1	1	1	1	

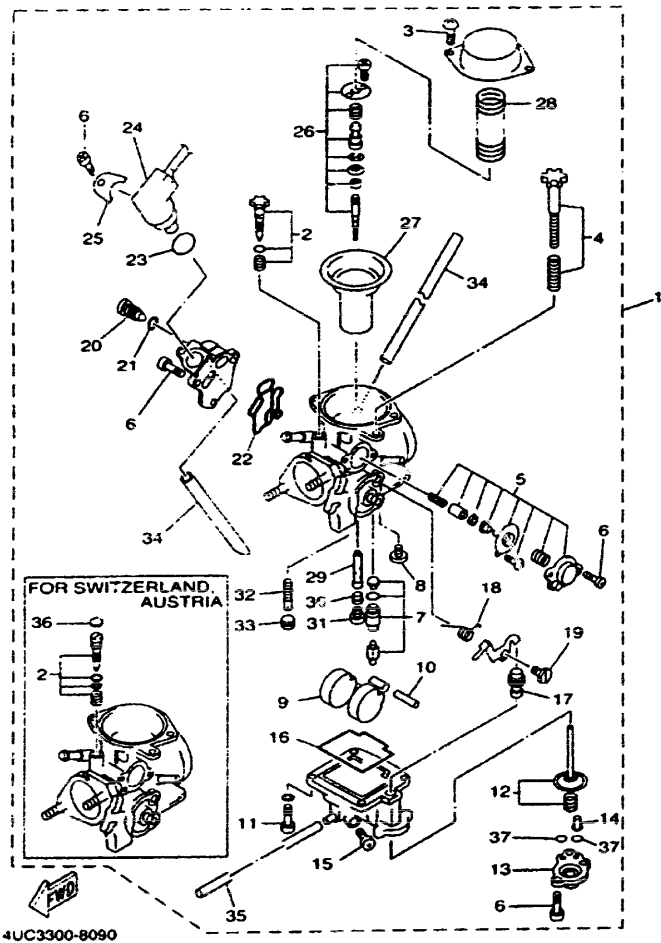


FIG. 9 CARBURETOR

REF. NO.	PART NO.	DESCRIPTION	SDF3	SDF4	SDF5	SDF6	REMARKS
26	4UC-1490J-00	NEEDLE SET	1	1	1	1	
27	4HC-14340-00	VALVE ASSY	1	1	1	1	
28	4HC-14286-00	SPRING	1	1	1	1	
29	4UC-14341-00	NOZZLE, MAIN	1	1	1	1	
30	4UC-14341-10	NOZZLE, MAIN	1	1	1	1	
31	50M-14343-65	JET, MAIN (#130)	1	1	1	1	
32	38V-14342-22	JET, PILOT (# 44)	1	1	1	1	
33	50M-14355-00	PLUG	1	1	1	1	
34	4HC-14197-00	PIPE	2	2	2	2	
35	4HC-14196-00	PIPE	1	1	1	1	
36	2WJ-14367-00	PLUG		1		1	
37	4HC-14397-00	O-RING	2	2	2	2	

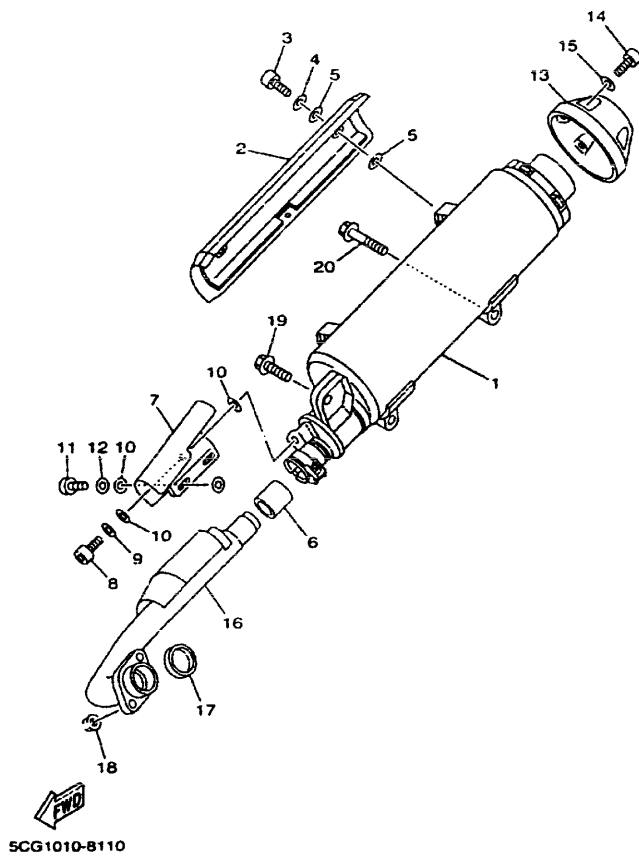
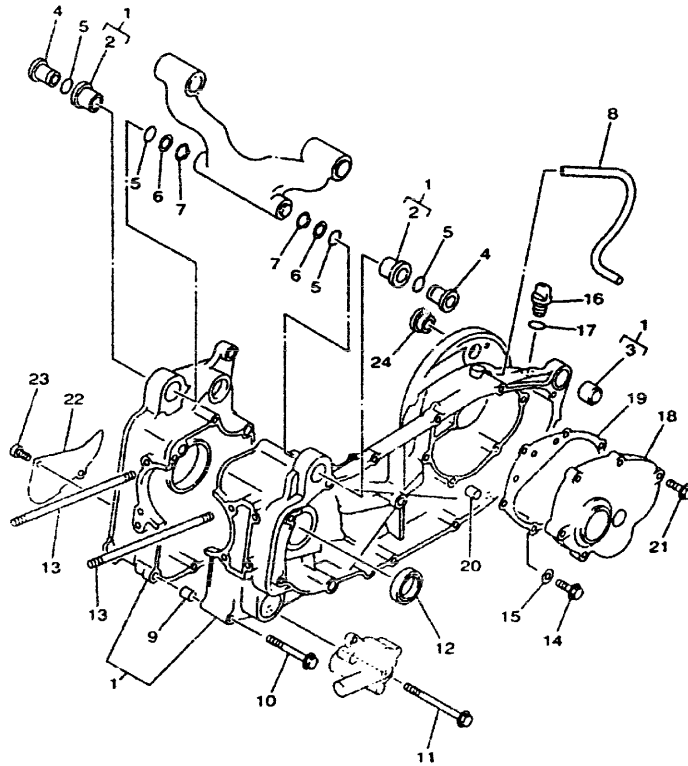


FIG. 10 EXHAUST

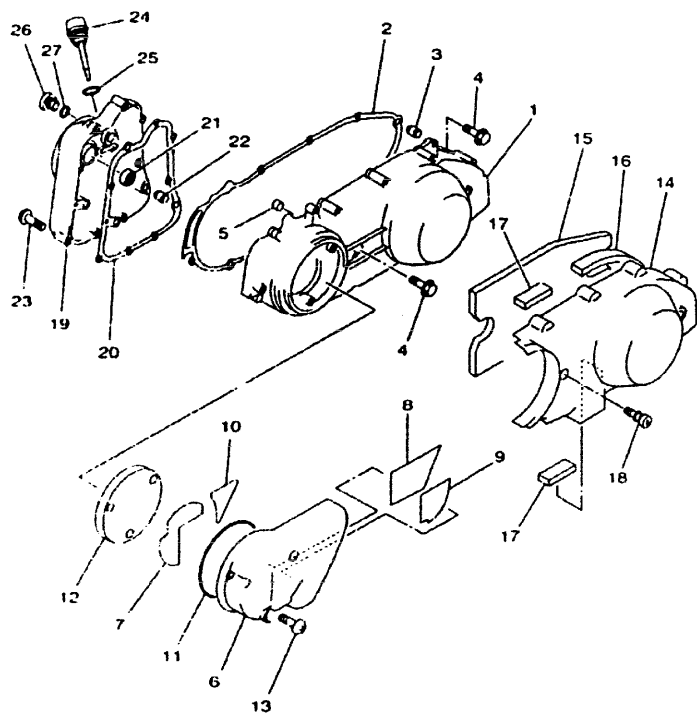
REF. NO.	PART NO.	DESCRIPTION	SDF3	SDF4	SDF5	SDF6	REMARKS
1	5CG-14711-01	MUFFLER 1	1	1	1	1	
2	5CG-14708-00	PROTECTOR ASSY	1	1	1	1	
3	91380-06014	BOLT	3	3	3	3	
4	92990-06200	WASHER, PLAIN	3	3	3	3	
5	4BD-14766-00	WASHER, PROTECTOR	6	6	6	6	
6	4BH-14714-00	GASKET, MUFFLER	1	1	1	1	
7	5CG-14738-00	PROTECTOR, MUFFLER 3	1	1	1	1	
8	91380-06014	BOLT	1	1	1	1	
9	90201-06055	WASHER, PLATE	1	1	1	1	
10	4KL-14766-00	WASHER, PROTECTOR	6	6	6	6	
11	95827-06014	BOLT, FLANGE	2	2	2	2	
12	90201-06055	WASHER, PLATE	2	2	2	2	
13	5CG-14799-00	CAP	1	1	1	1	
14	91380-06014	BOLT	5	5	5	5	
15	92990-06200	WASHER, PLAIN	5	5	5	5	
16	5DF-14610-00	EXHAUST PIPE ASSY 1	1	1	1	1	
17	3MT-14613-00	GASKET, EXHAUST PIPE	1	1	1	1	
18	90185-06169	NUT, SELF-LOCKING	2	2	2	2	
19	95817-10030	BOLT, FLANGE	1	1	1	1	
20	95817-10050	BOLT, FLANGE	2	2	2	2	



SDF3300-9110

FIG. 11 CRANKCASE

REF. NO.	PART NO.	DESCRIPTION	SDF				REMARKS
			3	4	5	6	
1	SCG-15100-10	CRANKCASE ASSY	1	1			
	SCG-15100-00	CRANKCASE ASSY			1	1	
2	4HC-15378-00	HOLDER	2	2	2	2	
3	164-22216-00	BUSH, REAR SHOCK ABSORBER	1	1	1	1	
4	90387-1006J	COLLAR	2	2	2	2	
5	93210-16275	O-RING	4	4	4	4	
6	90201-16242	WASHER, PLATE	2	2	2	2	
7	99009-16400	CIRCLIP	2	2	2	2	
8	90445-135J8	HOSE	1	1	1	1	
9	99530-10114	PIN, DOWEL	2	2	2	2	
10	95027-06070	BOLT, FLANGE	4	4	4	4	
11	95027-06100	BOLT, FLANGE	5	5	5	5	
12	93102-30284	OIL SEAL	1	1	1	1	
13	90116-08591	BOLT, STUD	4	4	4	4	
14	95817-08016	BOLT, FLANGE	1	1	1	1	
15	90430-08119	GASKET	1	1	1	1	
16	2T4-15363-00	PLUG, OIL	1	1		1	
17	93210-14104	O-RING	1	1	1	1	
18	4HC-15421-00	COVER, CRANKCASE 2	1	1	1	1	
19	4HC-15461-00	GASKET, CRANKCASE COVER 2	1	1	1	1	
20	99530-10114	PIN, DOWEL	2	2	2	2	
21	95027-08040	BOLT, FLANGE	6	6	6	6	
22	4HC-15492-00	COVER	1	1	1	1	
23	91317-06014	BOLT	2	2	2	2	
24	90387-1514G	COLLAR	1	1			



4UC1332-6120

FIG. 12 CRANKCASE COVER 1

REF. NO.	PART NO.	DESCRIPTION	SDF3	SDF4	SDF5	SDF6	REMARKS
1	4HC-15411-00	COVER, CRANKCASE 1	1	1	1	1	
2	4HC-15451-00	GASKET, CRANKCASE COVER 1	1	1	1	1	
3	99530-10114	PIN, DOWEL	2	2	2	2	
4	95027-06040	BOLT, FLANGE	11	11	11	11	
5	90387-064T3	COLLAR	1	1	1	1	
6	4HC-15471-00	DUCT, AIR	1	1	1	1	
7	4HC-15337-00	DAMPER 4	1	1	1	1	
8	4HC-15338-00	DAMPER, ENGINE MOUNT 5	1	1	1	1	
9	4HC-15491-00	PROTECTOR	1	1	1	1	
10	4HC-15499-00	PROTECTOR, COVER	1	1	1	1	
11	4HC-15472-00	SEAL, AIR DUCT	1	1	1	1	
12	4HC-15407-00	ELEMENT 1	1	1	1	1	
13	98507-06020	SCREW, PAN HEAD	3	3	3	3	
14	4HC-15431-00	COVER, CRANKCASE 3	1	1	1	1	
15	4HC-15316-00	DAMPER, ENGINE MOUNT 1	1	1	1	1	
16	4HC-15326-00	DAMPER, ENGINE MOUNT 2	1	1	1	1	
17	4HC-15335-00	DAMPER 3	2	2	2	2	
18	3KJ-15481-00	BOLT 1	2	2	2	2	
19	4HC-15417-01	COVER, CAP	1	1	1	1	
20	4HC-15453-00	GASKET, CARBURETOR COVER	1	1	1	1	
21	93101-14092	OIL SEAL (S7-14-25-5.5-1-HS)	1	1	1	1	
22	99530-10114	PIN, DOWEL	2	2	2	2	
23	95027-06040	BOLT, FLANGE	10	10	10	10	
24	4HC-15363-00	PLUG, OIL	1	1	1	1	
25	93210-19123	O-RING	1	1	1	1	
26	36Y-15189-00	PLUG	1	1	1	1	
27	93210-16325	O-RING	1	1	1	1	

CONTENTS

ENGINE

CYLINDER	B2
CRANKSHAFT, PISTON	B3
VALVE	B4
CAMSHAFT, CHAIN	B5
WATER PUMP	B6
RADIATOR, HOSE	B7
OIL PUMP	B9
INTAKE	B10
CARBURETOR	B11
EXHAUST	B13
CRANKCASE	B14
CRANKCASE COVER 1	B15
STARTER	C2
CLUTCH	C3
TRANSMISSION	C5

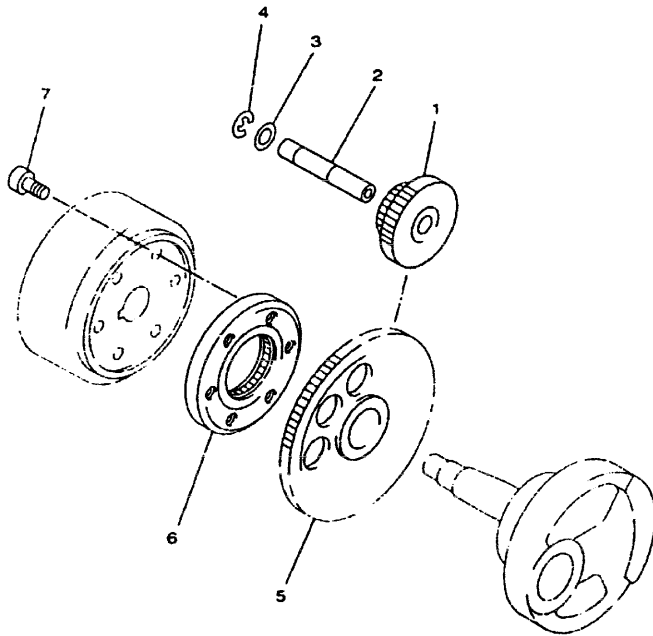
CHASSIS

FRAME	C6
FENDER	C7
SIDE COVER	C8
REAR ARM, SUSPENSION	C10
STEERING	C11
FUEL TANK	C13
SEAT	C14
FRONT WHEEL	D3
FRONT WHEEL 2	D4
FRONT BRAKE CALIPER	D5
REAR WHEEL	D6
REAR BRAKE CALIPER	D7
STEERING HANDLE, CABLE	D8
FRONT MASTER CYLINDER	D9
FRONT MASTER CYLINDER 2	D11

STAND, FOOTREST	D13
LEG SHIELD	D15
GENERATOR	E3
STARTING MOTOR	E4
FLASHER LIGHT	E5
METER	E6
METER 2	E7
HEADLIGHT	E8
TAILLIGHT	E9
HANDLE SWITCH, LEVER	E10
ELECTRICAL 1	E11
ELECTRICAL 2	E13
ELECTRICAL 3	E14

INDEX

NUMERICAL INDEX	M1
-----------------------	----




4HC1010-5130

FIG. 13 STARTER

REF. NO.	PART NO.	DESCRIPTION	SDF3	SDF4	SDF5	SDF6	REMARKS
1	4HC-15512-00	GEAR, IDLER 1	1	1	1	1	
2	2HT-15521-00	SHAFT 1	1	1	1	1	
3	90201-12166	WASHER, PLATE	1	1	1	1	
4	99009-12400	CIRCLIP	1	1	1	1	
5	4HC-15517-00	GEAR, IDLER 2	1	1	1	1	
6	4HC-15590-00	STARTER ONE-WAY ASSY	1	1	1	1	
7	91317-08016	BOLT	3	3	3	3	

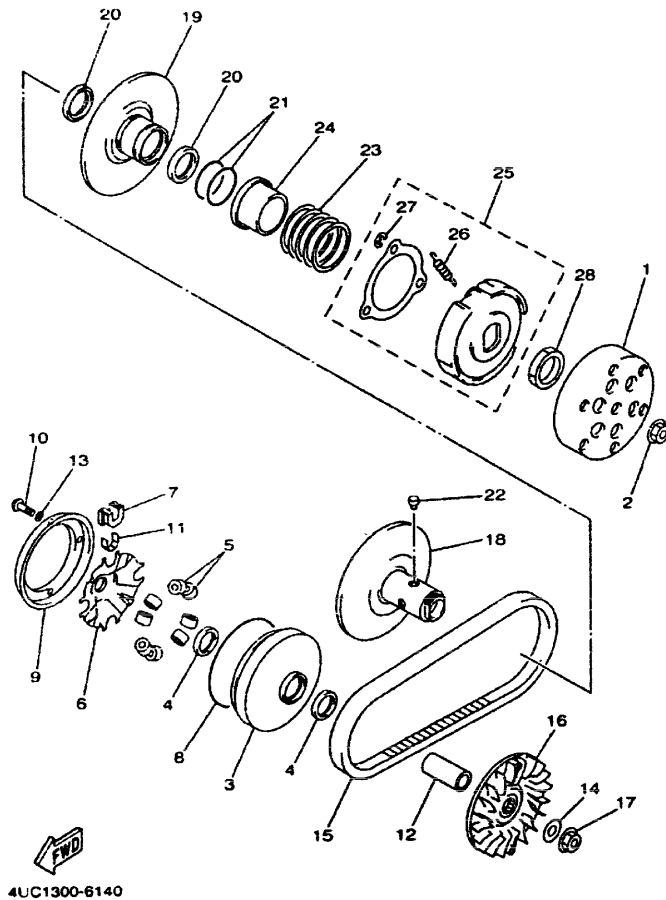
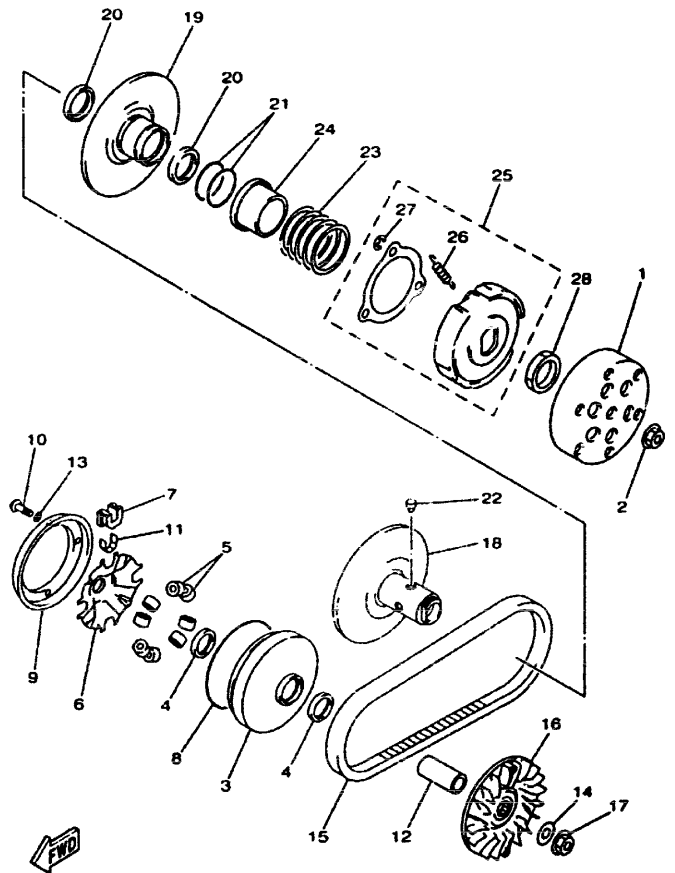


FIG. 14 CLUTCH

REF. NO.	PART NO.	DESCRIPTION	SDF3	SDF4	SDF5	SDF6	REMARKS
1	1XX-16611-03	CLUTCH HOUSING COMP.	1	1	1	1	
2	90179-14469	NUT	1	1	1	1	
3	5CG-17620-00	PRIMARY SLIDING SHEAVE COMP.	1	1	1	1	
4	93101-28139	OIL SEAL	2	2	2	2	
5	4UC-17632-00	WEIGHT	8	8	8	8	
6	4HC-17623-00	CAM	1	1	1	1	
7	4HC-17653-00	SLIDER	4	4	4	4	
8	93211-17733	O-RING	1	1	1	1	
9	5CG-17639-00	STOPPER	1	1	1	1	
10	90157-04088	SCREW, PAN HEAD	4	4	4	4	
11	4HC-17654-00	SPACER 1	4	4	4	4	
12	90387-1906E	COLLAR	1	1	1	1	
13	90201-047R9	WASHER, PLATE	4	4	4	4	
14	90201-144M8	WASHER, PLATE	1	1	1	1	
15	5CG-17641-00	V-BELT	1	1	1	1	
16	4HC-17611-00	SHEAVE, PRIMARY FIXED	1	1	1	1	
17	90179-14469	NUT	1	1	1	1	
18	4HC-17660-00	SECONDARY FIXED SHEAVE COMP.	1	1	1	1	
19	4HC-17670-10	SECONDARY SLIDING SHEAVE	1	1	1	1	
20	93104-41119	OIL SEAL	2	2	2	2	
21	93210-43713	O-RING	2	2	2	2	
22	4CW-17664-00	PIN, GUIDE	4	4	4	4	
23	90501-505J6	SPRING, COMPRESSION	1	1	1	1	
24	4HC-17684-00	SEAT, SECONDARY SPRING	1	1	1	1	
25	5CG-16620-00	CLUTCH CARRIER ASSY	1	1	1	1	
26	2YM-16626-00	SPRING, CLUTCH WEIGHT 1	3	3	3	3	
27	99001-08600	CIRCLIP	3	3	3	3	

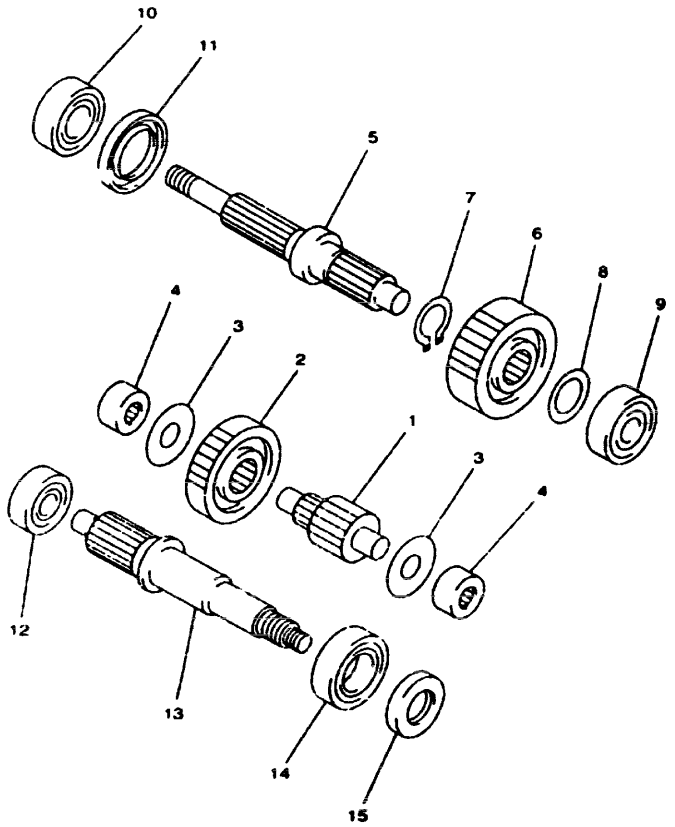


4UC1300-6140

FIG. 14 CLUTCH

REF. NO.	PART NO.	DESCRIPTION	SDF3	SDF4	SDF5	SDF6	REMARKS
28	90170-36279	NUT	1	1	1	1	

C4




 4HC1010-5150

FIG. 15 TRANSMISSION

REF. NO.	PART NO.	DESCRIPTION	SDF3	SDF4	SDF5	SDF6	REMARKS
1	5CG-17411-00	AXLE, MAIN	1	1	1	1	
2	4HC-16151-01	GEAR, PRIMARY DRIVEN	1	1	1	1	
3	90201-156R4	WASHER, PLATE	2	2	2	2	
4	93311-41566	BEARING	2	2	2	2	
5	5CG-17421-00	AXLE, DRIVE	1	1	1	1	
6	5CG-17211-00	GEAR, 1ST WHEEL	1	1	1	1	
7	99006-25400	CIRCLIP	1	1	1	1	
8	90201-232K5	WASHER, PLATE	1	1	1	1	
9	93306-30302	BEARING (B6303C3)	1	1	1	1	
10	93306-27205	BEARING	1	1	1	1	
11	93102-32296	OIL SEAL	1	1	1	1	
12	93306-30201	BEARING (B6302)	1	1	1	1	
13	4HC-16111-00	GEAR, PRIMARY DRIVE	1	1	1	1	
14	93306-20570	BEARING	1	1	1	1	
15	93102-25299	OIL SEAL	1	1	1	1	

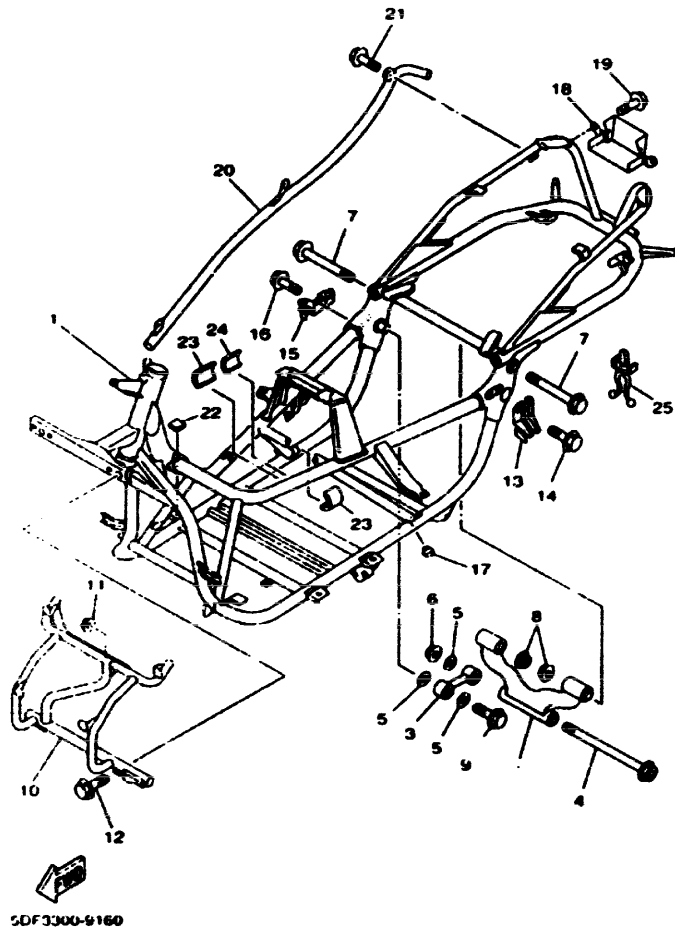


FIG. 16 FRAME

REF. NO.	PART NO.	DESCRIPTION	SDF3	SDF4	SDF5	SDF6	REMARKS
1	5CG-21110-A0	FRAME COMP.	1	1			
	5CG-21110-01	FRAME COMP.			1	1	
2	5CG-21420-00	ENGINE BRACKET COMP. 2	1	1	1	1	
3	4HC-21480-00	STAY, ENGINE	1	1	1	1	
4	90105-10716	BOLT, WASHER BASED	1	1	1	1	
5	90201-105A2	WASHER, PLATE	3	3	3	3	
6	90185-10154	NUT, SELF-LOCKING	1	1	1	1	
7	95817-12120	BOLT, FLANGE	2	2	2	2	
8	90185-12072	NUT, SELF-LOCKING	2	2	2	2	
9	95817-10045	BOLT, FLANGE	1	1	1	1	
10	4HC-28356-01	STAY 1	1	1	1	1	
11	95707-08500	NUT, FLANGE	1	1	1	1	
12	95807-08016	BOLT, FLANGE	2	2	2	2	
13	4HC-27452-01	BRACKET, FOOTREST 1	1	1	1	1	
14	95807-06012	BOLT, FLANGE	2	2	2	2	
15	4HC-27482-01	BRACKET, FOOTREST 2	1	1	1	1	
16	95807-06012	BOLT, FLANGE	2	2	2	2	
17	4HC-27314-00	STOPPER	1	1	1	1	
18	4HC-2476V-00	PROTECTOR, 2	1	1	1	1	
19	95807-08010	BOLT, FLANGE	2	2	2	2	
20	4HC-2117G-00	PROTECTOR	1	1	1	1	
21	95807-08010	BOLT, FLANGE	3	3	3	3	
22	3TB-28217-00	DAMPER 1	1	1	1	1	
23	11H-21747-00	DAMPER	2	2			
	11H-21747-00	DAMPER			1	1	
24	22F-2138X-00	DAMPER	1	1			
25	90464-07078	CLAMP	1	1			

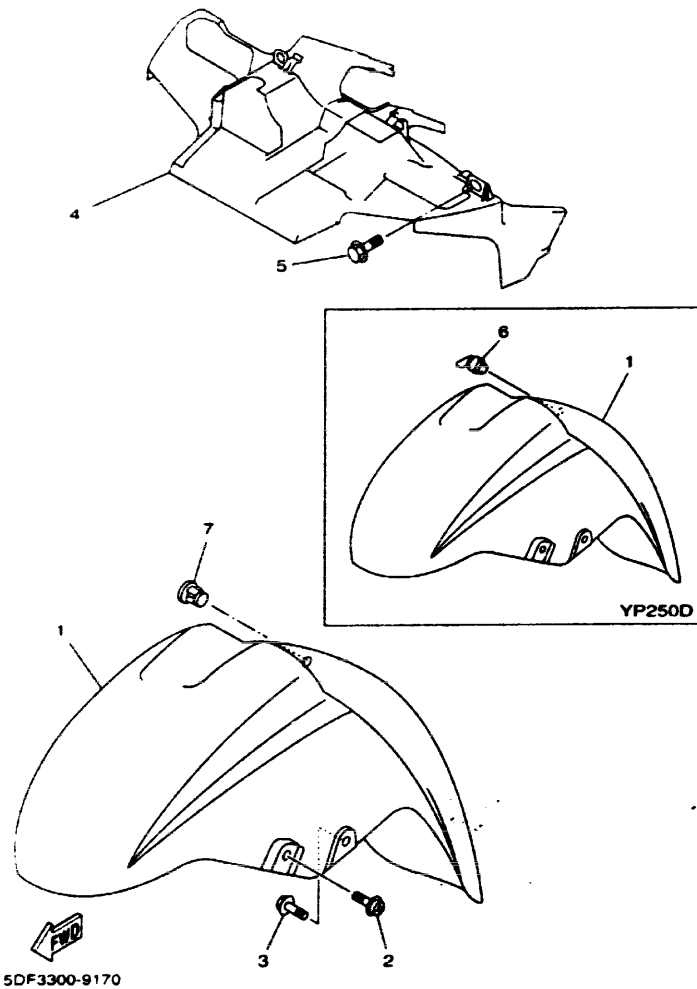


FIG. 17 FENDER

REF. NO.	PART NO.	DESCRIPTION	SDF3	SDF4	SDF5	SDF6	REMARKS
1	4HC-21511-00-4B	FENDER, FRONT	1	1			BL2
	4HC-21511-00-P5	FENDER, FRONT			1	1	VDBC4
	4HC-21511-00-P4	FENDER, FRONT			1	1	VDBM3
	4HC-21511-00-P8	FENDER, FRONT			1	1	LGNM6
*	4HC-21511-00-P9	FENDER, FRONT			1	1	LGYS2
2	90154-06014	SCREW, BINDING	2	2	2	2	
3	90109-060F3	BOLT	2	2	2	2	
4	4HC-21552-00	FENDER, INNER	1	1	1	1	
5	90109-063F1	BOLT	3	3	3	3	
6	1A8-21518-00	HOLDER, CABLE			1	1	
7	5CG-21279-00	PLUG, BLIND	1	1			

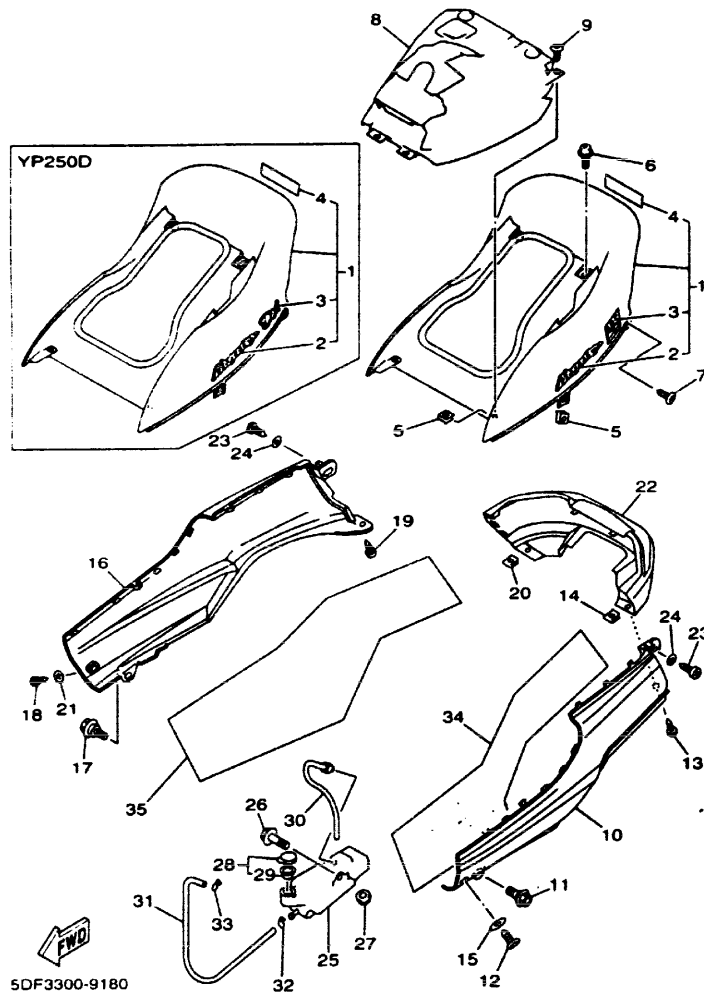


FIG. 18 SIDE COVER

REF. NO.	PART NO.	DESCRIPTION	SDF3	SDF4	SDF5	SDF6	REMARKS
1	4HC-Y2171-80-4B	COVER, SIDE 1	1	1			UR BL2
	4HC-Y2171-60-P5	COVER, SIDE 1			1	1	UR VDBC4
	4HC-Y2171-60-P4	COVER, SIDE 1			1	1	UR VDBM3
	4HC-Y2171-90-P8	COVER, SIDE 1			1	1	UR LGNM6
*	4HC-Y2171-A0-P9	COVER, SIDE 1			1	1	UR LGYS2
2	5CG-21781-00	EMBLEM 1	2	2	2	2	
3	5CG-2173B-00	EMBLEM	2	2			
	5DF-21782-00	EMBLEM 2			2	2	
4	99236-00080	EMBLEM, YAMAHA			1	1	UR FOR VDBC4, VDBM3
*	99237-00080	EMBLEM, YAMAHA	1	1	1	1	UR FOR BL2, LGNM6, LGYS2
5	90183-05042	NUT, SPRING	4	4	4	4	
6	90119-06060	BOLT, WITH WASHER	2	2	2	2	
7	90167-05079	SCREW, TAPPING	2	2	2	2	
8	4HC-21721-10	COVER, SIDE 2	1	1	1	1	
9	90167-05079	SCREW, TAPPING	2	2	2	2	
10	4HC-2171L-A0-9G	MOLE, SIDE COVER 1	1	1			FRS
	4HC-2171L-A0-P6	MOLE, SIDE COVER 1			1	1	VDBC4
	4HC-2171L-A0-P4	MOLE, SIDE COVER 1			1	1	VDBM3
	4HC-2171L-A0-P9	MOLE, SIDE COVER 1			1	1	LGNM6
*	4HC-2171L-A0-PA	MOLE, SIDE COVER 2			1	1	LNMB FOR LGYS2
11	90109-083F1	BOLT	1	1	1	1	
12	90167-05079	SCREW, TAPPING	1	1	1	1	
13	90167-05079	SCREW, TAPPING	1	1	1	1	
14	90183-05042	NUT, SPRING	1	1	1	1	
15	90209-05347	WASHER	1	1	1	1	
16	4HC-2171M-A0-9G	MOLE, SIDE COVER 2	1	1			FRS
	4HC-2171M-A0-P6	MOLE, SIDE COVER 2			1	1	VDBC4

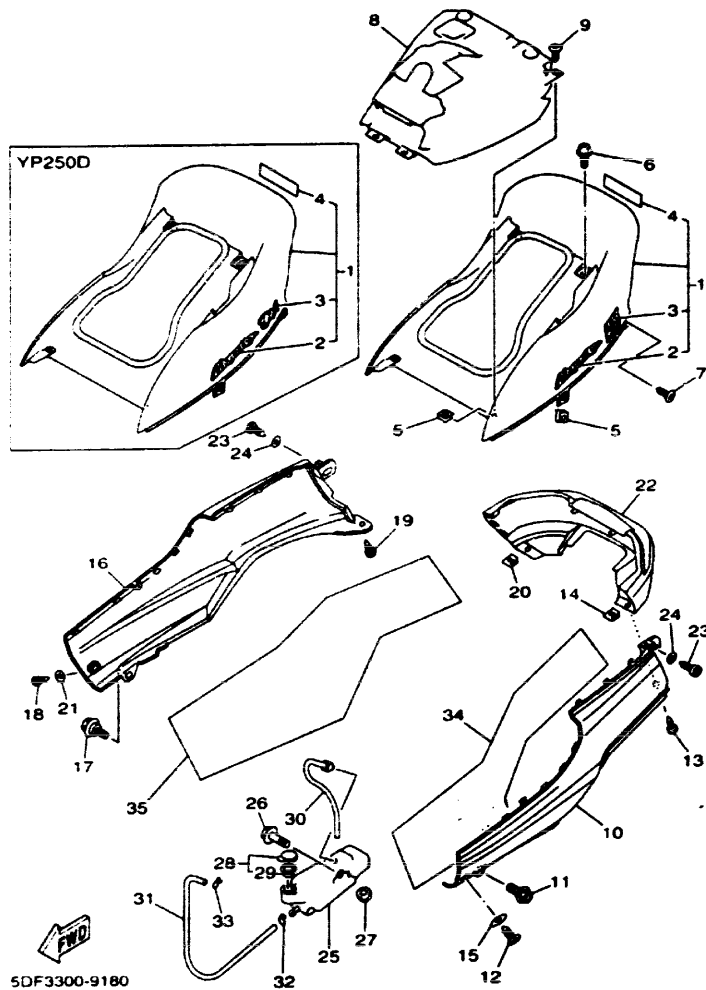
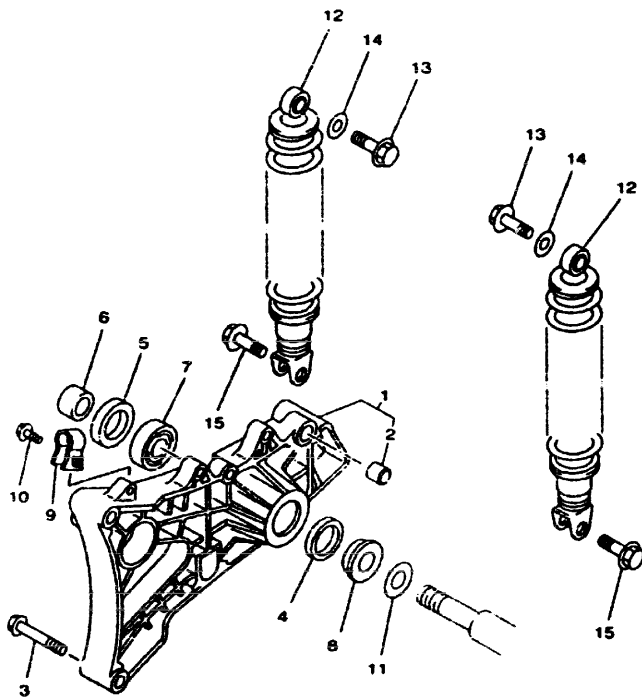


FIG. 18 SIDE COVER

REF. NO.	PART NO.	DESCRIPTION	SDF3	SDF4	SDF5	SDF6	REMARKS
16	4HC-2171M-A0-P4 MOLE, SIDE COVER 2				1	1	VDBM3
	4HC-2171M-A0-P9 MOLE, SIDE COVER 2				1	1	LGNM6
*	4HC-2171M-A0-PA MOLE, SIDE COVER 2				1	1	LNMB FOR LGYS2
17	90109-063F1	BOLT	1	1	1	1	
18	90167-05079	SCREW, TAPPING	1	1	1	1	
19	90167-05079	SCREW, TAPPING	1	1	1	1	
20	90183-05042	NUT, SPRING	1	1	1	1	
21	90209-05347	WASHER	1	1	1	1	
22	4HC-2171N-A0-9G MOLE, SIDE COVER 3		1	1			FRS
	4HC-2171N-A0-P6 MOLE, SIDE COVER 3				1	1	VDBC4
	4HC-2171N-A0-P4 MOLE, SIDE COVER 3				1	1	VDBM3
	4HC-2171N-A0-P9 MOLE, SIDE COVER 3				1	1	LGNM6
*	4HC-2171N-A0-PA MOLE, SIDE COVER 2				1	1	LNMB FOR LGYS2
23	90167-05079	SCREW, TAPPING	2	2	2	2	
24	90209-05347	WASHER	2	2	2	2	
25	4HC-21871-00	TANK, RECOVERY	1	1	1	1	
26	90119-08117	BOLT, WITH WASHER	1	1	1	1	
27	90480-01288	GROMMET	1	1	1	1	
28	1AA-21815-00	CAP	1	1	1	1	
29	1AA-21874-00	GASKET	1	1	1	1	
30	4HC-21816-00	PIPE 1	1	1	1	1	
31	4HC-21817-00	PIPE 2	1	1	1	1	
32	90487-08003	CLIP	1	1	1	1	
33	90487-10008	CLIP	1	1	1	1	
34	4HC-21778-01	DAMPER, LOCATING 1	1	1	1	1	
35	4HC-21779-01	DAMPER, LOCATING 2	1	1	1	1	




 SDF1332-8190

FIG. 19 REAR ARM. SUSPENSION

REF. NO.	PART NO.	DESCRIPTION	SDF3	SDF4	SDF5	SDF6	REMARKS
1	5CG-22100-00	REAR ARM ASSY	1	1	1	1	
2	164-22216-00	BUSH, REAR SHOCK ABSORBER	1	1	1	1	
3	95827-08070	BOLT, FLANGE	2	2	2	2	
4	93109-28043	OIL SEAL	1	1	1	1	
5	93106-26005	OIL SEAL	1	1	1	1	
6	90387-15423	COLLAR	1	1	1	1	
7	93306-30212	BEARING	1	1	1	1	
8	90387-153N8	COLLAR	1	1	1	1	
9	3EN-25875-01	HOLDER, BRAKE HOSE 1	1	1	1	1	
10	95807-06025	BOLT, FLANGE	1	1	1	1	
11	90201-150J4	WASHER, PLATE	1	1	1	1	
12	5CG-22210-00	SHOCK ABSORBER ASSY, REAR	2	2	2	2	
13	95827-10035	BOLT, FLANGE	2	2	2	2	
14	90201-105A2	WASHER, PLATE	2	2	2	2	
15	95827-08030	BOLT, FLANGE	2	2	2	2	

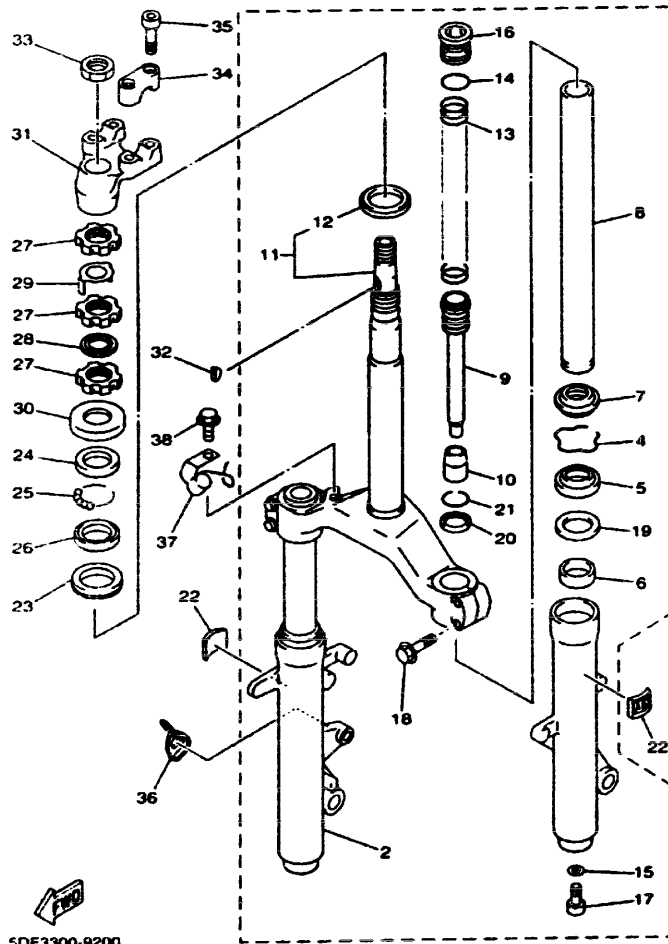


FIG. 20 STEERING

REF. NO.	PART NO.	DESCRIPTION	SDF3	SDF4	SDF5	SDF6	REMARKS
1	4HC-23100-30	FRONT FORK ASSY	1	1	1	1	
2	4HC-23136-30	TUBE, OUTER (RIGHT)	1	1	1	1	
3	4HC-23126-30	TUBE, OUTER (LEFT)	1	1	1	1	
4	22W-23153-L0	RING, SNAP	2	2	2	2	
5	2UJ-23145-00	OIL SEAL	2	2	2	2	
6	4HC-23125-20	METAL, SLIDE 1	2	2	2	2	
7	2UJ-23144-00	SEAL, DUST	2	2	2	2	
8	4HC-23110-20	INNER TUBE COMP.1	2	2	2	2	
9	4HC-23170-10	CYLINDER COMP., FRONT FORK	2	2	2	2	
10	4HC-23173-20	SPINDLE, TAPER	2	2	2	2	
11	4HC-23340-10	UNDER BRACKET COMP.	1	1	1	1	
12	164-23452-00	SEAL, STEERING	1	1	1	1	
13	4HC-23141-10	SPRING, FRONT FORK	2	2	2	2	
14	3J2-23114-00	O-RING	2	2	2	2	
15	509-23158-L0	GASKET	2	2	2	2	
16	4HC-23111-00	BOLT, CAP	2	2	2	2	
17	278-23181-50	BOLT, HEXAGON SOCKET HEAD	2	2	2	2	
18	95027-08040	BOLT, FLANGE	4	4	4	4	
19	22W-23146-L0	WASHER, OIL SEAL	2	2	2	2	
20	4HC-23184-10	CAP, AIR VALVE	2	2	2	2	
21	3G2-23113-00	RING, SNAP	2	2	2	2	
22	5CG-23418-00	EMBLEM	2	2			
23	93399-99942	BEARING	1	1	1	1	
24	22F-23411-01	RACE, BALL 1	1	1	1	1	
25	93503-16003	BALL	22	22	22	22	
26	22F-23412-01	RACE, BALL 2	1	1	1	1	
27	90179-25615	NUT	3	3	3	3	

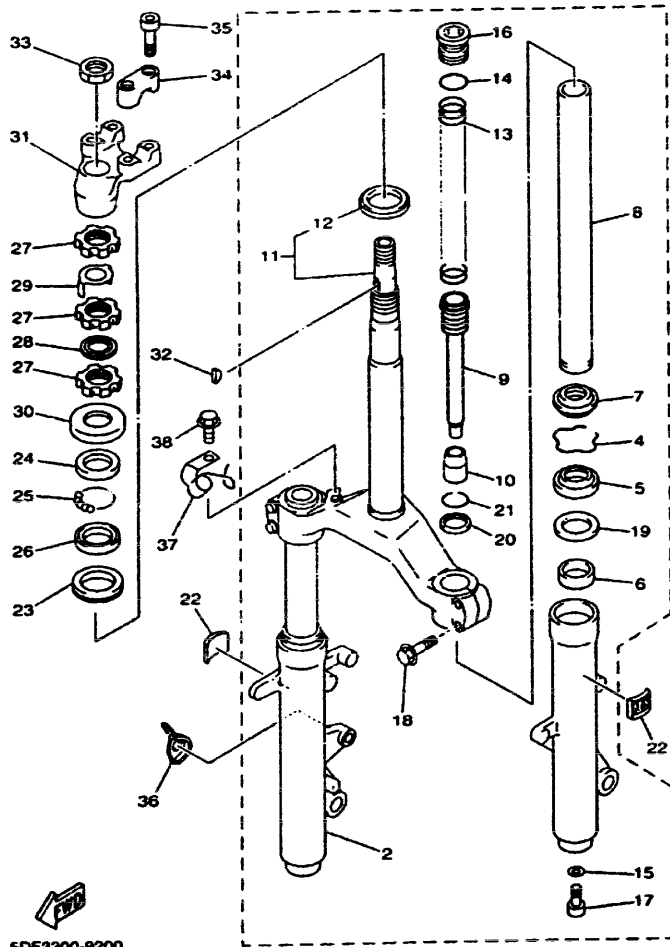


FIG. 20 STEERING

REF. NO.	PART NO.	DESCRIPTION	SDF3	SDF4	SDF5	SDF6	REMARKS
28	90202-26142	WASHER, PLATE	1	1	1	1	
29	3YF-23418-00	WASHER, SPECIAL	1	1	1	1	
30	3VP-23416-00	COVER, BALL RACE 2	1	1	1	1	
31	4HC-23442-10	HOLDER, HANDLE LOWER	1	1	1	1	
32	90280-03017	KEY, WOODRUFF	1	1	1	1	
33	90170-20386	NUT	1	1	1	1	
34	4H7-23441-00-98	HOLDER, HANDLE UPPER	2	2	2	2	LGB
35	91317-08030	BOLT	4	4	4	4	
36	5CG-23317-00	HOLDER, CABLE	1	1			
37	4HC-25875-01	HOLDER, BRAKE HOSE 1	1	1	1	1	
38	95807-06012	BOLT, FLANGE	1	1	1	1	

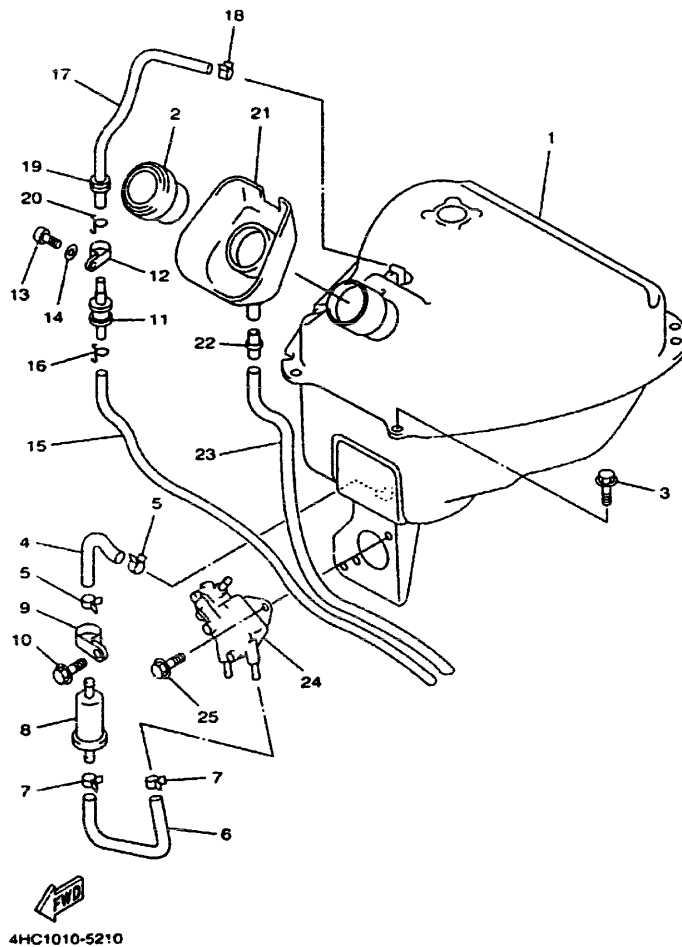
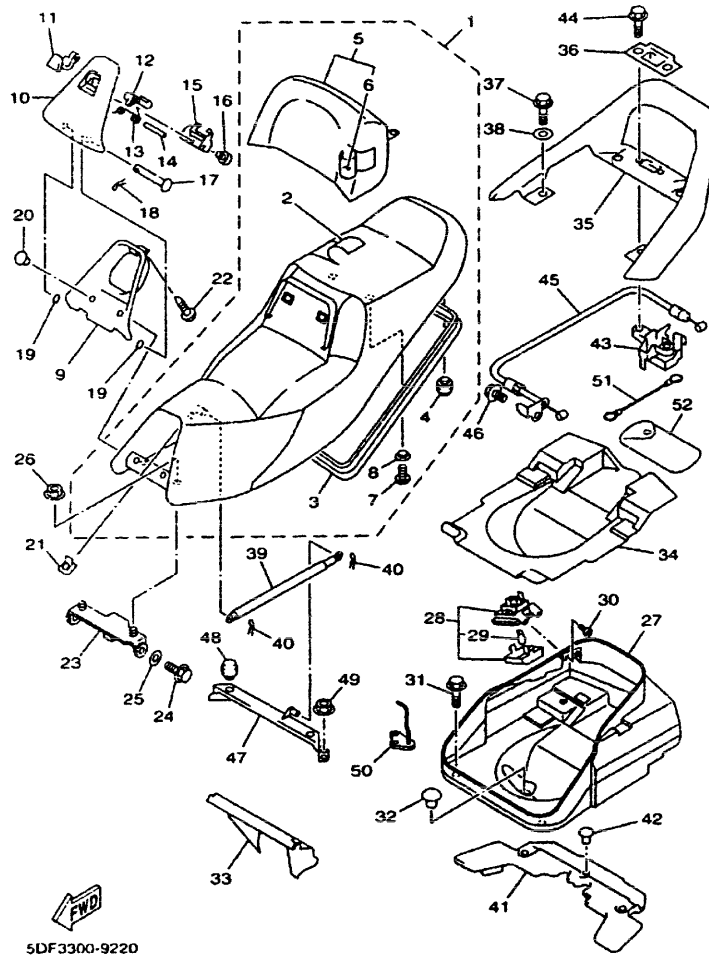


FIG. 21 FUEL TANK

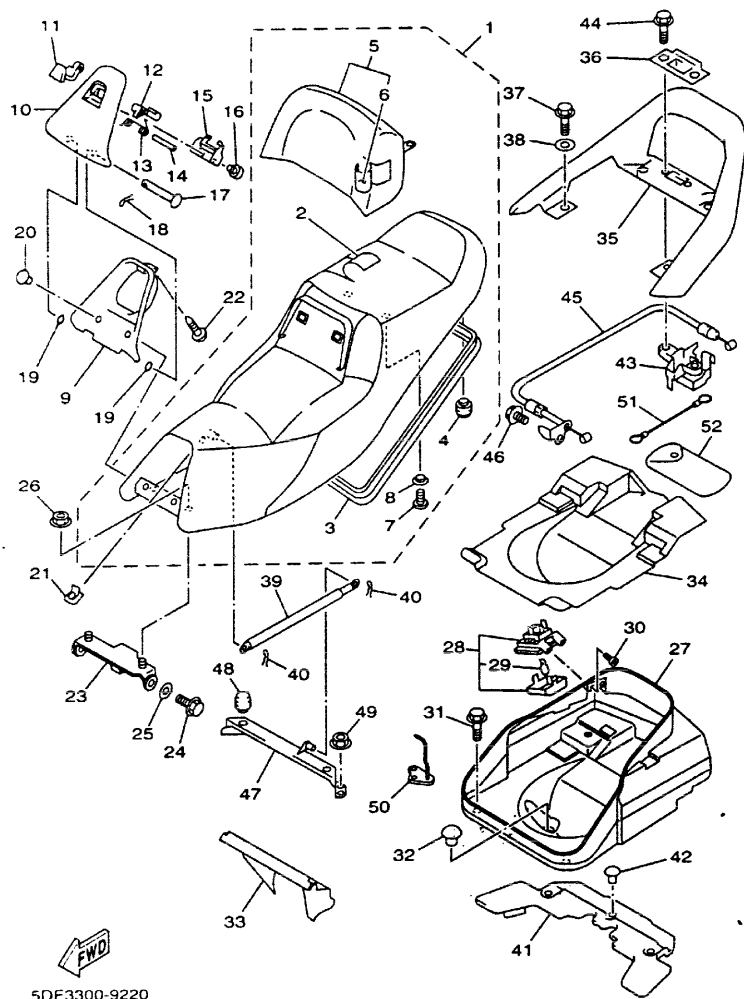
REF. NO.	PART NO.	DESCRIPTION	SDF3	SDF4	SDF5	SDF6	REMARKS
1	4HC-24110-00	FUEL TANK COMP.	1	1	1	1	
2	54K-24602-00	CAP ASSY	1	1	1	1	
3	95827-06012	BOLT, FLANGE	2	2	2	2	
4	4HC-24311-00	PIPE, FUEL 1	1	1	1	1	
5	90467-12053	CLIP	2	2	2	2	
6	4HC-24312-00	PIPE 2	1	1	1	1	
7	90467-12053	CLIP	2	2	2	2	
8	1FK-24560-00	FILTER ASSY	1	1	1	1	
9	1AE-24366-00	CLAMP, FUEL PIPE 1	1	1	1	1	
10	95027-06012	BOLT, FLANGE	1	1	1	1	
11	25H-24180-00	ROLL OVER VALVE ASSY	1	1	1	1	
12	90461-15100	CLAMP	1	1	1	1	
13	98507-05012	SCREW, PAN HEAD	1	1	1	1	
14	92907-05600	WASHER, PLATE	1	1	1	1	
15	90445-092K3	HOSE	1	1	1	1	
16	90467-09006	CLIP	1	1	1	1	
17	4HC-24313-01	PIPE 3	1	1	1	1	
18	90468-02078	CLIP	1	1	1	1	
19	90480-13018	GROMMET	1	1	1	1	
20	90467-09006	CLIP	1	1	1	1	
21	4HC-2414A-00	COVER, FILLER	1	1	1	1	
22	4JP-21753-00	BOSS, CONNECTOR	1	1	1	1	
23	4HC-24318-00	PIPE, OVERFLOW	1	1	1	1	
24	4HC-13910-10	FUEL PUMP ASSY	1	1	1	1	
25	95027-06012	BOLT, FLANGE	2	2	2	2	



5DF3300-9220

FIG. 22 SEAT

REF. NO.	PART NO.	DESCRIPTION	SDF3	SDF4	SDF5	SDF6	REMARKS
1	5DF-24730-B0	DOUBLE SEAT ASSY	1	1	1	1	
2	5CG-2470F-B0	.COVER, SEAT	1	1	1	1	
3	4HC-2475M-00	.SEAL	1	1	1	1	
4	1T4-24741-00	.PAD, SEAT	2	2	2	2	
5	4UC-24790-B0	.SEAT BACK ASSY	1	1	1	1	
6	4UC-2477A-B0	.SEAT COVER ASSY	1	1	1	1	
7	90110-06200	.BOLT, HEXAGON SOCKET HEAD	2	2	2	2	
8	90387-066R8	.COLLAR	2	2	2	2	
9	4HC-2473F-20	COVER, SEAT COMP.	1	1	1	1	
10	4HC-2473T-20	LID 1	1	1	1	1	
11	4HC-2477F-10	LEVER, SEAT	1	1	1	1	
12	4HC-24754-10	HOOK, SEAT	1	1	1	1	
13	4HC-24758-00	SPRING	1	1	1	1	
14	93603-50195	PIN, DOWEL	1	1	1	1	
15	4HC-24217-00	COVER	1	1	1	1	
16	97707-04108	SCREW, TAPPING	2	2	2	2	
17	90240-05047	PIN, CLEVIS	1	1	1	1	
18	90468-12007	CLIP	1	1	1	1	
19	93210-05187	O-RING	2	2	2	2	
20	90269-07076	RIVET	2	2	2	2	
21	90183-05042	NUT, SPRING	1	1	1	1	
22	90167-05079	SCREW, TAPPING	1	1	1	1	
23	4HC-2197J-10	HINGE 1	1	1	1	1	
24	90109-063F5	BOLT	2	2	2	2	
25	90206-10036	WASHER, WAVE	2	2	2	2	
26	95707-08500	NUT, FLANGE	2	2	2	2	
27	4HC-2473R-A0	BOX 1	1	1	1	1	



5DF3300-9220

FIG. 22 SEAT

REF. NO.	PART NO.	DESCRIPTION	SDF3	SDF4	SDF5	SDF6	REMARKS
28	4HC-84760-00	LAMP ASSY	1	1	1	1	
29	4HC-84347-00	.BULB (12V-2W)	1	1	1	1	
30	90167-04045	SCREW, TAPPING	2	2	2	2	
31	90119-06191	BOLT, WITH WASHER	4	4	4	4	
32	90338-11125	PLUG	1	1	1	1	
33	4HC-2177F-00	COVER	1	1	1	1	
34	4HC-24723-00	DAMPER, SEAT	1	1	1	1	
35	4HC-24773-A0-4B	HANDLE, SEAT	1	1			BL2
	4HC-24773-A0-P5	HANDLE, SEAT			1	1	VDBC4
	4HC-24773-A0-P3	HANDLE, SEAT			1	1	VDBM3
	4HC-24773-A0-P8	HANDLE, SEAT			1	1	LGNM6
*	4HC-24773-A0-P9	HANDLE, SEAT			1	1	LGYS2
36	4HC-2476U-00	PROTECTOR,1	1	1	1	1	
37	95817-08025	BOLT, FLANGE	4	4	4	4	
38	90201-064J1	WASHER, PLATE	4	4	4	4	
39	4HC-2478G-00	STOPPER	1	1	1	1	
40	90468-18121	CLIP	2	2	2	2	
41	4HC-21629-00	GUARD, MUD	1	1	1	1	
42	90269-07076	RIVET	3	3	3	3	
43	4JP-24780-02	SEAT LOCK ASSY	1	1	1	1	
44	95807-06020	BOLT, FLANGE	2	2	2	2	
45	4HC-2475E-00	CABLE, SEAT LOCK	1	1	1	1	
46	98507-05010	SCREW, PAN HEAD	1	1	1	1	
47	4HC-24738-00	BRACKET, SEAT	1	1	1	1	
48	1T4-24741-00	PAD, SEAT	2	2	2	2	
49	95707-06500	NUT, FLANGE	4	4	4	4	
50	4HC-21398-A0	HANGER, HELMET	1	1	1	1	

CONTENTS

ENGINE

CYLINDER	B2
CRANKSHAFT. PISTON	B3
VALVE	B4
CAMSHAFT. CHAIN	B5
WATER PUMP	B6
RADIATOR. HOSE	B7
OIL PUMP	B9
INTAKE	B10
CARBURETOR	B11
EXHAUST	B13
CRANKCASE	B14
CRANKCASE COVER 1	B15
STARTER	C2
CLUTCH	C3
TRANSMISSION	C5

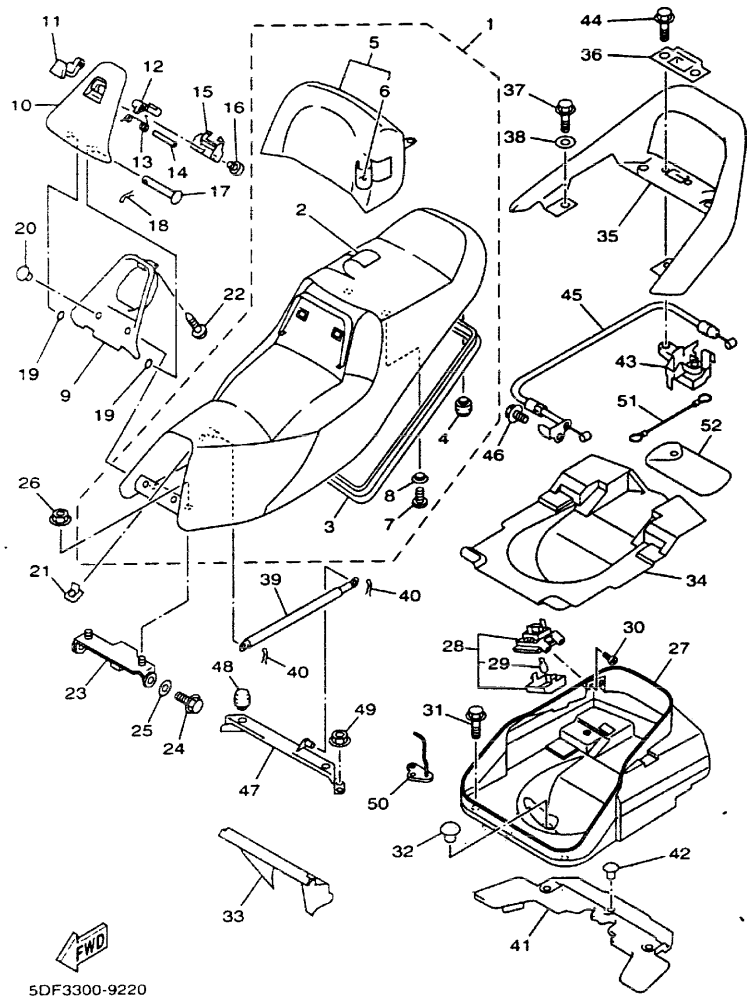
CHASSIS

FRAME	C6
FENDER	C7
SIDE COVER	C8
REAR ARM. SUSPENSION	C10
STEERING	C11
FUEL TANK	C13
SEAT	C14
FRONT WHEEL	D3
FRONT WHEEL 2	D4
FRONT BRAKE CALIPER	D5
REAR WHEEL	D6
REAR BRAKE CALIPER	D7
STEERING HANDLE. CABLE	D8
FRONT MASTER CYLINDER	D9
FRONT MASTER CYLINDER 2	D11

STAND. FOOTREST	D13
LEG SHIELD	D15
GENERATOR	E3
STARTING MOTOR	E4
FLASHER LIGHT	E5
METER	E6
METER 2	E7
HEADLIGHT	E8
TAILLIGHT	E9
HANDLE SWITCH. LEVER	E10
ELECTRICAL 1	E11
ELECTRICAL 2	E13
ELECTRICAL 3	E14

INDEX

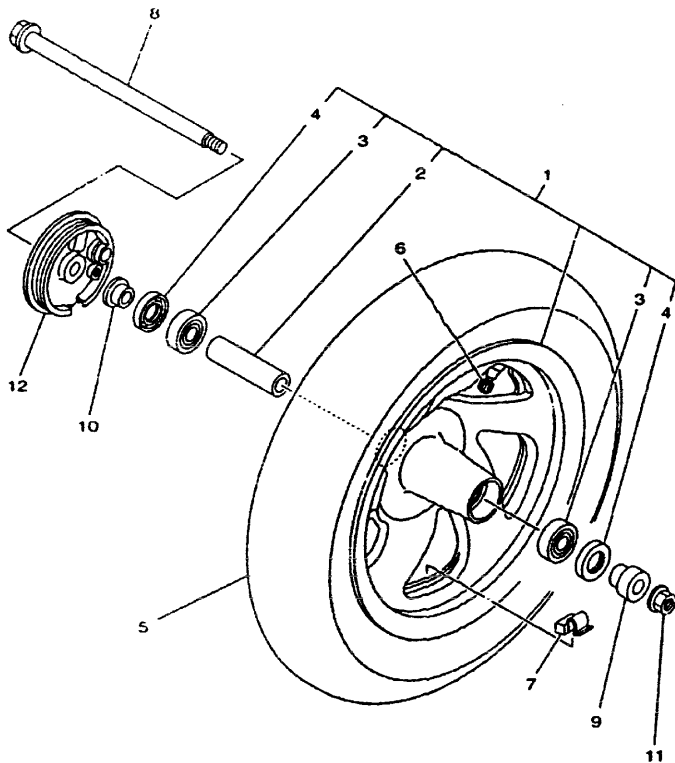
NUMERICAL INDEX	M1
-----------------------	----



5DF3300-9220

FIG. 22 SEAT

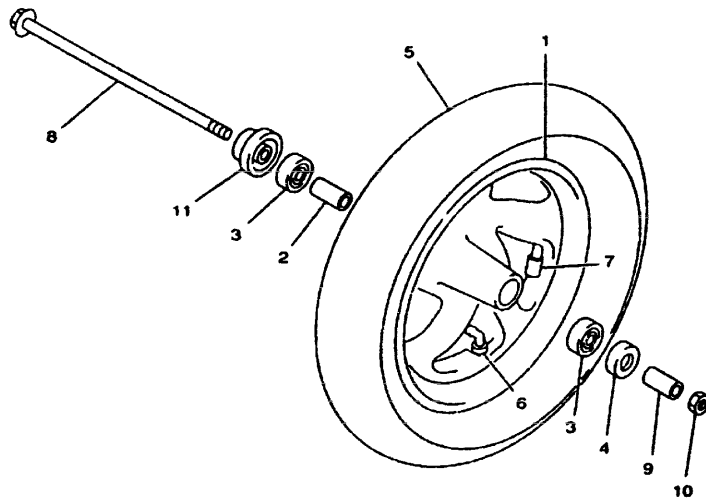
REF. NO.	PART NO.	DESCRIPTION	SDF3	SDF4	SDF5	SDF6	REMARKS
51	4HC-21398-00	HANGER, HELMET	1	1	1	1	
52	5CG-28100-00	TOOL KIT	1	1	1	1	




5CG2010-8252

FIG. 23 FRONT WHEEL

REF. NO.	PART NO.	DESCRIPTION	SDF3	SDF4	SDF5	SDF6	REMARKS
1	5CG-25160-A0-35	CAST WHEEL, FRONT	1	1			SL
2	90387-1508E	COLLAR	1	1			
3	93306-30202	BEARING	2	2			
4	93102-22014	OIL SEAL	2	2			
5	94111-1205A	TIRE (110/90-12 64J MB61)	1	1			UR INOUE
	94111-1207B	TIRE (110/90-12 64J C-922)	1	1			UR CHENGSHIN
6	93900-00022	VALVE, RIM	1	1			TAIHEIYO
7	29L-25398-00	BALANCER, WHEEL (10G)	1	1			UN
	29L-25398-10	BALANCER, WHEEL (20G)	1	1			UN
	29L-25398-20	BALANCER, WHEEL (30G)	1	1			UN
8	4HC-25181-00	AXLE, WHEEL	1	1			
9	90387-151R0	COLLAR	1	1			
10	90387-153N7	COLLAR	1	1			
11	90185-14166	NUT, SELF-LOCKING	1	1			
12	5CG-2517A-00	HOUSING, SENSOR FRONT	1	1			

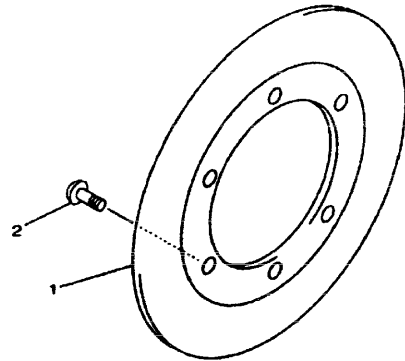
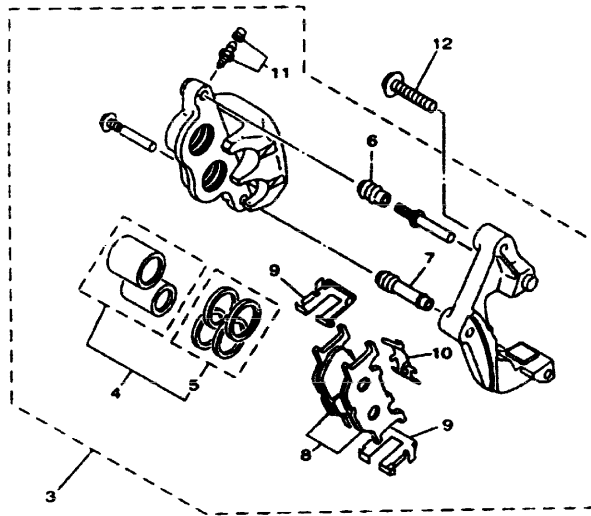



 4HC1010-5230

FIG. 24 FRONT WHEEL 2

REF. NO.	PART NO.	DESCRIPTION	SDF3	SDF4	SDF5	SDF6	REMARKS
1	4HC-25168-00-35	CAST WHEEL, FRONT			1	1	SL
2	90387-1508E	COLLAR			1	1	
3	93306-30202	BEARING			2	2	
4	93102-22014	OIL SEAL			1	1	
5	94111-1205A	TIRE (110/90-12 64J MB61)			1	1	UR INOUE
	94111-1207B	TIRE (110/90-12 64J C-922)			1	1	UR CHENGSHIN
6	93900-00022	VALVE, RIM			1	1	TAIHEIYO
7	29L-25398-00	BALANCER, WHEEL (10G)			1	1	UN
	29L-25398-10	BALANCER, WHEEL (20G)			1	1	UN
	29L-25398-20	BALANCER, WHEEL (30G)			1	1	UN
8	4HC-25181-00	AXLE, WHEEL			1	1	
9	90387-151R0	COLLAR			1	1	
10	90185-14166	NUT, SELF-LOCKING			1	1	
11	4HC-25190-00	GEAR UNIT ASSY			1	1	

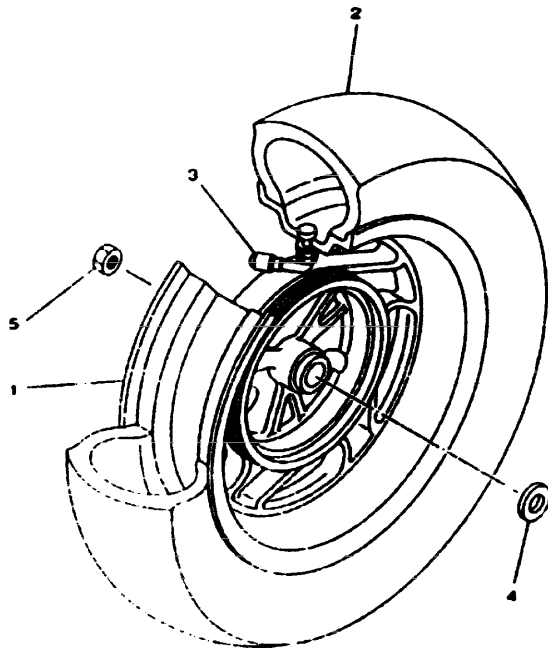
D4




 4UC1332-6240

FIG. 25 FRONT BRAKE CALIPER

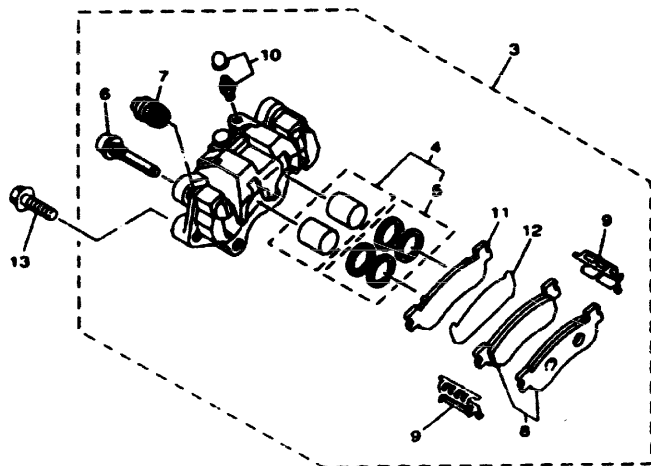
REF. NO.	PART NO.	DESCRIPTION	SDF3	SDF4	SDF5	SDF6	REMARKS
1	4HC-2582T-00	DISC, BRAKE	1	1	1	1	
2	90109-083G4	BOLT	6	6	6	6	
3	5CG-2580U-00	CALIPER ASSY (RIGHT)	1	1	1	1	
4	4FU-W0057-50	.PISTON ASSY, CALIPER	1	1	1	1	
5	4FU-W0047-50	.CALIPER SEAL KIT	1	1	1	1	
6	5HJ-25837-00	.BOOT 2	1	1	1	1	
7	3YX-25837-00	.BOOT 2	1	1	1	1	
8	4HM-W0045-00	.BRAKE PAD KIT	1	1	1	1	
9	4BP-25819-00	.SUPPORT, PAD	2	2	2	2	
10	3YX-25829-00	.SPRING, ANTI RATTLE	1	1	1	1	
11	51L-W0048-00	.BLEED SCREW KIT	1	1	1	1	
12	90105-10638	BOLT, WASHER BASED	2	2	2	2	




SCG1010-8280

FIG. 26 REAR WHEEL

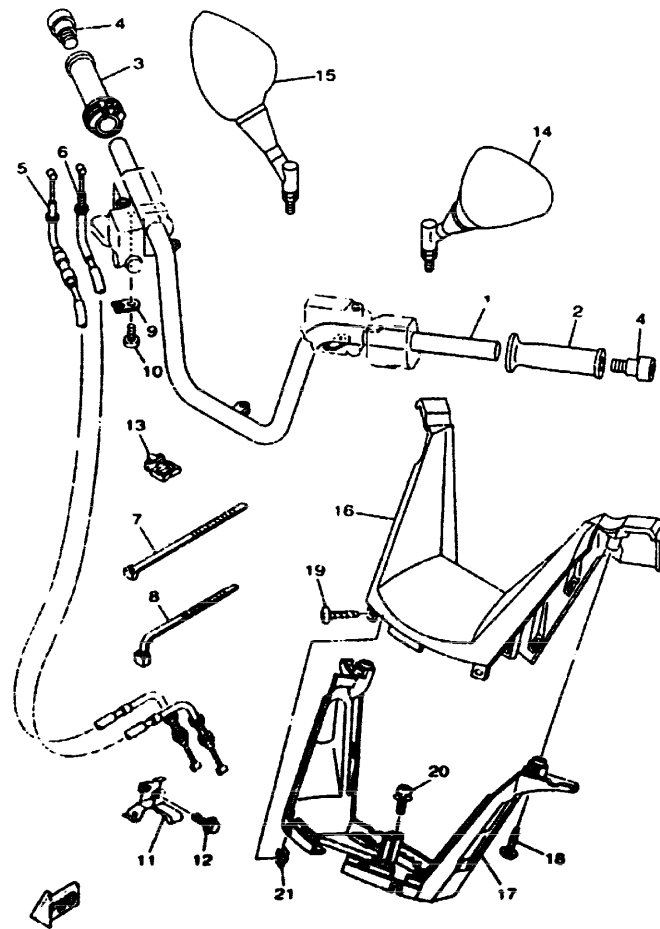
REF. NO.	PART NO.	DESCRIPTION	SDF3	SDF4	SDF5	SDF6	REMARKS
1	SCG-W2533-A0-35	CAST WHEEL, REAR	1	1			SL
	SCG-2533B-00-35	CAST WHEEL, REAR			1	1	SL
2	94113-1207P	TIRE (130/70-12 62L MB61)	1	1	1	1	UR INOUE
	94113-1207N	TIRE (130/70-12 62L C-940)	1	1	1	1	UR CHENGSHIN
3	93900-00025	VALVE, RIM	1	1	1	1	
4	90201-220J8	WASHER, PLATE	1	1	1	1	
5	90185-14183	NUT, SELF-LOCKING	1	1	1	1	



SCG1010-0280

FIG. 27 REAR BRAKE CALIPER

REF. NO.	PART NO.	DESCRIPTION	SDF3	SDF4	SDF5	SDF6	REMARKS
1	SCG-2582W-00	DISC, REAR BRAKE 2	1	1	1	1	
2	90108-083G4	BOLT	3	3	3	3	
3	SCG-2580W-02	CALIPER ASSY, REAR 2	1	1	1	1	
4	4TT-W0057-00	PISTON ASSY, CALIPER	1	1	1	1	
5	4ES-W0047-10	CALIPER SEAL KIT	1	1	1	1	
6	4TT-25814-00	PIN, SLIDE	2	2	2	2	
7	4TT-25837-00	BOOT 2	2	2	2	2	
8	SCG-W0048-02	BRAKE PAD KIT 2	1	1	1	1	
9	4TT-25819-00	SUPPORT, PAD	2	2	2	2	
10	51L-W0048-00	BLEED SCREW KIT	1	1	1	1	
11	SCG-25828-C0	SHIM, CALIPER	1	1	1	1	
12	SCG-25828-B0	SHIM, CALIPER	1	1	1	1	
13	90105-10638	BOLT, WASHER BASED	3	3	3	3	



SCG1010 8310

FIG. 28 STEERING HANDLE. CABLE

REF. NO.	PART NO.	DESCRIPTION	SDF3	SDF4	SDF5	SDF6	REMARKS
1	5CG-26110-00	HANDLE COMP.	1	1	1	1	
2	4YR-26241-01	GRIP (LEFT)	1	1	1	1	
3	4YR-26240-00	GRIP ASSY	1	1	1	1	
4	33M-26246-00	END, GRIP	2	2	2	2	
5	4HC-26311-02	CABLE, THROTTLE 1	1	1	1	1	
6	4HC-26312-02	CABLE, THROTTLE 2	1	1	1	1	
7	90464-20258	CLAMP	1	1	1	1	
8	90464-15195	CLAMP	1	1	1	1	
9	5HO-26393-00	HOLDER	1	1	1	1	
10	98507-05008	SCREW, PAN HEAD	1	1	1	1	
11	4HC-2637G-00	HOLDER, WIRE	1	1	1	1	
12	95027-06030	BOLT, FLANGE	1	1	1	1	
13	90464-23199	CLAMP	1	1	1	1	
14	5CG-26280-00	REAR VIEW MIRROR ASSY(LEFT)	1	1	1	1	
15	5CG-26290-00	REAR VIEW MIRROR ASSY(RIGHT)	1	1	1	1	
16	5CG-26143-00	COVER, HANDLEBAR UPPER 1	1	1	1	1	
17	5CG-26144-00	COVER, HANDLEBAR LOWER 1	1	1	1	1	
18	90167-05080	SCREW, TAPPING	2	2	2	2	
19	90167-05079	SCREW, TAPPING	4	4	4	4	
20	90159-05026	SCREW, WITH WASHER	1	1	1	1	
21	90183-05042	NUT, SPRING	4	4	4	4	

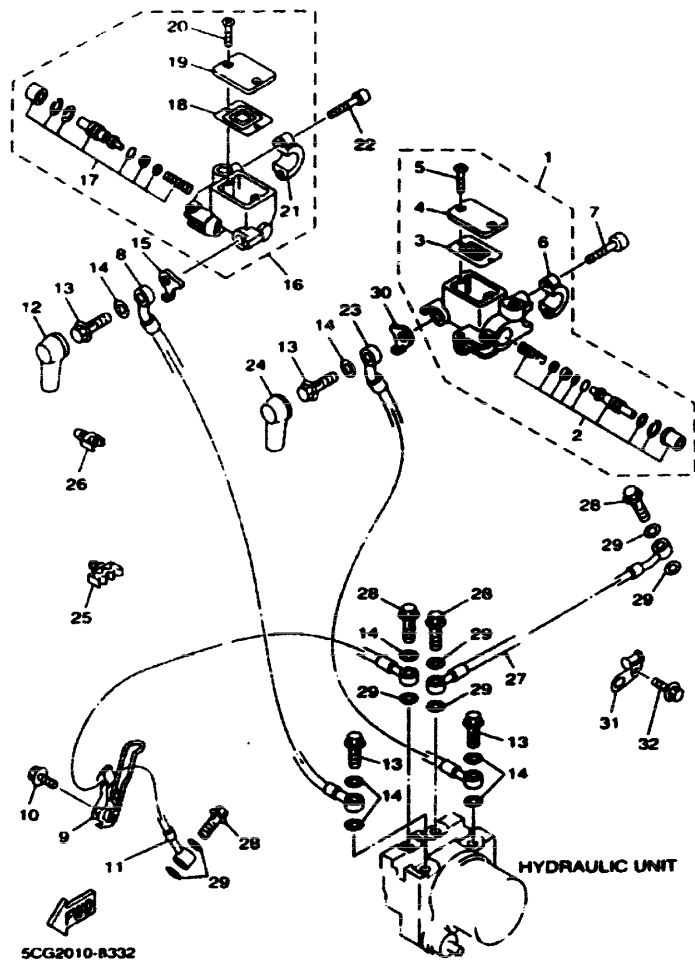


FIG. 29 FRONT MASTER CYLINDER

REF. NO.	PART NO.	DESCRIPTION	SDF3	SDF4	SDF5	SDF6	REMARKS
1	SCG-2583T-A0	MASTER CYLINDER ASSY	1	1			
2	SCG-W0041-A0	CYLINDER KIT, MASTER	1	1			
3	3RW-25854-00	DIAPHRAGM, RESERVOIR	1	1			
4	3RW-25852-00	CAP, RESERVOIR	1	1			
5	98706-04012	SCREW, FLAT HEAD	2	2			
6	3RW-25867-00	BRACKET, MASTER CYLINDER	1	1			
7	91317-08025	BOLT	2	2			
8	SCG-2584A-A0	BRAKE HOSE ASSY	1	1			
9	4HC-25876-00	HOLDER, BRAKE HOSE 2	1	1			
10	95807-08020	BOLT, FLANGE	1	1			
11	SCG-2584B-00	HOSE, BRAKE	1	1			
12	SCG-25862-00	BOOT, MASTER CYLINDER	1	1			
13	90401-10159	BOLT, UNION	4	4			
14	90201-10118	WASHER, PLATE	7	7			
15	SCG-25844-00	WASHER, LOCK	1	1			
16	SCG-2583T-B0	MASTER CYLINDER ASSY	1	1			
17	1JL-W0041-01	CYLINDER KIT, MASTER	1	1			
18	3RW-25854-00	DIAPHRAGM, RESERVOIR	1	1			
19	3RW-25852-00	CAP, RESERVOIR	1	1			
20	98706-04012	SCREW, FLAT HEAD	2	2			
21	3RW-25867-00	BRACKET, MASTER CYLINDER	1	1			
22	91317-08025	BOLT	2	2			
23	SCG-2584C-00	HOSE, BRAKE	1	1			
24	4L0-25882-01	BOOT, MASTER CYLINDER	1	1			
25	SCG-81678-00	CLAMP 2	2	2			
26	SCG-81677-00	CLAMP 1	1	1			
27	SCG-25874-00	HOSE, BRAKE	1	1			

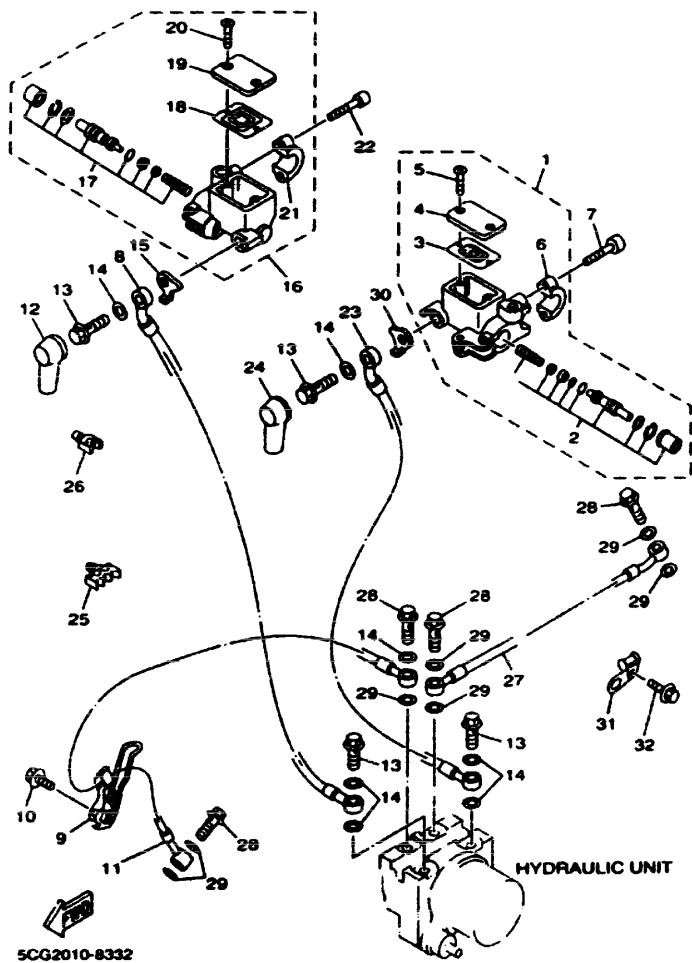


FIG. 29 FRONT MASTER CYLINDER

REF. NO.	PART NO.	DESCRIPTION	5DF3	5DF4	5DF5	5DF6	REMARKS
28	90401-10159	BOLT, UNION	4	4			
29	90201-10118	WASHER, PLATE	7	7			
20	SCG-25844-00	WASHER, LOCK	1	1			
31	4HC-2637H-00	HOLDER, WIRE 2	1	1			
32	95027-08014	BOLT, FLANGE	1	1			

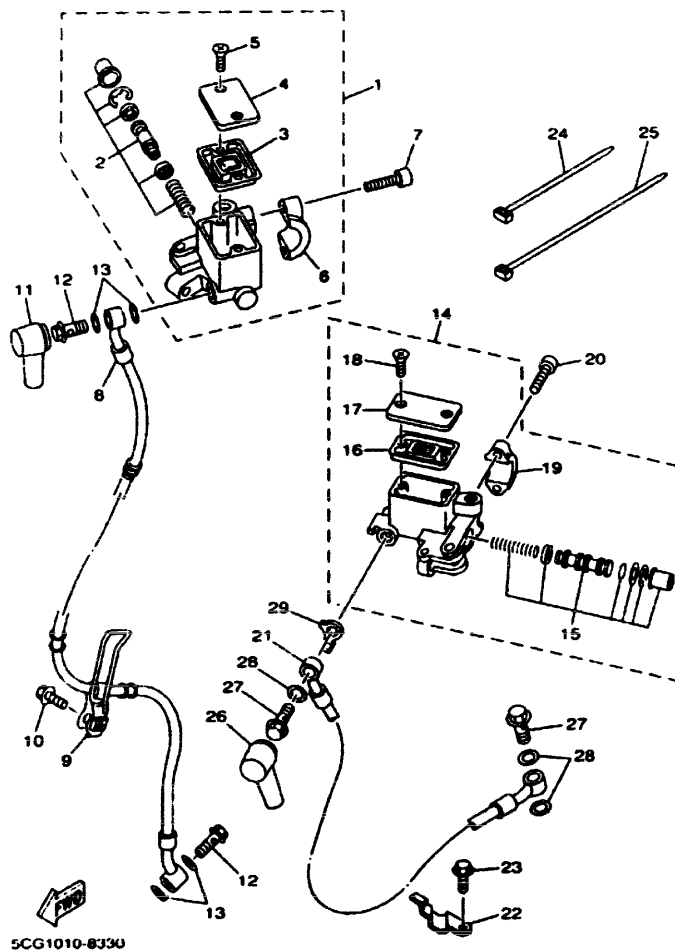


FIG. 30 FRONT MASTER CYLINDER 2

REF. NO.	PART NO.	DESCRIPTION					REMARKS
			SDF3	SDF4	SDF5	SDF6	
1	5CG-2583T-10	MASTER CYLINDER ASSY			1	1	
2	59X-W0041-00	.CYLINDER KIT, MASTER			1	1	
3	55U-25854-00	.DIAPHRAGM, RESERVOIR			1	1	
4	2KF-25852-01	.CAP, RESERVOIR			1	1	
5	98706-04012	.SCREW, FLAT HEAD			2	2	
6	56A-25867-00	.BRACKET, MASTER CYLINDER			1	1	
7	91317-06025	BOLT			2	2	
8	5CG-25872-00	HOSE, BRAKE 1			1	1	
9	4HC-25876-00	HOLDER, BRAKE HOSE 2			1	1	
10	95807-06020	BOLT, FLANGE			1	1	
11	4L0-25862-01	BOOT, MASTER CYLINDER			1	1	
12	90401-10159	BOLT, UNION			2	2	
13	90201-10118	WASHER, PLATE			4	4	
14	5CG-2583T-00	MASTER CYLINDER ASSY			1	1	
15	5CG-W0041-00	.CYLINDER KIT, MASTER			1	1	
16	3RW-25854-00	.DIAPHRAGM, RESERVOIR			1	1	
17	3RW-25852-00	.CAP, RESERVOIR			1	1	
18	98706-04012	.SCREW, FLAT HEAD			2	2	
19	3RW-25867-00	.BRACKET, MASTER CYLINDER			1	1	
20	91317-06025	BOLT			2	2	
21	5CG-2584A-00	BRAKE HOSE ASSY			1	1	
22	5CG-25886-00	HOLDER, BRAKE HOSE			1	1	
23	95807-06012	BOLT, FLANGE			1	1	
24	90465-13152	CLAMP			1	1	
25	90460-15126	CLAMP, HOSE			1	1	
26	4L0-25862-01	BOOT, MASTER CYLINDER			1	1	
27	90401-10159	BOLT, UNION			2	2	

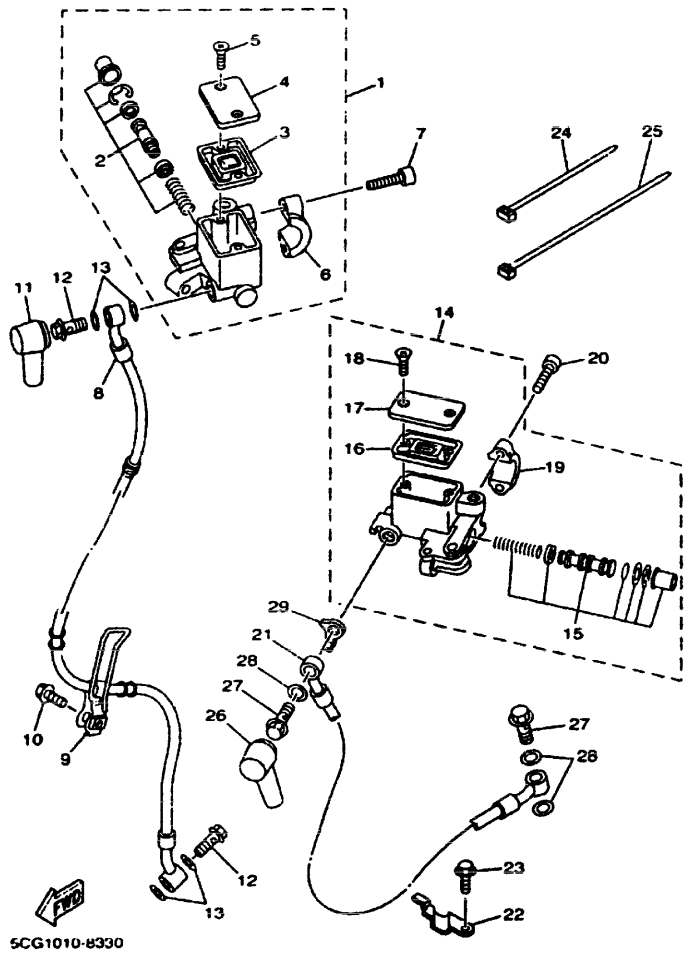
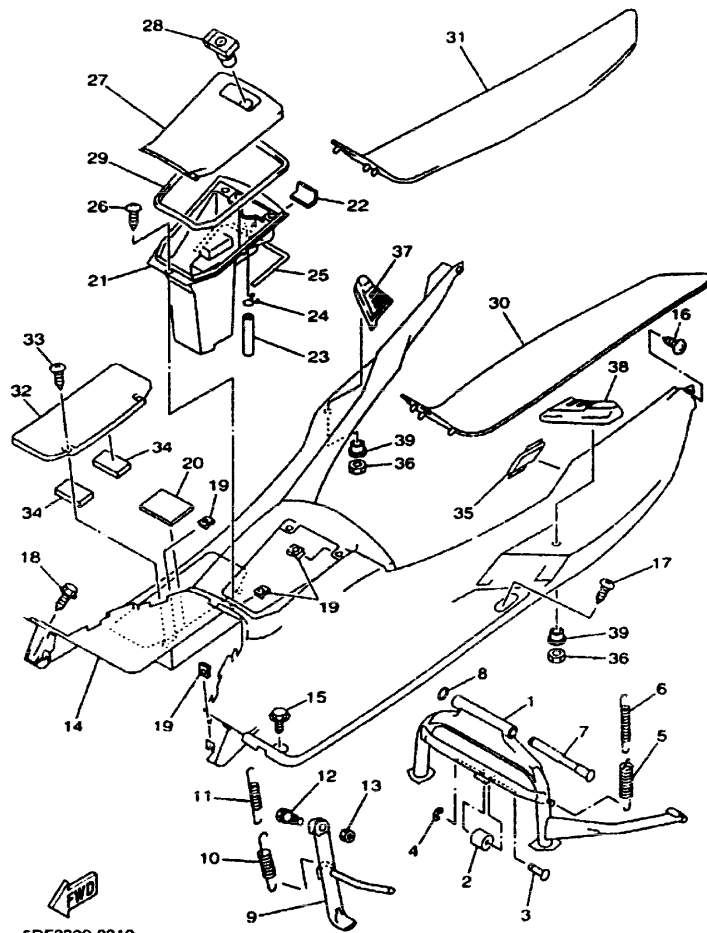


FIG. 30 FRONT MASTER CYLINDER 2

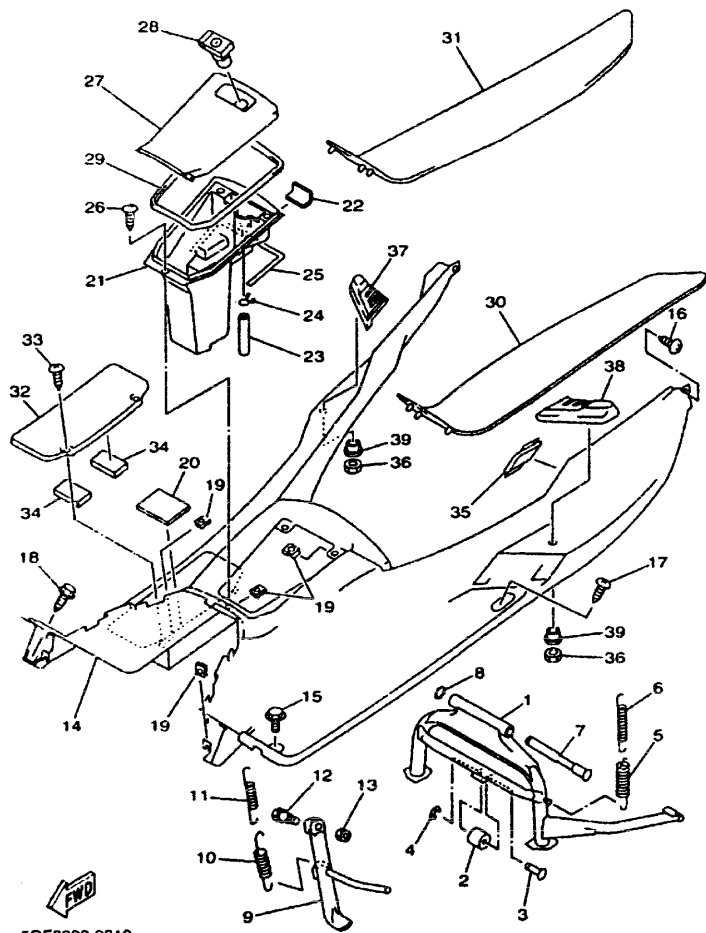
REF. NO.	PART NO.	DESCRIPTION	SDF3	SDF4	SDF5	SDF6	REMARKS
28	90201-10118	WASHER, PLATE			3	3	
29	5CG-25844-00	WASHER, LOCK			1	1	



SDF3300-9310

FIG. 31 STAND, FOOTREST

REF. NO.	PART NO.	DESCRIPTION	SDF3	SDF4	SDF5	SDF6	REMARKS
1	4HC-27111-00	STAND, MAIN	1	1	1	1	
2	4HC-27114-00	STOPPER, MAIN STAND	1	1	1	1	
3	4HC-27112-00	SHAFT, MAIN STAND	1	1	1	1	
4	99001-04800	CIRCLIP	1	1	1	1	
5	90506-40175	SPRING, TENSION	1	1	1	1	
6	90506-20158	SPRING, TENSION	1	1	1	1	
7	58K-27112-02	SHAFT, MAIN STAND	1	1	1	1	
8	93430-12008	CIRCLIP	1	1	1	1	
9	4HC-27311-01	STAND, SIDE	1	1	1	1	
10	90506-28225	SPRING, TENSION	1	1	1	1	
11	90506-18224	SPRING, TENSION	1	1	1	1	
12	90109-10473	BOLT	1	1	1	1	
13	90185-10110	NUT, SELF-LOCKING	1	1	1	1	
14	4HC-27481-B0	BOARD, FOOTREST	1	1	1	1	
15	90119-06060	BOLT, WITH WASHER	4	4	4	4	
16	90167-05080	SCREW, TAPPING	2	2	2	2	
17	90167-05080	SCREW, TAPPING	8	8	8	8	
18	90163-05006	SCREW, TAPPING	2	2	2	2	
19	90183-05042	NUT, SPRING	9	9	9	9	
20	4HC-27415-00	PLATE, FOOTREST	1	1	1	1	
21	5CG-2177A-00	BOX	1	1			
	4HC-2177A-00	BOX			1	1	
22	22F-2139X-00	DAMPER	1	1			
23	90445-09012	HOSE	1	1			
24	90467-09006	CLIP	1	1			
25	5CG-21747-00	DAMPER	1	1			
26	90167-05080	SCREW, TAPPING	3	3	3	3	



5DF3300-9310

FIG. 31 STAND, FOOTREST

REF. NO.	PART NO.	DESCRIPTION	SDF3	SDF4	SDF5	SDF6	REMARKS
27	4HC-27453-10	COVER 1	1	1	1	1	
28	4BH-21708-11	LOCK ASSY 2	1	1	1	1	
29	4HC-27485-00	SEAL	1	1	1	1	
30	4HC-27483-10	MAT 1	1	1	1	1	
31	4HC-27484-10	MAT 2	1	1	1	1	
<hr/>							
32	4HC-27463-10	COVER 2	1	1	1	1	
33	90167-05079	SCREW, TAPPING	2	2	2	2	
34	22F-24181-00	DAMPER, LOCATING 1	2	2	2	2	
35	4HC-27475-10	CAP 1	1	1	1	1	
36	95607-06200	NUT, SELF U-FLANGE	2	2	2	2	
<hr/>							
37	4HC-27444-00	COVER, REAR FOOTREST	1	1	1	1	
38	4HC-27433-00	COVER, REAR FOOTREST	1	1	1	1	
39	90387-06648	COLLAR	2	2	2	2	
<hr/>							
<hr/>							
<hr/>							
<hr/>							

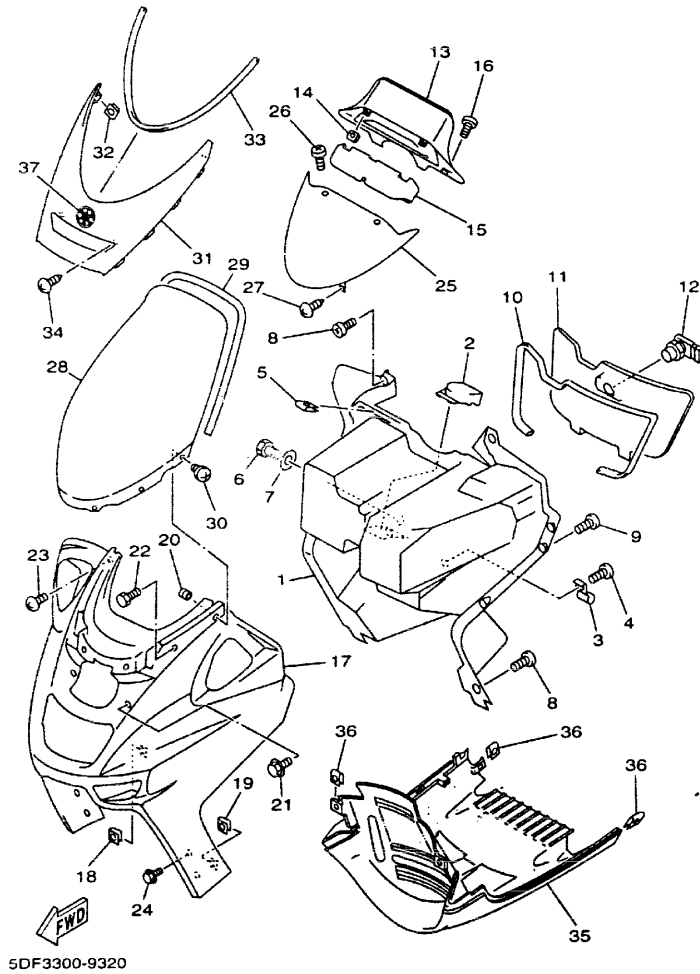


FIG. 32 LEG SHIELD

REF. NO.	PART NO.	DESCRIPTION	SDF3	SDF4	SDF5	SDF6	REMARKS
1	5CG-28300-10	LEG SHIELD ASSY	1	1	1	1	
2	4HC-28365-10	COVER	1	1	1	1	
3	4HC-21796-00	HINGE	2	2	2	2	
4	97707-40512	SCREW, TAPPING	2	2	2	2	
5	90183-05042	NUT, SPRING	2	2	2	2	
6	97007-06012	BOLT	1	1	1	1	
7	90201-06008	WASHER, PLATE	1	1	1	1	
8	90167-05079	SCREW, TAPPING	4	4	4	4	
9	90167-05080	SCREW, TAPPING	6	6	6	6	
10	4HC-28371-11	DAMPER	1	1	1	1	
11	4HC-2478A-20	LID ASSY	1	1	1	1	
12	4BH-21708-11	LOCK ASSY 2	1	1	1	1	
13	4HC-2836K-10	PANEL, INNER 1	1	1	1	1	
14	90183-05042	NUT, SPRING	2	2	2	2	
15	4HC-2836T-00	DAMPER, LOCATING 1	1	1	1	1	
16	90167-05079	SCREW, TAPPING	2	2	2	2	
17	4HC-28351-01-4B	BODY, COWLING	1	1			BL2
	4HC-28351-01-P4	BODY, COWLING			1	1	VDBM3
	4HC-28351-01-P5	BODY, COWLING			1	1	VDBC4
	4HC-28351-01-P8	BODY, COWLING			1	1	LGNM6
*	4HC-28351-01-P9	BODY, COWLING			1	1	LGYS2
18	3VP-21535-00	NUT 1	4	4	4	4	
*19	90183-05042	NUT, SPRING	6	6	6	6	
20	90179-05523	NUT	6	6	6	6	
21	90119-06060	BOLT, WITH WASHER	2	2	2	2	
22	90109-063F1	BOLT	2	2	2	2	
23	90167-05080	SCREW, TAPPING	2	2	2	2	

CONTENTS

ENGINE

CYLINDER	B2
CRANKSHAFT, PISTON	B3
VALVE	B4
CAMSHAFT, CHAIN	B5
WATER PUMP	B6
RADIATOR, HOSE	B7
OIL PUMP	B9
INTAKE	B10
CARBURETOR	B11
EXHAUST	B13
CRANKCASE	B14
CRANKCASE COVER 1	B15
STARTER	C2
CLUTCH	C3
TRANSMISSION	C5

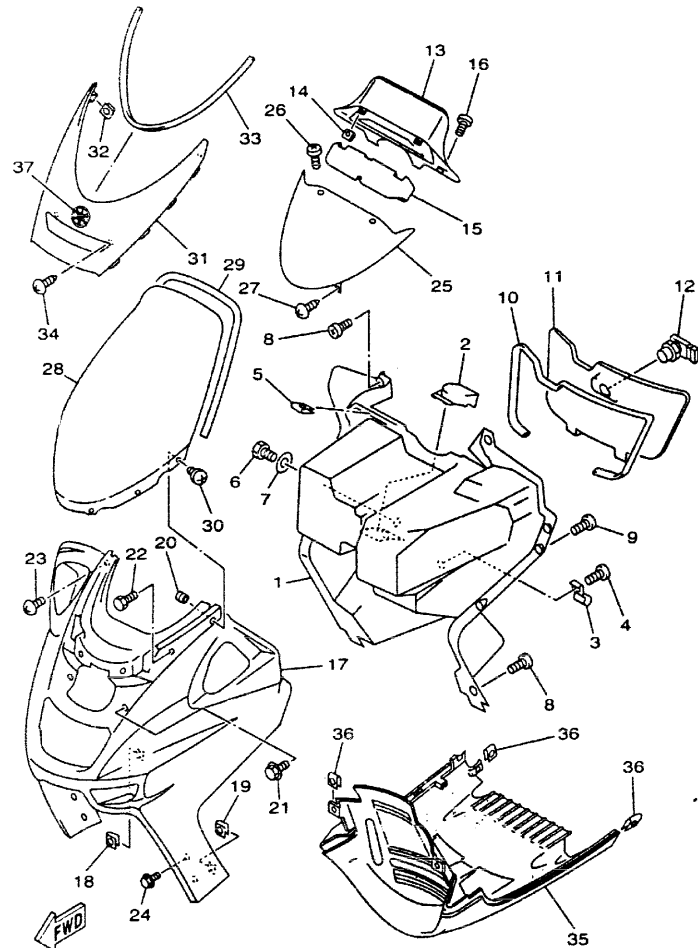
CHASSIS

FRAME	C6
FENDER	C7
SIDE COVER	C8
REAR ARM, SUSPENSION	C10
STEERING	C11
FUEL TANK	C13
SEAT	C14
FRONT WHEEL	D3
FRONT WHEEL 2	D4
FRONT BRAKE CALIPER	D5
REAR WHEEL	D6
REAR BRAKE CALIPER	D7
STEERING HANDLE, CABLE	D8
FRONT MASTER CYLINDER	D9
FRONT MASTER CYLINDER 2	D11

STAND, FOOTREST	D13
LEG SHIELD	D15
GENERATOR	E3
STARTING MOTOR	E4
FLASHER LIGHT	E5
METER	E6
METER 2	E7
HEADLIGHT	E8
TAILLIGHT	E9
HANDLE SWITCH, LEVER	E10
ELECTRICAL 1	E11
ELECTRICAL 2	E13
ELECTRICAL 3	E14

INDEX

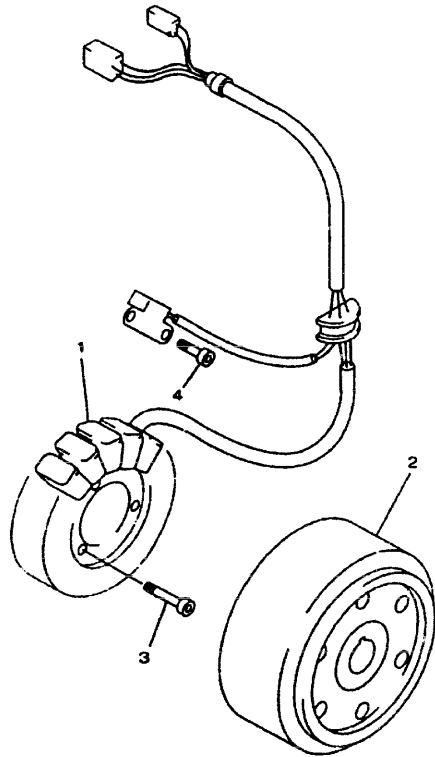
NUMERICAL INDEX	M1
-----------------------	----



5DF3300-9320

FIG. 32 LEG SHIELD

REF. NO.	PART NO.	DESCRIPTION	SDF3	SDF4	SDF5	SDF6	REMARKS
24	90163-05006	SCREW, TAPPING	4	4	4	4	
25	4HC-2836L-10	PANEL, INNER 2	1	1	1	1	
26	90167-05079	SCREW, TAPPING	2	2	2	2	
27	90167-05079	SCREW, TAPPING	2	2	2	2	
28	5CG-2837U-00	SCREEN	1	1	1	1	
29	4EJ-28376-00	TRIM	1	1	1	1	
30	90150-05024	SCREW, ROUND HEAD	6	6	6	6	
31	4HC-28345-00-7B	MOLE 1	1	1	1	1	BIB2
32	90183-05042	NUT, SPRING	2	2	2	2	
33	1NL-28347-01	MOLE 3	1	1	1	1	
34	90167-05079	SCREW, TAPPING	4	4	4	4	
35	4HC-28385-A0-9G	COVER, LOWER	1	1			FRS
	4HC-28385-A0-P6	COVER, LOWER			1	1	VFBC4
	4HC-28385-A0-P4	COVER, LOWER			1	1	VDBM3
	4HC-28385-A0-P9	COVER, LOWER			1	1	LGNM6
*	4HC-28385-A0-PA	COVER, LOWER				1	LNMB FOR LGYS2
36	90183-05042	NUT, SPRING	8	8	8	8	
37	5DF-2157B-00	EMBLEM	1	1	1	1	

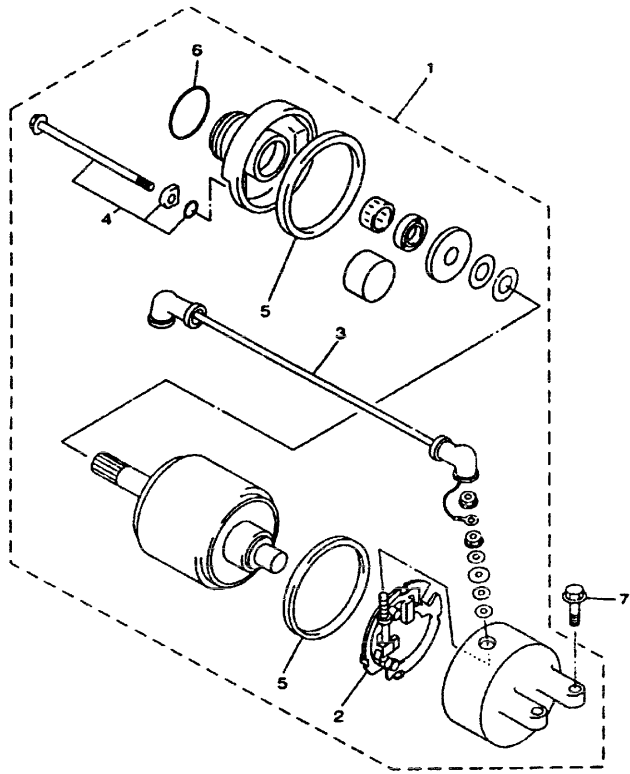


4HC1010-5300

FIG. 33 GENERATOR

REF. NO.	PART NO.	DESCRIPTION	SDF3	SDF4	SDF5	SDF6	REMARKS
1	4HC-81410-10	STATOR ASSY	1	1	1	1	
2	4HC-81450-00	ROTOR ASSY	1	1	1	1	
3	90110-05253	BOLT, HEXAGON SOCKET HEAD	3	3	3	3	
4	91317-05012	BOLT	2	2	2	2	

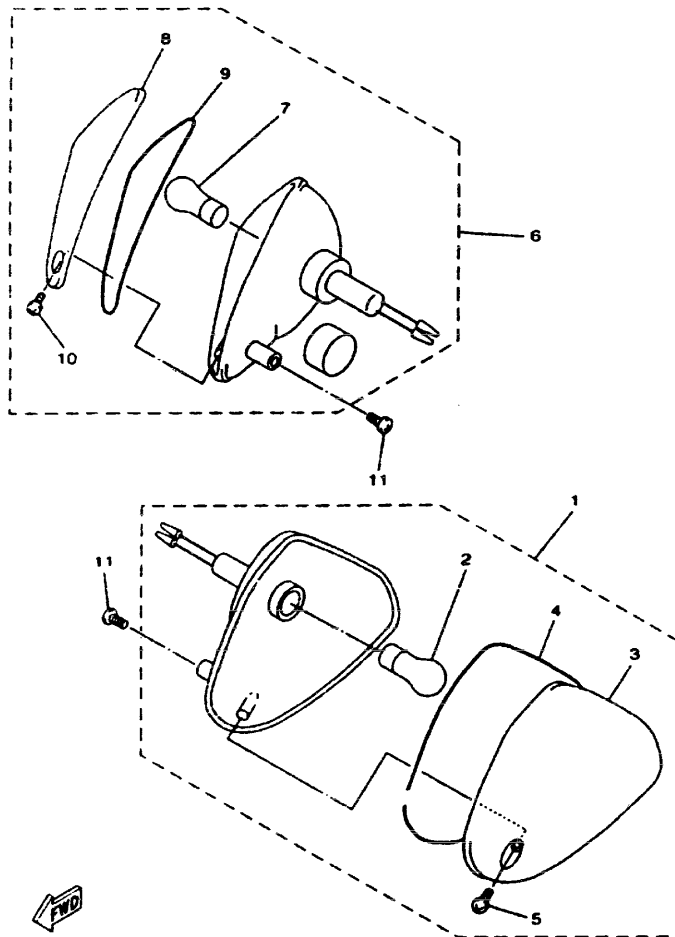
E3




 4HC1010-5310

FIG. 34 STARTING MOTOR

REF. NO.	PART NO.	DESCRIPTION	SDF3	SDF4	SDF5	SDF6	REMARKS
1	4HC-81800-00	STARTING MOTOR ASSY	1	1	1	1	
2	3KS-81840-00	.BRUSH HOLDER ASSY	1	1	1	1	
3	4HC-81815-00	.CORD. STARTER MOTOR	1	1	1	1	
4	3WP-81826-00	.BOLT	2	2	2	2	
5	11H-81844-00	.GASKET	2	2	2	2	
6	1FK-81847-00	.O-RING	1	1	1	1	
7	95817-06025	BOLT, FLANGE	2	2	2	2	



4HC1010-5320

FIG. 35 FLASHER LIGHT

REF. NO.	PART NO.	DESCRIPTION	SDF3	SDF4	SDF5	SDF6	REMARKS
1	3XW-83310-10	FRONT FLASHER LIGHT ASSY 1	1	1	1	1	
2	32H-83331-00	.BULB, FLASHER (12V-21W)	1	1	1	1	
3	3XW-83312-00	.LENS, FLASHER	1	1	1	1	
4	3XW-83313-00	.GASKET, FLASHER LENS	1	1	1	1	
5	97707-40120	.SCREW, TAPPING	1	1	1	1	
6	3XW-83320-10	FRONT FLASHER LIGHT ASSY 2	1	1	1	1	
7	32H-83331-00	.BULB, FLASHER (12V-21W)	1	1	1	1	
8	3XW-83322-00	.LENS, FLASHER 2	1	1	1	1	
9	3XW-83313-00	.GASKET, FLASHER LENS	1	1	1	1	
10	97707-40120	.SCREW, TAPPING	1	1	1	1	
11	97707-50016	SCREW, TAPPING	4	4	4	4	

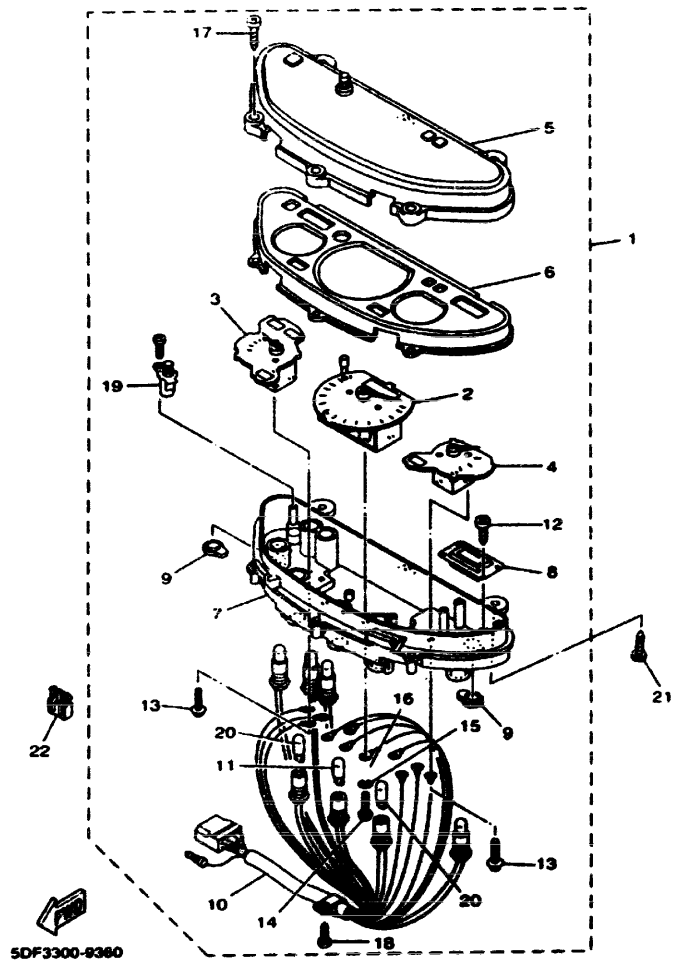
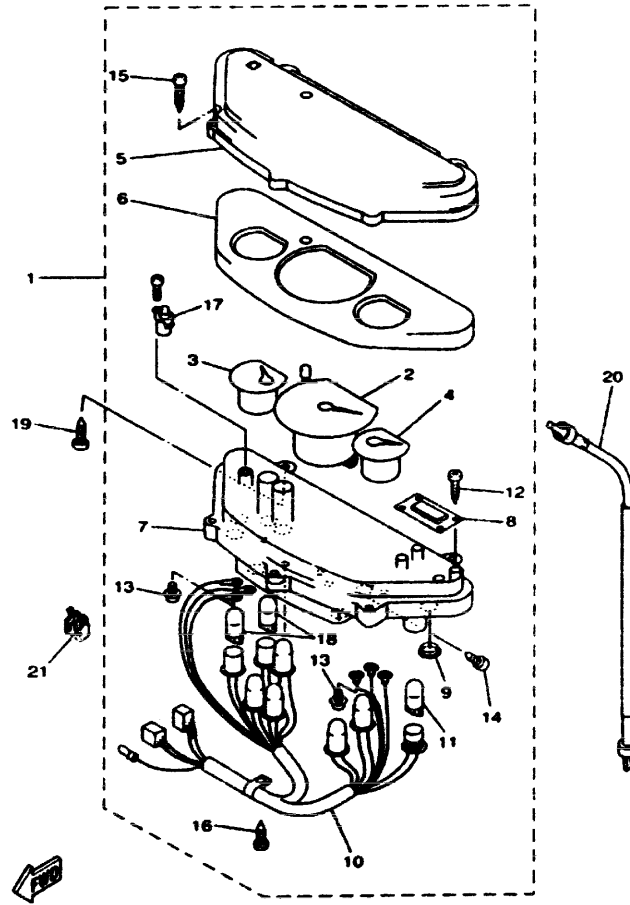


FIG. 36 METER

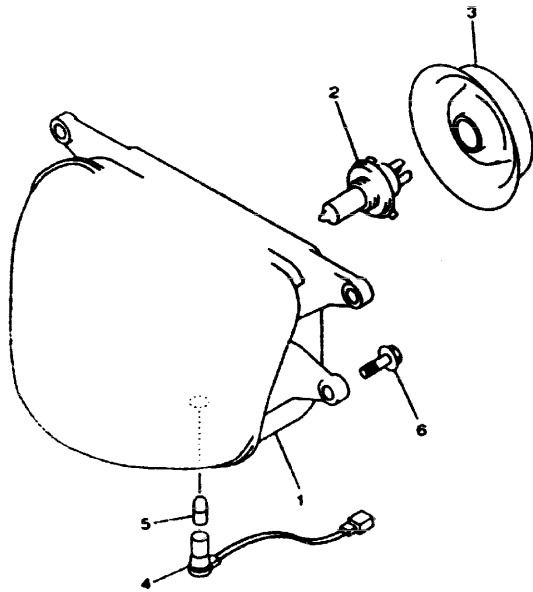
REF. NO.	PART NO.	DESCRIPTION	5DF3	5DF4	5DF5	5DF6	REMARKS
1	5CG-83500-30	SPEEDOMETER ASSY	1	1			
	5CG-83500-50	SPEEDOMETER ASSY	1				FOR GBR
2	5CG-83510-30	SPEEDOMETER ASSY	1	1			
	5CG-83510-50	SPEEDOMETER ASSY	1				FOR GBR
3	5CG-85750-00	FUEL METER ASSY	1	1			
4	5CG-83590-00	WATER TEMPERATURE ASSY	1	1			
5	4HC-83511-00	LENS, SPEEDOMETER	1	1			
6	5CG-83812-00	COVER, METER PANEL	1	1			
7	5CG-8353H-00	CASE, UNDER	1	1			
8	4HC-83740-00	DIGITAL CLOCK ASSY	1	1			
9	3SX-8352K-00	PLUG, BLIND	2	2			
10	5CG-83509-00	SOCKET CORD ASSY	1	1			
11	1YT-83517-00	BULB (12V-1.7W, T10)	5	5			
12	97707-30512	SCREW, TAPPING	4	4			
13	90159-03102	SCREW, WITH WASHER	6	6			
14	98580-03020	SCREW, PAN HEAD	5	5			
15	92902-03100	WASHER	5	5			
16	92902-03600	WASHER, PLATE	5	5			
17	97707-40016	SCREW, TAPPING	4	4			
18	97707-40014	SCREW, TAPPING	1	1			
19	4HC-83984-00	SWITCH	1	1			
20	4RD-83517-00	BULB (12V-3.4W T10)	2	2			
21	97707-50016	SCREW, TAPPING	2	2			
22	4HC-2837G-00	LOCK 1	2	2			



4HC1010-5330

FIG. 37 METER 2

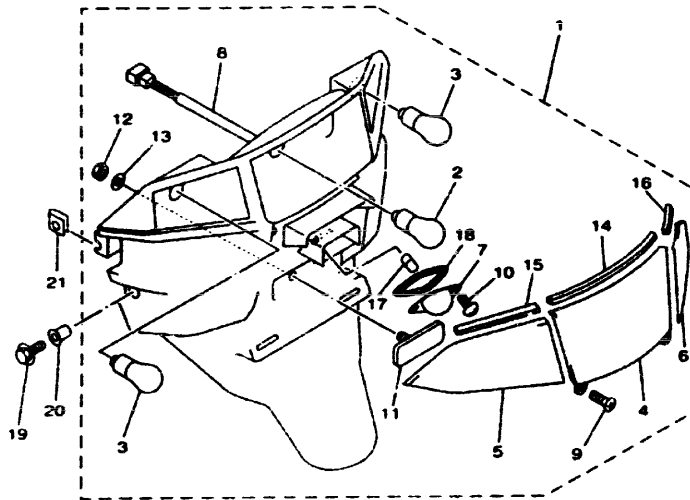
REF. NO.	PART NO.	DESCRIPTION	SDF3	SDF4	SDF5	SDF6	REMARKS
1	5CG-83500-00	SPEEDOMETER ASSY			1	1	
	5CG-83500-20	SPEEDOMETER ASSY			1		FOR GBR
2	5CG-83510-00	SPEEDOMETER ASSY			1	1	
	5CG-83510-20	SPEEDOMETER ASSY			1		FOR GBR
3	5CG-85750-00	FUEL METER ASSY			1	1	
4	5CG-83580-00	WATER TEMPERATURE ASSY			1	1	
5	4HC-83511-00	LENS, SPEEDOMETER			1	1	
6	5CG-83812-00	COVER, METER PANEL			1	1	
7	4HC-8353H-00	CASE, UNDER			1	1	
8	4HC-83740-00	DIGITAL CLOCK ASSY			1	1	
9	3SX-8352K-00	PLUG, BLIND			2	2	
10	4HC-83509-00	SOCKET CORD ASSY			1	1	
11	1YT-83517-00	BULB (12V-1.7W, T10)			6	6	
12	97707-30512	SCREW, TAPPING			4	4	
13	90159-03102	SCREW, WITH WASHER			6	6	
14	90187-04021	SCREW, TAPPING			2	2	
15	97707-40016	SCREW, TAPPING			4	4	
16	97707-40014	SCREW, TAPPING			1	1	
17	4HC-83864-00	SWITCH			1	1	
18	4R0-83517-00	BULB (12V-3.4W T10)			2	2	
19	97707-50016	SCREW, TAPPING			4	4	
20	4HC-83550-00	SPEEDOMETER CABLE ASSY			1	1	
21	4HC-2837G-00	LOCK 1			2	2	




4UC1332-6340

FIG. 38 HEADLIGHT

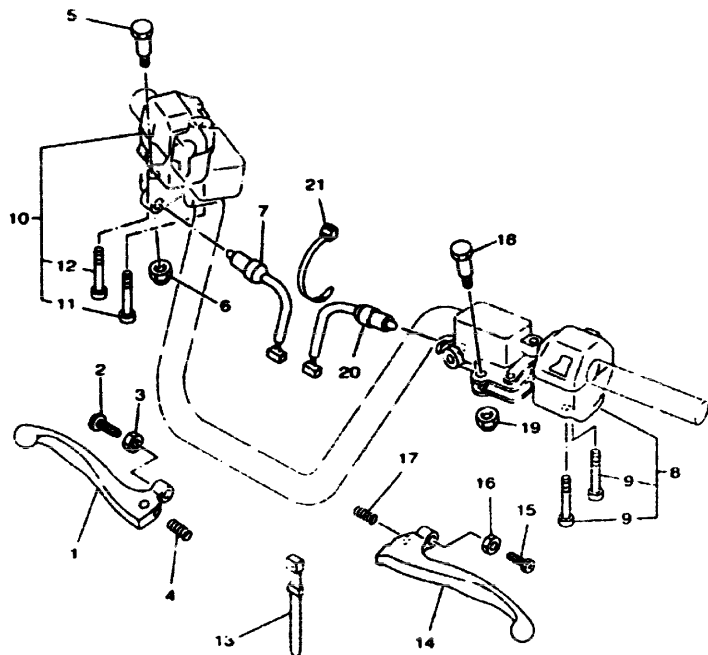
REF. NO.	PART NO.	DESCRIPTION	SDF3	SDF4	SDF5	SDF6	REMARKS
1	4UC-84320-00	LENS ASSY	1	1	1	1	
	4UC-84320-10	LENS ASSY	1		1		FOR GBR
2	8G8-84314-00	BULB (12V-80/55W)	1	1	1	1	(H4)HALOGEN
3	4SV-84397-00	COVER, SOCKET	1	1	1	1	
4	4UC-84312-00	HOLDER, SOCKET	1	1	1	1	
5	4SV-84347-00	BULB (12V-5W)	1	1	1	1	
6	95807-08020	BOLT, FLANGE	4	4	4	4	




4HC1010-5351

FIG. 39 TAILLIGHT

REF. NO.	PART NO.	DESCRIPTION	SD#3	SD#4	SD#5	SD#6	REMARKS
1	4HC-84710-00	TAILLIGHT UNIT ASSY	1	1	1	1	
2	31L-84714-00	.BULB, TAILLIGHT (12V-21/5W)	1	1	1	1	
3	2AE-83311-00	.BULB, FLASHER (12V-21W)	2	2	2	2	
4	4HC-84721-00	.LENS, TAILLIGHT	1	1	1	1	
5	4HC-83332-00	.LENS, FLASHER	1	1	1	1	
6	4HC-83342-00	.LENS, FLASHER 2	1	1	1	1	
7	4HC-84743-00	.LENS, LICENCE LIGHT	1	1	1	1	
8	4HC-84735-00	.CORD ASSY	1	1	1	1	
9	97706-40116	.SCREW, TAPPING	2	2	2	2	
10	97702-40116	.SCREW, TAPPING	2	2	2	2	
11	3Y6-85130-02	.REAR REFLECTOR ASSY	1	1	1	1	
12	957G7-05600	.NUT, FLANGE	1	1	1	1	
13	92902-05100	.WASHER, SPRING	1	1	1	1	
14	4HC-84704-00	.GASKET, TAILLIGHT	1	1	1	1	
15	4HC-83313-00	.GASKET, FLASHER LENS	1	1	1	1	
16	4HC-83343-00	.GASKET, FLASHER LENS	1	1	1	1	
17	4HC-84744-00	.BULB (12V-5W)	1	1	1	1	
18	4HC-84545-00	.GASKET, LENS	1	1	1	1	
19	95807-06014	BOLT, FLANGE	2	2	2	2	
20	90367-0700D	COLLAR	2	2	2	2	
21	90183-05042	NUT, SPRING	4	4	4	4	



5DF1332-8370

FIG. 40 HANDLE SWITCH. LEVER

REF. NO.	PART NO.	DESCRIPTION	5DF3	5DF4	5DF5	5DF6	REMARKS
1	5CG-83922-00	LEVER 2	1	1	1	1	
2	90143-08024	SCREW, HEXAGON	1	1	1	1	
3	90170-08010	NUT	1	1	1	1	
4	90501-10312	SPRING, COMPRESSION	1	1	1	1	
5	90109-06577	BOLT	1	1	1	1	
6	95807-06100	NUT, U	1	1	1	1	
7	5CG-83980-00	FRONT STOP SWITCH ASSY	1	1			
	4FU-83980-00	FRONT STOP SWITCH ASSY			1	1	
8	4HC-83972-01	SWITCH, HANDLE 4	1	1	1	1	
9	98507-05035	SCREW, PAN HEAD	2	2	2	2	
10	4UC-83963-01	SWITCH, HANDLE 3 (RIGHT)	1	1	1	1	
11	98507-05040	SCREW, PAN HEAD	1	1	1	1	
12	98507-05045	SCREW, PAN HEAD	1	1	1	1	
13	90464-05141	CLAMP	1	1	1	1	
14	5CG-83912-10	LEVER 1	1	1	1	1	
15	90143-08024	SCREW, HEXAGON	1	1	1	1	
16	90170-08010	NUT	1	1	1	1	
17	90501-10312	SPRING, COMPRESSION	1	1	1	1	
18	90109-06577	BOLT	1	1	1	1	
19	95807-06100	NUT, U	1	1	1	1	
20	5CG-83980-10	FRONT STOP SWITCH ASSY	1	1			
	4FU-83980-00	FRONT STOP SWITCH ASSY			1	1	
21	90464-18061	CLAMP	2	2	2	2	

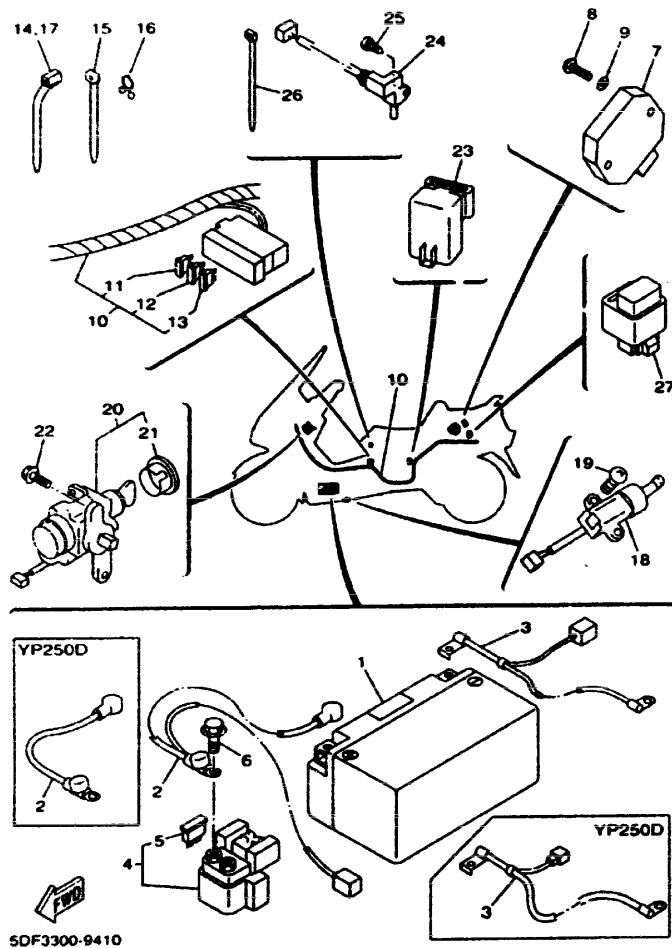


FIG. 41 ELECTRICAL 1

REF. NO.	PART NO.	DESCRIPTION	SDF5	SDF4	SDF5	SDF6	REMARKS
1	4UC-82100-01	BATTERY ASSY	1	1	1	1	
2	5CG-82115-00	WIRE, PLUS LEAD	1	1			
	4HC-82115-00	WIRE, PLUS LEAD			1	1	
3	5CG-82116-00	WIRE, MINUS LEAD	1	1			
	4HC-82116-00	WIRE, MINUS LEAD			1	1	
4	4FL-81940-00	STARTER RELAY ASSY	1	1	1	1	
5	2GH-82151-00	.FUSE (20A-BL)	2	2	2	2	
6	95027-06008	BOLT, FLANGE	2	2	2	2	
7	4HM-81980-01	RECTIFIER & REGULATOR ASSY	1	1	1	1	
8	98507-08025	SCREW, PAN HEAD	2	2	2	2	
9	92907-08800	WASHER, PLATE	2	2	2	2	
10	5DF-82590-00	WIRE HARNESS ASSY	1	1			
	4UC-82590-10	WIRE HARNESS ASSY			1	1	
11	5CG-82151-00	.FUSE (4A-BL)	2	2	2	2	
12	1AE-82151-00	.FUSE (30A-BL)	2	2			
13	1NL-82151-00	.FUSE (5A-BL)	2	2			
14	90464-15195	CLAMP		1	1	1	
15	90464-13073	CLAMP	3	3	3	3	
16	341-82594-00	CLAMP	1	1	1	1	
17	90464-15195	CLAMP	3	3			
18	3LD-82568-50	SWITCH, SIDE STAND	1	1	1	1	
19	90157-05079	SCREW, PAN HEAD	2	2	2	2	
20	4UC-82501-11	MAIN SWITCH STEERING LOCK	1	1	1	1	
21	4UC-82552-10	.CAP, SWITCH	1	1	1	1	
22	90109-088A7	BOLT	2	2	2	2	
23	4HC-81950-00	RELAY ASSY	1	1	1	1	
24	4HC-81860-00	SWITCH ASSY	1	1	1	1	

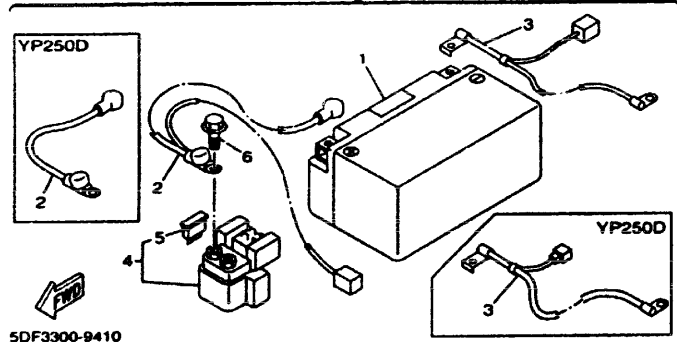
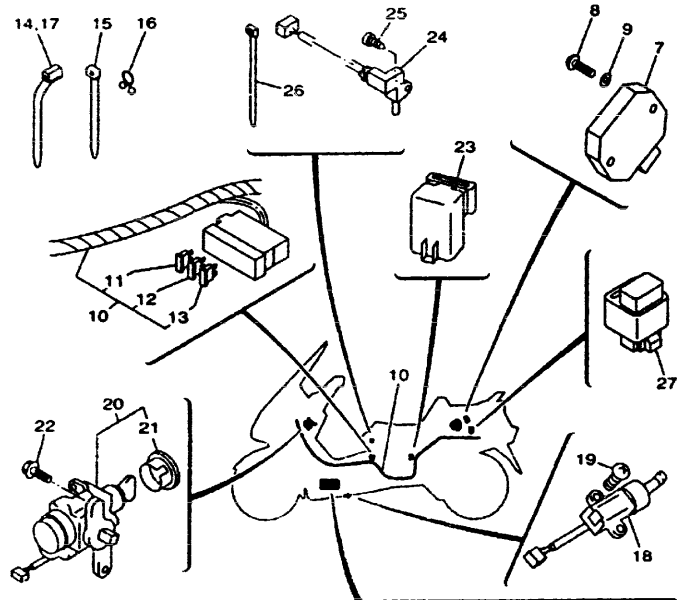
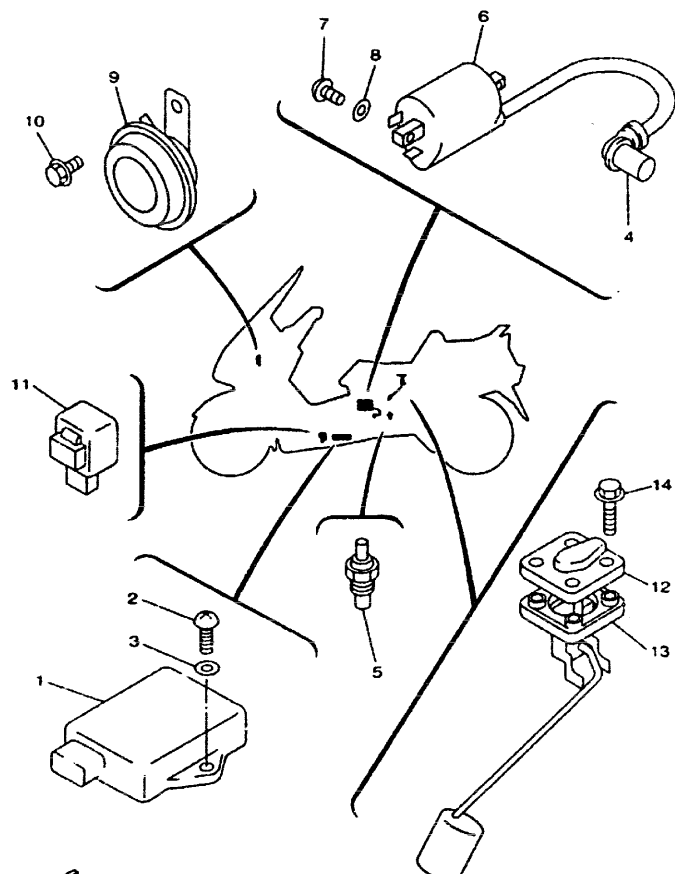


FIG. 41 ELECTRICAL 1

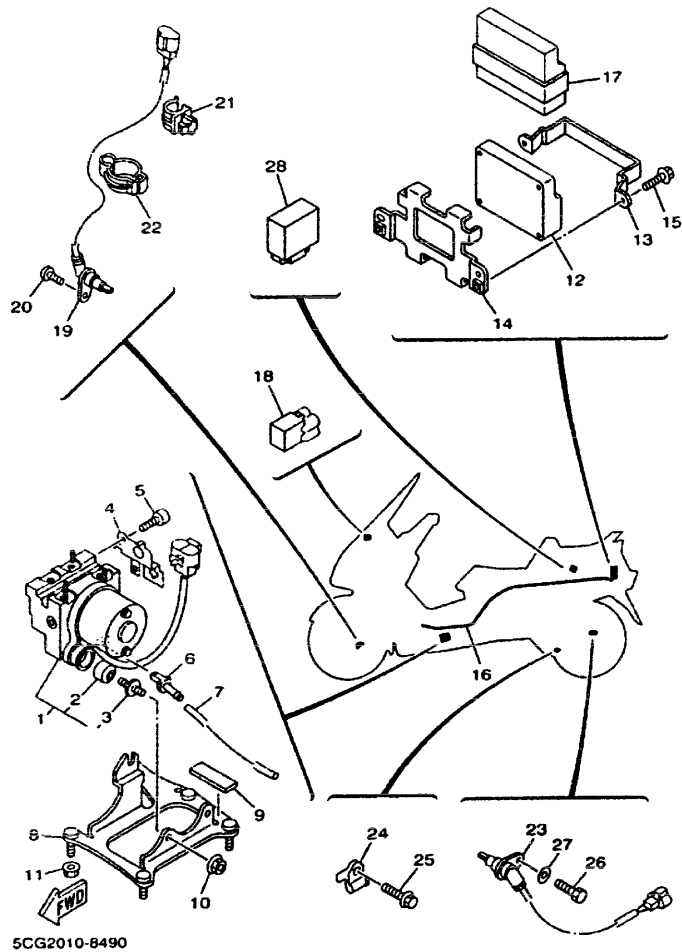
REF. NO.	PART NO.	DESCRIPTION	SDF3	SDF4	SDF5	SDF6	REMARKS
25	98907-03008	SCREW, BIND	1	1	1	1	
26	5Y9-12491-00	CLAMP 1	1	1	1	1	
27	4U8-81950-02	RELAY ASSY	1	1			
<hr/>							
<hr/>							
<hr/>							
<hr/>							
<hr/>							
<hr/>							
<hr/>							
<hr/>							




4UC2300-7380

FIG. 42 ELECTRICAL 2

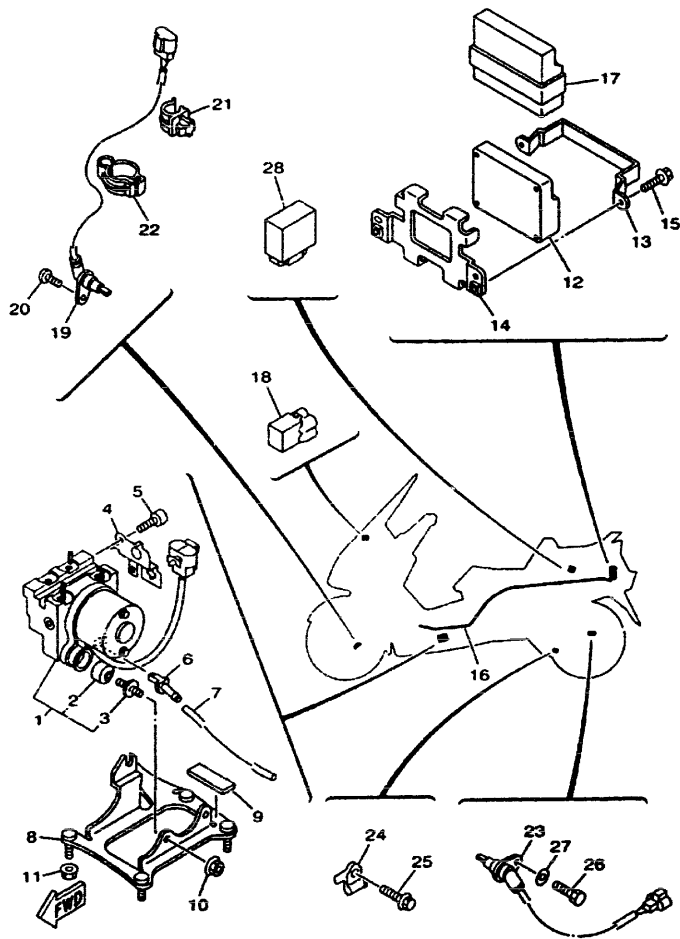
REF. NO.	PART NO.	DESCRIPTION	SDF3	SDF4	SDF5	SDF6	REMARKS
1	5DF-82305-10	IGNITOR UNIT ASSY	1	1			
	4UC-82305-10	IGNITOR UNIT ASSY			1	1	
2	98507-06020	SCREW, PAN HEAD	1	1	1	1	
3	92907-06600	WASHER, PLATE	1	1	1	1	
4	4BP-82370-00	PLUG CAP ASSY	1	1	1	1	
5	11H-83591-00	THERMO UNIT	1	1	1	1	
6	4HC-82310-00	IGNITION COIL ASSY	1	1	1	1	
7	98507-05016	SCREW, PAN HEAD	2	2	2	2	
8	92907-05600	WASHER, PLATE	2	2	2	2	
9	3TB-83371-01	HORN	1	1	1	1	
10	95807-06010	BOLT, FLANGE	1	1	1	1	
11	3GM-83350-01	FLASHER RELAY ASSY	1	1	1	1	
12	4HC-85752-00	SENDER UNIT ASSY, FUEL METER	1	1	1	1	
13	5G3-85753-00	GASKET, SENDER UNIT	1	1	1	1	
14	90119-05071	BOLT, WITH WASHER	4	4	4	4	



SCG2010-8490

FIG. 43 ELECTRICAL 3

REF. NO.	PART NO.	DESCRIPTION	SDF3	SDF4	SDF5	SDF6	REMARKS
1	SCG-85930-00	HYDRAULIC UNIT ASSY	1	1			
2	SCG-85113-00	DAMPER	1	1			
3	SCG-2535E-00	BOLT	1	1			
4	SCG-25875-00	HOLDER, BRAKE HOSE 1	1	1			
5	91318-05012	BOLT	1	1			
6	SCG-24196-00	PLUG, DRAIN	1	1			
7	90445-10144	HOSE	1	1			
8	SCG-2175T-00	BRACKET 1	1	1			
9	SCG-21852-00	DAMPER	1	1			
10	95707-08500	NUT, FLANGE	3	3			
11	95607-08200	NUT, SELF-LOCKING	1	1			
12	SCG-85940-00	ELECTRONIC CONTROL UNIT ASSY	1	1			
13	SCG-2472F-00	SUPPORT, TAIL COVER	1	1			
14	SCG-2139T-00	BRACKET, COVER	1	1			
15	95807-06012	BOLT, FLANGE	4	4			
16	SCG-85950-00	WIRE HARNESS ASSY	1	1			
17	SCG-8552E-00	COVER, CASE	1	1			
18	3YA-82378-00	CONNECTOR	1	1			
19	SCG-85970-00	WHEEL SENSOR ASSY, FRONT	1	1			
20	92014-08016	BOLT, BUTTON HEAD	1	1			
21	90464-08051	CLAMP	1	1			
22	90465-14310	CLAMP	3	3			
23	SCG-85980-00	WHEEL SENSOR ASSY, REAR	1	1			
24	SCG-86159-00	HOLDER, WIRE	3	3			
25	95027-06014	BOLT, FLANGE	1	1			
26	91317-08020	BOLT	1	1			
27	92907-08600	WASHER, PLATE	1	1			



5CG2010-8490

FIG. 43 ELECTRICAL 3

REF. NO.	PART NO.	DESCRIPTION	SDF3	SDF4	SDF5	SDF6	REMARKS
28	3YA-81950-00	RELAY ASSY	1	1			

NUMERICAL INDEX

PARTNO.	GRID NO.	PARTNO.	GRID NO.	PARTNO.	GRID NO.	PARTNO.	GRID NO.	PARTNO.	GRID NO.	PARTNO.	GRID NO.
1JL-W0041-01	D-9	2NX-12159-00	B-4	4UD-14301-03	B-11	4HC-15337-00	B-15	5CG-2139T-00	E-14	4HC-21671-00	C-9
5CG-W0041-A0	D-9	4HC-12170-00	B-5	4JP-14323-00	B-11	4HC-15338-00	B-15	22F-2139X-00	C-6	1AA-21674-00	C-9
5CG-W0041-00	D-11	4HC-12176-00	B-5	4HC-14340-00	B-12	4HC-15351-00	B-9			4HC-2197J-10	C-11
59X-W0041-00	D-11	2UJ-12210-01	B-5	4UC-14341-00	B-12	2T4-15363-00	B-14	4HC-21398-A0	C-15	5CG-22190-00	C-10
4HM-W0045-00	D-5	4RF-12213-00	B-5	4UC-14341-10	B-12	4HC-15363-00	B-15	4HC-21398-00	C-15	5CG-22210-00	C-10
5CG-W0046-02	D-7	4HC-12231-00	B-5	38V-14342-22	B-12	4HC-15378-00	B-14	5CG-21420-00	C-6	5CG-22216-00	B-14
4ES-W0047-10	D-7	4HC-12241-00	B-5	50M-14343-65	B-12	4HC-15407-00	B-15	4HC-21480-00	C-6		C-10
4FU-W0047-50	D-5	4HC-12405-01	B-7	50M-14355-00	B-12	4HC-15411-00	B-15	4HC-21511-00-P4	C-7	4HC-23100-30	C-11
51L-W0048-00	D-5	4HC-12411-00	B-7	2WJ-14367-00	B-12	4HC-15417-01	B-15	4HC-21511-00-P5	C-7	4HC-23110-20	C-11
		4HC-12413-00	B-7	4KL-14384-00	B-11	4HC-15421-00	B-14	4HC-21511-00-P8	C-7	4HC-23111-00	C-11
4FU-W0057-50	D-5	4HC-12421-00	B-6	25N-14385-00	B-11	4HC-15431-00	B-15	4HC-21511-00-4B	C-7	3J2-23114-00	C-11
4TT-W0057-00	D-7	4HC-12422-01	B-6	4KL-14386-00	B-11	4HC-15451-00	B-15	1AB-21518-00	C-7	4HC-23125-20	C-11
5CG-W2533-A0-35	D-6	4HC-12426-00	B-6	4HC-14390-01	B-11	4HC-15453-00	B-15	3VP-21535-00	D-15	4HC-23126-30	C-11
4HC-Y2171-60-P4	C-8	4HC-12428-10	B-6	4HC-14397-00	B-12	4HC-15461-00	B-14	4HC-21552-00	C-7	4HC-23136-30	C-11
4HC-Y2171-60-P5	C-8	11H-12438-00	B-6	4KL-14397-00	B-11	4HC-15471-00	B-15	5DF-2157B-00	E-2	4HC-23141-10	C-11
4HC-Y2171-80-4B	C-8	4HC-12446-00	B-6	5H0-14397-00	B-11	4HC-15472-00	B-15	4HC-21629-00	C-15	2UJ-23144-00	C-11
4HC-Y2171-90-P8	C-8	5CG-12450-00	B-6	4KL-14404-00	B-11	3KJ-15481-00	B-15	4BH-21708-11	D-14	2UJ-23145-00	C-11
4HC-11101-00	B-2	4HC-12459-00	B-6	4HC-14411-00	B-10	4HC-15491-00	B-15			22W-23146-10	C-11
4GA-1111F-00	B-5	4UC-12461-00	B-7	4HC-14412-00	B-10	4HC-15492-00	B-14	JHC-2171L-A0-P4	C-8	22W-23153-L0	C-11
4GO-11133-10	B-2	4HC-12462-09	B-7	4HC-14429-00	B-11	4HC-15499-00	B-15	4HC-2171L-A0-P6	C-8	509-23159-L0	C-11
4KB-11145-00	B-5	4HC-12476-00	B-7	4HC-14437-00	B-10	4HC-15512-00	C-2	4HC-2171L-A0-P9	C-8	4HC-23170-10	C-11
4HC-11160-00	B-2	4HC-12481-00	B-7	4HC-14451-00	B-10	4HC-15517-00	C-2	4HC-2171L-A0-PG	C-8	4HC-23173-20	C-11
4HC-11166-00	B-2	4HC-12482-00	B-7	4HC-14452-00	B-10	2HT-15521-00	C-2	4HC-2171M-A0-P4	C-8	278-23181-50	C-11
4HC-11181-00	B-2	4HC-12483-00	B-7	4HC-14453-00	B-10	4HC-15590-00	C-2	4HC-2171M-A0-P6	C-8	3G2-23183-00	C-11
3GC-11186-00	B-2	4HC-12484-00	B-7	4HC-14472-00	B-10	4HC-16111-00	C-5	4HC-2171M-A0-P9	C-8	4HC-23184-10	C-11
3GC-11187-00	B-2	4HC-12485-00	B-7	4KL-14536-00	B-11	4HC-16151-01	C-5	4HC-2171M-A0-9G	C-8	5CG-23317-00	C-12
4HC-11311-00	B-2	5Y9-12491-00	E-12	4HC-14555-00	B-11	1XX-16611-03	C-3	4HC-2171N-A0-P4	C-9	4HC-23340-10	C-11
4HC-11351-00	B-2	4HC-12576-00	B-7	4HC-14592-00	B-11	5CG-16620-00	C-3	4HC-2171N-A0-P6	C-9	5CG-2341B-00	C-11
4HC-11400-00	B-3	4HC-12577-00	B-7	5DF-14610-00	B-13	2YM-16626-00	C-3	4HC-2171N-A0-P9	C-9	22F-23411-01	C-11
4HC-11603-00	B-3	4HC-12591-00	B-7	3MT-14613-00	B-13	5CG-17211-00	C-5	4HC-2171N-A0-9G	C-9	22F-23412-01	C-11
4HC-11605-00	B-3	4HC-13300-00	B-9	5CG-14708-00	B-13	5CG-17411-00	C-5	4HC-21721-10	C-8	3VP-23416-00	C-12
4HC-11607-00	B-3	4HC-13325-00	B-9	5CG-14711-01	B-13	5CG-17421-00	C-5	5CG-2173B-00	C-8	3YF-23416-00	C-12
4HC-11631-00-97	B-3	51Y-13411-00	B-9	4BH-14714-00	B-13	4HC-17611-0J	C-3	11H-21747-00	C-6	4H7-23441-00-98	C-12
4JH-11633-00	B-3	4HC-13475-00	B-9	5CG-14738-00	B-13	5CG-17620-00	C-3	5CG-21747-00	D-13	4HC-23442-10	C-12
4HC-11636-00	B-3	4HC-13586-10	B-10	4BD-14766-00	B-13	4HC-17623-00	C-3	5CG-2175T-00	E-14	164-23462-00	C-11
4HC-11638-00	B-3	4HC-13595-00	B-10	4KL-14766-00	B-13	4UC-17632-00	C-3	4JP-21753-00	C-13	4HC-24110-00	C-13
5H0-12111-01	B-4	4HC-13910-10	C-13	5CG-14799-00	B-13	5CG-17639-00	C-3	4HC-2177A-00	D-13	4HC-2414A-00	C-13
4HC-12113-00	B-4	4HC-13929-10	B-10	4HC-1490A-00	B-11	5CG-17641-00	C-3	5CG-2177A-00	D-13	25H-24180-00	C-13
4HC-12114-00	B-4	4UC-1410A-00	S-11	4HC-1490H-01	B-11	4HC-17653-00	C-3	4HC-2177F-00	C-15	22F-24181-00	D-14
4GO-12116-01	B-4	4HC-14103-00	B-11	4UC-1490J-00	B-12	4HC-17654-00	C-3	4HC-21778-01	C-9	5CG-24196-00	E-14
4GO-12117-00	B-4	4HC-14105-00	B-11	4HC-14958-00	B-11	4HC-17680-00	C-3	4HC-21779-01	C-9	4HC-24217-00	C-14
4GO-12118-00	B-4	4UD-14105-00	B-11	4KL-14958-01	B-11	4CW-17664-00	C-3	5CG-21781-01	C-8	4HC-24311-00	C-13
5H0-12119-00	B-4	4HC-14196-00	B-12	5CG-15100-00	B-14	4HC-17670-10	C-3	5DF-21782-00	C-8	4HC-24312-00	C-13
5H0-12121-01	B-4	4HC-14197-00	B-12	5CG-15100-10	B-14	4HC-17684-00	C-3	4HC-21796-00	D-15	4HC-24313-01	C-13
5H0-12145-00	B-4	4JP-14243-00	B-11	36Y-15189-00	B-15	5CG-21110-A0	C-6	1AA-21815-00	C-9	4HC-24318-00	C-13
36X-12151-00	B-4	4HC-14286-00	B-12	4HC-15316-00	B-15	5CG-21110-01	C-6	4HC-21816-00	C-9	4HC-24366-00	C-13
3Y1-12156-00	B-4	4HC-14294-00	B-10	4HC-15326-00	B-15	4HC-2117G-00	C-6	4HC-21817-00	C-9	214-24535-00	B-11
4HC-12157-00	B-5	4UC-14301-03	B-11	4HC-15335-00	B-15	5CG-21279-00	C-7	5CG-21852-00	E-14	1FK-24560-00	C-13



NUMERICAL INDEX

PARTNO.	GRID NO.	PARTNO.	GRID NO.	PARTNO.	GRID NO.	PARTNO.	GRID NO.	PARTNO.	GRID NO.	PARTNO.	GRID NO.
54K-24602-00	C-13	5CG-2583T-B0	D-9	4HC-2637H-00	D-10	4HC-81815-00	E-4	5CG-83500-30	E-6	4HC-84743-00	E-9
5CG-2470F-B0	C-14	5CG-2583T-00	D-11	5HO-26393-00	D-8	3WP-81826-00	E-4	5CG-83500-50	E-6	4HC-84744-00	E-9
5CG-2472F-00	E-14	5CG-2583T-10	D-11	4HC-27111-00	D-13	3KS-81840-00	E-4	4HC-83509-00	E-7	4HC-84760-00	C-15
4HC-24723-00	C-15	5CG-2584A-A0	D-9	4HC-27112-00	D-13	11H-81844-00	E-4	5CG-83509-00	E-6	5CG-85113-00	E-14
4HC-2473F-20	C-14	5CG-2584A-00	D-11	5HK-27112-02	D-13	1FK-81847-00	E-4	5CG-83510-00	E-7	3Y6-85130-02	E-9
4HC-2473R-A0	C-14	5CG-2584B-00	D-9	4HC-27114-00	D-13	4HC-81860-00	E-11	5CG-83510-20	E-7	5CG-8552E-00	E-14
4HC-2473T-20	C-14	5CG-2584C-00	D-9	4HC-27311-01	D-13	4FL-81940-00	E-11	5CG-83510-30	E-6	5CG-85750-00	E-6
5DF-24730-B0	C-14	5CG-25844-00	D-9	4HC-27314-00	C-6	3YA-81950-00	E-15	5CG-83510-50	E-6		E-7
4HC-24738-00	C-15		D-10	4HC-27415-00	D-13	4HC-81950-00	E-11	4HC-83511-00	E-6	4HC-85752-00	E-13
1T4-24741-00	C-14		D-12	4HC-27433-00	D-14	4U8-81950-02	E-12		E-7	5G3-85753-00	E-13
	C-15	2KF-25852-01	D-11	4HC-27444-00	D-14	4HM-81960-01	E-11	1YT-83517-00	E-6	5CG-85930-00	E-14
4HC-2475M-00	C-14	3RW-25852-00	D-9	4HC-27452-01	C-6	4UC-82100-01	E-11		E-7	5CG-85940-00	E-14
4HC-24754-10	C-14		D-11	4HC-27453-10	D-14	4HC-82115-00	E-11	4R0-83517-00	E-6	5CG-85950-00	E-14
4HC-24759-00	C-14	3RW-25854-00	D-9	4HC-27462-01	C-6	5CG-82115-00	E-11		E-7	5CG-85970-00	E-14
4HC-2476U-00	C-15		D-11	4HC-27463-10	D-14	4HC-82116-00	E-11	3SX-8352K-00	E-6	5CG-85980-00	E-14
4HC-2476V-00	C-6	55U-25854-00	D-11	4HC-27475-10	D-14	5CG-82116-00	E-11		E-7	5CG-86159-00	E-14
4UC-2477A-B0	C-14	4L0-25862-01	D-9	4HC-27481-B0	D-13	1AE-82151-00	E-11	4HC-8353H-00	E-7	90101-10303	B-5
4HC-2477F-10	C-14		D-11	4HC-27483-10	D-14	1NL-82151-00	E-11	5CG-8353H-00	E-6	90105-10638	D-5
4HC-24773-A0-P3	C-15	5CG-25862-00	D-9	4HC-27484-10	D-14	2GH-82151-00	E-11	4HC-83550-00	E-7		D-7
4HC-24773-A0-P5	C-15	3RW-25867-00	D-9	4HC-27485-00	D-14	5CG-82151-00	E-11	5CG-83590-00	E-6	90105-10716	C-7
4HC-24773-A0-P8	C-15		D-11	5CG-28100-00	D-2	4UC-82305-10	E-13		E-7	90109-060F3	C-6
4HC-24773-A0-4B	C-15	56A-25867-00	D-11	3TB-28217-00	C-6	5DF-82305-10	E-13	11H-83591-00	E-13	90109-063F1	C-7
4HC-2478A-20	D-15	5CG-25872-00	D-11	5CG-28300-10	D-15	4HC-82310-00	E-13	5CG-83612-00	E-6		C-8
4HC-2478E-00	C-15	5CG-25874-00	D-9	4HC-28345-00-7B	E-2	4BP-82370-00	E-13		E-7		C-9
4HC-2478G-00	C-15	3EN-25875-01	C-10	1NL-28347-01	E-2	3YA-82378-00	E-14	4HC-83740-00	E-6		D-15
4JP-24780-02	C-15	4HC-25875-01	C-12	4HC-28351-01-P4	D-15	4UC-82501-11	E-11		E-7	90109-063F5	C-14
4UC-24790-B0	C-14	5CG-25875-00	E-14	4HC-28351-01-P5	D-15	4UC-82552-10	E-11	5CG-83912-10	E-10	90109-06577	E-10
5CG-25160-A0-35	D-3	4HC-25876-00	D-9	4HC-28351-01-P8	D-15	4HC-82560-00	B-8	5CG-83922-00	E-10	90109-066A7	E-11
4HC-25168-00-35	D-4		D-11	4HC-28351-01-4B	C-15	4UC-82560-00	B-8	4UC-83963-01	E-10	90109-067E6	B-10
5CG-2517A-00	D-3	5CG-25886-00	D-11	4HC-28356-01	C-6	3LD-82566-50	E-11	4HC-83964-00	E-6	90109-083G4	D-5
4HC-25181-00	D-3	4TT-25914-00	D-7	4HC-2836K-10	D-15	4UC-82590-10	E-11		E-7		D-7
	D-4	4BP-25919-00	D-5	4HC-2836L-10	E-2	5DF-82590-00	E-11	4HC-83972-01	E-10	90109-10473	D-13
4HC-25190-00	D-4	4TT-25919-00	D-7	4HC-2836T-00	D-15	341-82594-00	E-11	4FU-83980-00	E-10	90110-05253	E-3
5CG-25338-00-35	D-6	3YX-25929-00	D-5	4HC-28365-10	D-15	3XW-83310-10	E-5	5CG-83980-00	E-10	90110-06200	C-14
5CG-2535E-00	C-14	3YX-25937-00	D-5	4HC-2837G-00	E-6	2AE-83311-00	E-9	5CG-83980-10	E-10	90116-08591	B-14
29L-25398-00	D-3	4TT-25937-00	D-7		E-7	3XW-83312-00	E-5	4UC-84312-00	E-8	90119-05071	E-13
	D-4	5R2-25937-00	D-5	5CG-2837U-00	E-2	3XW-83313-00	E-5	8G9-84314-00	E-8	90119-06060	C-8
29L-25398-10	D-3	5CG-26110-00	D-8	4HC-28371-11	D-15	4HC-83313-00	E-9	4UC-84320-00	E-8		D-13
	D-4	5CG-26143-00	D-8	4EJ-28376-00	E-2	3XW-83320-10	E-5	4UC-84320-10	E-8		D-15
29L-25398-20	D-3	5CG-26144-00	D-8	4HC-28385-A0-P4	E-2	3XW-83322-00	E-5	4HC-84347-00	C-15	90119-06117	C-9
	D-4	4YR-26240-00	D-8	4HC-28385-A0-P6	E-2	32H-83331-00	E-5	4SV-84347-00	E-8	90119-06118	B-8
5CG-2580U-00	D-5	4YR-26241-01	D-8	4HC-28385-A0-P9	E-2	4HC-83332-00	E-9	4SV-84397-00	E-8	90119-06191	C-15
5CG-2580W-C2	D-7	33M-26246-00	D-8	4HC-28385-A0-9G	E-2	4HC-83342-00	E-9	4HC-84545-00	E-9	90143-06024	E-10
4HC-2582T-00	D-5	5CG-26280-00	D-8	4HC-81410-10	E-3	4HC-83343-00	E-9	4HC-84704-00	E-9	90150-05024	E-2
5CG-2582W-00	D-7	5CG-26290-00	D-8	4HC-81450-00	E-3	3GM-83350-01	E-13	4HC-84710-00	E-9	90153-06029	B-2
5CG-2582B-B0	D-7	4HC-26311-02	D-8	5CG-81677-00	D-9	3TB-83371-01	E-13	31L-84714-00	E-9	90154-06014	C-7
5CG-2582B-C0	D-7	4HC-26312-02	D-8	5CG-81678-00	D-9	5CG-83500-00	E-7	4HC-84721-00	E-9	90157-04088	C-3
5CG-2583T-A0	D-9	4HC-2637G-00	D-8	4HC-81800-00	E-4	5CG-83500-20	E-7	4HC-84735-00	E-9	90157-05079	E-11



NUMERICAL INDEX

PARTNO.	GRID NO.	PARTNO.	GRID NO.	PARTNO.	GRID NO.	PARTNO.	GRID NO.	PARTNO.	GRID NO.	PARTNO.	GRID NO.	PARTNO.	GRID NO.
90159-03102	E-6	90201-08609	B-2	90430-06014	B-6	90501-18576	B-9	93210-16325	B-15	95027-06070	B-14	95027-06100	B-14
	E-7	90201-10118	D-9	90430-08119	B-14	90501-505J6	C-3	93210-19123	B-15	95027-06120	B-2	95027-06040	B-14
90159-05028	D-8		D-10	90445-09012	D-13	90506-18224	D-13	93210-33133	B-6		C-11		
90159-06093	B-7		D-11	90445-092K3	C-13	90506-20158	D-13	93210-35520	B-9	95607-06100	E-10		
90163-05006	D-13	90201-105A2	C-6	90445-10144	E-14	90506-26225	D-13	93210-35537	B-10	95607-06200	D-14		
	D-15		C-10	90445-135J8	B-14	90506-40175	D-13	93210-43713	C-3	95607-08200	E-14		
90167-04021	E-7		C-10	90446-11303	B-10	90506-40175	D-13	93210-57634	B-2	95607-08520	B-2		
90167-04045	C-15	90201-10591	B-5	90460-15126	D-11	91317-05012	E-3	93210-92448	B-2	95707-05600	E-9		
90167-05079	C-8	90201-12166	C-2	90460-27219	B-7	91317-06014	B-5	93211-17733	C-3	95707-06500	B-10		
	C-9	90201-144M8	C-3	90460-56105	B-10		B-14	93306-00906	B-6		C-15		
	C-14	90201-150J4	C-10	90461-15100	C-13	91317-08016	B-2	93306-00518	B-5		C-15		
	D-8	90201-156R4	C-5	90462-08128	B-7	91317-08020	B-7	93306-20204	B-5		C-15		
	D-14	90201-160F6	B-3	90464-05141	E-10		D-9	93306-20570	C-5	95807-06010	E-14		
	D-15	90201-16242	B-14	90464-07078	C-6	91317-06025	D-11	93306-27205	C-5		C-6		
	E-2	90201-220J8	D-6	90464-08051	E-14		B-6	93306-30201	C-5	95807-06012	E-13		
90167-05080	D-8	90201-232K5	C-5	90464-13073	E-11	91317-08035	B-6	93306-30202	C-2		C-6		
	D-13	90202-26142	C-12	90464-13103	B-7	91317-08020	E-14		E-14		C-6		
	D-15	90206-10036	C-14		B-10	91317-08030	C-12	93306-30212	C-12		C-12		
90170-06010	E-10	90209-05347	C-8	90464-15195	D-8	91318-05012	E-14	93306-30302	E-14		D-11		
90170-06128	B-4		C-9		E-11	91380-06014	B-13	93311-41566	C-5		E-14		
90170-16425	B-3	90215-06184	B-5	90464-16061	E-10	92014-08013	E-14	93399-99942	C-11	95807-06014	E-9		
90170-20386	C-12	90240-05047	C-14	90464-20258	D-8	92017-06025	B-9	93430-12008	D-13	95807-06020	C-15		
90170-36279	C-4	90269-07076	C-14	90464-23199	D-8	92902-03100	E-6	93440-10085	B-2		D-9		
90176-08026	B-2		C-15	90465-13152	D-11	92902-03600	E-6	93503-16003	C-11		D-11		
90179-05523	D-15	90280-03017	C-12	90465-14310	E-14	92902-05100	E-9	93603-12221	B-9		E-8		
90179-14489	C-3	90280-05013	B-3	90467-08003	C-9	92907-05600	C-13	93603-22028	B-6	95807-06025	C-10		
90179-25615	C-11	90338-08174	B-10	90467-09006	B-10		E-13		H-9	95807-08016	C-6		
90183-05042	C-8	90338-11125	C-15		C-13	92907-06600	D-13	93604-10011	B-5	95817-06025	C-15		
	C-9	90387-064T3	B-15		D-13		E-14	93900-00022	D-3		E-4		
	C-14	90387-064W3	B-10	90467-10098	B-10	92907-08600	E-14		D-4	95817-08016	B-14		
	D-8	90387-066R8	C-14		C-9	92990-06200	B-13	93900-00025	D-6	95817-10030	B-13		
	D-13	90387-06648	D-14	90467-10035	B-7	93101-10090	B-6	94111-1205A	D-3	95817-10045	C-6		
	D-15	90387-0700D	E-9	90467-12053	C-13	93101-14092	B-15		D-4	95817-10050	B-13		
	E-2	90387-0714B	B-8	90467-13064	B-2	93101-28139	C-3		D-3	95817-12120	C-6		
	E-9	90387-1006J	B-14	90467-22100	B-7	93102-22014	D-3	94111-1207B	D-3	95827-06012	C-13		
	B-13	90387-1508E	D-3	90467-23177	B-7		D-4		D-4	95827-06014	B-13		
90185-06189	D-13		D-4	90467-26131	B-7	93102-25299	C-5	94113-1297N	D-6	95827-08030	C-10		
90185-10110	D-13		D-3	90468-02078	C-13	93102-30284	B-14	94113-1207P	D-6	95827-08070	C-10		
90185-10154	C-6	90387-151R0	D-4	90468-12007	C-14	93102-32298	C-5	94581-63104	B-5	95827-10035	C-10		
90185-12072	C-6		D-4	90468-12069	B-3	93104-41119	C-3	94701-00333	B-2	97007-05012	B-7		
90185-14163	D-3	90387-1514G	B-14	90468-18121	C-15	93106-26005	C-10	95024-06010	B-7	97007-06012	B-5		
90185-14166	D-4	90387-153N7	D-3	90480-01288	C-9	93109-28043	C-10	95027-06008	E-11		D-15		
	D-3	90387-153N8	C-10	90480-13018	C-13	93210-05187	C-14	95027-06012	C-13	97702-40116	E-9		
	D-4	90387-15423	C-10	90480-13598	B-10	93210-09165	B-4	95027-06014	D-10	97706-40116	E-9		
90201-047R9	C-3	90387-1906E	C-3	90480-16501	B-8	93210-14104	B-14		E-14	97707-04108	C-14		
90201-06008	D-15	90401-10159	D-9	90480-18276	B-7	93210-15171	B-5	95027-06030	D-8	97707-30512	E-6		
90201-06055	B-13		D-10	90501-10312	E-10	93210-16275	B-6	95027-06035	B-6		E-7		
90201-064J1	C-15		D-11	90501-106J4	B-7		B-14	95027-06040	B-15				
90201-08512	B-8	90430-06014	B-2										
	B-9												

NUMERICAL INDEX

PARTNO.	GRID NO.	PARTNO.	GRID NO.	PARTNO.	GRID NO.	PARTNO.	GRID NO.	PARTNO.	GRID NO.
97707-40014	E - 6								
	E - 7								
97707-40016	E - 6								
	E - 7								
97707-40120	E - 5								
97707-40512	D - 15								
97707-50016	E - 5								
	E - 6								
	E - 7								
97707-50125	B - 10								
97801-05010	B - 11								
98501-04012	B - 11								
98507-05008	D - 8								
98507-05010	C - 15								
98507-05012	C - 13								
98507-05016	E - 13								
98507-05035	E - 10								
98507-05040	E - 10								
98507-05045	E - 10								
98507-06020	B - 15								
	E - 13								
98507-06025	E - 11								
98580-03020	E - 6								
98706-04012	D - 9								
	D - 11								
98901-04006	B - 11								
98907-03008	E - 12								
99001-04600	D - 13								
99001-06600	B - 9								
99001-07600	B - 6								
99001-08600	C - 3								
99009-10400	B - 6								
99009-12400	C - 2								
99009-16400	B - 14								
99009-25400	C - 5								
99236-00060	C - 8								
99237-00080	C - 6								
99510-10114	B - 2								
99530-10114	B - 14								
	B - 15								
99530-14016	B - 2								