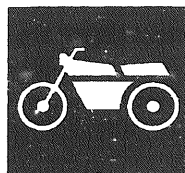


CONTENTS

CYLINDER	B2
CRANKSHAFT & PISTON	B3
VALVE	B4
CAMSHAFT & CHAIN	B5
WATER PUMP	B6
RADIATOR & HOSE	B7
OIL PUMP	B9
INTAKE	B10
CARBURETOR	B11
EXHAUST	B13
CRANKCASE	B15
CRANKCASE COVER 1	C3
STARTER	C5
CLUTCH	C6
TRANSMISSION	C8
FRAME	C9
FENDER	C11
SIDE COVER	C12
REAR ARM & SUSPENSION	C13
FRONK FORK	C14
FUEL TANK	D2
SEAT	D4
FRONT WHEEL	D6
FRONT BRAKE CALIPER	D7
REAR WHEEL	D8
REAR BRAKE CALIPER	D9
STEERING HANDLE & CABLE	D10
FRONT MASTER CYLINDER	D12
STAND & FOOTREST	D14
LEG SHIELD	E2
GENERATOR	E4
STARTING MOTOR	E5
FLASHER LIGHT	E6
METER	E7

HEADLIGHT	E8
TAILLIGHT	E9
HANDLE SWITCH & LEVER	E10
ELECTRICAL 1	E11
ELECTRICAL 2	E12

NUMERICAL INDEX	M1
-----------------------	----



PARTS CATALOGUE

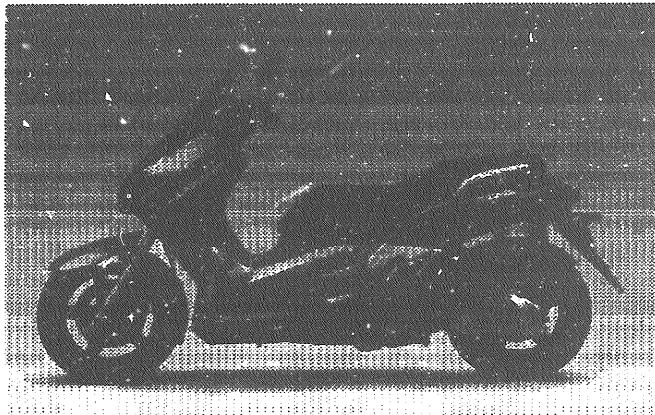
YP250R'05 (1C01)
(XMAX) EUROPE

YAMAHA
GENUINE
Parts & Accessories

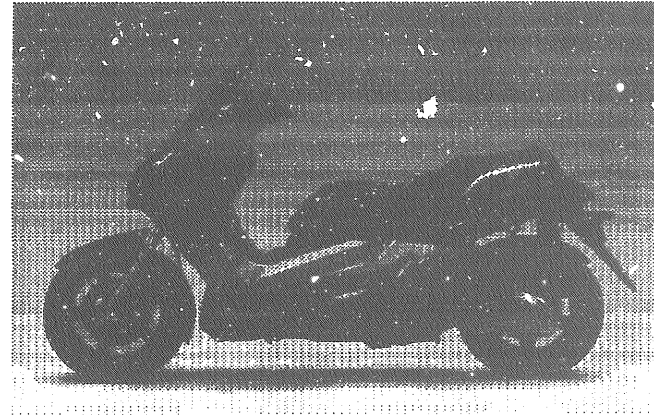
2D1C0 - 300E1

A2

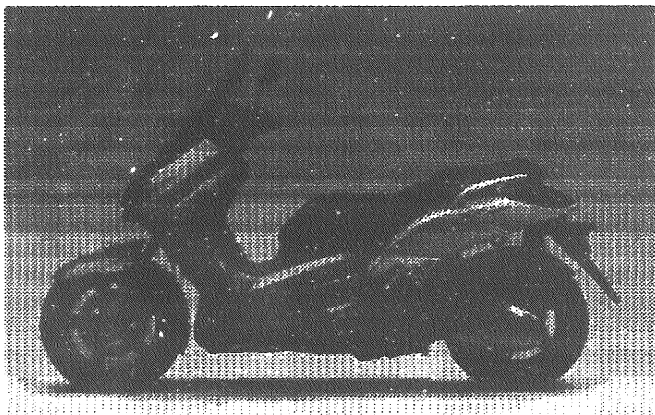
**YP250R'05 (1C01) XMAX
PARTS CATALOGUE
©2005 by Yamaha Motor España S.A.
1st Edition, April 2005
All rights reserved.
Any reprinting or unauthorized use
without the written permission of
Yamaha Motor España S.A.
is expressly prohibited.**



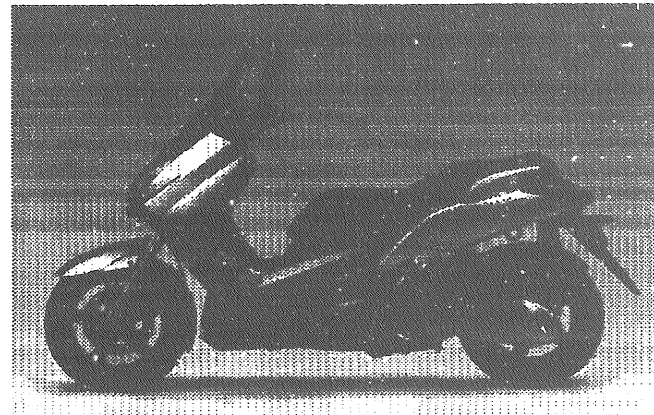
DARK BLUISH GRAY METALLIC, 8



RED METALLIC, 5



DULL YELLOW METALLIC, 8



SILVER, 3

FOREWORD

This Parts Catalogue is related to the parts for the model(s) in the below frame. When you are ordering replacement parts, please refer to this Parts Catalogue and quote both part numbers and part names correctly.

YP250R'05 (1C01) XMAX

1. Modifications or additions which have been after issue of the Parts Catalogue will be announced in the Yamaha Parts News. It is advisable that you make necessary corrections to the Parts Catalogue according to the Yamaha Parts News.
2. Abbreviations
The following abbreviations are used in this Parts Catalogue:
 - "UR" Use specified parts number
 - "UN" Use as many as needed
 - "AP" Alternate Parts
 - "LM" Local Made (Parts need to be ordered locally)
 - "F#" Frame No. (Applicable machine No.)
3. Parts which are to be supplied in an assembly, are listed with a dot (•) in front of the part name as shown below.

EXAMPLE

CARBURETOR ASSY

- JET, pilot
- NOZZLE, main

4. Number of component for assembly.
The numeral appearing to the right of each component part indicates the quantity of parts for each assembly unit.

EXAMPLE

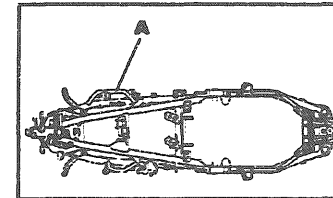
PART No.	DESCRIPTION	QTY.	REMARKS
2F5-83310-60	FRONT FLASHER LIGHT, ASSY	2	
115-83311-60	• BULB, (6V-18W)	1	

5. Applicable colors of graphics are represented in the "REMARKS" as shown below.

EXAMPLE

PART No.	DESCRIPTION	QTY	REMARKS
2N4-24110-00-X5	FUEL TANK COMP.	1	MAXIM RED
3J1-24240-10	• GRAFIC, FUEL TANK	1	for MXR

6. Applicable Serial No.
"A" Frame Serial No.

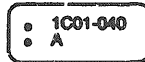


7. Note that the illustrations are for reference in finding parts numbers, not to be used for assembling. When assembling, please use the applicable service manual.
8. The asterisk (*) before a reference number indicates modification items after the first edition.

MODEL LABEL

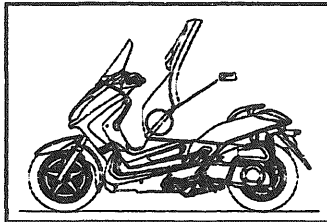
1. A label called "Model Label" is affixed in the location as indicated in (3) below. When using this parts catalogue, please be sure to cross refer the "Model code-Production code No." in the catalogue to the "Model code-production code No." indicated on the Model Label affixed onto the product concerned.

2. "Model Label" Indication



- a Model Type Code
- b Production Code No.
- c Colouring Type

3. Model Label Affixing Location



4. Model Code-Production Code Number of Model Listed in This Parts Catalog.

Model Code	Production Code No.	Country (destination)	Model Code	Production Code No.	Country (destination)
1C01	040	GREECE SLOVENIA TURKEY			
	060	NETHERLAND			
	070	UNITED KINGDOM			

5. Indication concernant la coloration.

Model code	Colouring type code	Colour code	Colour Name	Abbreviation
1C01	A	0980	DULL YELLOW METALLIC, 8	DYM8
	B	0791	SILVER, 3	S3
	C	0919	DARK BLUISH GRAY METALLIC, 8	DBNM8
	D	0979	RED METALLIC, 5	RM5

CONTENTS

CYLINDER	B2
CRANKSHAFT & PISTON	B3
VALVE	B4
CAMSHAFT & CHAIN	B5
WATER PUMP	B6
RADIATOR & HOSE	B7
OIL PUMP	B9
INTAKE	B10
CARBURETOR	B11
EXHAUST	B13
CRANKCASE	B15
CRANKCASE COVER 1	C3
STARTER	C5
CLUTCH	C6
TRANSMISSION	C8
FRAME	C9
FENDER	C11
SIDE COVER	C12
REAR ARM & SUSPENSION	C13
FRONT FORK	C14
FUEL TANK	D2
SEAT	D4
FRONT WHEEL	D6
FRONT BRAKE CALIPER	D7
REAR WHEEL	D8
REAR BRAKE CALIPER	D9
STEERING HANDLE & CABLE	D10
FRONT MASTER CYLINDER	D12
STAND & FOOTREST	D14
LEG SHIELD	E2
GENERATOR	E4
STARTING MOTOR	E5
FLASHER LIGHT	E6
METER	E7

HEADLIGHT	E8
TAILLIGHT	E9
HANDLE SWITCH & LEVER	E10
ELECTRICAL 1	E11
ELECTRICAL 2	E12

NUMERICAL INDEX	M1
-----------------------	----

CONTENTS

CYLINDER	B2
CRANKSHAFT & PISTON	B3
VALVE	B4
CAMSHAFT & CHAIN	B5
WATER PUMP	B6
RADIATOR & HOSE	B7
OIL PUMP	B9
INTAKE	B10
CARBURETOR	B11
EXHAUST	B13
CRANKCASE	B15
CRANKCASE COVER 1	C3
STARTER	C5
CLUTCH	C6
TRANSMISSION	C8
FRAME	C9
FENDER	C11
SIDE COVER	C12
REAR ARM & SUSPENSION	C13
FRONK FORK	C14
FUEL TANK	D2
SEAT	D4
FRONT WHEEL	D6
FRONT BRAKE CALIPER	D7
REAR WHEEL	D8
REAR BRAKE CALIPER	D9
STEERING HANDLE & CABLE	D10
FRONT MASTER CYLINDER	D12
STAND & FOOTREST	D14
LEG SHIELD	E2
GENERATOR	E4
STARTING MOTOR	E5
FLASHER LIGHT	E6
METER	E7

HEADLIGHT	E8
TAILLIGHT	E9
HANDLE SWITCH & LEVER	E10
ELECTRICAL 1	E11
ELECTRICAL 2	E12
NUMERICAL INDEX	M1

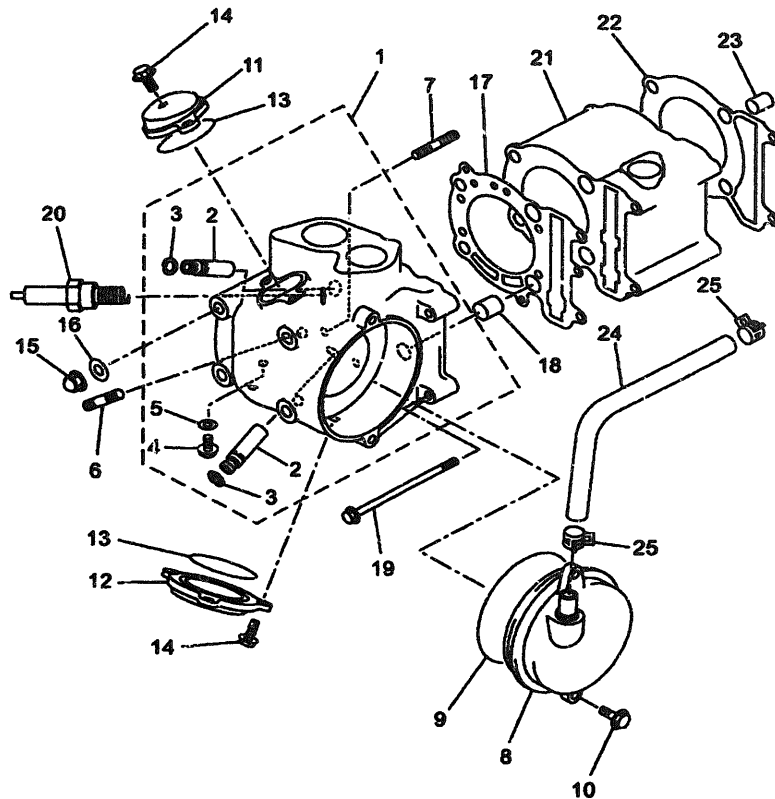


FIG. 1 CYLINDER

REF. NO.	PART NO.	DESCRIPTION	1001					REMARKS
1	5HW-E1101-00	CYLINDER HEAD ASSY	1					
2	4G0-11133-10	.GUIDE, VALVE 1	2					
3	93440-10085	.CIRCLIP	2					
4	90105-06X04	.BOLT, FLANGE	1					
5	90201-06X09	.WASHER, PLATE	1					
6	90116-08X03	BOLT, STUD	2					
7	95617-08615	BOLT, STUD	2					
8	5HW-E1160-00	BREATHER ASSY	1					
9	93210-92448	O-RING	1					
10	90105-06X06	BOLT, FLANGE	2					
11	5HW-E1186-00	COVER, CYLINDER HEAD SIDE 2	1					
12	5HW-E1187-00	COVER, CYLINDER HEAD SIDE 3	1					
13	93210-57634	O-RING	2					
14	90105-06X06	BOLT, FLANGE	5					
15	90176-08026	NUT, CROWN	4					
16	90201-08609	WASHER, PLATE	4					
17	5HW-E1181-00	GASKET, CYLINDER HEAD 1	1					
18	99530-14016	PIN, DOWEL	2					
19	90105-06X10	BOLT, FLANGE	2					
20	94701-00X05	PLUG, SPARK	1					
21	1C0-E1311-00	CYLINDER 1	1					
22	4HC-11351-01	GASKET, CYLINDER	1					
23	91810-14X00	PIN, DOWEL	2					
24	5HW-E1166-00	PIPE, BREATHER 1	1					
25	90467-13064	CLIP	2					



1C01S00-D010

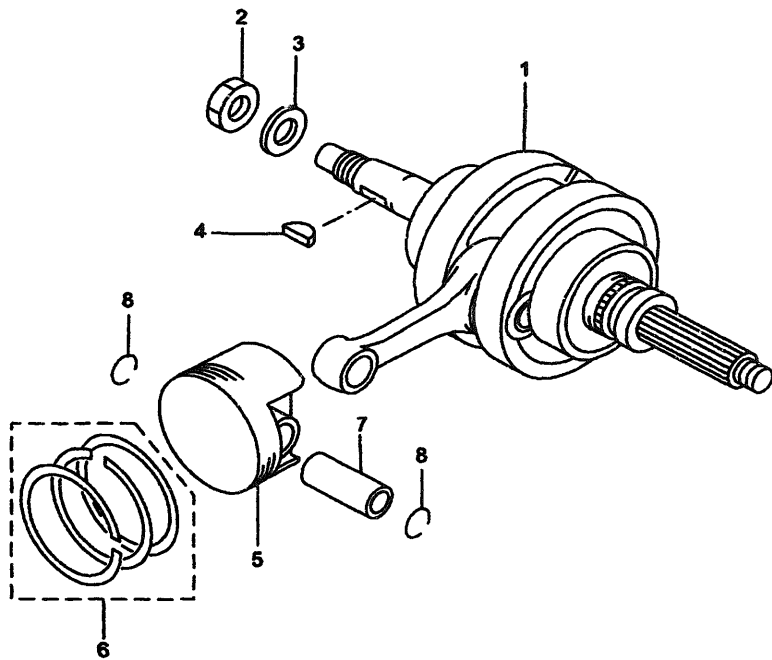


FIG. 2 CRANKSHAFT & PISTON

REF. NO.	PART NO.	DESCRIPTION	1C01				REMARKS
1	1C0-E1400-01	CRANKSHAFT ASSY	1				
2	90170-16X00	NUT	1				
3	90201-160F6	WASHER, PLATE	1				
4	90260-05013	KEY, WOODRUFF	1				
5	1C0-E1631-00	PISTON (STD)	1				UR STD
	1C0-E1636-00	PISTON (0.50MM O/S)	1				AP
	1C0-E1638-00	PISTON (1.00MM O/S)	1				AP
6	1C0-E1603-00	PISTON RING SET (STD)	1				UR STD
	1C0-E1605-00	PISTON RING SET (0.50MM O/S)	1				AP
	1C0-E1607-00	PISTON RING SET (1.00MM O/S)	1				AP
7	5SE-E1633-00	PIN, PISTON	1				
8	90468-12X00	CLIP	2				



1C01300-D020

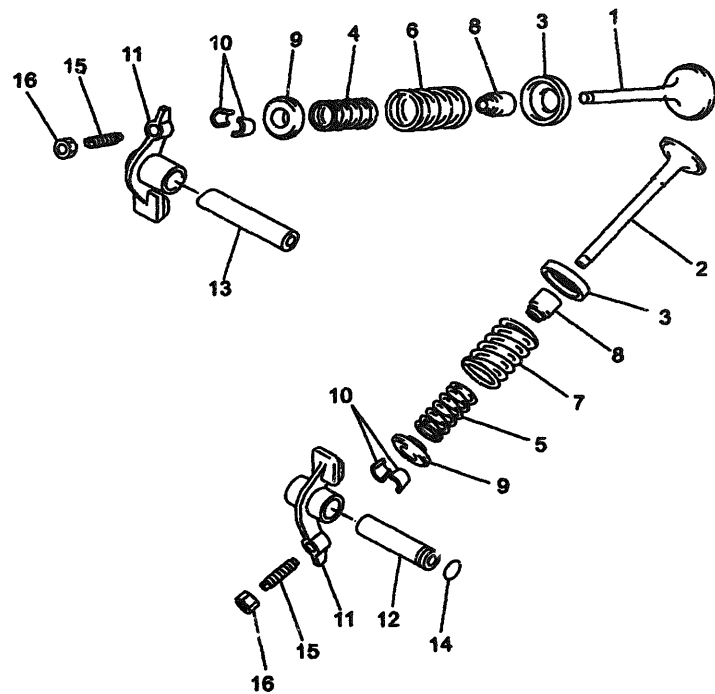


FIG. 3 VALVE

REF. NO.	PART NO.	DESCRIPTION	1C01				REMARKS
1	5GM-12111-00	VALVE, INTAKE	1				
2	5H0-12121-01	VALVE, EXHAUST	1				
3	4G0-12116-01	SEAT, VALVE SPRING	2				
4	4HC-12113-00	SPRING, VALVE INNER	1				
5	4HC-12113-00	SPRING, VALVE INNER	1				
6	4HC-12114-00	SPRING, VALVE OUTER	1				
7	4HC-12114-00	SPRING, VALVE OUTER	1				
8	5H0-12119-00	SEAL, VALVE STEM	2				
9	4G0-12117-00	RETAINER, VALVE SPRING	2				
10	4G0-12118-00	COTTER, VALVE	4				
11	1C0-E2151-00	ARM, VALVE ROCKER	2				
12	3Y1-12156-00	SHAFT, ROCKER 2	1				
13	3H0-12146-00	SHAFT, ROCKER	1				
14	93210-09165	O-RING	1				
15	2NX-12159-00	SCREW, VALVE ADJUSTING	2				
16	90170-06128	NUT	2				



1C01300-D030

B4

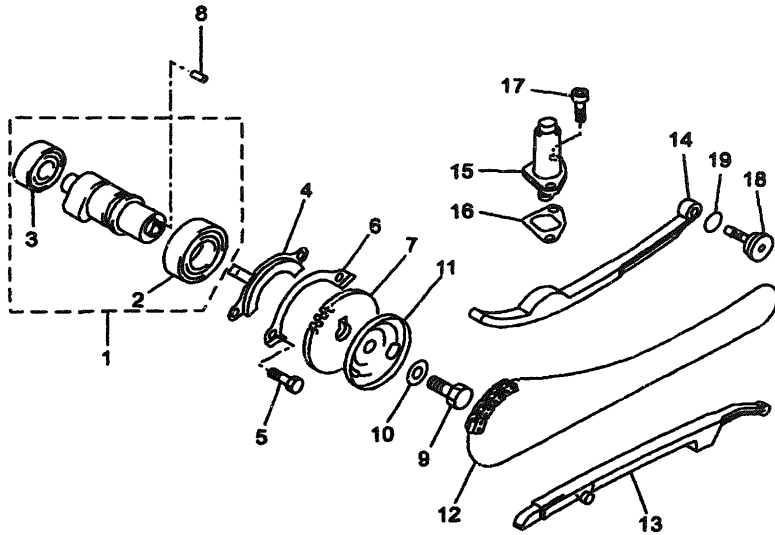


FIG. 4 CAMSHAFT & CHAIN

REF. NO.	PART NO.	DESCRIPTION	1C01				REMARKS
1	5SE-E2170-00	CAMSHAFT ASSY 1	1				
2	93306-005Y6	.BEARING	1				
3	93306-202YT	.BEARING	1				
4	4GA-1111F-00	PLATE	1				
5	90101-06X12	BOLT	2				
6	90215-06184	WASHER, LOCK	1				
7	4HC-12176-00	SPROCKET, CAM CHAIN	1				
8	93604-10X00	PIN, DOWEL	1				
9	90101-10303	BOLT	1				
10	90201-10X08	WASHER, PLATE	1				
11	4KB-11145-00	PLATE, BREATHER 2	1				
12	94582-17104	CHAIN	1				
13	5HW-E2231-00	GUIDE, STOPPER 1	1				
14	5HW-E2241-00	GUIDE, STOPPER 2	1				
15	2UJ-12210-01	TENSIONER ASSY, CAM CHAIN	1				
16	4RF-12213-00	GASKET, TENSIONER CASE	1				
17	90110-06X30	BOLT, HEXAGON SOCKET HEAD	2				
18	4HC-12157-00	BOLT	1				
19	93210-15171	O-RING	1				



1C01300-D040

B5

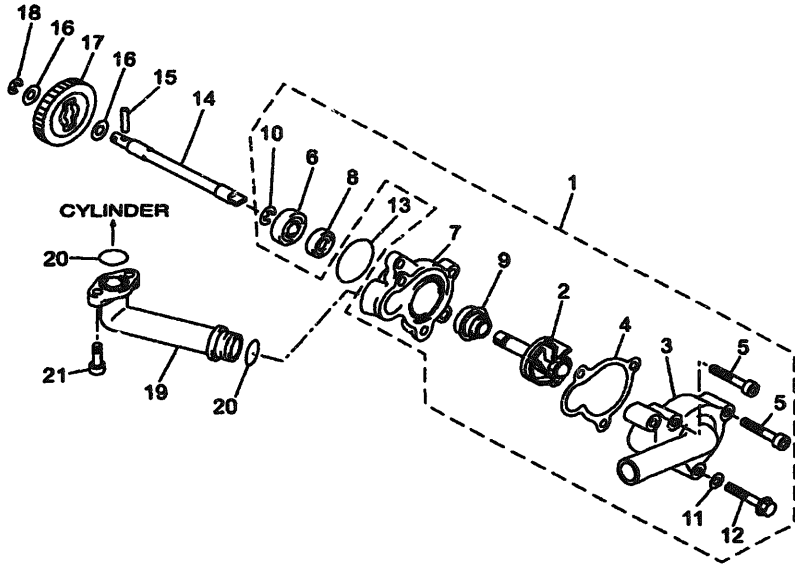


FIG. 5 WATER PUMP

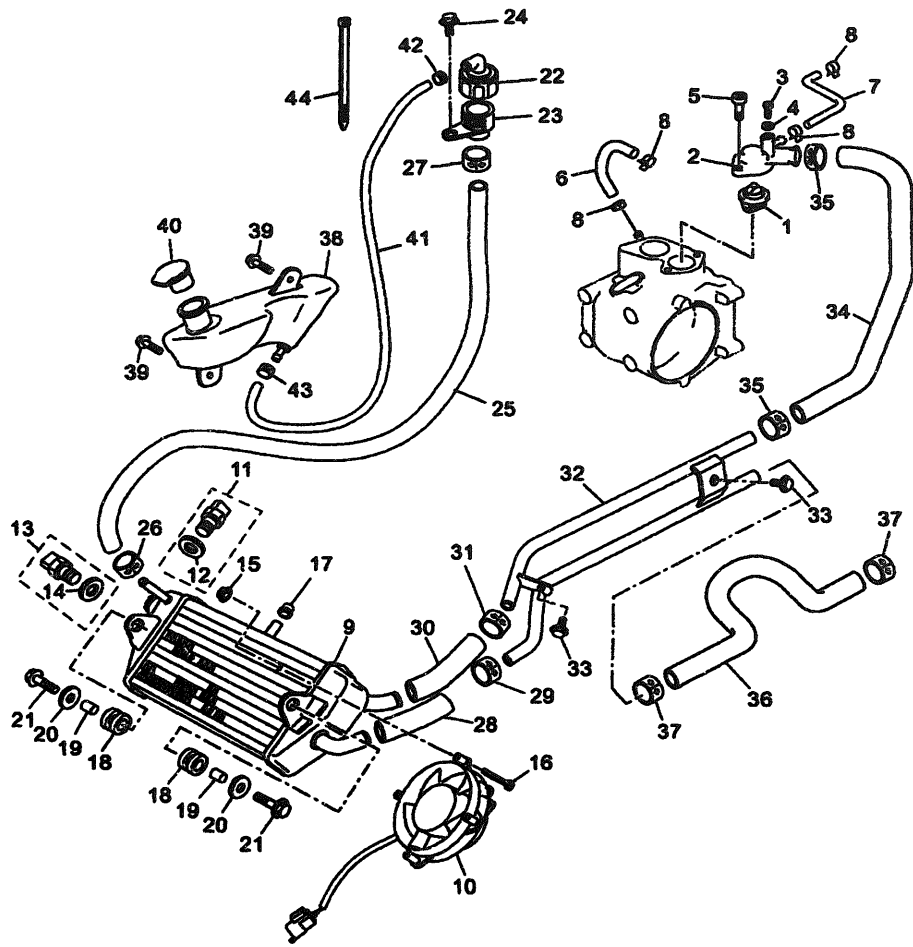
REF. NO.	PART NO.	DESCRIPTION	1C01				REMARKS
1	5HW-E2420-01	WATER PUMP ASSY	1				
2	5HW-E2450-00	.IMPELLER SHAFT ASSY	1				
3	5HW-E2422-00	.COVER, HOUSING	1				
4	4HC-12428-10	.GASKET, HOUSING COVER 2	1				
5	90110-06X45	.BOLT, HEXAGON SOCKET HEAD	2				
6	93306-000Y0	.BEARING	1				
7	5HW-E2421-00	.HOUSING, WATER PUMP	1				
8	93101-10090	.OIL SEAL	1				
9	11H-12438-10	.SEAL, MECHANICAL	1				
10	93410-10X00	.CIRCLIP	1				
11	90201-06X09	.WASHER, PLATE	1				
12	90105-06X19	.BOLT, FLANGE	1				
13	93210-33133	O-RING	1				
14	5GM-12426-00	SHAFT	1				
15	93603-22X00	PIN, DOWEL	1				
16	90201-08X10	WASHER, PLATE	2				
17	4HC-12459-00	GEAR, IMPELLER SHAFT	1				
18	99001-07600	CIRCLIP	1				
19	4HC-12446-00	JOINT	1				
20	93210-16275	O-RING	2				
21	90110-06X29	BOLT, HEXAGON SOCKET HEAD	2				



1C01300-D050

B6

FIG. 6 RADIATOR & HOSE



REF. NO.	PART NO.	DESCRIPTION	1C01					REMARKS
1	4HC-12411-00	THERMOSTAT	1					
2	1C0-E2413-00	COVER, THERMOSTAT	1					
3	90111-04X01	BOLT	1					
4	90201-047R9	WASHER, PLATE	1					
5	90110-06X27	BOLT, HEXAGON SOCKET HEAD	2					
6	1C0-E2576-00	HOSE 1	1					
7	1C0-E2577-00	HOSE 2	1					
8	90467-11108	CLIP	4					
9	1C0-E2460-00	RADIATOR ASSY	1					
10	1B9-E2405-00	BLOWER ASSY	1					
11	1C0-H2560-00	THERMO SWITCH ASSY	1					
12	5MF-H2558-00	.WASHER	1					
13	1C0-H2560-10	THERMO SWITCH ASSY	1					
14	5MF-H2558-00	.WASHER	1					
15	1B9-E2671-00	NUT 1	3					
16	1B9-E2675-00	BOLT, BLOWER HOLDING	3					
17	90480-20X00	GROMMET	1					
18	90480-15363	GROMMET	1					
19	90387-06X24	COLLAR	2					
20	90201-060A3	WASHER, PLATE	2					
21	9580M-06025	BOLT, FLANGE	2					
22	5MF-E2462-01	CAP, RADIATOR	1					
23	5MF-E2591-00	SUPT, FILLER NECK	1					
24	90149-06X04	SCREW	1					
25	1B9-E244H-00	HOSE 5	1					
26	90450-18X01	HOSE CLAMP ASSY	1					
27	90450-27X00	HOSE CLAMP ASSY	2					

FWD
1C01300-D060



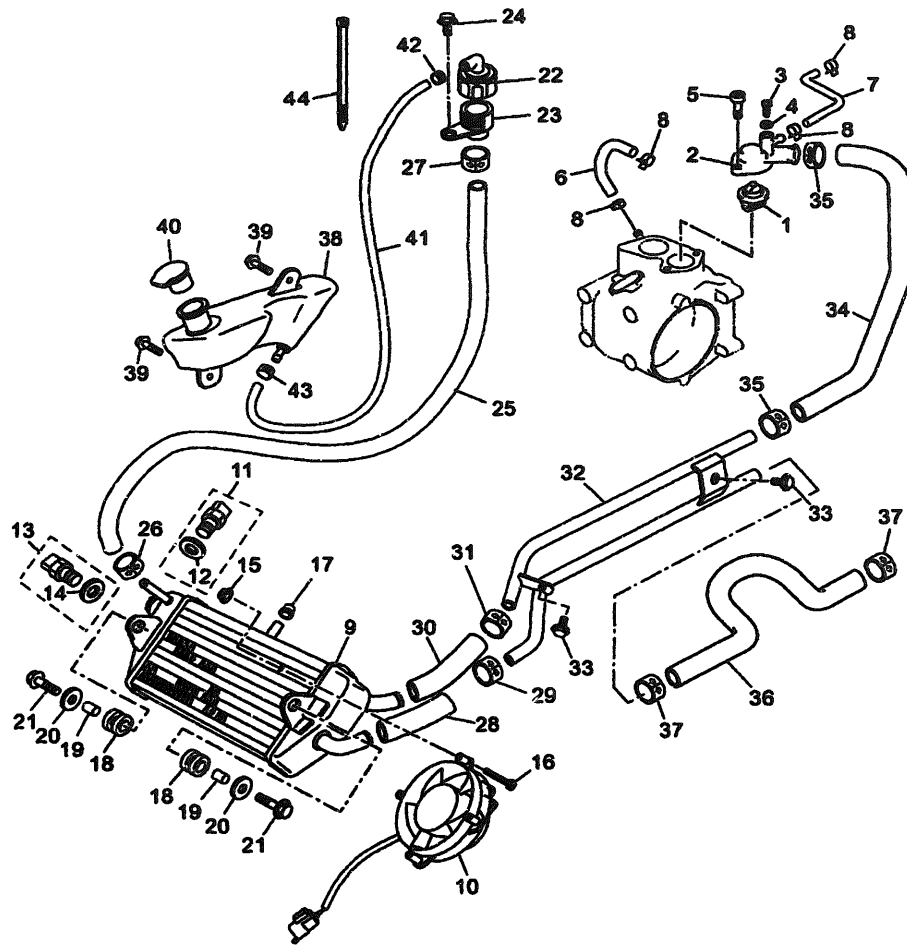


FIG. 6 RADIATOR & HOSE

REF. NO.	PART NO.	DESCRIPTION	1C01					REMARKS
28	1B9-E243A-00	HOSE 1	1					
29	90450-27X00	HOSE CLAMP ASSY	2					
30	1C0-E243E-00	HOSE 2	1					
31	90450-27X00	HOSE CLAMP ASSY	2					
32	1C0-E248B-00	PIPE ASSY 1	1					
33	90119-06X02	BOLT, WITH WASHER	2					
34	1C0-E243F-00	HOSE,3	1					
35	90450-27X00	HOSE CLAMP ASSY	2					
36	1C0-E244G-00	HOSE, 4	1					
37	90450-27X00	HOSE CLAMP ASSY	2					
38	1B9-F1871-00	TANK, RECOVERY	1					
39	90119-06X02	BOLT, WITH WASHER	2					
40	1B9-F1771-00	BODY, CAP	1					
41	1B9-F1817-00	PIPE 2	1					
42	90467-10X01	CLIP	2					
43	90467-10X01	CLIP	1					
44	90464-50X03	CLAMP	3					



1C01300-D060

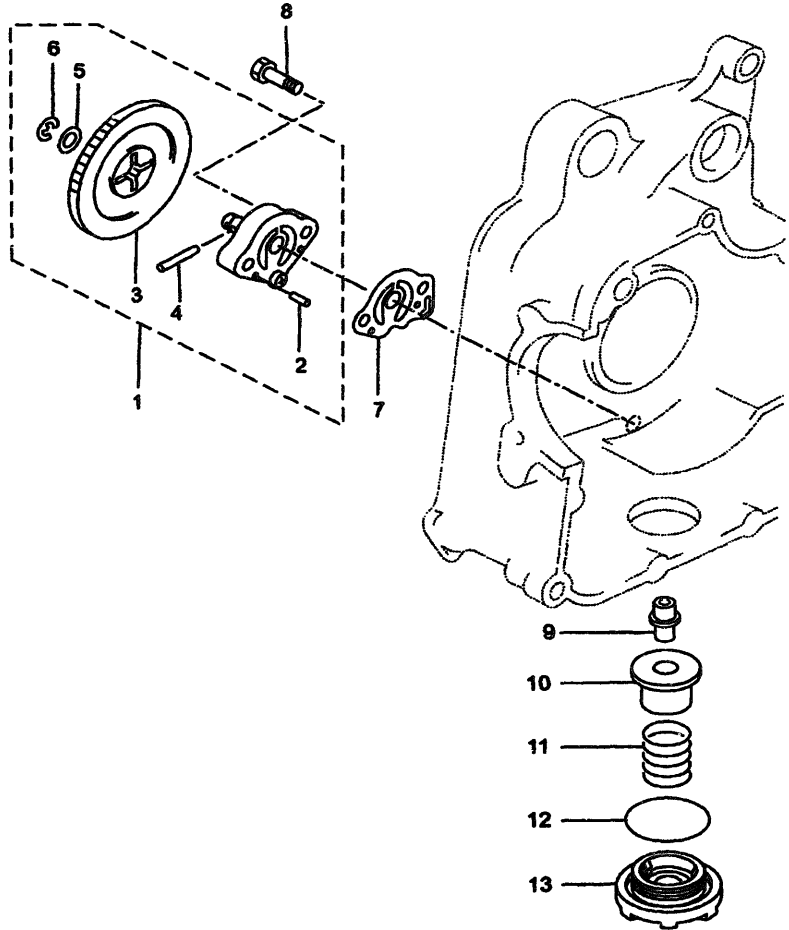


FIG. 7 OIL PUMP

REF. NO.	PART NO.	DESCRIPTION	TC01					REMARKS
1	5SE-E3300-00	OIL PUMP ASSY	1					
2	93603-12X01	.PIN, DOWEL	2					
3	5SE-E3325-00	.GEAR, PUMP DRIVEN	1					
4	93603-22X00	.PIN, DOWEL	1					
5	90201-08X10	.WASHER, PLATE	1					
6	93450-06X00	.CIRCLIP	1					
7	4HC-13475-00	GASKET	1					
8	90111-06X06	BOLT	2					
9	59V-11167-00	PIPE, BREATHER 2	1					
10	51Y-13411-00	STRAINER, OIL	1					
11	90501-18576	SPRING, COMPRESSION	1					
12	5DS-E5351-00	PLUG, DRAIN	1					
13	93210-347A1	O-RING	1					



1C01300-D070

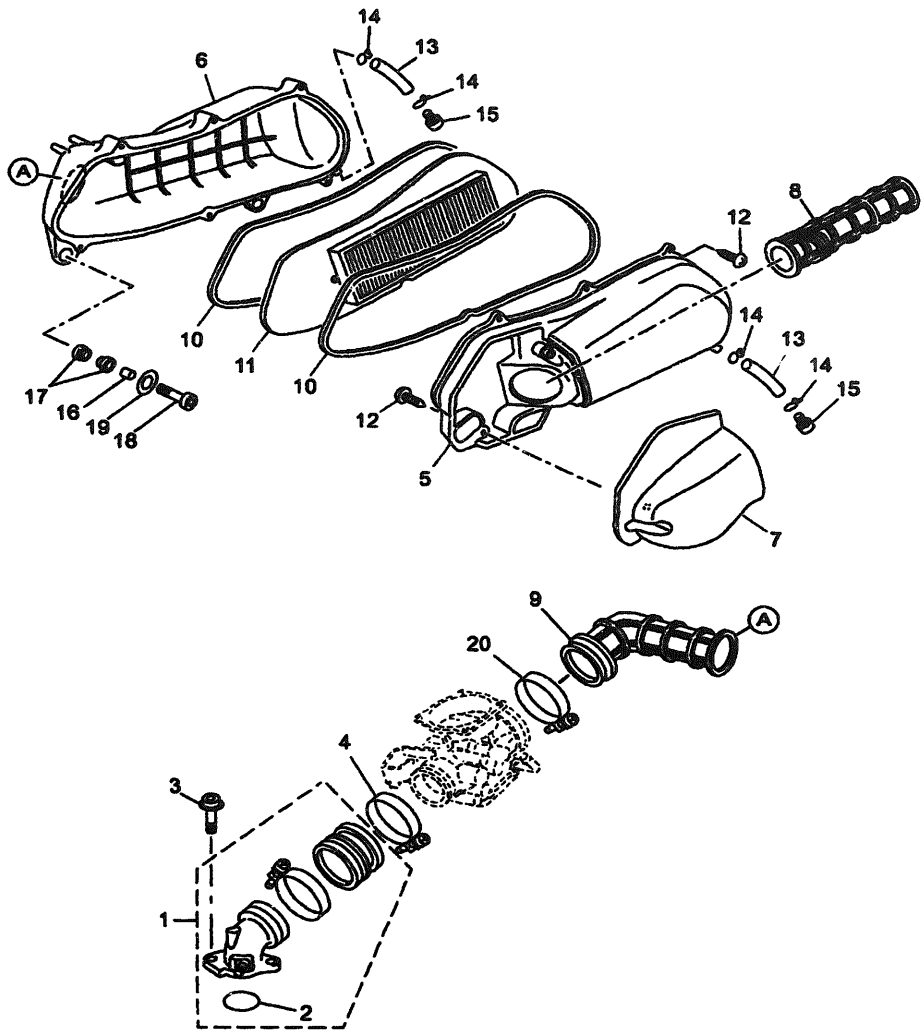


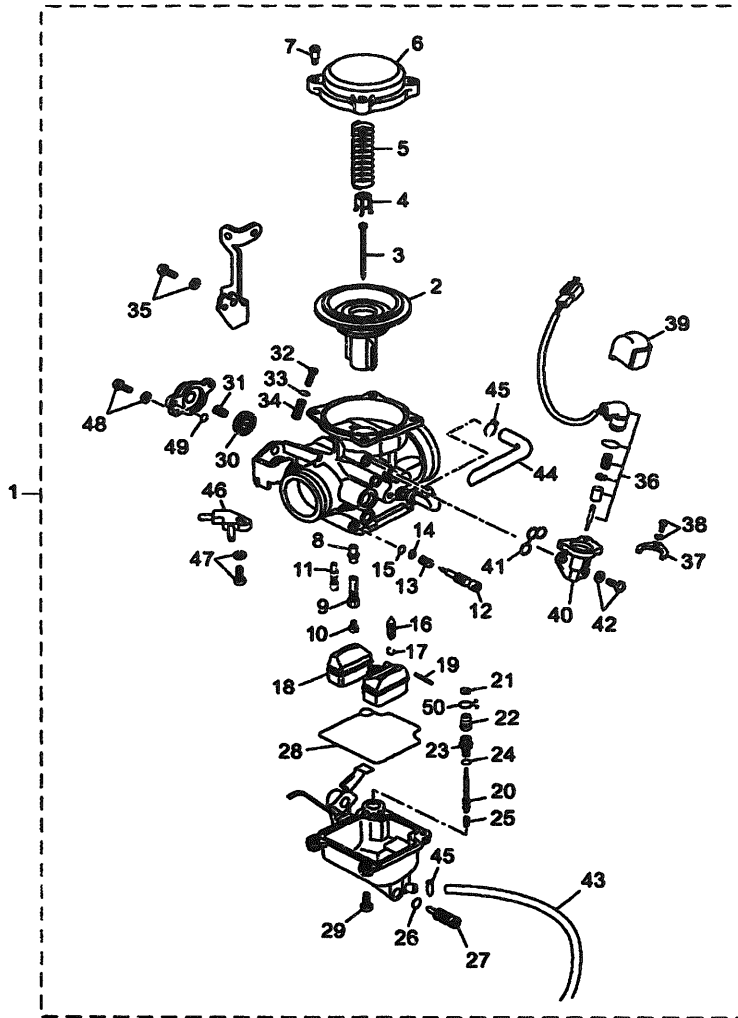
FIG. 8 INTAKE

REF. NO.	PART NO.	DESCRIPTION	101					REMARKS
1	1C0-E3590-00	CARBURETOR JOINT ASSY	1					
2	93210-34X00	.O-RING	1					
3	90110-06X28	BOLT, HEXAGON SOCKET HEAD	2					
4	90460-52210	CLAMP, HOSE	1					
5	1C0-E4411-00	CASE, AIR CLEANER 1	1					
6	1B9-E4412-00	CAP, CLEANER CASE 1	1					
7	1B9-E441A-00	COVER, CLEANER CASE 1	1					
8	1C0-E4437-00	DUCT	1					
9	1C0-E4453-00	JOINT, AIR CLEANER 1	1					
10	1B9-E4452-00	SEAL	2					
11	1B9-14451-00	ELEMENT, AIR CLEANER	1					
12	97707-50125	SCREW, TAPPING	10					
13	90446-14X00	HOSE	2					
14	90467-12X00	CLIP	4					
15	5DS-E446M-00	COVER, DRAIN VALVE	2					
16	90387-06X31	COLLAR	2					
17	90480-13X01	GROMMET	4					
18	9131N-06025	BOLT	2					
19	90201-06X06	WASHER, PLATE	2					
20	90450-60X01	HOSE CLAMP ASSY	1					



1C01300-D080

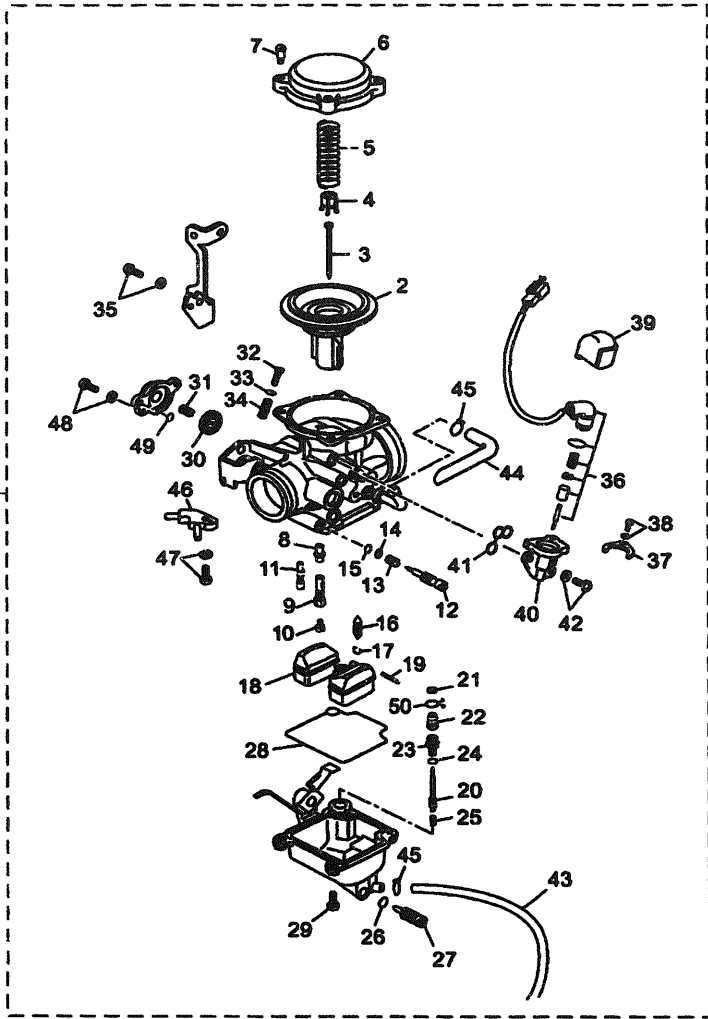
FIG. 9 CARBURETOR



REF. NO.	PART NO.	DESCRIPTION	1C01				REMARKS
1	1C0-E4901-02	CARBURETOR ASSY 1	1				
2	1C0-E4940-00	.DIAPHRAGM ASSY	1				
3	1C0-E4916-00	.NEEDLE	1				
4	1C0-E4936-00	.SEAT, SPRING	1				
5	1C0-E4933-00	.SPRING, DIAPHRAGM	1				
6	1C0-E4958-00	.COVER, DIAPHRAGM	1				
7	1C0-E4327-00	.SCREW	4				
8	1C0-E4947-00	.JET, NEEDLE	1				
9	1C0-E496A-00	.HOLDER, NEEDEL JET	1				
10	1C0-E4943-00	.JET, MAIN	1				
11	1C0-E4948-00	.JET	1				
12	1C0-E4923-00	.SCREW, PILOT	1				
13	1C0-E4160-00	.COIL, SPRING	1				
14	1C0-E4952-00	.WASHER	1				
15	1C0-E4562-00	.O-RING	1				
16	1C0-E4990-00	.NEEDLE VALVE ASSY	1				
17	1C0-E4919-00	.CLIP	1				
18	1C0-E4985-00	.FLOAT	1				
19	1C0-E4386-00	.PIN, FLOAT	1				
20	1C0-E493A-00	.ENRICHER ASSY	1				
21	1C0-E491A-00	.CAP	1				
22	1C0-E4968-00	.CAP	1				
23	1C0-E4534-00	.COLLAR	1				
24	1C0-E4397-00	O-RING	1				
25	1C0-E4938-00	SPRING	1				
26	1C0-E4397-10	O-RING	1				
27	1C0-E4383-00	SCREW, DRAIN	1				

1C01300-D090





1C01300-D090

FIG. 9 CARBURETOR

REF. NO.	PART NO.	DESCRIPTION	1C01					REMARKS
28	1C0-E4984-00	GASKET, FLOAT CHAMBER	1					
29	1C0-E4991-00	SCREW	4					
30	1C0-E490A-00	DIAPHRAGM SET 1	1					
31	1C0-E4935-00	SPRING	1					
32	1C0-E4922-00	SCREW, THROTTLE	1					
33	1C0-E4918-00	RING	1					
34	1C0-E4934-00	SPRING, THROTTLE STOP	1					
35	1C0-E4245-00	SCREW, GUIDE	1					
36	1C0-E4370-00	PLUNGER STARTER ASSY	1					
37	1C0-E4346-00	PLATE	1					
38	1C0-E4327-10	SCREW	2					
39	1C0-E4967-00	COVER	1					
40	1C0-E4907-00	BODY, STARTER	1					
41	1C0-E4397-20	O-RING	1					
42	1C0-E4327-20	SCREW	2					
43	1C0-E4196-00	PIPE	1					
44	1C0-E4197-00	PIPE	1					
45	1C0-E4937-00	CLIP	1					
46	1C0-E4350-00	PIPE ADAPTOR ASSY	1					
47	1C0-E4327-30	SCREW	1					
48	1C0-E4327-40	SCREW	2					
49	1C0-E4397-30	O-RING	1					
50	1C0-E4937-10	CLIP	1					

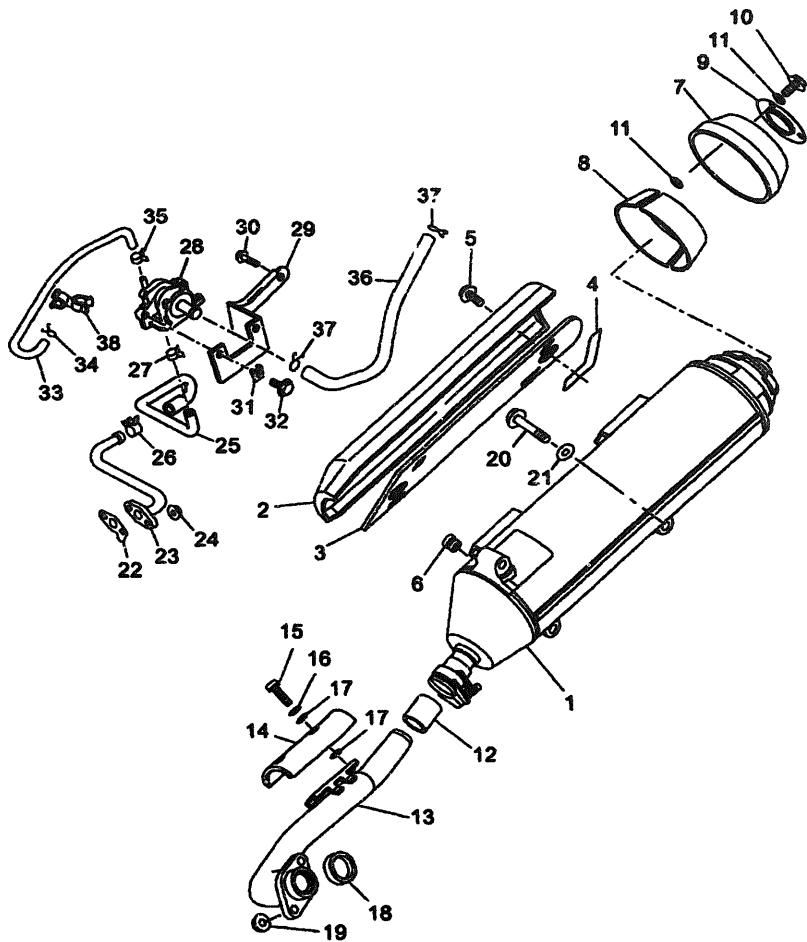


FIG. 10 EXHAUST

REF. NO.	PART NO.	DESCRIPTION	1C01				REMARKS
1	5SE-E4711-10	MUFFLER 1	1				
2	1B9-E4718-10	PROTECTOR, MUFFLER 1	1				
3	5GM-14738-00	PROTECTOR, MUFFLER 3	1				
4	5RB-14758-00	PROTECTOR, SILENCER	1				
5	90111-06015	BOLT	2				
6	90480-10332	GROMMET	2				
7	1S6-E4799-10	CAP (PAINTED)	1				FOR MUFFLER 5SE-E4711-20
8	5GM-14728-00	PROTECTOR, MUFFLER 2	2				
9	5GM-1482K-00	PLATE	1				
10	90111-06020	BOLT	3				
11	5RB-14766-00	WASHER, PROTECTOR	6				
12	4BH-14714-00	GASKET, MUFFLER	1				
13	5GM-14611-10	PIPE, EXHAUST 1	1				
14	4HC-14628-00	PROTECTOR, EXHAUST PIPE	1				
15	92017-06012	BOLT, BUTTON HEAD	2				
16	92907-06200	WASHER	2				
17	4BD-14766-00	WASHER, PROTECTOR	4				
18	3MT-14613-00	GASKET, EXHAUST PIPE	1				
19	95607-08200	NUT, SELF-LOCKING	2				
20	97017-12090	BOLT	3				
21	92907-12600	WASHER, PLATE	3				
22	5GM-14815-00	GASKET	1				
23	5GM-14871-01	PIPE 1	1				
24	95607-06200	NUT, SELF U-FLANGE	2				
25	1C0-E4881-00	HOSE, BEND 1	1				
26	90467-16X02	CLIP	1				
27	90467-13062	CLIP	1				



1C01300-D100

B13



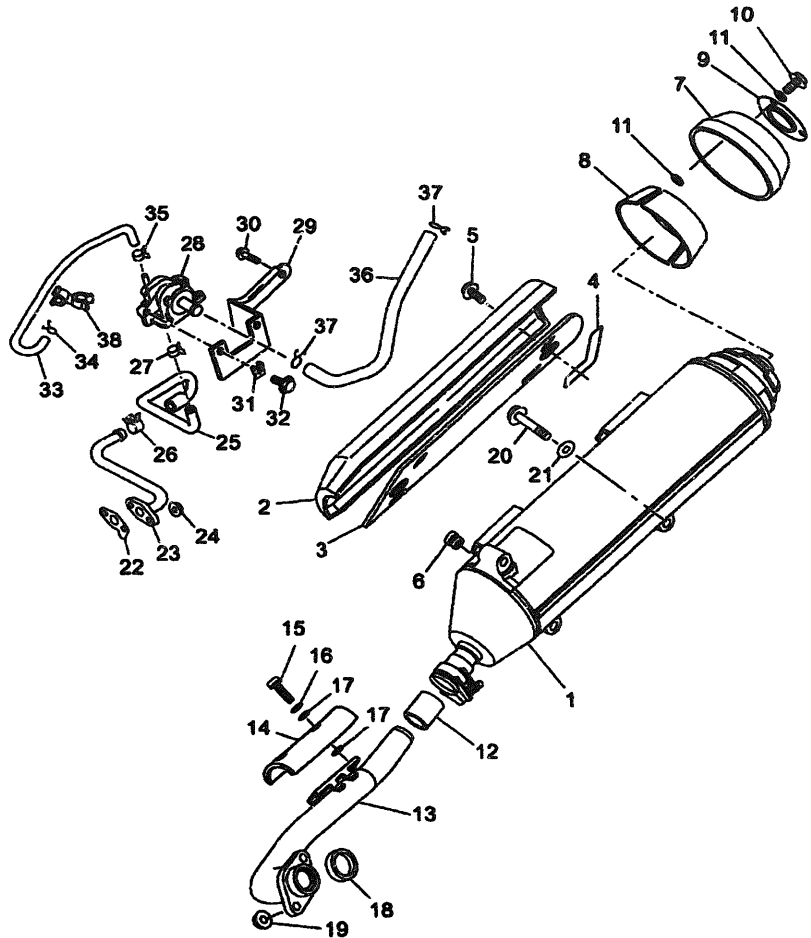


FIG. 10 EXHAUST

REF. NO.	PART NO.	DESCRIPTION	1C01				REMARKS
28	5SE-E4803-00	AIR INDUCTION SYSTEM ASSY	1				
29	1C0-E482K-10	PLATE	1				
30	90105-06X22	BOLT, FLANGE	2				
31	90183-06X02	NUT, SPRING	2				
32	95807-06020	BOLT, FLANGE	2				
33	5GM-13542-00	HOSE, VACUUM SENSING 1	1				
34	90467-09006	CLIP	1				
35	90467-07138	CLIP	1				
36	5SE-E4882-00	HOSE, BEND 2	1				
37	90467-16X00	CLIP	2				
38	90464-11004	CLAMP	1				



1C01300-D100

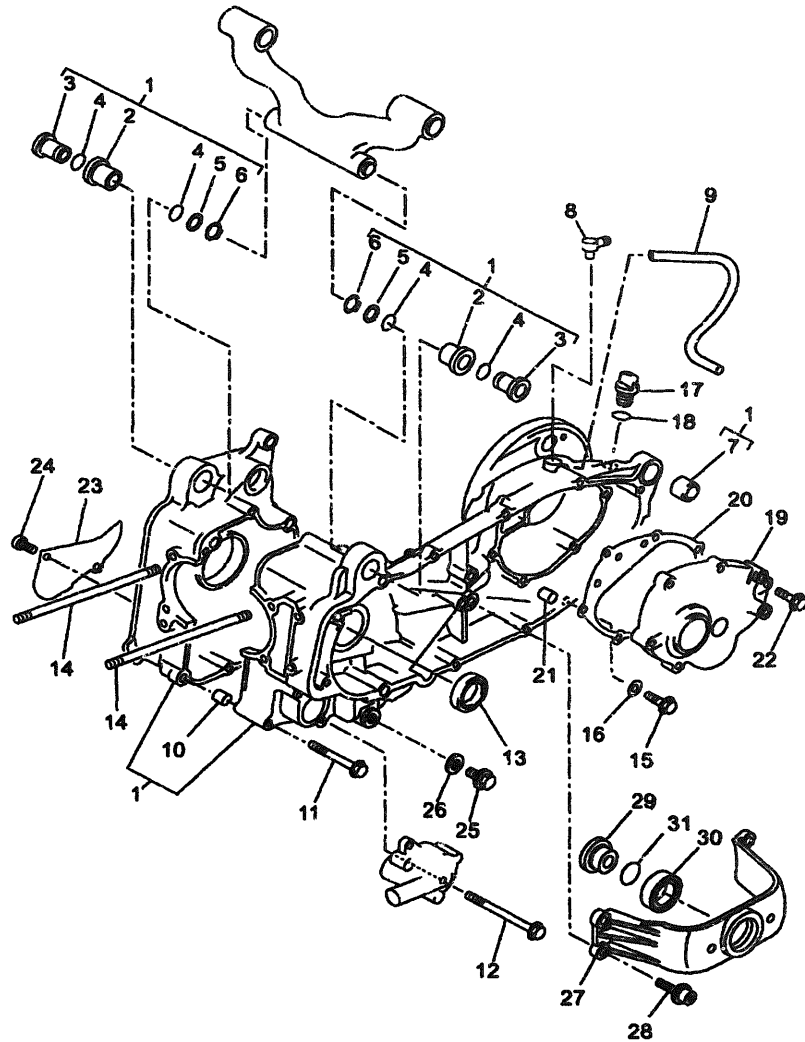


FIG. 11 CRANKCASE

REF. NO.	PART NO.	DESCRIPTION	1001				REMARKS
1	5SE-E5100-01	CRANKCASE ASSY	1				
2	4HC-15378-01	.HOLDER	2				
3	90387-1006J	.COLLAR	2				
4	93210-16275	.O-RING	4				
5	90201-16242	.WASHER, PLATE	2				
6	93410-16X00	.CIRCLIP	2				
7	4X6-F2216-00	.BUSH, REAR SHOCK ABSORBER	1				
8	4HC-15371-00	BREATHER	1				
9	90445-13X00	HOSE	1				
10	91810-14X00	PIN, DOWEL	2				
11	90105-06X08	BOLT, FLANGE	4				
12	90105-06X09	BOLT, FLANGE	5				
13	93102-30284	OIL SEAL	1				
14	90116-08591	BOLT, STUD	4				
15	90105-08X06	BOLT, FLANGE	1				
16	90430-08X00	GASKET	1				
17	3VL-E5363-00	PLUG, OIL	1				
18	93210-14104	O-RING	1				
19	5SE-E5421-00	COVER, CRANKCASE 2	1				
20	5SE-E5461-00	GASKET, CRANKCASE COVER 2	1				
21	91810-14X00	PIN, DOWEL	2				
22	90105-08X07	BOLT, FLANGE	6				
23	4HC-15492-00	COVER	1				
24	90110-06X30	BOLT, HEXAGON SOCKET HEAD	2				
25	90340-12X00	PLUG, STRAIGHT SCREW	1				
26	90430-12213	GASKET	1				
27	5HW-E5199-00	BRACKET	1				



1C01300-D110



CONTENTS

CYLINDER	B2
CRANKSHAFT & PISTON	B3
VALVE	B4
CAMSHAFT & CHAIN	B5
WATER PUMP	B6
RADIATOR & HOSE	B7
OIL PUMP	B9
INTAKE	B10
CARBURETOR	B11
EXHAUST	B13
CRANKCASE	B15
CRANKCASE COVER 1	C3
STARTER	C5
CLUTCH	C6
TRANSMISSION	C8
FRAME	C9
FENDER	C11
SIDE COVER	C12
REAR ARM & SUSPENSION	C13
FRONK FORK	C14
FUEL TANK	D2
SEAT	D4
FRONT WHEEL	D6
FRONT BRAKE CALIPER	D7
REAR WHEEL	D8
REAR BRAKE CALIPER	D9
STEERING HANDLE & CABLE	D10
FRONT MASTER CYLINDER	D12
STAND & FOOTREST	D14
LEG SHIELD	E2
GENERATOR	E4
STARTING MOTOR	E5
FLASHER LIGHT	E6
METER	E7

HEADLIGHT	E8
TAILLIGHT	E9
HANDLE SWITCH & LEVER	E10
ELECTRICAL 1	E11
ELECTRICAL 2	E12
NUMERICAL INDEX	M1

CONTENTS

CYLINDER	B2
CRANKSHAFT & PISTON	B3
VALVE	B4
CAMSHAFT & CHAIN	B5
WATER PUMP	B6
RADIATOR & HOSE	B7
OIL PUMP	B9
INTAKE	B10
CARBURETOR	B11
EXHAUST	B13
CRANKCASE	B15
CRANKCASE COVER 1	C3
STARTER	C5
CLUTCH	C6
TRANSMISSION	C8
FRAME	C9
FENDER	C11
SIDE COVER	C12
REAR ARM & SUSPENSION	C13
FRONK FORK	C14
FUEL TANK	D2
SEAT	D4
FRONT WHEEL	D6
FRONT BRAKE CALIPER	D7
REAR WHEEL	D8
REAR BRAKE CALIPER	D9
STEERING HANDLE & CABLE	D10
FRONT MASTER CYLINDER	D12
STAND & FOOTREST	D14
LEG SHIELD	E2
GENERATOR	E4
STARTING MOTOR	E5
FLASHER LIGHT	E6
METER	E7

HEADLIGHT	E8
TAILLIGHT	E9
HANDLE SWITCH & LEVER	E10
ELECTRICAL 1	E11
ELECTRICAL 2	E12
NUMERICAL INDEX	M1

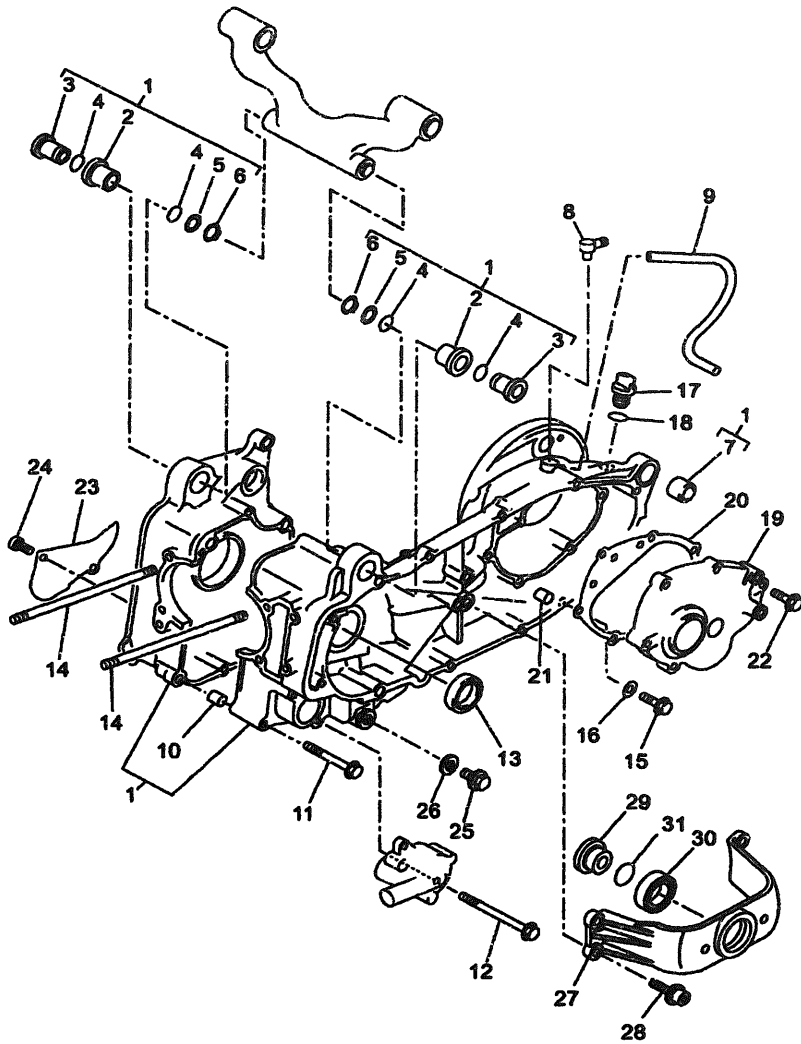


FIG. 11 CRANKCASE

REF. NO.	PART NO.	DESCRIPTION	1C01					REMARKS
28	90109-08X04	BOLT	4					
29	5GM-17649-00	SPACER	1					
30	93306-90603	BEARING	1					
31	93210-27672	O-RING	1					



1C01300-D110

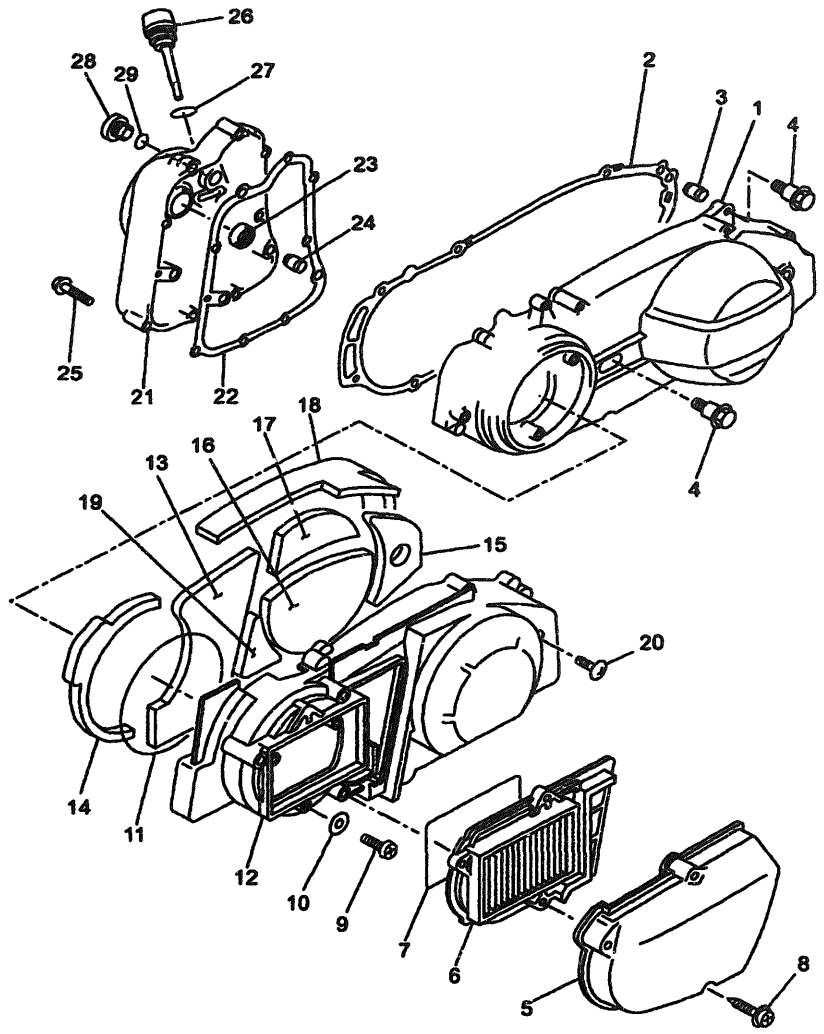


FIG. 12 CRANKCASE COVER 1

REF. NO.	PART NO.	DESCRIPTION	1C01				REMARKS
1	5SE-E5411-00	COVER, CRANKCASE 1	1				
2	5SE-E5451-00	GASKET, CRANKCASE COVER 1	1				
3	99530-10114	PIN, DOWEL	2				
4	90109-06030	BOLT	11				
5	5GM-15471-00	DUCT, AIR	1				
6	5GM-15407-00	ELEMENT 1	1				
7	17W-14462-00	SEAL	1				
8	90167-05003	SCREW, TAPPING	3				
9	98507-06020	SCREW, PAN HEAD	3				
10	92907-06600	WASHER, PLATE	3				
11	5SE-E5472-00	SEAL, AIR DUCT	1				
12	5SE-E5431-00	COVER, CRANKCASE 3	1				
13	5SE-E5316-00	DAMPER, ENGINE MOUNT 1	1				
14	5SE-E5326-00	DAMPER, ENGINE MOUNT 2	1				
15	5SE-E5335-00	DAMPER 3	1				
16	5SE-E5337-00	DAMPER 4	1				
17	5SE-E5338-00	DAMPER, ENGINE MOUNT 5	1				
18	5SE-E5491-00	PROTECTOR	1				
19	5SE-E5499-00	PROTECTOR, COVER	1				
20	3KJ-15481-00	BOLT 1	1				
21	1C0-E5417-00	COVER, CAP	1				
22	4HC-15453-00	GASKET	1				
23	93101-14092	OIL SEAL (S7-14-25-5.5-1-HS)	1				
24	91810-14X00	PIN, DOWEL	2				
25	90105-06X07	BOLT, FLANGE	10				
26	4HC-15363-00	PLUG, OIL	1				
27	93210-19123	O-RING	1				



1C1300-D120

C3



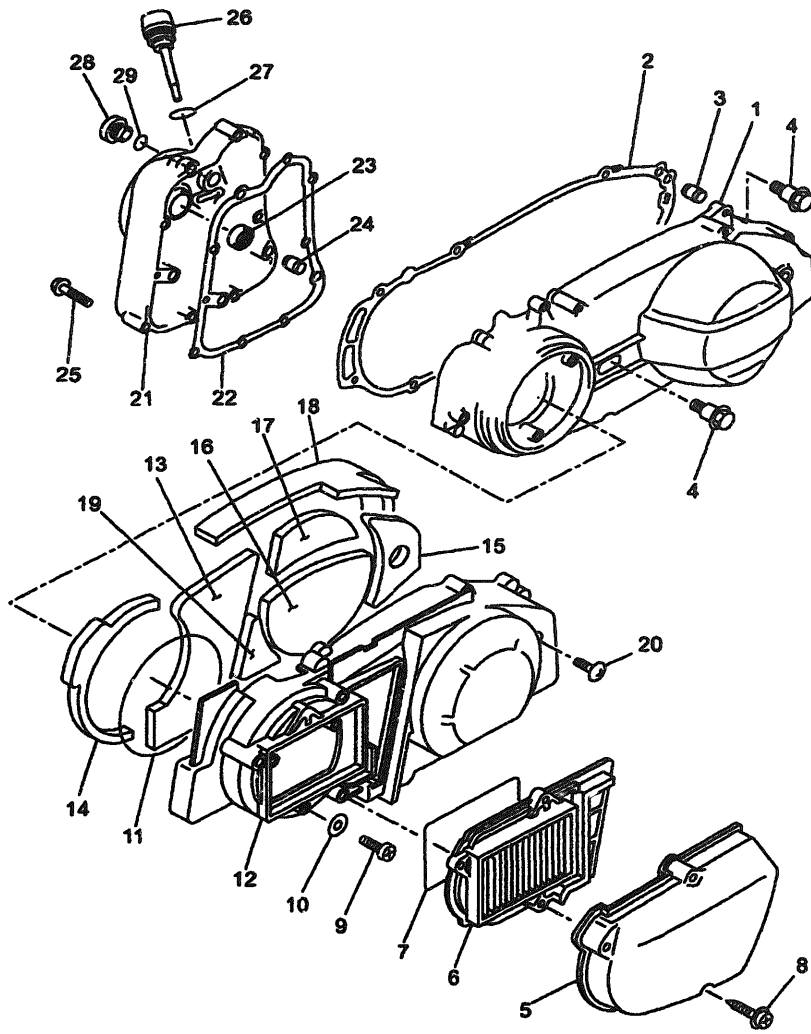


FIG. 12 CRANKCASE COVER 1

REF. NO.	PART NO.	DESCRIPTION	1C01				REMARKS
28	5HW-E5189-00	PLUG	1				
29	93210-16325	O-RING	1				



1C1300-D120

C4

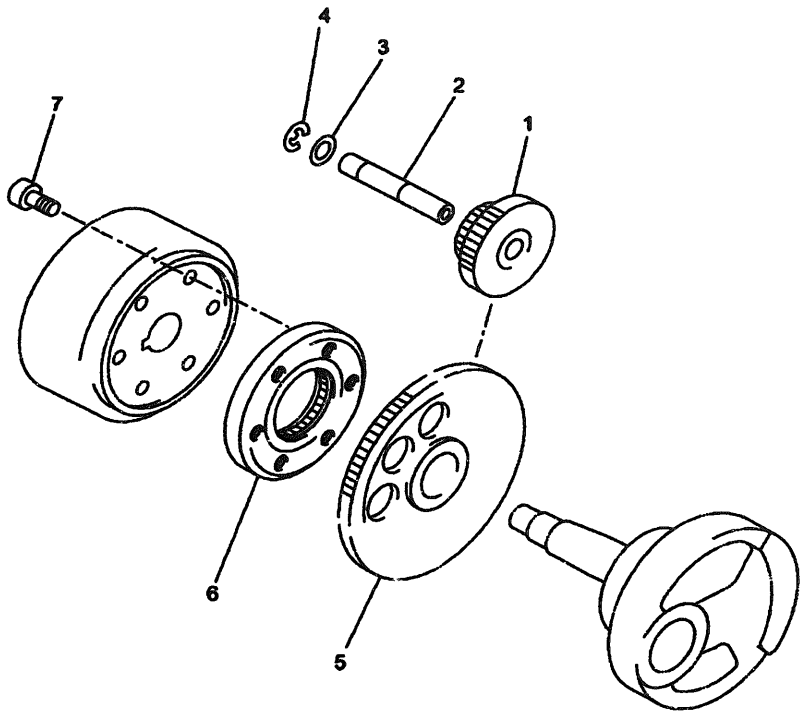


FIG. 13 STARTER

REF. NO.	PART NO.	DESCRIPTION	1C01					REMARKS
1	1C0-E5512-00	GEAR, IDLER 1	1					
2	2HT-15521-00	SHAFT 1	1					
3	90201-12166	WASHER, PLATE	1					
4	93410-12X00	CIRCLIP	1					
5	1C0-E5517-00	GEAR, IDLER 2	1					
6	4HC-15590-02	STARTER ONE-WAY ASSY	1					
7	90110-08X03	BOLT, HEXAGON SOCKET HEAD	3					



1C01300-D130

C5

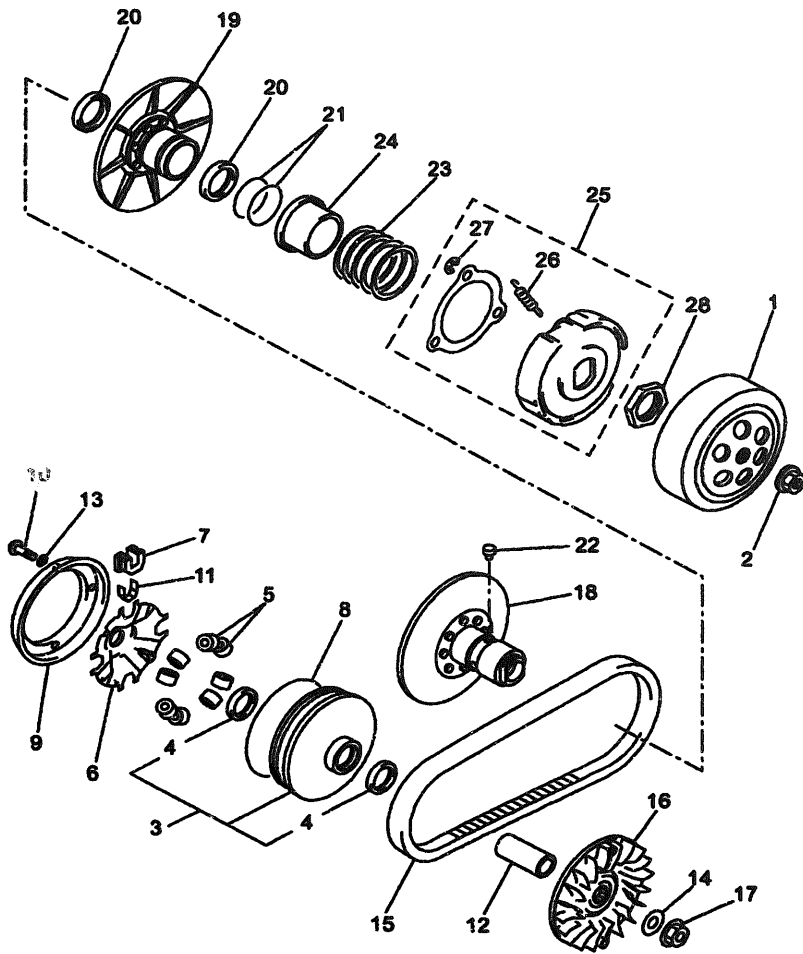


FIG. 14 CLUTCH

REF. NO.	PART NO.	DESCRIPTION	1C01				REMARKS
1	1C0-E6611-00	CLUTCH HOUSING COMP.	1				
2	90179-14469	NUT	1				
3	1C0-E7606-00	PRIMARY SLIDING SHEAVE COMP.	1				
4	93102-28800	.OIL SEAL	2				
5	1C0-E7632-00	WEIGHT	8				
6	1C0-E7623-00	CAM	1				
7	1C0-E7653-00	SLIDER	4				
8	93211-17800	O-RING	1				
9	1C0-E7639-00	STOPPER	1				
10	90111-04800	BOLT	4				
11	1C0-E7654-00	SPACER 1	4				
12	90387-19800	COLLAR	1				
13	90201-04802	WASHER, PLATE	4				
14	90201-144M8	WASHER, PLATE	1				
15	5SE-E7641-00	V-BELT	1				
16	1C0-E7611-00	SHEAVE, PRIMARY FIXED	1				
17	90179-14469	NUT	1				
18	1C0-E7660-00	SECONDARY FIXED SHEAVE COMP.	1				
19	1C0-E7670-00	SECONDARY SLIDING SHEAVE	1				
20	93109-41800	OIL SEAL	2				
21	93210-43X01	O-RING	2				
22	1C0-E7664-00	PIN, GUIDE	4				
23	90501-50X00	SPRING, COMPRESSION	1				
24	1C0-E7644-00	SEAT, SPRING	1				
25	1C0-E6620-00	CLUTCH CARRIER ASSY	1				
26	1C0-E6626-00	.SPRING, CLUTCH WEIGHT 1	3				
27	93430-08X02	.CIRCLIP	3				



1C01300-D140

C6



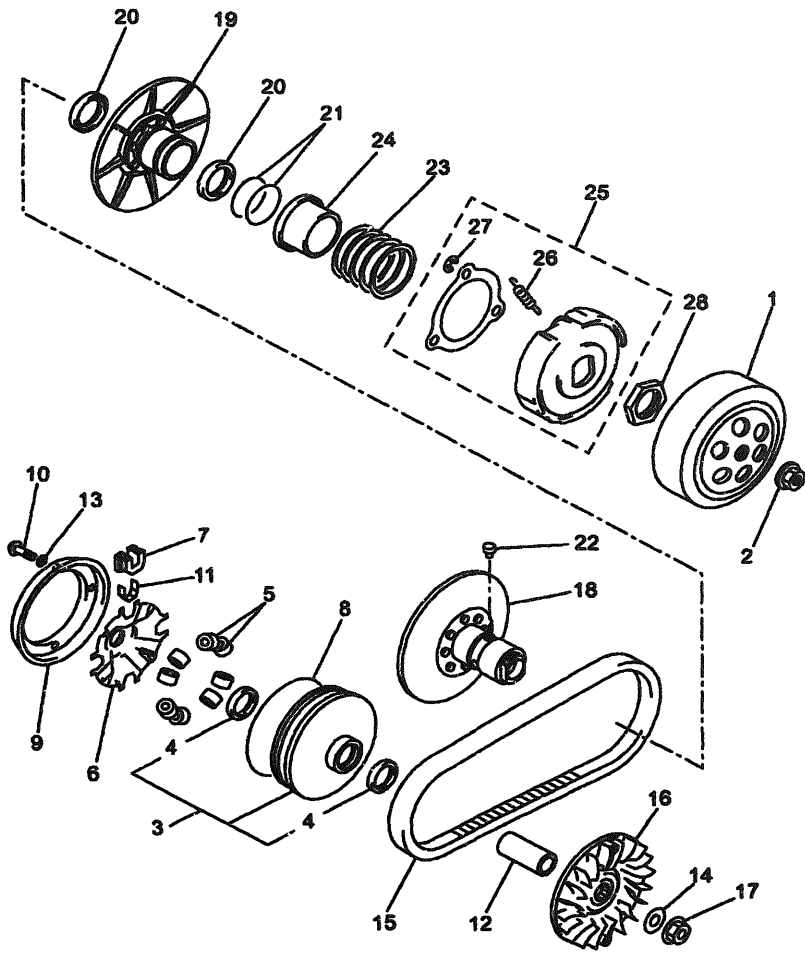


FIG. 14 CLUTCH

REF. NO.	PART NO.	DESCRIPTION	1C01					REMARKS
28	90170-36X02	NUT	1					



1C01300-D140

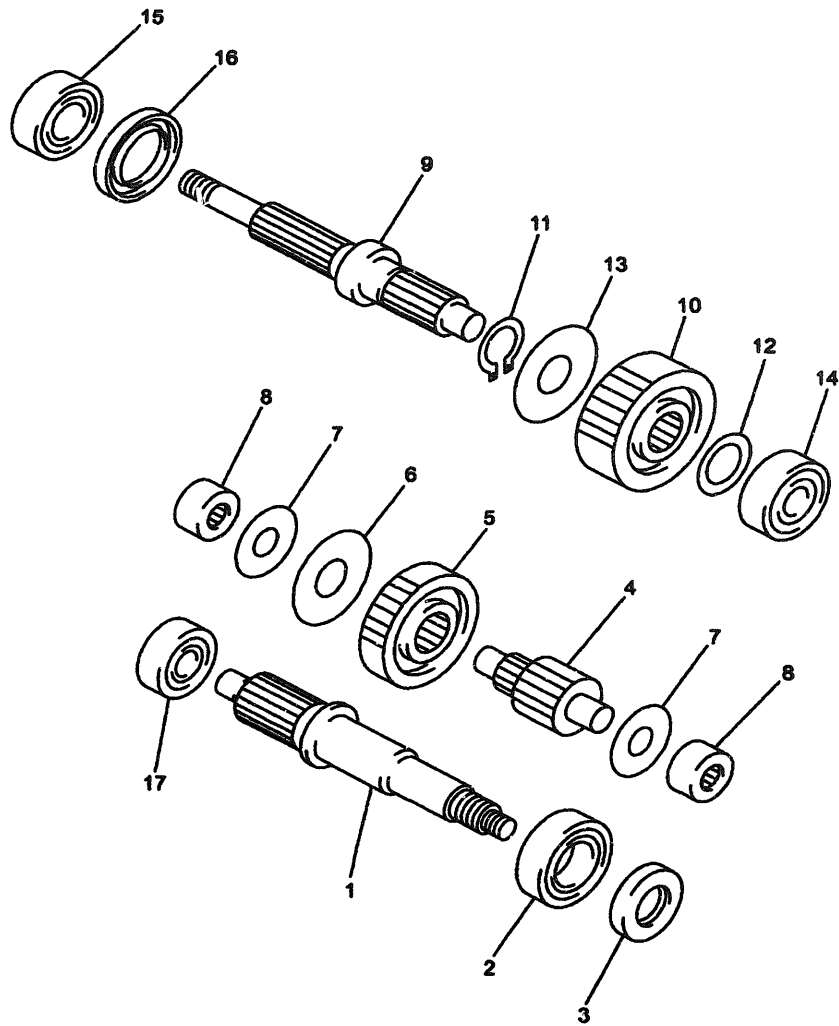


FIG. 15 TRANSMISSION

REF. NO.	PART NO.	DESCRIPTION	1C01				REMARKS
1	5HW-E6111-00	GEAR, PRIMARY DRIVE	1				
2	93306-205X8	BEARING	1				
3	93102-25800	OIL SEAL	1				
4	1C0-E7411-00	AXLE, MAIN	1				
5	5HW-E6151-00	GEAR, PRIMARY DRIVEN	1				
6	90208-21001	WASHER, CONICAL SPRING	1				
7	90201-156R4	WASHER, PLATE	2				
8	93311-415Y0	BEARING	2				
9	5SE-E7421-00	AXLE, DRIVE	1				
10	1C0-E7211-10	GEAR, 1ST WHEEL	1				
11	99009-25400	CIRCLIP	1				
12	90201-232K5	WASHER, PLATE	1				
13	90208-25001	WASHER, CONICAL SPRING	1				
14	93306-303X1	BEARING	1				
15	93306-272Y1	BEARING	1				
16	93102-32004	OIL SEAL	1				
17	93306-302X2	BEARING	1				



1C01300-D150

C8

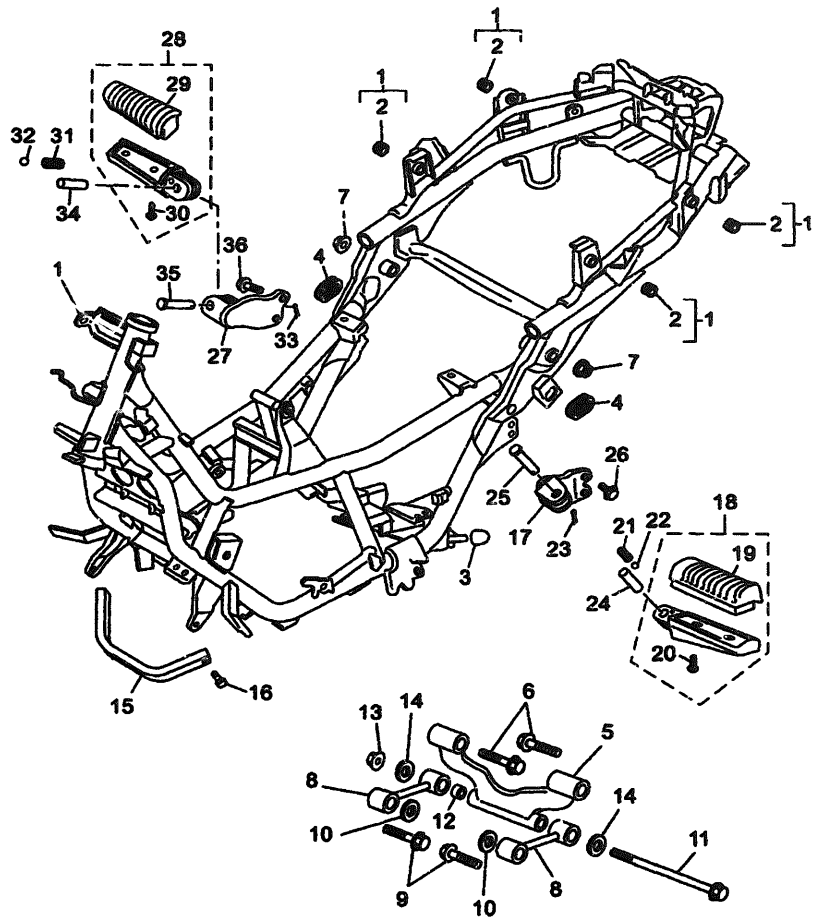
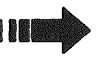


FIG. 16 FRAME

REF. NO.	PART NO.	DESCRIPTION	1C01				REMARKS
1	1B9-F1110-01-33	FRAME COMP.	1				UR YB
2	1B9-F1485-00	.DAMPER, RUBBER 1	4				
3	3VR-27114-00	STOPPER, MAIN STAND	1				
4	90480-01141	GROMMET	2				
5	1B9-F1420-00	ENGINE BRACKET COMP. 2	1				
6	90105-12X01	BOLT, FLANGE	2				
7	90185-12072	NUT, SELF-LOCKING	2				
8	1B9-F1480-00	STAY, ENGINE	2				
9	95817-10045	BOLT, FLANGE	2				
10	90201-105A2	WASHER, PLATE	4				
11	90105-10X08	BOLT, FLANGE	1				
12	90387-10X05	COLLAR	1				
13	90185-10154	NUT, SELF-LOCKING	1				
14	90201-105A2	WASHER, PLATE	2				
15	1B9-F119F-00	PIPE CROSS 8	1				
16	9582M-06025	BOLT, FLANGE	2				
17	1B9-F741L-00	BRACKET 4	1				
18	1B9-F7431-00	FOOTREST, REAR 1	1				
19	1B9-F7454-00	.COVER, FOOTREST	1				
20	90157-05079	.SCREW, PAN HEAD	2				
21	90501-15001	SPRING, COMPRESSION	1				
22	93501-04011	BALL	1				
23	91401-16012	PIN, COTTER	1				
24	90387-064H8	COLLAR	1				
25	90240-06042	PIN, CLEVIS	1				
26	9582M-08016	BOLT, FLANGE	2				
27	1B9-F742L-00	BRACKET 5	1				



1C01300-D160



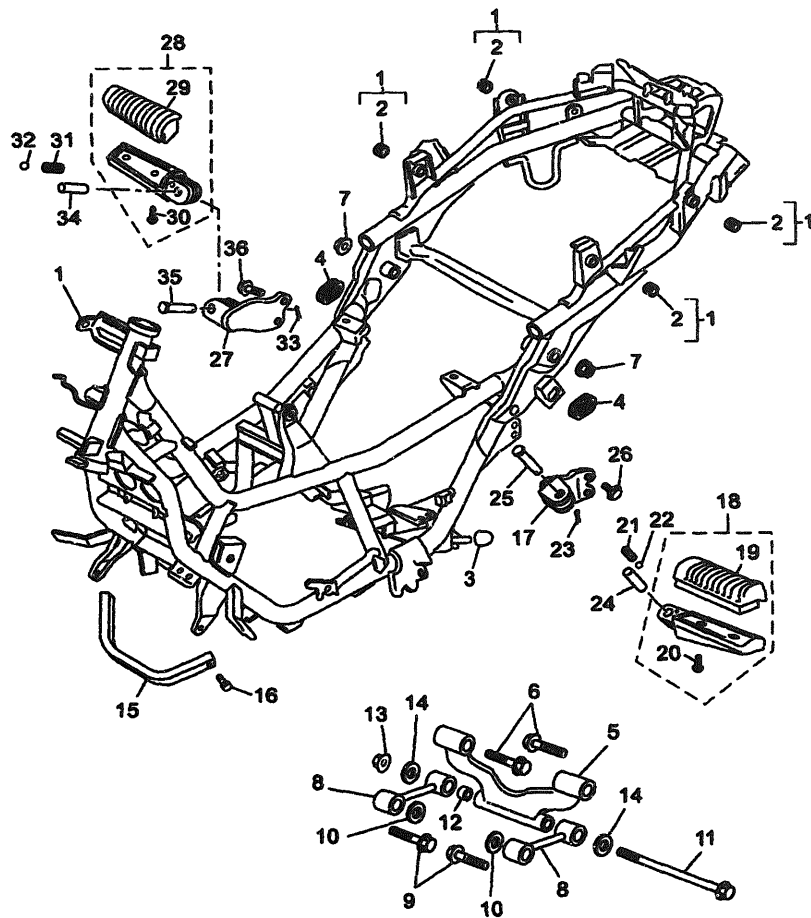


FIG. 16 FRAME

REF. NO.	PART NO.	DESCRIPTION	1C01					REMARKS
28	1B9-F7441-00	FOOTREST, REAR 2	1					
29	1B9-F7454-00	.COVER, FOOTREST	1					
30	90157-05079	.SCREW, PAN HEAD	2					
31	90501-15001	SPRING, COMPRESSION	1					
32	93501-04011	BALL	1					
33	91401-16012	PIN, COTTER	1					
34	90387-064H8	COLLAR	1					
35	90240-06042	PIN, CLEVIS	1					
36	9582M-08016	BOLT, FLANGE	2					



1C01300-D160

C10

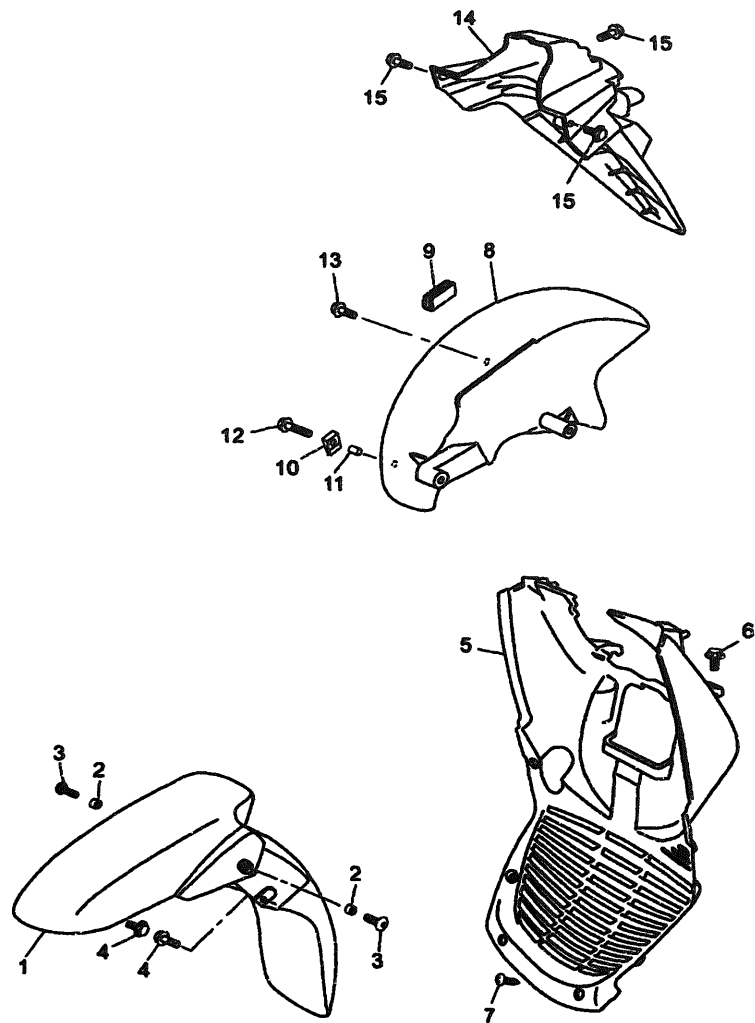


FIG. 17 FENDER

REF. NO.	PART NO.	DESCRIPTION	1C01				REMARKS
1	1B9-F1511-00-P1	FENDER, FRONT	1				UR S3
	1B9-F1511-00-P2	FENDER, FRONT	1				UR DBNM8
	1B9-F1511-00-P3	FENDER, FRONT	1				UR DYM8
	1B9-F1511-00-P4	FENDER, FRONT	1				UR RM5
2	90387-06X04	COLLAR	2				
3	90159-06816	SCREW, WITH WASHER	2				
4	90109-06X05	BOLT	2				
5	1B9-F1552-00	FENDER, INNER	1				
6	9580M-06012	BOLT, FLANGE	2				
7	90167-04X00	SCREW, TAPPING	6				
8	1B9-F1611-00	FENDER, REAR	1				
9	1C0-F1649-00	DAMPER	1				
10	90183-06X01	NUT, SPRING	1				
11	90387-06X04	COLLAR	1				
12	9580M-06050	BOLT, FLANGE	1				
13	90109-06X05	BOLT	1				
14	1B9-F1685-00	BRACKET, LICENSE	1				
15	90109-06X05	BOLT	3				



1C01300-D170

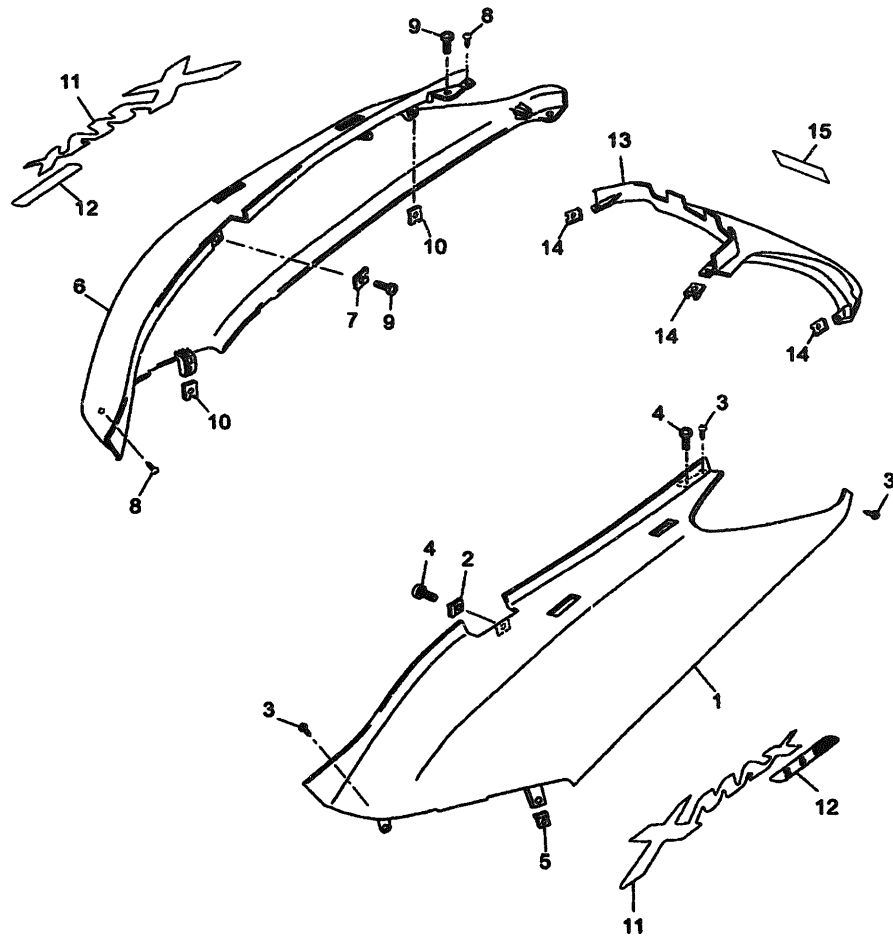


FIG. 18 SIDE COVER

REF. NO.	PART NO.	DESCRIPTION	1C01				REMARKS
1	1B9-F1721-00-P1	COVER, SIDE 2	1				UR S3
	1B9-F1721-00-P2	COVER, SIDE 2	1				UR DBNM8
	1B9-F1721-00-P3	COVER, SIDE 2	1				UR DYM8
	1B9-F1721-00-P4	COVER, SIDE 2	1				UR RM5
2	90183-06816	NUT, SPRING	1				
3	9890L-06016	SCREW, BIND	2				
4	90167-04X00	SCREW, TAPPING	2				
5	5DS-F8317-00	NUT, EMBLEM	2				
6	1B9-F1731-00-P1	COVER, SIDE 3	1				UR S3
	1B9-F1731-00-P2	COVER, SIDE 3	1				UR DBNM8
	1B9-F1731-00-P3	COVER, SIDE 3	1				UR DYM8
	1B9-F1731-00-P4	COVER, SIDE 3	1				UR RM5
7	90183-06816	NUT, SPRING	1				
8	9890L-06016	SCREW, BIND	2				
9	90167-04X00	SCREW, TAPPING	2				
10	5DS-F8317-00	NUT, EMBLEM	2				
11	1C0-F1781-00	EMBLEM 1	2				
12	1C0-F1788-00	GRAPHIC	2				
13	1B9-F1741-00-P1	COVER, SIDE 4	1				UR S3
	1B9-F1741-00-P2	COVER, SIDE 4	1				UR DBNM8
	1B9-F1741-00-P3	COVER, SIDE 4	1				UR DYM8
	1B9-F1741-00-P4	COVER, SIDE 4	1				UR RM5
14	5DS-F8317-00	NUT, EMBLEM	4				
15	99236-00080	EMBLEM, YAMAHA	1				UR Color A, C, D
	99237-00080	EMBLEM, YAMAHA	1				UR Color B

1C01300-D180

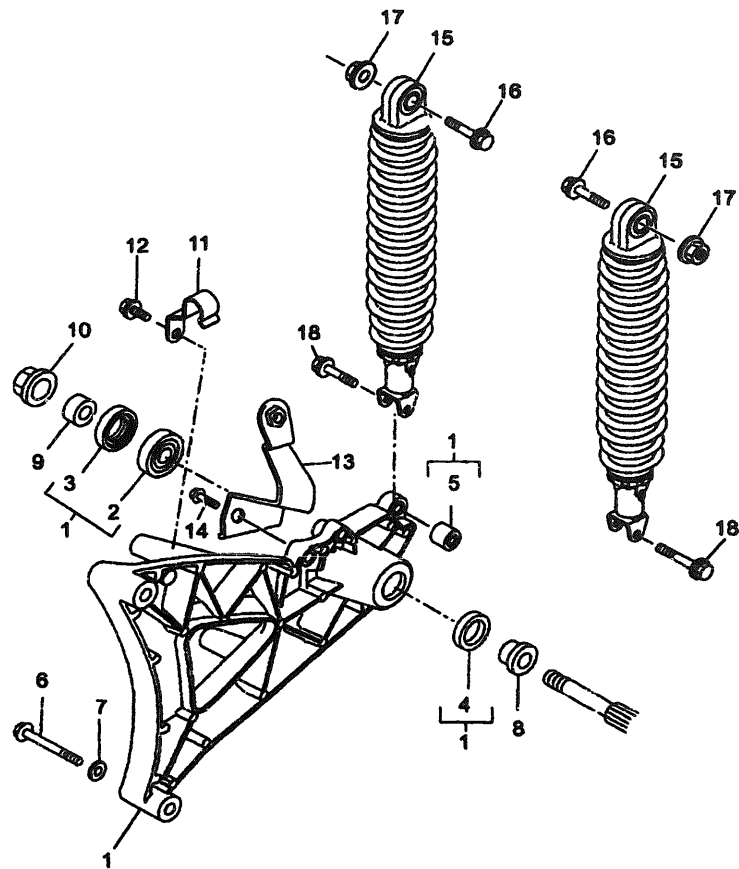


FIG. 19 REAR ARM & SUSPENSION

REF. NO.	PART NO.	DESCRIPTION	1C01				REMARKS
1	1C0-F2110-00	REAR ARM COMP.	1				
2	1S6-F2176-00	.BEARING	1				
3	1S6-F2358-00	.SEAL 1	1				
4	1S6-F2359-00	.SEAL 2	1				
5	4X6-F2216-00	.BUSH, REAR SHOCK ABSORBER	1				
6	90101-10X06	BOLT	2				
7	90201-10X11	WASHER, PLATE	2				
8	90387-17X02	COLLAR	1				
9	90387-17X01	COLLAR	1				
10	90185-14166	NUT, SELF-LOCKING	1				
11	5SE-F5876-00	HOLDER, BRAKE HOSE 2	1				
12	9580L-08016	BOLT, FLANGE	1				
13	1C0-F1644-00	STAY, REAR	1				
14	9580M-06016	BOLT, FLANGE	1				
15	1B9-F2210-00	SHOCK ABSORBER ASSY, REAR	2				
16	9582M-10040	BOLT, FLANGE	2				
17	90185-10840	NUT, SELF-LOCKING	2				
18	9582N-08030	BOLT, FLANGE	2				



1C01300-D190

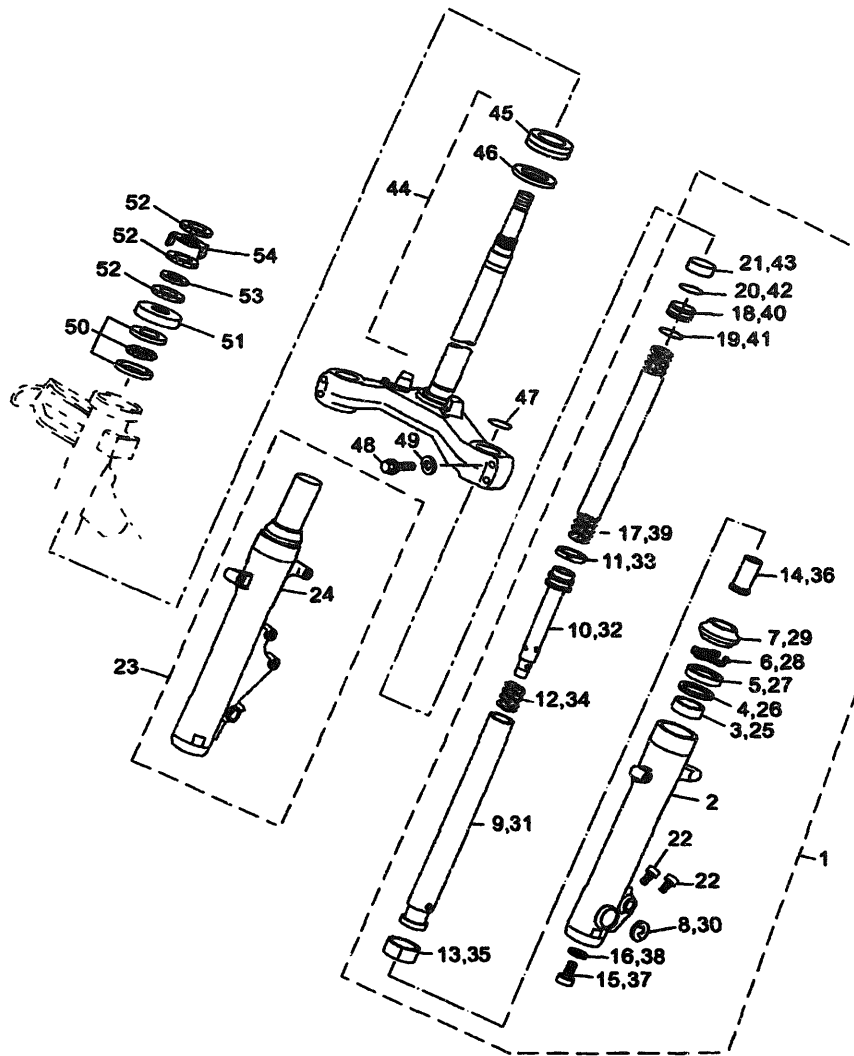


FIG. 20 FRONK FORK

REF. NO.	PART NO.	DESCRIPTION	1C01				REMARKS
1	1B9-F3102-00	FRONT FORK ASSY (L.H)	1				
2	1B9-F3126-00	.TUBE, OUTER (LEFT)	1				
3	1B9-F3125-00	.METAL, SLIDE 1	1				
4	1B9-F3146-00	.WASHER, OIL SEAL	1				
5	1B9-F3145-00	.OIL SEAL	1				
6	1B9-F3156-00	.CLIP, OIL SEAL	1				
7	1B9-F3144-00	.SEAL, DUST	1				
8	2C8-F3108-00	.EMBLEM	1				
9	1B9-F3110-00	.INNER TUBE COMP.1	1				
10	1B9-F3170-00	.CYLINDER COMP., FRONT FORK	1				
11	1B9-F3157-00	.RING, PISTON	1				
12	1B9-F3151-00	.SPRING, REBOUND	1				
13	1B9-F3171-00	.PISTON, FRONT FORK	1				
14	1B9-F3173-00	.SPINDLE, TAPER	1				
15	1B9-F3181-00	.BOLT, HEXAGON SOCKET HEAD	1				
16	1B9-F3158-00	.GASKET	1				
17	1B9-F3141-00	.SPRING, FRONT FORK	1				
18	1B9-F3111-00	.BOLT, CAP	1				
19	1B9-F3188-00	.O-RING	1				
20	1B9-F3183-00	.CIRCLIP	1				
21	1B9-F3154-00	.PLUG, INNER TUBE	1				
22	9581L-06030	.BOLT, FLANGE	2				
23	1B9-F3103-00	FRONT FORK ASSY (R.H)	1				
24	1B9-F3136-00	.TUBE, OUTER (RIGHT)	1				
25	1B9-F3125-00	.METAL, SLIDE 1	1				
26	1B9-F3146-00	.WASHER, OIL SEAL	1				
27	1B9-F3145-00	.OIL SEAL	1				



1C01300-D200

C14



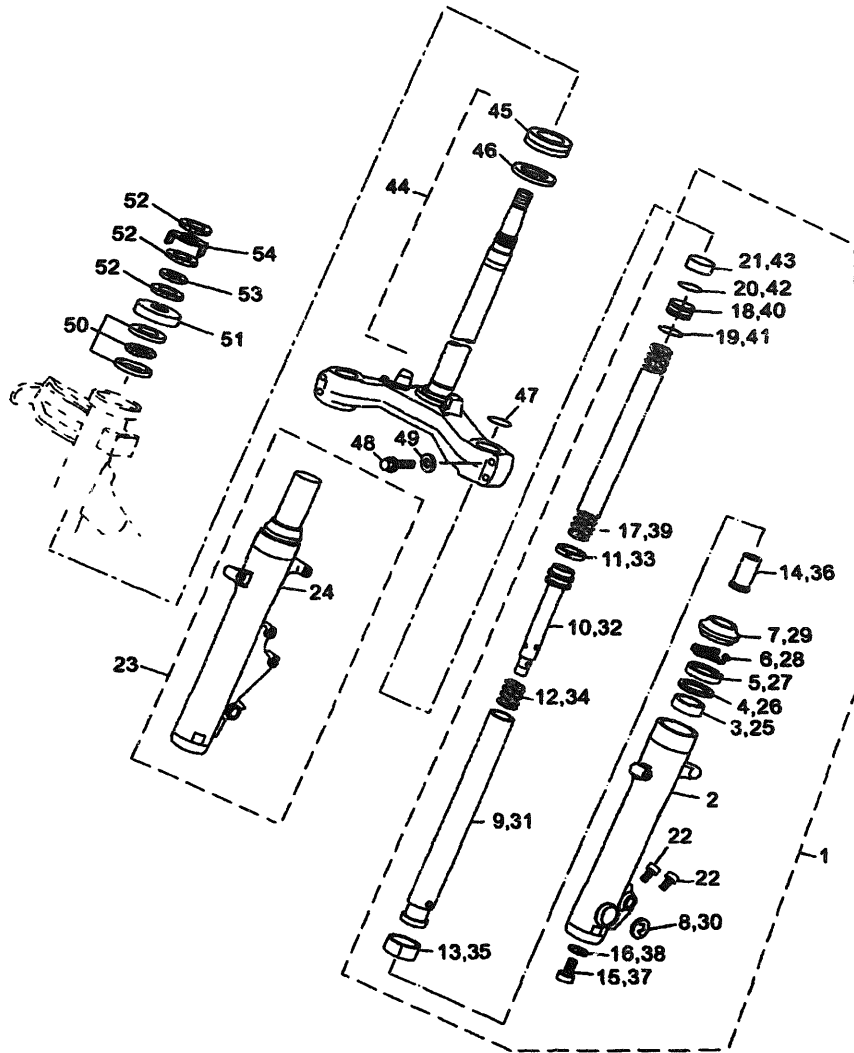


FIG. 20 FRONK FORK

REF. NO.	PART NO.	DESCRIPTION	1C01				REMARKS
28	1B9-F3156-00	.CLIP, OIL SEAL	1				
29	1B9-F3144-00	.SEAL, DUST	1				
30	2C8-F3108-00	.EMBLEM	1				
31	1B9-F3110-00	.INNER TUBE COMP.1	1				
32	1B9-F3170-00	.CYLINDER COMP., FRONT FORK	1				
33	1B9-F3157-00	.RING, PISTON	1				
34	1B9-F3151-00	.SPRING, REBOUND	1				
35	1B9-F3171-00	.PISTON, FRONT FORK	1				
36	1B9-F3173-00	.SPINDLE, TAPER	1				
37	1B9-F3181-00	.BOLT, HEXAGON SOCKET HEAD	1				
38	1B9-F3158-00	.GASKET	1				
39	1B9-F3141-00	.SPRING, FRONT FORK	1				
40	1B9-F3111-00	.BOLT, CAP	1				
41	1B9-F3188-00	.O-RING	1				
42	1B9-F3183-00	.CIRCLIP	1				
43	1B9-F3154-00	.PLUG, INNER TUBE	1				
44	1B9-F3340-00	UNDER BRACKET COMP.	1				
45	93399-999Y2	.BEARING	1				
46	21L-F3462-00	.SEAL, STEERING	1				
47	1B9-F3153-00	RING, SNAP	2				
48	9701L-08035	BOLT	4				
49	9290L-08200	WASHER	4				
50	93399-99931	BEARING	1				
51	1J7-23415-00	COVER, BALL RACE 1	1				
52	90179-25X00	NUT	3				
53	90202-26X00	WASHER, PLATE	1				
54	5DS-F3418-00	WASHER, SPECIAL	1				



1C01300-D200

CONTENTS

CYLINDER	B2
CRANKSHAFT & PISTON	B3
VALVE	B4
CAMSHAFT & CHAIN	B5
WATER PUMP	B6
RADIATOR & HOSE	B7
OIL PUMP	B9
INTAKE	B10
CARBURETOR	B11
EXHAUST	B13
CRANKCASE	B15
CRANKCASE COVER 1	C3
STARTER	C5
CLUTCH	C6
TRANSMISSION	C8
FRAME	C9
FENDER	C11
SIDE COVER	C12
REAR ARM & SUSPENSION	C13
FRONK FORK	C14
FUEL TANK	D2
SEAT	D4
FRONT WHEEL	D6
FRONT BRAKE CALIPER	D7
REAR WHEEL	D8
REAR BRAKE CALIPER	D9
STEERING HANDLE & CABLE	D10
FRONT MASTER CYLINDER	D12
STAND & FOOTREST	D14
LEG SHIELD	E2
GENERATOR	E4
STARTING MOTOR	E5
FLASHER LIGHT	E6
METER	E7

HEADLIGHT	E8
TAILLIGHT	E9
HANDLE SWITCH & LEVER	E10
ELECTRICAL 1	E11
ELECTRICAL 2	E12

NUMERICAL INDEX	M1
-----------------------	----

CONTENTS

CYLINDER	B2
CRANKSHAFT & PISTON	B3
VALVE	B4
CAMSHAFT & CHAIN	B5
WATER PUMP	B6
RADIATOR & HOSE	B7
OIL PUMP	B9
INTAKE	B10
CARBURETOR	B11
EXHAUST	B13
CRANKCASE	B15
CRANKCASE COVER 1	C3
STARTER	C5
CLUTCH	C6
TRANSMISSION	C8
FRAME	C9
FENDER	C11
SIDE COVER	C12
REAR ARM & SUSPENSION	C13
FRONK FORK	C14
FUEL TANK	D2
SEAT	D4
FRONT WHEEL	D6
FRONT BRAKE CALIPER	D7
REAR WHEEL	D8
REAR BRAKE CALIPER	D9
STEERING HANDLE & CABLE	D10
FRONT MASTER CYLINDER	D12
STAND & FOOTREST	D14
LEG SHIELD	E2
GENERATOR	E4
STARTING MOTOR	E5
FLASHER LIGHT	E6
METER	E7

HEADLIGHT	E8
TAILLIGHT	E9
HANDLE SWITCH & LEVER	E10
ELECTRICAL 1	E11
ELECTRICAL 2	E12
NUMERICAL INDEX	M1

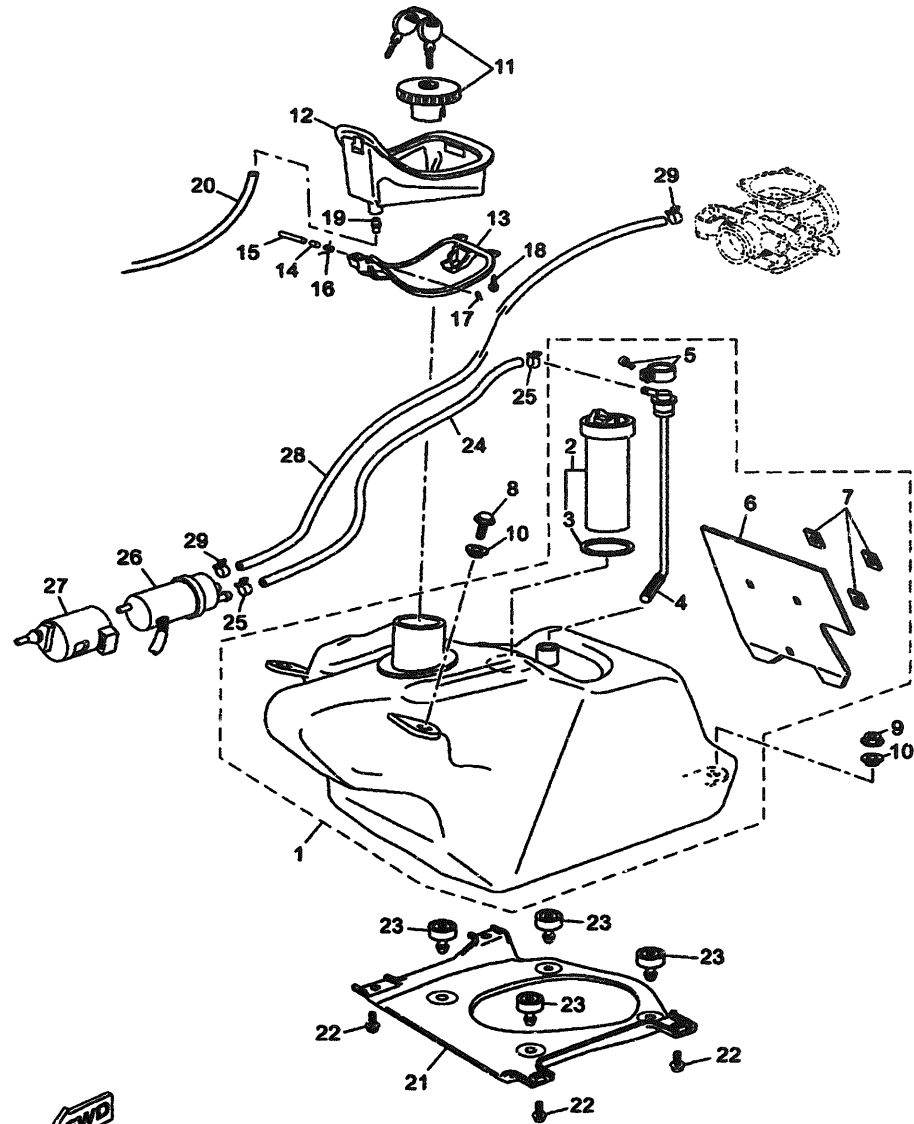


FIG. 21 FUEL TANK

REF. NO.	PART NO.	DESCRIPTION	1C01					REMARKS
1	1C0-F4110-00	FUEL TANK COMP.	1					
2	1C0-H5752-00	.SENDER UNIT ASSY, FUEL METER	1					
3	1C0-H5753-00	..GASKET, SENDER UNIT	1					
4	1B9-F4112-00	.PIPE	1					
5	1C0-F4135-00	.CLAMP 1	1					
6	1B9-F416G-00	.INSULATOR, FUEL TANK 2	1					
7	1B9-F411M-00	.CLIP	2					
8	9700N-06016	BOLT	2					
9	9570N-06500	NUT, FLANGE	4					
10	90387-06500	COLLAR	4					
11	1B9-WF461-00	TANK CAP BODY ASSY	1					
12	1B9-F414A-00	COVER, FILLER	1					
13	1B9-F178L-00	GUIDE 1	1					
14	90387-04X00	COLLAR	1					
15	90240-04X00	PIN, CLEVIS	1					
16	90508-08X00	SPRING, TORSION	1					
17	90468-10004	CLIP	1					
18	90167-04X00	SCREW, TAPPING	4					
19	90387-06X27	COLLAR	1					
20	1B9-F4318-00	PIPE, OVERFLOW	1					
21	1B9-F4191-00	BRACKET, FUEL TANK 1	1					
22	95827-06012	BOLT, FLANGE	4					
23	2RN-F4741-00	PAD, SEAT	2					
24	1C0-F4311-00	PIPE, FUEL 1	1					
25	90467-10038	CLIP	2					
26	2GV-13907-00	FUEL PUMP COMP.	1					
27	5GM-24492-00	BUSH, FULEL PUMP	1					



1C01300-D210

D2



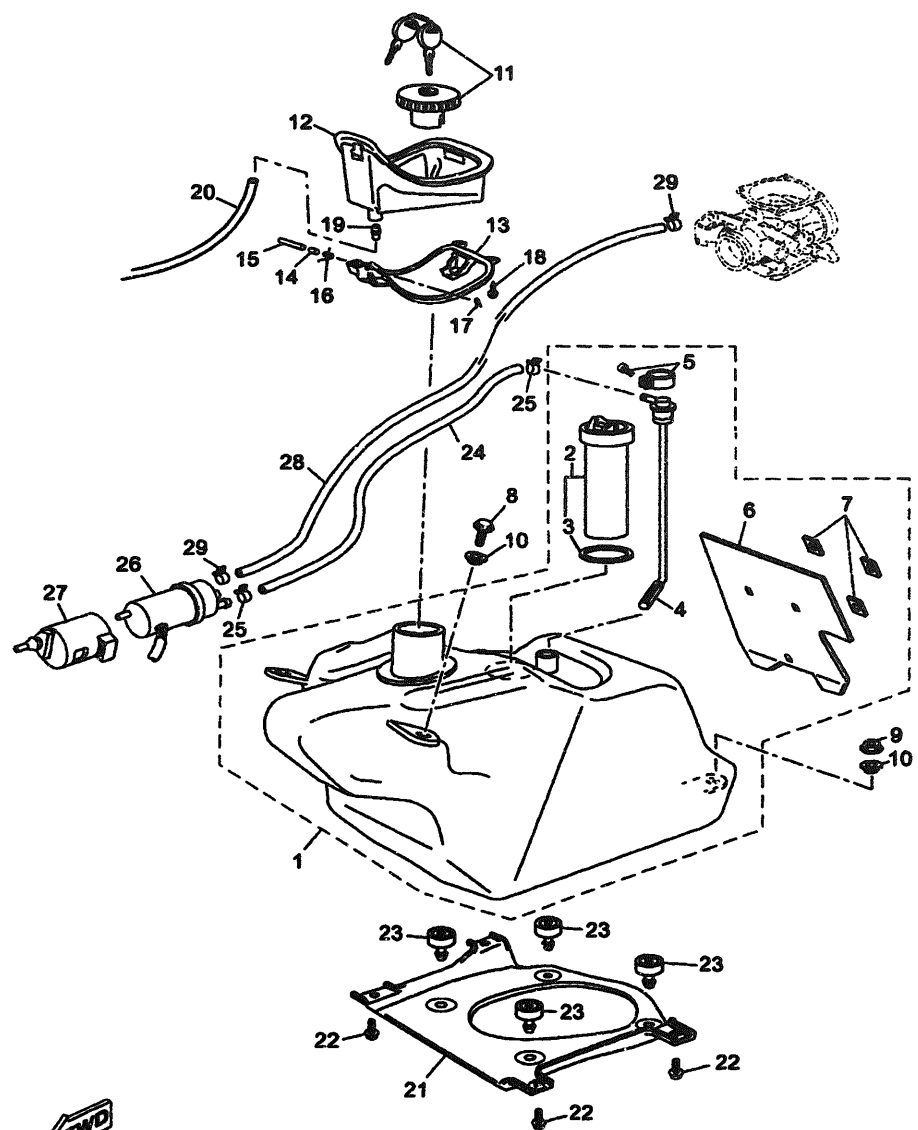


FIG. 21 FUEL TANK

REF. NO.	PART NO.	DESCRIPTION	1C01					REMARKS
28	1C0-F4312-00	PIPE 2	1					
29	90467-10038	CLIP	2					

1C01300-D210

D3

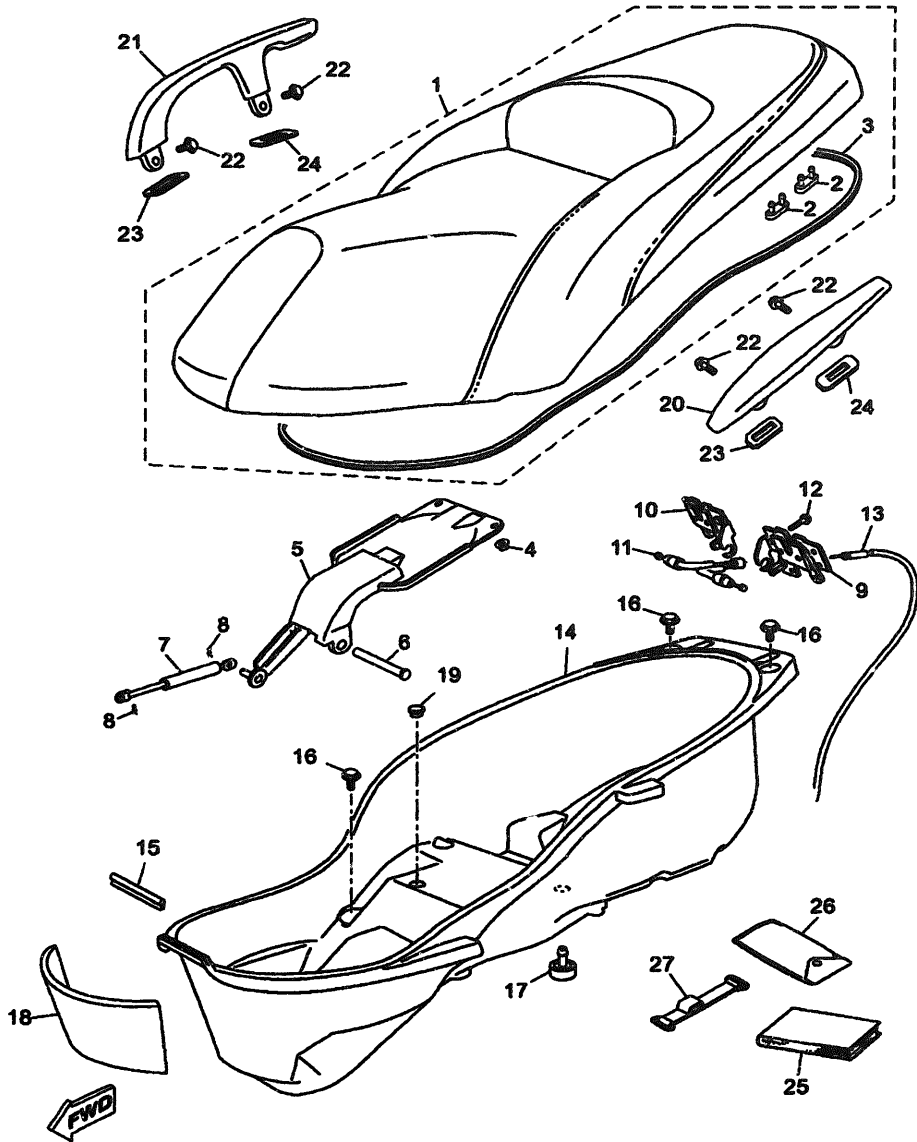


FIG. 22 SEAT

REF. NO.	PART NO.	DESCRIPTION	1C01				REMARKS
1	1B9-F4730-00	DOUBLE SEAT ASSY	1				
2	1B9-F4741-00	.PAD, SEAT	6				
3	1B9-F475M-00	.SEAL	1				
4	90185-06823	NUT, SELF-LOCKING	4				
5	1B9-F4772-10	HINGE ASSY	1				
6	90241-10015	PIN	1				
7	1B9-F478G-10	STOPPER	1				
8	90468-10050	CLIP	1				
9	1B9-F471B-00	BODY, SEAT LOCK 2	1				
10	1B9-F478T-00	BODY, SEAT LOCK 1	1				
11	1B9-F478D-00	SEAT LOCK CABLE ASSY	1				
12	95027-06012	BOLT, FLANGE	4				
13	1B9-F478E-00	CABLE, SEAT LOCK	1				
14	1B9-F473R-00	BOX 1	1				
15	1B9-F475M-10	SEAL	1				
16	90109-06X05	BOLT	4				
17	2RN-F4741-00	PAD, SEAT	2				
18	1B9-F476V-00	PROTECTOR,2	1				
19	90338-09800	PLUG	1				
20	1B9-F474A-00	ASSIST, GRIP	1				
21	1B9-F474W-00	ASSIST,GRIP 2	1				
22	9581M-08032	BOLT. FLANGE	4				
23	1B9-F474M-10	WASHER RUBBER 1	2				
24	1B9-F474U-10	WASHER RUBBER	2				
25	1C0-F8199-E0	MANUAL,OWNER'S	1				
	1C0-F8199-G0	MANUAL,OWNER'S	1				
	1C0-F8199-H0	MANUAL,OWNER'S	1				

1C01300-D220



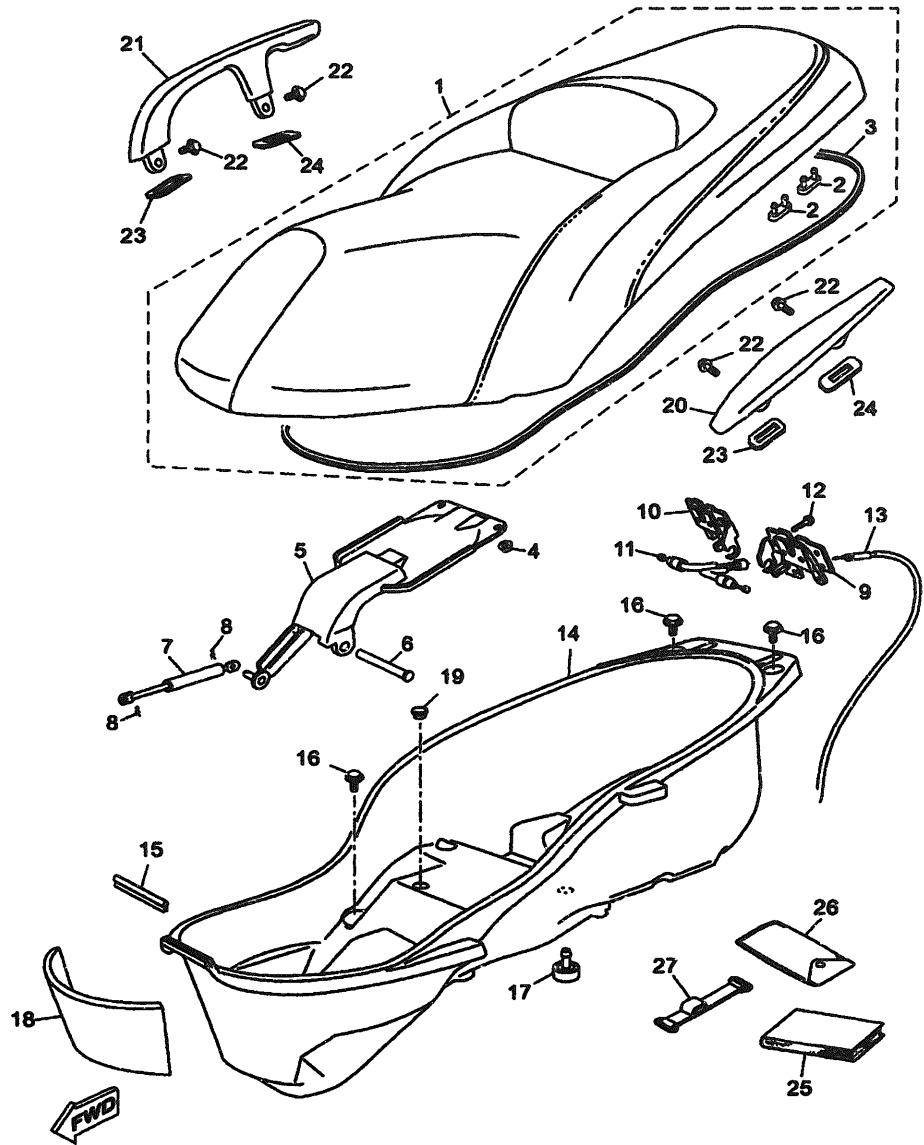


FIG. 22 SEAT

REF. NO.	PART NO.	DESCRIPTION	1C01				REMARKS
26	1C0-F8100-00	TOOL KIT	1				
27	1TK-H2131-00	BAND, BATTERY	1				

1C01300-D220

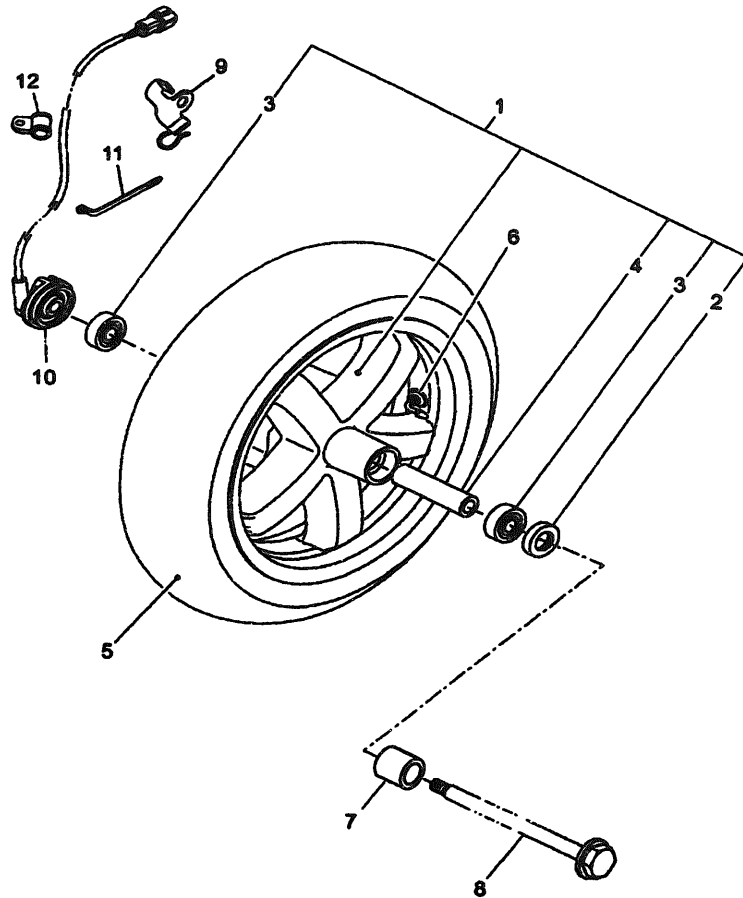


FIG. 23 FRONT WHEEL

REF. NO.	PART NO.	DESCRIPTION	1C01					REMARKS
1	1B9-F5160-00	CAST WHEEL, FRONT	1					
2	93101-22800	.OIL SEAL	1					
3	93306-202YU	.BEARING	2					
4	1B9-F5117-00	.SPACER, BEARING	1					
5	94112-15X00	TIRE	1					
6	3VL-F5170-10	AIR VALVE ASSY	1					
7	90387-15X09	COLLAR	1					
8	1B9-F5181-00	AXLE, WHEEL	1					
9	1B9-F3317-00	HOLDER, CABLE	1					
10	1S6-H3756-00	SENSOR, UNIT	1					
11	90464-50X05	CLAMP	1					
12	90464-05X00	CLAMP	1					



1C01300-D230

D6

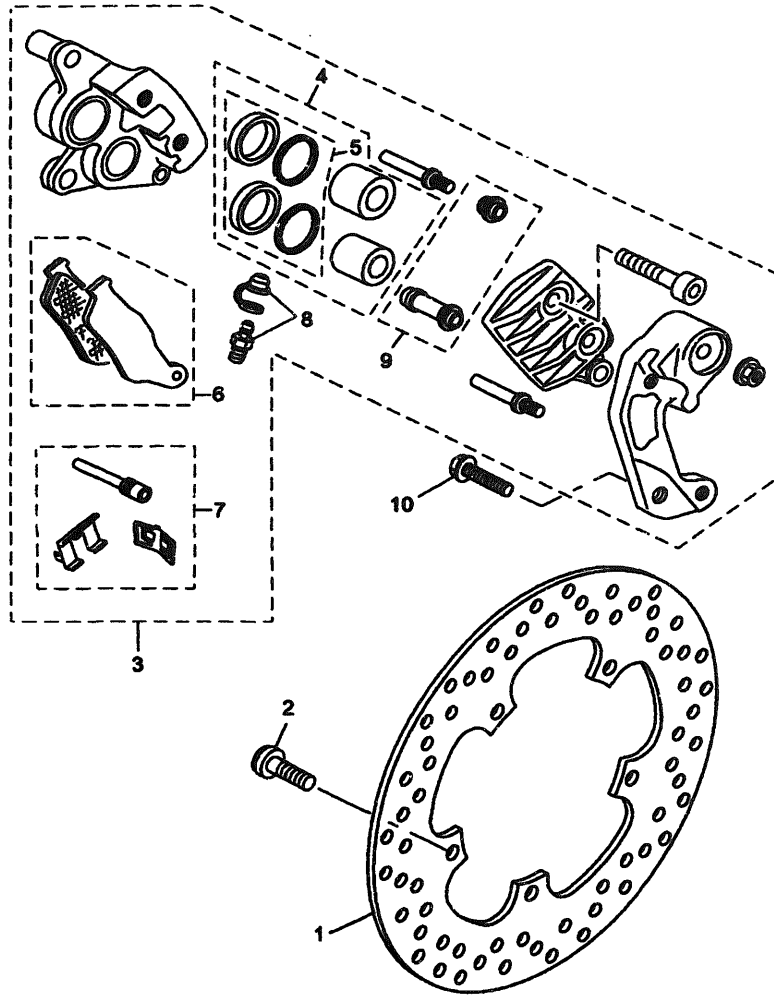


FIG. 24 FRONT BRAKE CALIPER

REF. NO.	PART NO.	DESCRIPTION	1C01				REMARKS
1	1B9-F582U-00	DISK, BRAKE (RIGHT)	1				
2	90109-085F3	BOLT	5				
3	1B9-F580U-00	CALIPER ASSY (RIGHT)	1				
4	1B9-W0057-00	.PISTON ASSY, CALIPER	1				
5	1B9-W0047-00	.CALIPER SEAL KIT	1				
6	1B9-W0045-00	.BRAKE PAD KIT	1				
7	1B9-WF582-00	.SUPPORT PAD KIT	1				
8	1B9-W0048-00	.BLEED SCREW KIT	1				
9	1B9-WF591-00	.BOOT, CALIPER KIT	1				
10	9581L-08030	BOLT, FLANGE	2				



1C01300-D240

D7

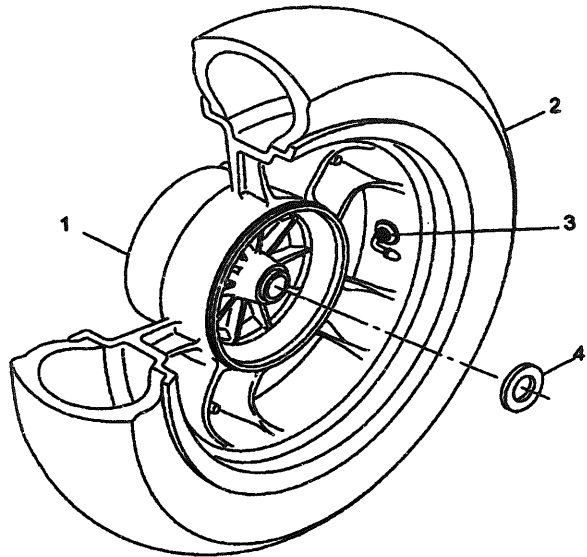


FIG. 25 REAR WHEEL

REF. NO.	PART NO.	DESCRIPTION	1C01					REMARKS
1	1B9-F5338-00	CAST WHEEL, REAR	1					
2	94114-14X00	TIRE	1					
3	3VL-F5170-10	AIR VALVE ASSY	1					
4	90201-22X00	WASHER, PLATE	1					



1C01300-D250

D8

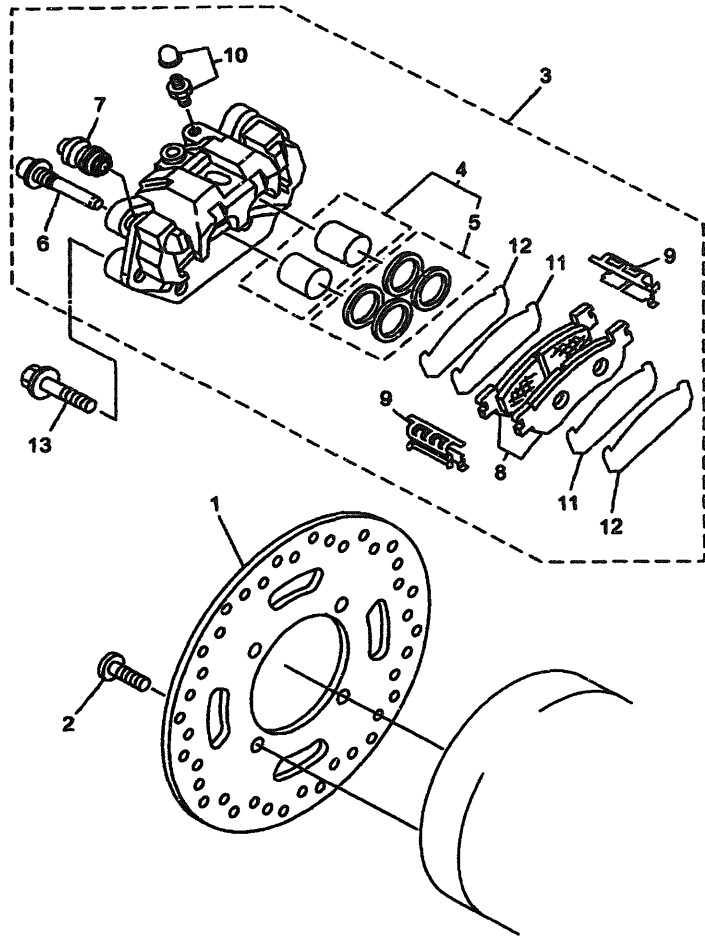


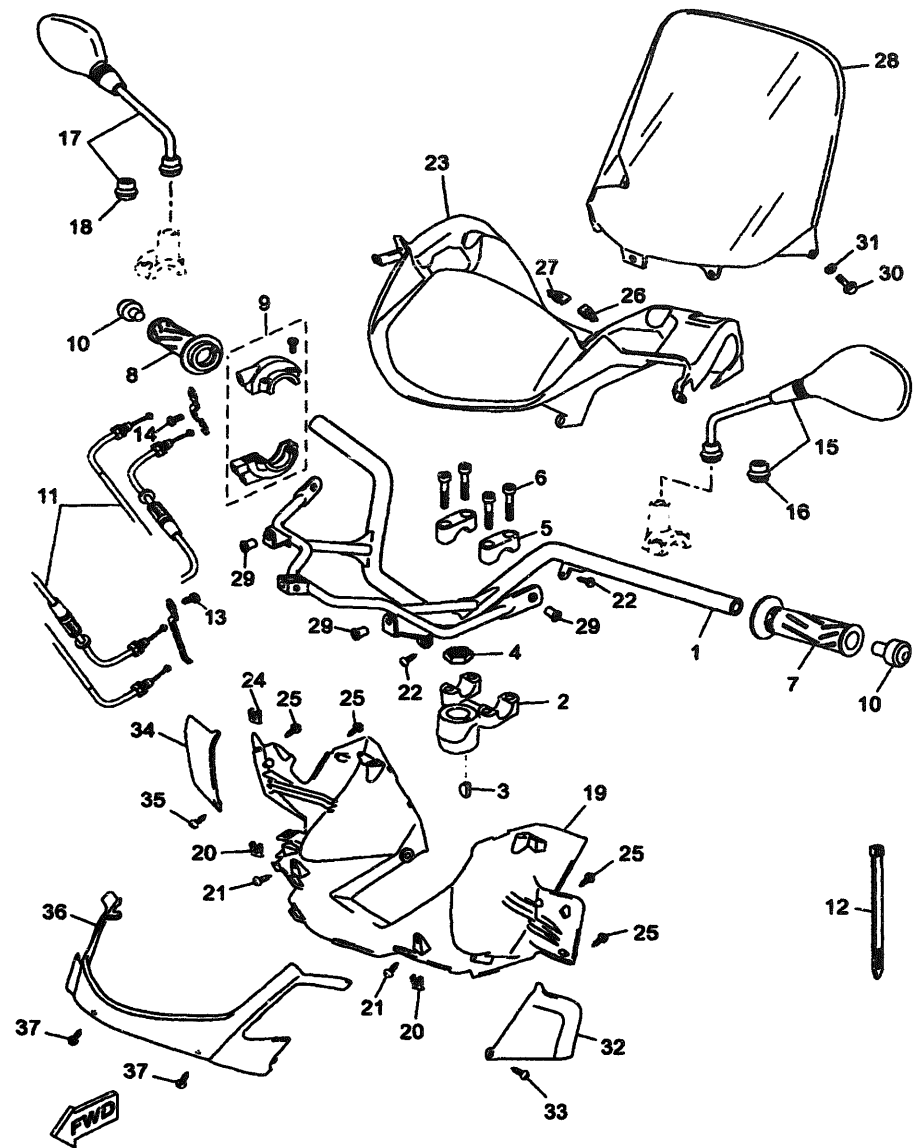
FIG. 26 REAR BRAKE CALIPER

REF. NO.	PART NO.	DESCRIPTION	1C01				REMARKS
1	1B9-F582W-00	DISK, REAR BRAKE 2	1				
2	90149-08814	SCREW	4				
3	5GM-2580W-01	CALIPER ASSY, REAR 2	1				
4	5GM-W0057-00	.PISTON ASSY, CALIPER	1				
5	4TT-W0047-00	.CALIPER SEAL KIT	1				
6	5PW-25914-00	.PIN, SLIDE	2				
7	4TT-25937-00	.BOOT 2	2				
8	5GM-W0048-00	.BRAKE PAD KIT 2	1				
9	4TT-25919-00	.SUPPORT, PAD	2				
10	5GM-W0048-01	.BLEED SCREW KIT	1				
11	5EB-25828-00	.SHIM, CALIPER	2				
12	5GM-25828-00	.SHIM, CALIPER	2				
13	90105-08121	BOLT, FLANGE	2				



1C01300-D260

D9



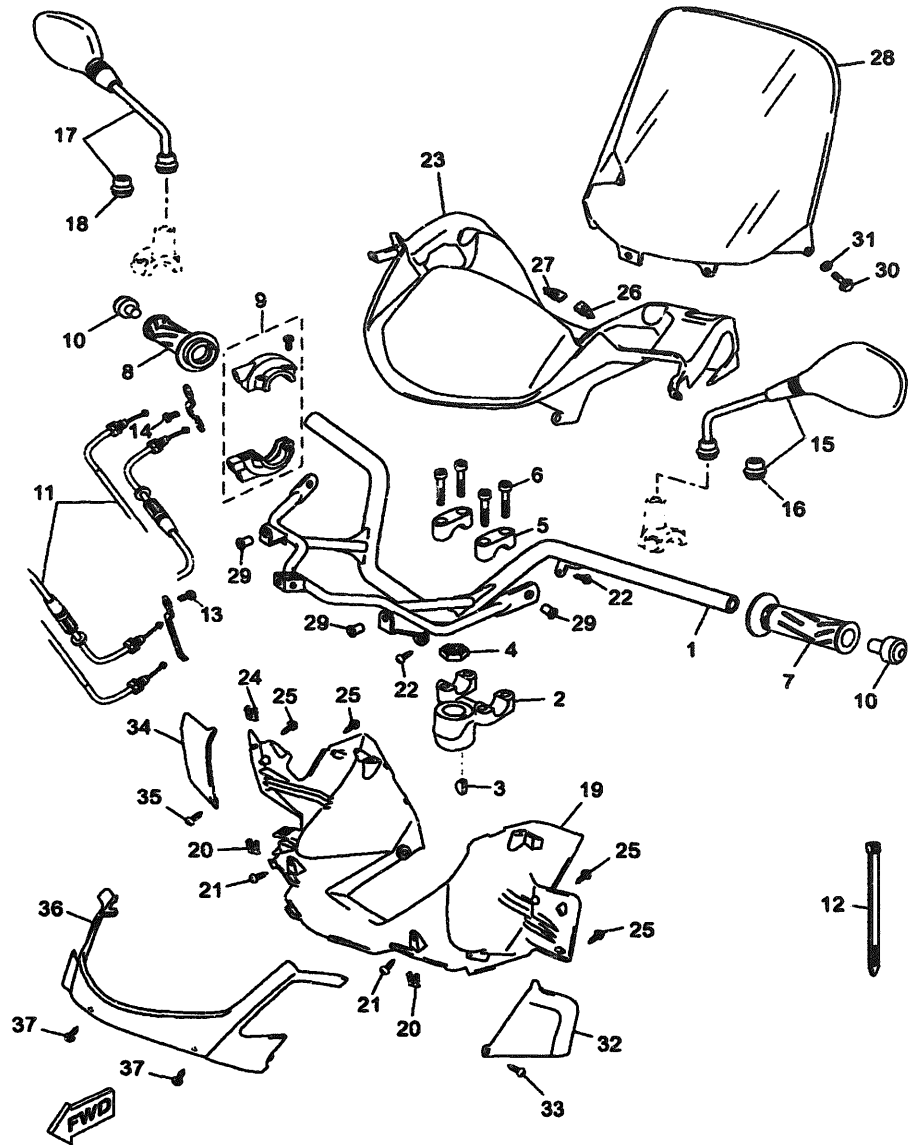
1C01300-D270

FIG. 27 STEERING HANDLE & CABLE

REF. NO.	PART NO.	DESCRIPTION	1C01				REMARKS
1	1B9-F6110-00	HANDLE COMP.	1				
2	1B9-23442-00	HOLDER, HANDLE LOWER	1				
3	90280-03017	KEY, WOODRUFF	1				
4	90170-20386	NUT	1				
5	4H7-23441-10	HOLDER, HANDLE UPPER	2				
6	91317-08030	BOLT	4				
7	4YR-26241-02	GRIP (LEFT)	1				
8	4YR-26240-02	GRIP ASSY	1				
9	1B9-F6270-00	CABLE CONNECTOR CAP ASSY	1				
10	51J-26246-01	END, GRIP	2				
11	1C0-F6301-00	THROTTLE CABLE ASSY	1				
12	90464-50X03	CLAMP	2				
13	9131L-05010	BOLT	2				
14	9850M-05010	SCREW, PAN HEAD	1				
15	1B9-F6280-00	REAR VIEW MIRROR ASSY (LEFT)	1				
16	1B9-F629T-00	.BOOT 1	1				
17	1B9-F6290-00	REAR VIEW MIRROR ASSY (RIGHT)	1				
18	1B9-F629U-00	.BOOT 2	1				
19	1B9-F6215-00	COVER, LOWER	1				
20	5DS-F8317-00	NUT, EMBLEM	6				
21	90167-04X00	SCREW, TAPPING	2				
22	90167-04X00	SCREW, TAPPING	4				
23	1B9-F6213-00	COVER, UPPER	1				
24	5DS-F8317-00	NUT, EMBLEM	4				
25	90167-03X00	SCREW, TAPPING	4				
26	1B9-F635H-00	CAP	1				
27	1B9-F635J-00	CAP 2	1				

D10

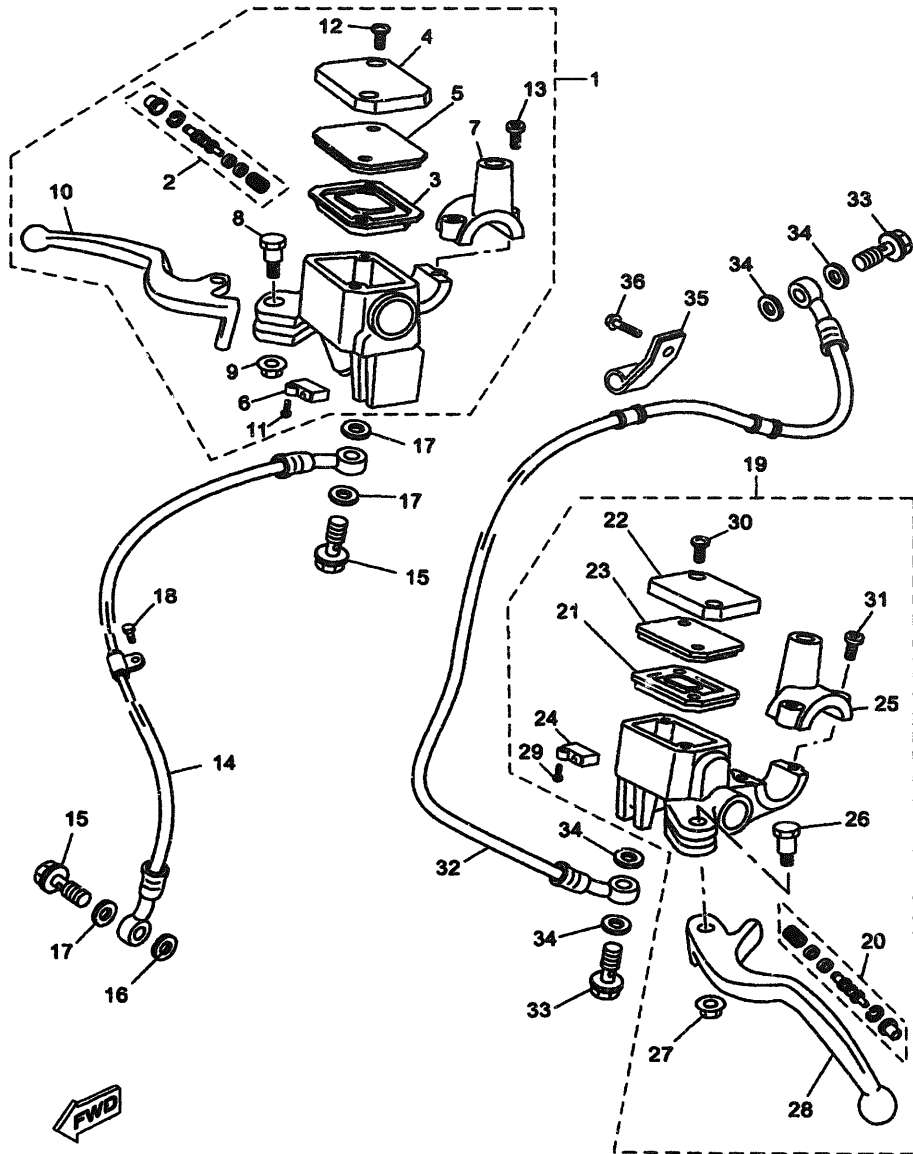




1C01300-D270

FIG. 27 STEERING HANDLE & CABLE

REF. NO.	PART NO.	DESCRIPTION	1C01				REMARKS
28	1B9-F6234-00	SCREEN	1				
29	90179-05523	NUT	4				
30	90119-05193	BOLT, WITH WASHER	5				
31	90202-05180	WASHER, PLATE	5				
32	1B9-F6141-00	GUARD, BRUSH 1	1				
33	90167-04X00	SCREW, TAPPING	1				
34	1B9-F6142-00	GUARD, BRUSH 2	1				
35	90167-04X00	SCREW, TAPPING	1				
36	1B9-F6231-00-P0	COVER, HANDLE FRONT 1	1				SMX
37	90167-04X00	SCREW, TAPPING	2				



1C01300-D280

FIG. 28 FRONT MASTER CYLINDER

REF. NO.	PART NO.	DESCRIPTION	1C01				REMARKS
1	1B9-F583T-00	MASTER CYLINDER ASSY	1				
2	1B9-W0041-10	.CYLINDER KIT, MASTER	1				
3	1B9-F5854-00	.DIAPHRAGM, RESERVOIR	1				
4	1B9-F5852-00	.CAP, RESERVOIR	1				
5	1B9-F5855-00	.BUSH,DIAPHRAGM	1				
6	1B9-H2530-00	.STOP SWITCH ASSY	1				
7	1B9-F5867-10	.BRACKET, MASTER CYLINDER	1				
8	1B9-H3945-00	.BOLT, LEVER	1				
9	95707-06500	.NUT, FLANGE	1				
10	1B9-H3912-00	.LEVER 1	1				
11	97607-04216	.SCREW,WITH WASHER	1				
12	98780-04012	.SCREW, FLAT HEAD	2				
13	92017-06025	.BOLT, BUTTON HEAD	2				
14	1B9-F5872-10	HOSE, BRAKE 1	1				
15	90401-10X04	BOLT, UNION	2				
16	1B9-F5844-10	WASHER, LOCK	1				
17	90201-10118	WASHER, PLATE	3				
18	9701L-05012	BOLT	1				
19	1B9-F583V-00	RR. MASTER CYLINDER ASSY.	1				
20	1B9-W0041-00	.CYLINDER KIT, MASTER	1				
21	1B9-F5854-00	.DIAPHRAGM, RESERVOIR	1				
22	1B9-F5852-00	.CAP, RESERVOIR	1				
23	1B9-F5855-00	.BUSH,DIAPHRAGM	1				
24	1B9-H2550-00	.ENGINE STOP SWITCH ASSY	1				
25	1B9-F5867-00	.BRACKET, MASTER CYLINDER	1				
26	1B9-H3945-00	.BOLT, LEVER	1				
27	95707-06500	.NUT, FLANGE	1				



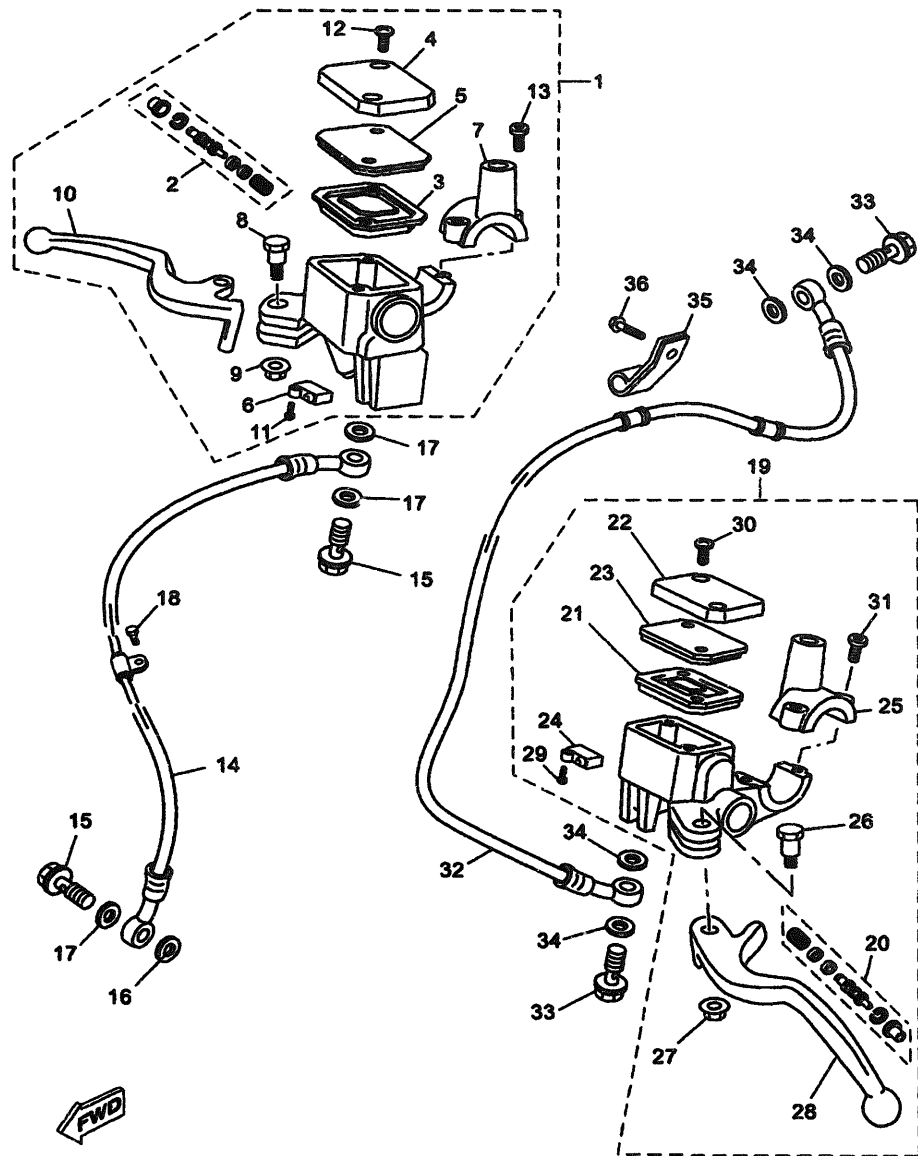
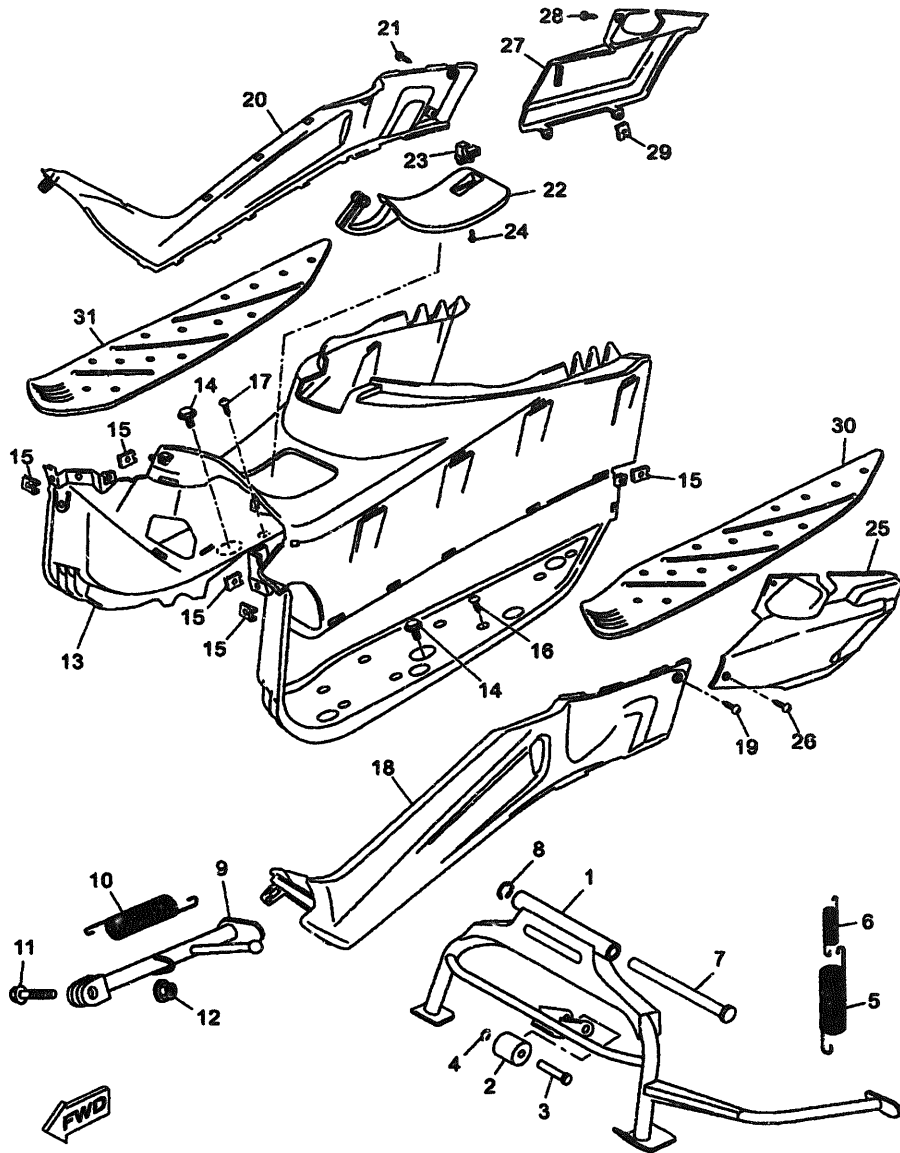


FIG. 28 FRONT MASTER CYLINDER

REF. NO.	PART NO.	DESCRIPTION	1C01				REMARKS
28	1B9-H3922-00	.LEVER 2	1				
29	97607-04216	.SCREW,WITH WASHER	1				
30	98780-04012	.SCREW, FLAT HEAD	2				
31	92017-06025	.BOLT, BUTTON HEAD	2				
32	1C0-F5873-10	HOSE, BRAKE 2	1				
33	90401-10X04	BOLT, UNION	2				
34	90201-10118	WASHER, PLATE	4				
35	1B9-F587A-00	HOLDER, BRAKE HOSE	2				
36	9580M-06012	BOLT, FLANGE	2				

1C01300-D280

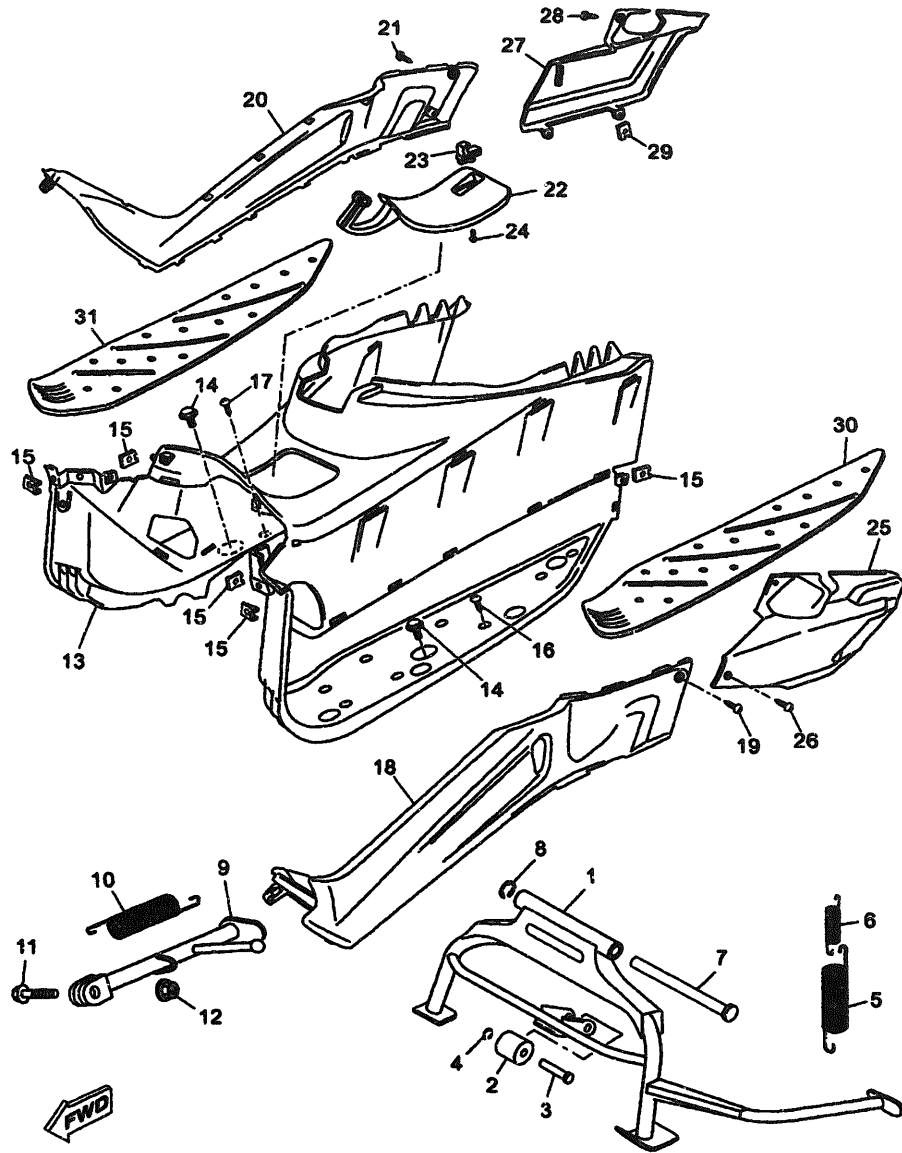


1C01300-D280

FIG. 29 STAND & FOOTREST

REF. NO.	PART NO.	DESCRIPTION	1C01					REMARKS
1	1C0-F7111-00	STAND, MAIN	1					
2	4HC-27114-00	STOPPER, MAIN STAND	1					
3	4HC-27112-00	SHAFT, MAIN STAND	1					
4	99001-04600	CIRCLIP	1					
5	90506-40508	SPRING, TENSION	1					
6	90506-23509	SPRING, TENSION	1					
7	58K-27112-02	SHAFT, MAIN STAND	1					
8	93430-12008	CIRCLIP	1					
9	1B9-F7311-00	STAND, SIDE	1					
10	90506-26X01	SPRING, TENSION	1					
11	90109-10473	BOLT	1					
12	90185-10037	NUT, SELF-LOCKING	1					
13	1B9-F7481-00	BOARD, FOOTREST	1					
14	90119-06118	BOLT, WITH WASHER	4					
15	5DS-F8317-00	NUT, EMBLEM	6					
16	90167-04X00	SCREW, TAPPING	5					
17	90167-04X00	SCREW, TAPPING	5					
18	1B9-F7413-00-LK	COVER, FOOTREST	1					FIS
19	90167-04X00	SCREW, TAPPING	1					
20	1B9-F7423-00-LK	COVER, FOOTREST	1					FIS
21	90167-04X00	SCREW, TAPPING	1					
22	1B9-F74A8-00	LID, FUEL	1					
23	5GJ-21780-01	LOCK ASSY	1					
24	9770M-40510	SCREW, TAPPING	2					
25	1B9-F7486-00	COVER 1	1					
26	90167-04X00	SCREW, TAPPING	3					
27	1B9-F7487-00	COVER 2	1					





1C01300-D290

FIG. 29 STAND & FOOTREST

REF. NO.	PART NO.	DESCRIPTION	1C01				REMARKS
28	90167-04X00	SCREW, TAPPING	1				
29	5DS-F8317-00	NUT, EMBLEM	2				
30	1B9-F7483-00	MAT 1	1				
31	1B9-F7484-00	MAT 2	1				

CONTENTS

CYLINDER	B2
CRANKSHAFT & PISTON	B3
VALVE	B4
CAMSHAFT & CHAIN	B5
WATER PUMP	B6
RADIATOR & HOSE	B7
OIL PUMP	B9
INTAKE	B10
CARBURETOR	B11
EXHAUST	B13
CRANKCASE	B15
CRANKCASE COVER 1	C3
STARTER	C5
CLUTCH	C6
TRANSMISSION	C8
FRAME	C9
FENDER	C11
SIDE COVER	C12
REAR ARM & SUSPENSION	C13
FRONK FORK	C14
FUEL TANK	D2
SEAT	D4
FRONT WHEEL	D6
FRONT BRAKE CALIPER	D7
REAR WHEEL	D8
REAR BRAKE CALIPER	D9
STEERING HANDLE & CABLE	D10
FRONT MASTER CYLINDER	D12
STAND & FOOTREST	D14
LEG SHIELD	E2
GENERATOR	E4
STARTING MOTOR	E5
FLASHER LIGHT	E6
METER	E7

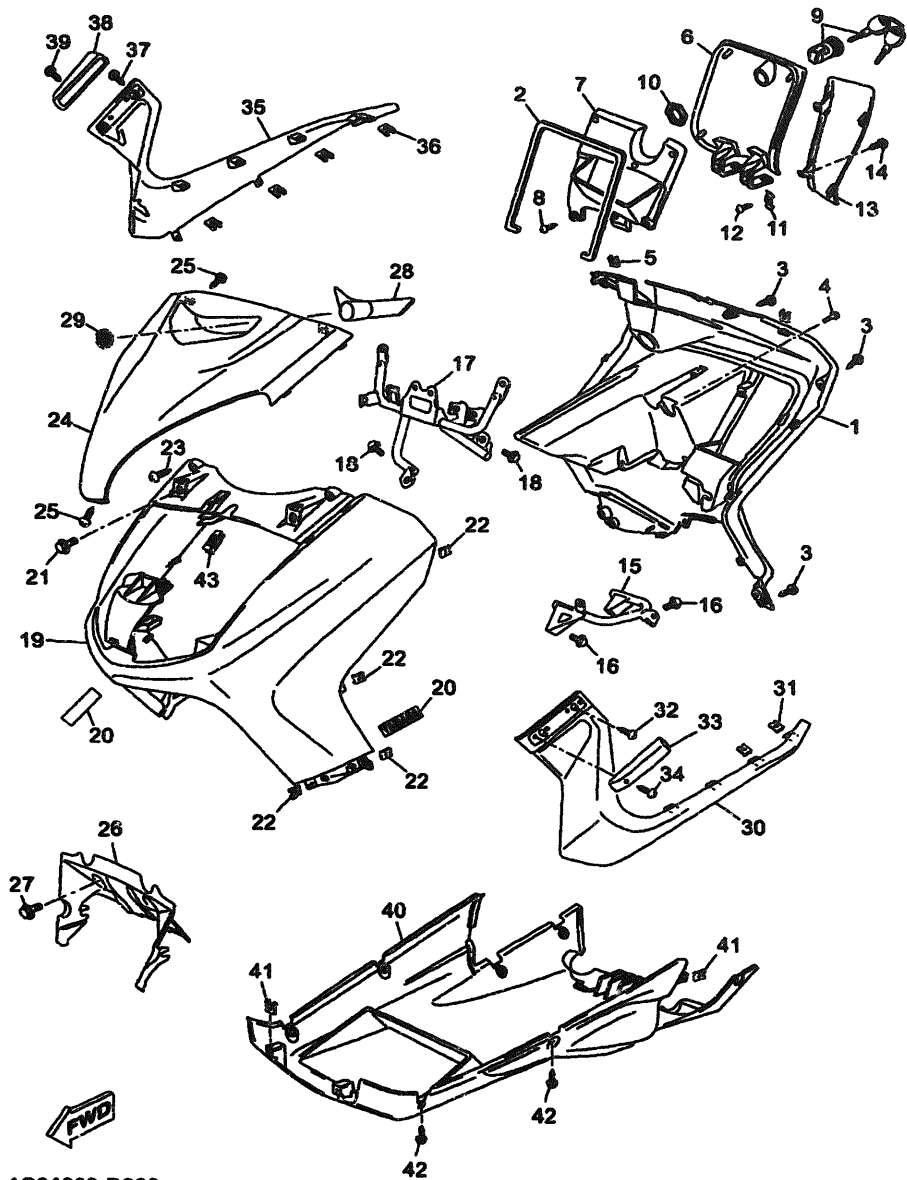
HEADLIGHT	E8
TAILLIGHT	E9
HANDLE SWITCH & LEVER	E10
ELECTRICAL 1	E11
ELECTRICAL 2	E12

NUMERICAL INDEX	M1
-----------------------	----

CONTENTS

CYLINDER	B2
CRANKSHAFT & PISTON	B3
VALVE	B4
CAMSHAFT & CHAIN	B5
WATER PUMP	B6
RADIATOR & HOSE	B7
OIL PUMP	B9
INTAKE	B10
CARBURETOR	B11
EXHAUST	B13
CRANKCASE	B15
CRANKCASE COVER 1	C3
STARTER	C5
CLUTCH	C6
TRANSMISSION	C8
FRAME	C9
FENDER	C11
SIDE COVER	C12
REAR ARM & SUSPENSION	C13
FRONK FORK	C14
FUEL TANK	D2
SEAT	D4
FRONT WHEEL	D6
FRONT BRAKE CALIPER	D7
REAR WHEEL	D8
REAR BRAKE CALIPER	D9
STEERING HANDLE & CABLE	D10
FRONT MASTER CYLINDER	D12
STAND & FOOTREST	D14
LEG SHIELD	E2
GENERATOR	E4
STARTING MOTOR	E5
FLASHER LIGHT	E6
METER	E7

HEADLIGHT	E8
TAILLIGHT	E9
HANDLE SWITCH & LEVER	E10
ELECTRICAL 1	E11
ELECTRICAL 2	E12
NUMERICAL INDEX	M1

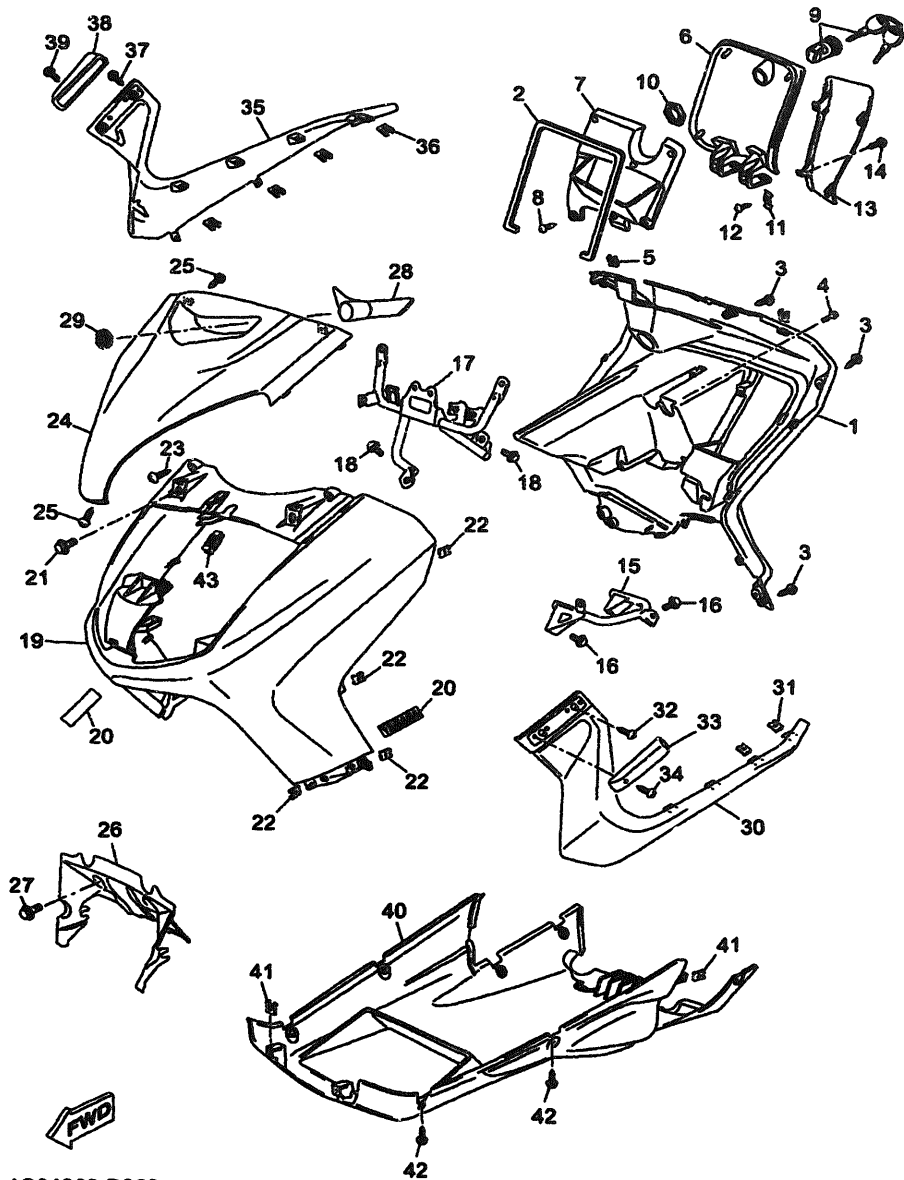


1C01300-D300

FIG. 30 LEG SHIELD

REF. NO.	PART NO.	DESCRIPTION	1C01				REMARKS
1	1B9-F8311-00	LEG SHIELD 1	1				
2	1B9-F8307-00	SEAL	1				
3	90167-04X00	SCREW, TAPPING	10				
4	90119-06118	BOLT, WITH WASHER	1				
5	5DS-F8317-00	NUT, EMBLEM	4				
6	1B9-F839K-00	LID 1	1				
7	1B9-F8336-00	PLATE	1				
8	90167-03X00	SCREW, TAPPING	6				
9	4MJ-F1780-01	LOCK ASSY	1				
10	4MJ-F1791-00	NUT	1				
11	1B9-F837F-00	HINGE	2				
12	9770M-40512	SCREW, TAPPING	2				
13	1B9-H2129-00	COVER, BATTERY	1				
14	90167-04X00	SCREW, TAPPING	2				
15	1B9-F831T-00	STAY, SUPPORT 1	1				
16	9582M-08012	BOLT, FLANGE	2				
17	1B9-F8321-00	STAY 1	1				
18	9582M-08012	BOLT, FLANGE	2				
19	1B9-F8351-00-P1	BODY, COWLING	1				UR S3
	1B9-F8351-00-P2	BODY, COWLING	1				UR DBNM8
	1B9-F8351-00-P3	BODY, COWLING	1				UR DYM8
	1B9-F8351-00-P4	BODY, COWLING	1				UR RM5
20	99236-00080	EMBLEM, YAMAHA	1				UR A, C, D
	99237-00080	EMBLEM, YAMAHA	1				UR B
21	90109-06X05	BOLT	2				
22	5DS-F8317-00	NUT, EMBLEM	11				
23	90167-04X00	SCREW, TAPPING	2				





1C01300-D300

FIG. 30 LEG SHIELD

REF. NO.	PART NO.	DESCRIPTION	1C01				REMARKS
24	1B9-F8345-00-P0	MOLE 1	1				SMX
25	90167-04X00	SCREW, TAPPING	3				
26	1B9-F835L-00	COVER, COOLER	1				
27	90119-06056	BOLT, WITH WASHER	2				
28	1B9-F836K-00	PANEL, INNER 1	1				
29	5DS-F8368-00	EMBLEM	1				
30	1B9-F171L-00	MOLE, SIDE COVER 1	1				
31	5DS-F8317-00	NUT, EMBLEM	8				
32	90167-04X00	SCREW, TAPPING	1				
33	1B9-F834V-00	PROTECTOR 1	1				
34	90167-04X00	SCREW, TAPPING	1				
35	1B9-F171M-00	MOLE, SIDE COVER 2	1				
36	5DS-F8317-00	NUT, EMBLEM	8				
37	90167-04X00	SCREW, TAPPING	1				
38	1B9-F834V-00	PROTECTOR 1	1				
39	90167-04X00	SCREW, TAPPING	1				
40	1B9-F8395-00	COVER, UNDER	1				
41	5DS-F8317-00	NUT, EMBLEM	3				
42	90167-04X00	SCREW, TAPPING	4				
43	1C0-F8116-00	TOOL, SPECIAL	1				

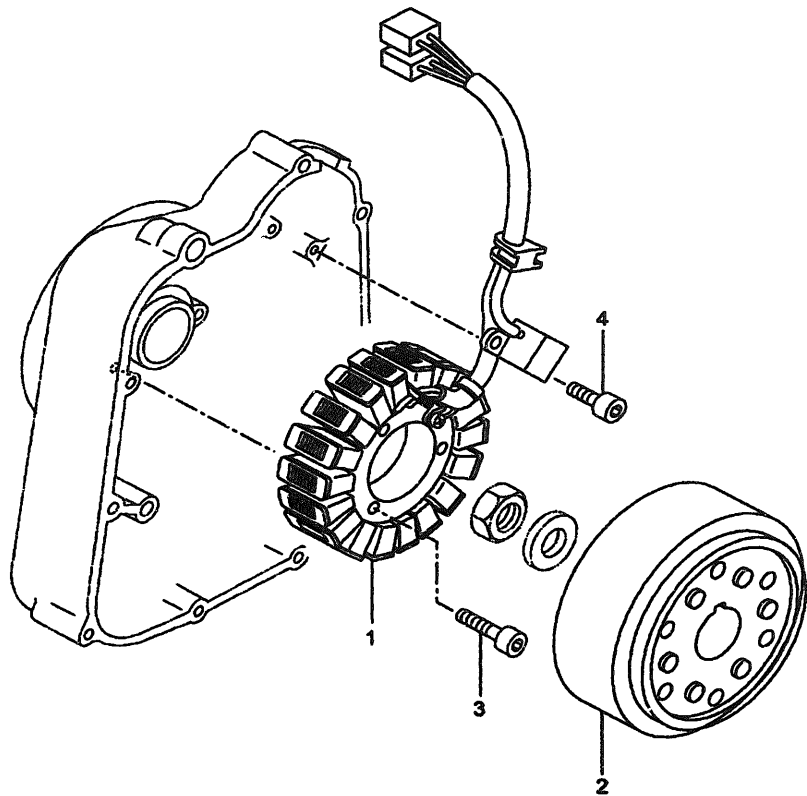


FIG. 31 GENERATOR

REF. NO.	PART NO.	DESCRIPTION	1C01					REMARKS
1	1C0-H1410-00	STATOR ASSY	1					
2	1C0-H1450-00	ROTOR ASSY	1					
3	90110-06X31	BOLT, HEXAGON SOCKET HEAD	3					
4	90110-05X02	BOLT, HEXAGON SOCKET HEAD	2					



1C01300-D310

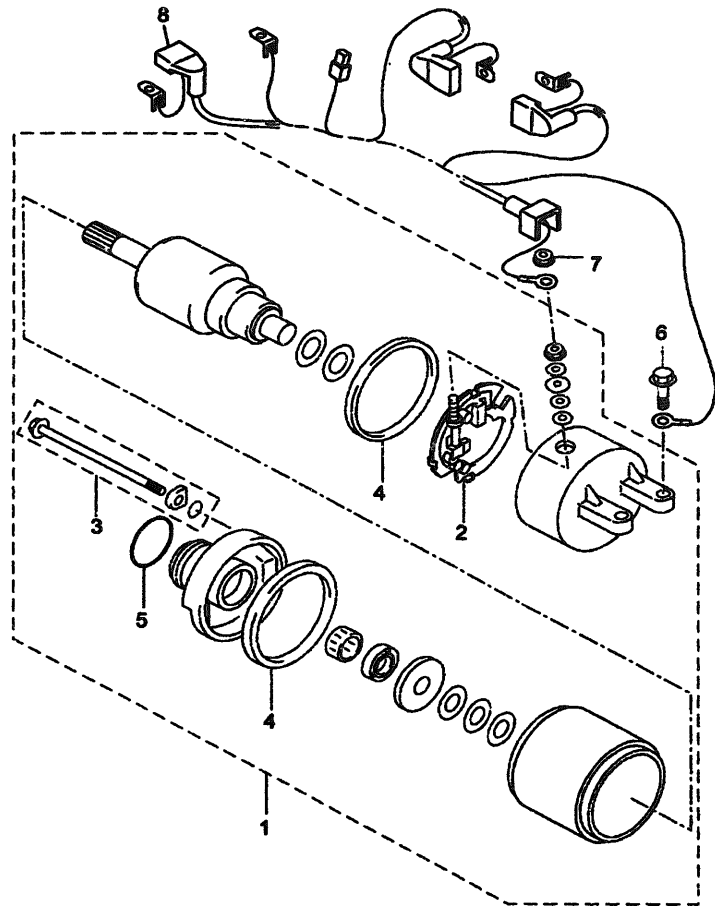


FIG. 32 STARTING MOTOR

REF. NO.	PART NO.	DESCRIPTION	1C01					REMARKS
1	1C0-H1800-00	STARTING MOTOR ASSY	1					
2	3KS-81840-00	.BRUSH HOLDER ASSY	1					
3	3WP-81826-00	.BOLT	2					
4	11H-81844-00	GASKET	2					
5	1FK-81847-00	.O-RING	1					
6	90105-06X05	BOLT, FLANGE	2					
7	4XV-8182A 00	NUT	1					
8	1B9-H1815-00	CORD, STARTER MOTOR	1					



1C01300-D320

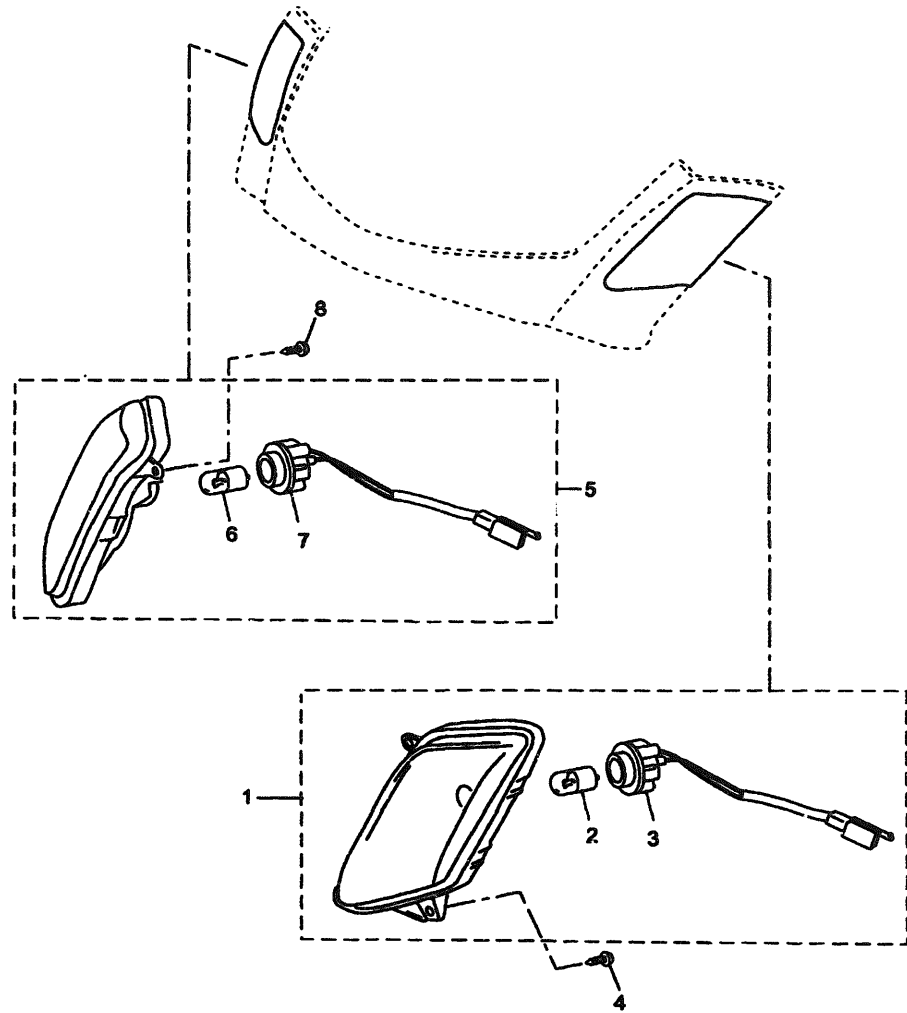


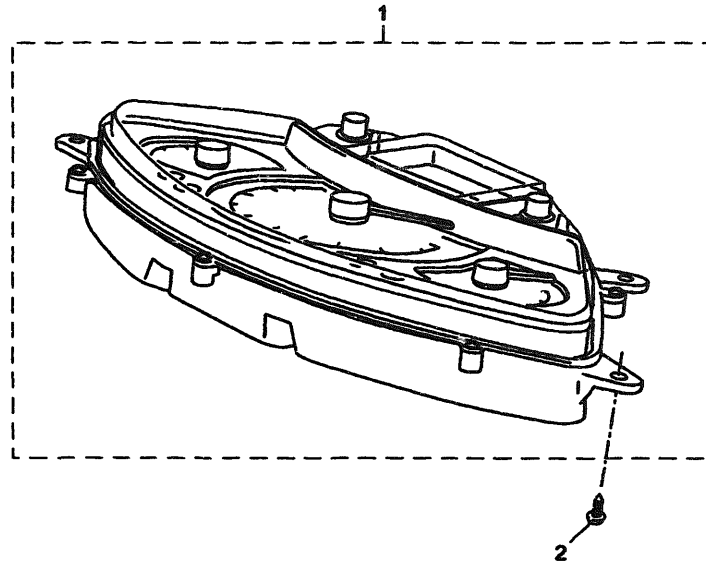
FIG. 33 FLASHER LIGHT

REF. NO.	PART NO.	DESCRIPTION	1001				REMARKS
1	1B9-H3310-00	FRONT FLASHER LIGHT ASSY 1	1				
2	1B9-H3311-00	.BULB, FLASHER	1				
3	1B9-H331E-00	.CORD ASSY	1				
4	90167-04X00	SCREW, TAPPING	2				
5	1B9-H3320-00	FRONT FLASHER LIGHT ASSY 2	1				
6	1B9-H3311-00	.BULB, FLASHER	1				
7	1B9-H332E-00	.CORD ASSY	1				
8	90167-04X00	SCREW, TAPPING	2				



1C01300-D330

FIG. 34 METER



REF. NO.	PART NO.	DESCRIPTION	1C01					REMARKS
1	1C0-H3510-00	SPEEDOMETER ASSY	1					UR KWH
	1C0-H3510-10	SPEEDOMETER ASSY	1					UR MPH.
2	90167-04X00	SCREW, TAPPING	4					



1C01300-D340

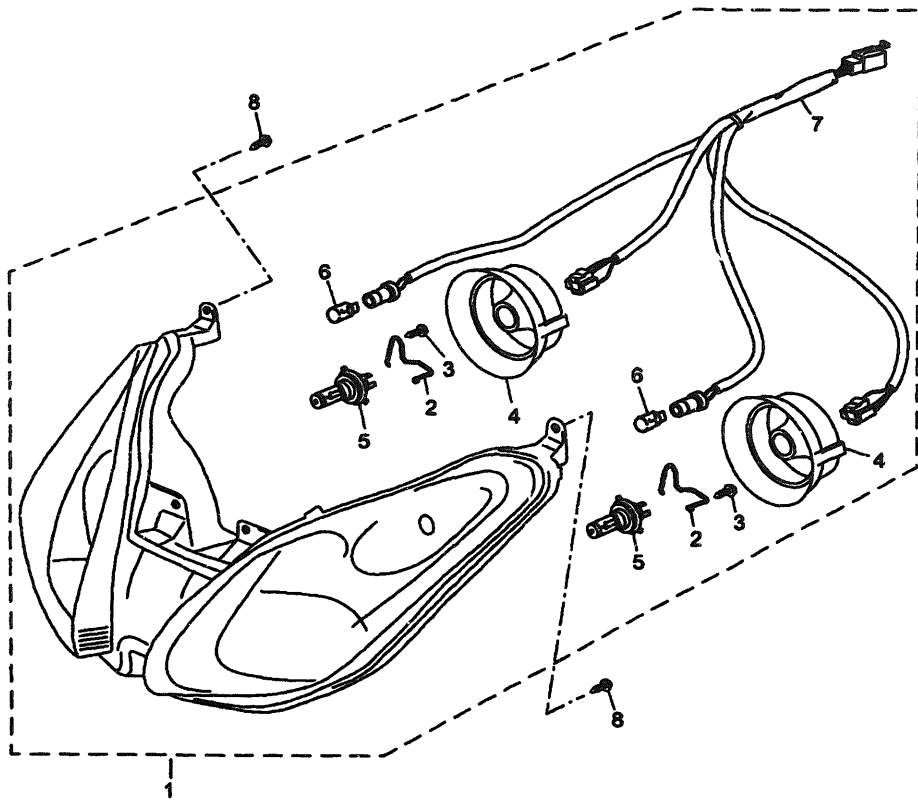
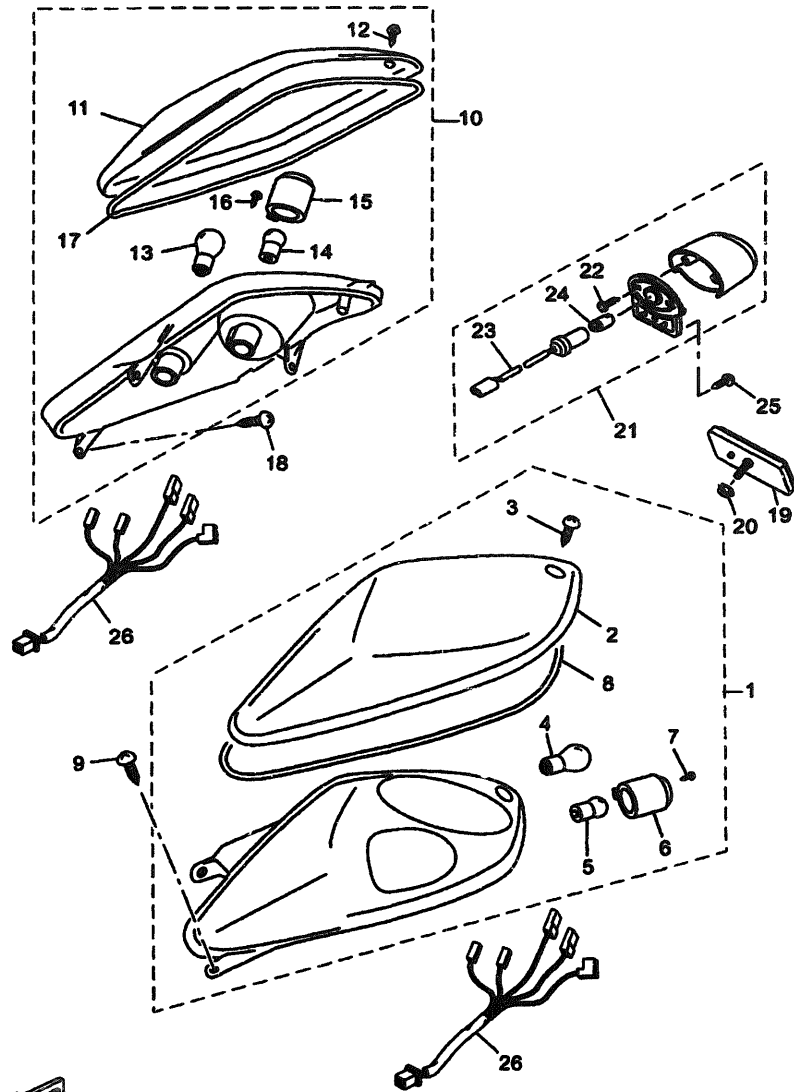


FIG. 35 HEADLIGHT

REF. NO.	PART NO.	DESCRIPTION	1C01				REMARKS
1	1B9-H4310-00	HEADLIGHT UNIT ASSY	1				
2	1B9-H4539-00	.SPRING, SOCKET	2				
3	1B9-H4526-00	.SCREW	2				
4	1B9-H4397-00	.COVER, SOCKET	2				
5	1B9-H4114-00	.BULB, HEADLIGHT	2				
6	5DS-H4744-00	.BULB (12V-5W)	2				
7	1B9-H414A-00	.CORD ASSY	1				
8	90167-04X00	SCREW, TAPPING	6				



1C01300-D350



1C01300-D360

FIG. 36 TAILLIGHT

REF. NO.	PART NO.	DESCRIPTION	1C01				REMARKS
1	1B9-H4710-00	TAILLIGHT UNIT ASSY	1				
2	1B9-H4721-00	.LENS, TAILLIGHT	1				
3	1B9-H3333-00	.SCREW, LENS FITTING	1				
4	4BA-H4714-00	.BULB	1				
5	3TH-H3311-00	.BULB, FLASHER	1				
6	5RW-H3332-00	.LENS, FLASHER	1				
7	5RN-H3333-00	.SCREW, LENS FITTING	1				
8	1B9-H4545-00	.GASKET, LENS	1				
9	90167-04X00	SCREW, TAPPING	3				
10	1B9-H4730-00	TAILLIGHT UNIT ASSY	1				
11	1B9-H4733-00	.LENS, TAILLIGHT	1				
12	1B9-H3333-00	.SCREW, LENS FITTING	1				
13	4BA-H4714-00	.BULB	1				
14	3TH-H3311-00	.BULB, FLASHER	1				
15	5RW-H3332-00	.LENS, FLASHER	1				
16	5RN-H3333-00	.SCREW, LENS FITTING	1				
17	1B9-H4545-00	.GASKET, LENS	1				
18	90167-04X00	SCREW, TAPPING	3				
19	4BA-H5130-00	REAR REFLECTOR ASSY	1				
20	9570M-05500	NUT, FLANGE	1				
21	5DS-H4740-00	LICENCE LIGHT ASSY	1				
22	5DS-H4726-00	.SCREW	2				
23	5DS-H4547-00	.CORD, LICENCE LIGHT	1				
24	5DS-H4744-00	.BULB (12V-5W)	1				
25	90167-03X00	SCREW, TAPPING	1				
26	1B9-H4533-00	CORD, TAILLIGHT A	2				

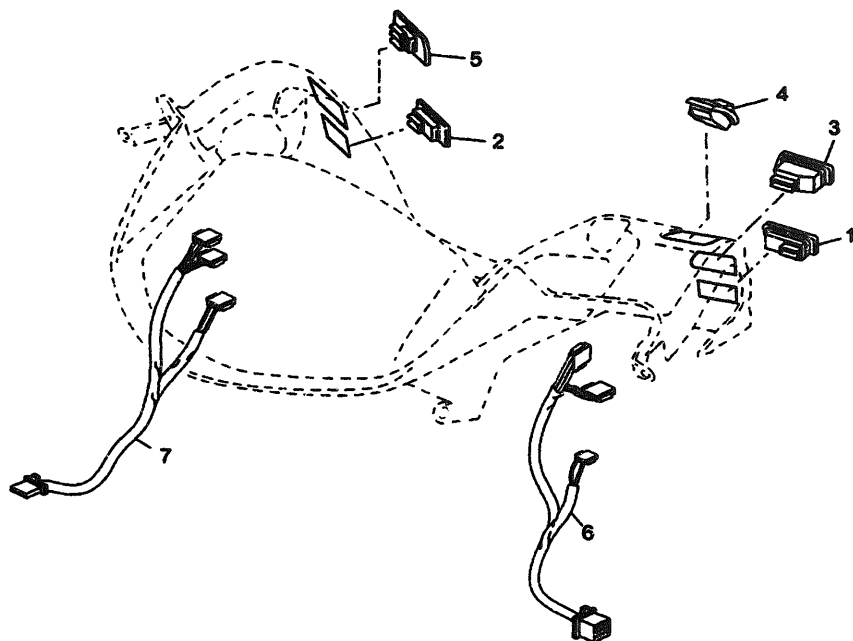
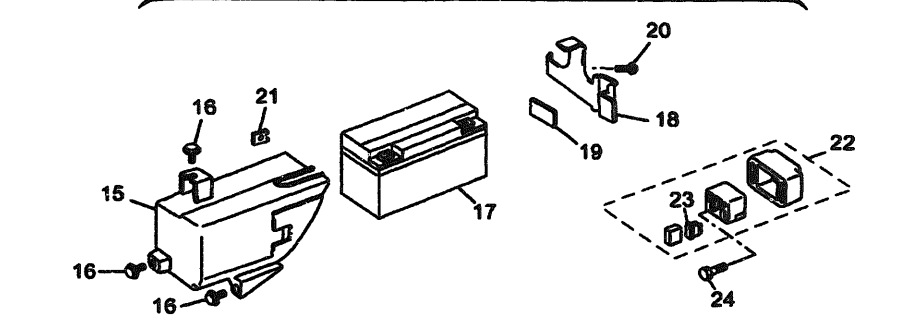
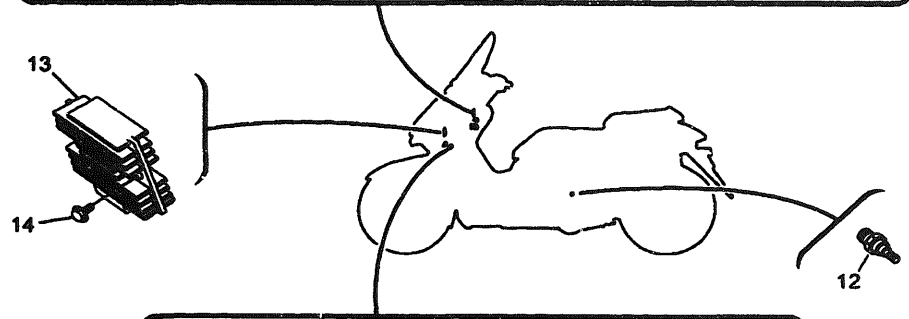
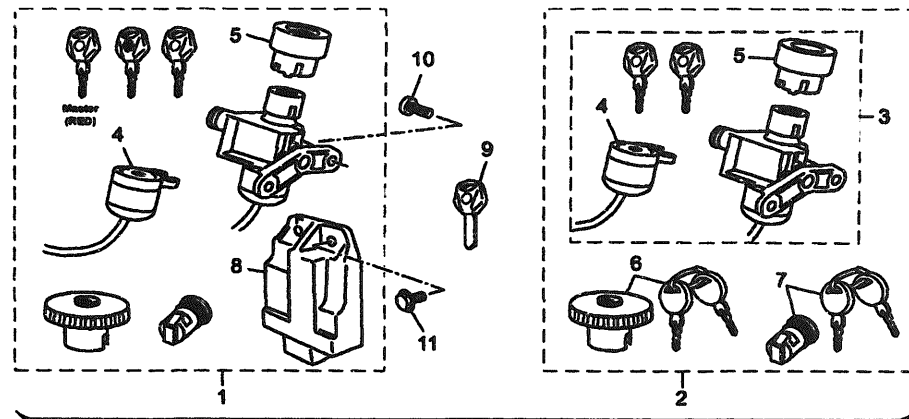


FIG. 37 HANDLE SWITCH & LEVER

REF. NO.	PART NO.	DESCRIPTION	1C01					REMARKS
1	5AD-H396U-10	SWITCH	1					
2	5AD-H3970-10	STARTER SWITCH ASSY	1					
3	5AD-H3976-10	SWITCH, HANDLE 1	1					
4	1B9-H3362-00	HAZARD FLASHER SWITCH	1					
5	1B9-H3950-00	BEAM SWITCH ASSY	1					
6	1B9-H2616-00	CORD, SWITCH LH.	1					
7	1C0-H2626-00	CORD, SWITCH RH.	1					



1C01300-D370



FWD

1C01300-D380

FIG. 38 ELECTRICAL 1

REF. NO.	PART NO.	DESCRIPTION	1C01				REMARKS
1	1C0-WH250-00	MAIN SW. INMOBILIZER KIT	1				
2	1C0-WH25A-00	.MAIN SWITCH KIT	1				
3	1C0-WH25B-00	..MAIN SWITCH ASSY	1				
4	1C0-WH814-00	...ANTENA ASSY & FITTING SET	1				
5	1C0-H2552-00	...CAP, SWITCH	1				
6	1B9-WF461-00	..TANK CAP BODY ASSY	1				
7	4MJ-F1780-01	..LOCK ASSY	1				
8	1C0-H5540-00	.C.D.I. UNIT ASSY	1				
9	1C0-H2511-09	KEY, MAIN SWITCH	1				
10	90109-06X03	BOLT	2				
11	90105-06X00	BOLT, FLANGE	2				
12	46X-83591-00	THERMO UNIT	1				
13	4XY-81960-00	RECTIFIER & REGULATOR ASSY	1				
14	9582N-06020	BOLT, FLANGE	2				
15	1B9-H212B-00	BOX, BATTERY 1	1				
16	90105-06X05	BOLT, FLANGE	3				
17	3PK-82100-01	BATTERY ASSY (YTX9-BS 12V-8AH)	1				
18	1B9-H2128-00	BRACKET, BATTERY	1				
19	4MJ-F4183-00	DAMPER, LOCATING 3	1				
20	90167-04X00	SCREW, TAPPING	1				
21	5DS-F8317-00	NUT, EMBLEM	1				
22	4YR-81940-02	STARTER RELAY ASSY	1				
23	1AE-82151-00	.FUSE (30A-BL)	2				
24	9701L-06008	BOLT	2				

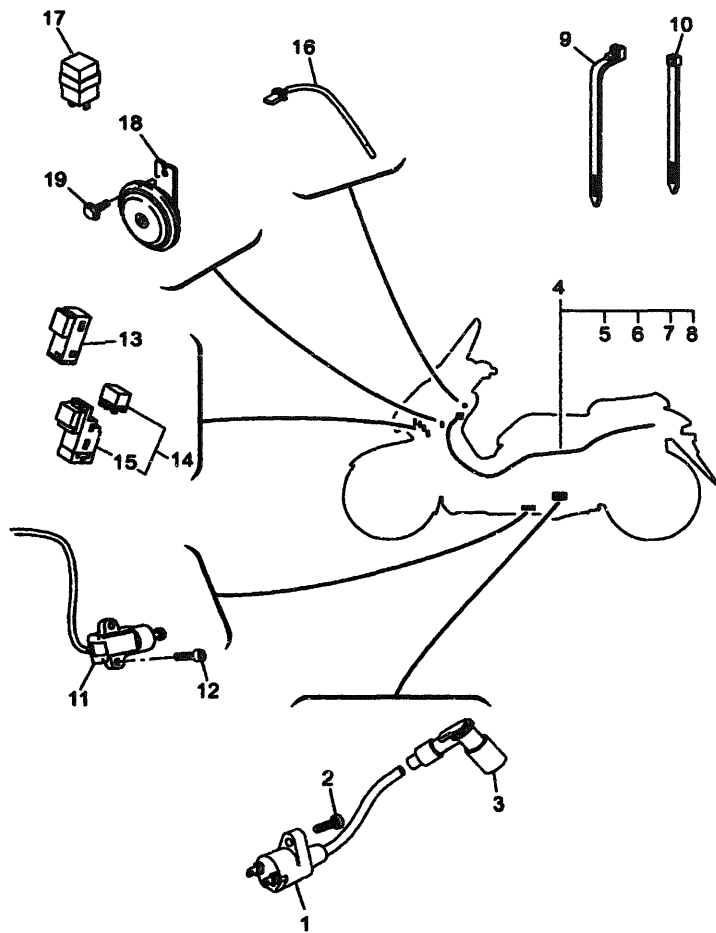


FIG. 39 ELECTRICAL 2

REF. NO.	PART NO.	DESCRIPTION	1C01					REMARKS
1	1C0-H2310-00	IGNITION COIL ASSY	1					
2	90110-05X05	BOLT, HEXAGON SOCKET HEAD	1					
3	5SE-H2370-00	PLUG CAP ASSY	1					
4	1C0-H2590-00	WIRE HARNESS ASSY	1					
5	5SE-H1980-00	.DIODE ASSY	1					
6	1B9-H2151-00	.FUSE	3					15 A
7	1B9-H2151-10	.FUSE	4					5 A
8	1B9-H2151-20	FUSE	2					7,5 A
9	90464-80X00	CLAMP	10					
10	90464-50X03	CLAMP	10					
11	3LD-82566-50	SWITCH, SIDE STAND	1					
12	90110-05822	BOLT, HEXAGON SOCKET HEAD	2					
13	4HC-81950-00	RELAY ASSY	1					
14	5EA-81950-20	RELAY ASSY	2					
15	5EA-81952-00	.HOLDER, RELAY	1					
16	1B9-H5881-00	SENSOR, EXT, TEMP.	1					
17	5SE-H3350-10	FLASHER RELAY ASSY	1					
18	1D0-H3371-00	HORN	1					
19	9580M-06012	BOLT, FLANGE	1					

1C01300-D390

CONTENTS

CYLINDER	B2
CRANKSHAFT & PISTON	B3
VALVE	B4
CAMSHAFT & CHAIN	B5
WATER PUMP	B6
RADIATOR & HOSE	B7
OIL PUMP	B9
INTAKE	B10
CARBURETOR	B11
EXHAUST	B13
CRANKCASE	B15
CRANKCASE COVER 1	C3
STARTER	C5
CLUTCH	C6
TRANSMISSION	C8
FRAME	C9
FENDER	C11
SIDE COVER	C12
REAR ARM & SUSPENSION	C13
FRONK FORK	C14
FUEL TANK	D2
SEAT	D4
FRONT WHEEL	D6
FRONT BRAKE CALIPER	D7
REAR WHEEL	D8
REAR BRAKE CALIPER	D9
STEERING HANDLE & CABLE	D10
FRONT MASTER CYLINDER	D12
STAND & FOOTREST	D14
LEG SHIELD	E2
GENERATOR	E4
STARTING MOTOR	E5
FLASHER LIGHT	E6
METER	E7

HEADLIGHT	E8
TAILLIGHT	E9
HANDLE SWITCH & LEVER	E10
ELECTRICAL 1	E11
ELECTRICAL 2	E12

NUMERICAL INDEX	M1
-----------------------	----

NUMERICAL INDEX

PART NO.	GRID NO.	PART NO.	GRID NO.	PART NO.	GRID NO.	PART NO.	GRID NO.	PART NO.	GRID NO.	PART NO.	GRID NO.
4GA-1111F-00	B5	4HC-15378-01	B15	1C0-E1400-01	B3	1C0-E4397-00	B11	1C0-E4990-00	B11	1B9-F1511-00-P1	C11
4G0-11133-10	B2	5GM-15407-00	C3	1C0-E1603-00	B3	1C0-E4397-10	B11	1C0-E4991-00	B12	1B9-F1511-00-P2	C11
4KB-11145-00	B5	4HC-15453-00	C3	1C0-E1605-00	B3	1C0-E4397-20	B12	5SE-E5100-01	B15	1B9-F1511-00-P3	C11
59V-11167-00	B9	5GM-15471-00	C3	1C0-E1607-00	B3	1C0-E4397-30	B12	5HW-E5189-00	C4	1B9-F1511-00-P4	C11
4HC-11351-01	B2	3KJ-15481-00	C3	1C0-E1631-00	B3	1C0-E4411-00	B10	5HW-E5199-00	B15	1B9-F1552-00	C11
5GM-12111-00	B4	4HC-15492-00	B15	5SE-E1633-00	B3	1B9-E4412-00	B10	5SE-E5316-00	C3	1B9-F1611-00	C11
4HC-12113-00	B4	2HT-15521-00	C5	1C0-E1636-00	B3	1B9-E441A-00	B10	5SE-E5326-00	C3	1C0-F1644-00	C13
	B4	4HC-15590-02	C5	1C0-E1639-00	B3	1C0-E4437-00	B10	5SE-E5335-00	C3	1C0-F1649-00	C11
4HC-12114-00	B4	5GM-17649-00	C2	1C0-E2151-00	B4	1B9-E4452-00	B10	5SE-E5337-00	C3	1B9-F1685-00	C11
	B4	5GJ-21780-01	D14	5SE-E2170-00	B5	1C0-E4453-00	B10	5SE-E5339-00	C3	1B9-F 71L-00	E3
4G0-12116-01	B4	1J7-23415-00	C15	5HW-E2231-00	B5	5DS-E446M-00	B10	5DS-E5351-00	B9	1B9-F171M-00	E3
4G0-12117-00	B4	4H7-23441-10	D10	5HW-E2241-00	B5	1C0-E4534-00	B11	3VL-E5363-00	B15	1B9-F1721-00-P1	C12
4G0-12118-00	B4	1B9-23442-00	D10	1B9-E2405-00	B7	1C0-E4562-00	B11	5SE-E5411-00	C3	1B9-F1721-00-P2	C12
5H0-12119-00	B4	5GM-24492-00	D2	1C0-E2413-00	B7	5SE-E4711-10	B13	1C0-E5417-00	C3	1B9-F1721-00-P3	C12
5H0-12121-01	B4	5GM-2580W-01	D9	5HW-E2420-01	B6	1B9-E4718-10	B13	5SE-E5421-00	B15	1B9-F1721-00-P4	C12
5H0-12146-00	B4	5EB-25828-00	D9	5HW-E2421-00	B6	1S6-E4799-10	B13	5SE-E5431-00	C3	1B9-F1731-00-P1	C12
3Y1-12156-00	B4	5GM-25828-00	D9	5HW-E2422-00	B6	5SE-E4803-00	B14	5SE-E5451-00	C3	1B9-F1731-00-P2	C12
4HC-12157-00	B5	5PW-25914-00	D9	1B9-E243A-00	B8	1C0-E482K-10	B14	5SE-E5461-00	B15	1B9-F1731-00-P3	C12
2NX-12159-00	B4	4TT-25919-00	D9	1C0-E243E-00	B8	1C0-E4881-00	B13	5SE-E5472-00	C3	1B9-F1731-00-P4	C12
4HC-12176-00	B5	4TT-25937-00	D9	1C0-E243F-00	B8	5SE-E4882-00	B14	5SE-E5491-00	C3	1B9-F1741-00-P1	C12
2UJ-12210-01	B5	4YR-26240-02	D10	1C0-E244G-00	B8	1C0-E4901-02	B11	5SE-E5499-00	C3	1B9-F1741-00-P2	C12
4RF-12213-00	B5	4YR-26241-02	D10	1B9-E244H-00	B7	1C0-E4907-00	B12	1C0-E5512-00	C5	1B9-F1741-00-P3	C12
4HC-12411-00	B7	51J-26246-01	D10	5HW-E2450-00	B6	1C0-E490A-00	B12	1C0-E5517-00	C5	1B9-F1741-00-P4	C12
5GM-12426-00	B6	4HC-27112-00	D14	1C0-E2460-00	B7	1C0-E4916-00	B11	5HW-E6111-00	C8	1B9-F1771-00	B8
4HC-12428-10	B6	58K-27112-02	D14	5MF-E2462-01	B7	1C0-E4918-00	B12	5HW-E6151-00	C8	4MJ-F1780-01	E11
11H-12438-10	B6	3VR-27114-00	C9	1C0-E2463B-00	B8	1C0-E4919-00	B11	1C0-E6611-00	C6		E2
4HC-12446-00	B6	4HC-27114-00	D14	1C0-E2576-00	B7	1C0-E491A-00	B11	1C0-E6620-00	C6	1C0-F1781-00	C12
4HC-12459-00	B6	3WP-81826-00	E5	1C0-E2577-00	B7	1C0-E4922-00	B12	1C0-E6626-00	C6	1C0-F1788-00	C12
51Y-13411-00	B9	4XV-8182A-00	E5	5MF-E2591-00	B7	1C0-E4923-00	B11	1C0-E7211-10	C8	1B9-F178L-00	D2
4HC-13475-00	B9	3KS-81840-00	E5	1B9-E2671-00	B7	1C0-E4933-00	B11	1C0-E7411-00	C8	4MJ-F1791-00	E2
5GM-13542-00	B14	11H-81844-00	E5	1B9-E2675-00	B7	1C0-E4934-00	B12	5SE-E7421-00	C8	1B9-F1817-00	B8
2GV-13907-00	D2	1FK-81847-00	E5	5SE-E3300-00	B9	1C0-E4935-00	B12	1C0-E7606-00	C6	1B9-F1871-00	B8
1B9-14451-00	B10	4YR-81940-02	E11	5SE-E3325-00	B9	1C0-E4936-00	B11	1C0-E7611-00	C6	1C0-F2110-00	C13
17W-14462-00	C3	4HC-81950-00	E12	1C0-E3590-00	B10	1C0-E4937-00	B12	1C0-E7623-00	C6	1S6-F2176-00	C13
5GM-14611-10	B13	5EA-81950-20	E12	1C0-E4160-00	B11	1C0-E4937-10	B12	1C0-E7632-00	C6	1B9-F2210-00	C13
3MT-14613-00	B13	5EA-81952-00	E12	1C0-E4196-00	B12	1C0-E4938-00	B11	1C0-E7639-00	C6	4X6-F2216-00	B15
4HC-14628-00	B13	4XY-81960-00	E11	1C0-E4197-00	B12	1C0-E493A-00	B11	5SE-E7641-00	C6		C13
4BH-14714-00	B13	3PK-82100-01	E11	1C0-E4245-00	B12	1C0-E4940-00	B11	1C0-E7644-00	C6	1S6-F2358-00	C13
5GM-14728-00	B13	1AE-82151-00	E11	1C0-E4327-00	B11	1C0-E4943-00	B11	1C0-E7653-00	C6	1S6-F2359-00	C13
5GM-14738-00	B13	3LD-82566-50	E12	1C0-E4327-10	B12	1C0-E4947-00	B11	1C0-E7654-00	C6	1B9-F3102-00	C14
5RB-14758-00	B13	46X-83591-00	E11	1C0-E4327-20	B12	1C0-E4948-00	B11	1C0-E7660-00	C6	1B9-F3103-00	C14
4BD-14766-00	B13	5HW-E1101-00	B2	1C0-E4327-30	B12	1C0-E4952-00	B11	1C0-E7664-00	C6	2C8-F3108-00	C14
5RB-14766-00	B13	5HW-E1160-00	B2	1C0-E4327-40	B12	1C0-E4958-00	B11	1C0-E7670-00	C6		C15
5GM-14815-00	B13	5HW-E1166-00	B2	1C0-E4346-00	B12	1C0-E4967-00	B12	1B9-F1110-01-33	C9	1B9-F3110-00	C14
5GM-1482K-00	B13	5HW-E1181-00	B2	1C0-E4350-00	B12	1C0-E4968-00	B11	1B9-F119F-00	C9		C15
5GM-14871-01	B13	5HW-E1186-00	B2	1C0-E4370-00	B12	1C0-E496A-00	B11	1B9-F1420-00	C9	1B9-F3111-00	C14
4HC-15363-00	C3	5HW-E1187-00	B2	1C0-E4383-00	B11	1C0-E4984-00	B12	1B9-F1480-00	C9		C15
4HC-15371-00	B15	1C0-E1311-00	B2	1C0-E4386-00	B11	1C0-E4985-00	B11	1B9-F1485-00	C9	1B9-F3125-00	C14

NUMERICAL INDEX

PART NO.	GRID NO.	PART NO.	GRID NO.	PART NO.	GRID NO.	PART NO.	GRID NO.	PART NO.	GRID NO.	PART NO.	GRID NO.
1B9-F3125-00	C14	1B9-F4318-00	D2	1B9-F6231-00-P0	D11	1B9-F8336-00	E2	5RW-H3332-00	E9	1B9-W0047-00	D7
1B9-F3126-00	C14	1B9-F471B-00	D4	1B9-F6234-00	D11	1B9-F8345-00-P0	E3	1B9-H3333-00	E9	4TT-W0047-00	D9
1B9-F3136-00	C14	1B9-F4730-00	D4	1B9-F6270-00	D10	1B9-F834V-00	E3		E9	1B9-W0048-00	D7
1B9-F3141-00	C14	1B9-F473R-00	D4	1B9-F6280-00	D10		E3	5RN-H3333-00	E9	5GM-W0048-01	D9
	C15	1B9-F4741-00	D4	1B9-F6290-00	D10	1B9-F8351-00-P1	E2		E9	1B9-W0057-00	D7
1B9-F3144-00	C14	2RN-F4741-00	D2	1B9-F629T-00	D10	1B9-F8351-00-P2	E2	5SE-H3350-10	E12	5GM-W0057-00	D9
	C15		D4	1B9-F629U-00	D10	1B9-F8351-00-P3	E2	1B9-H3362-00	E10	1B9-WF461-00	D2
1B9-F3145-00	C14	1B9-F474A-00	D4	1C0-F6301-00	D10	1B9-F8351-00-P4	E2	1D0-H3371-00	E12		E11
	C14	1B9-F474M-10	D4	1B9-F635H-00	D10	1B9-F835L-00	E3	1C0-H3510-00	E7	1B9-WF591-00	D7
1B9-F3146-00	C14	1B9-F474U-10	D4	1B9-F635J-00	D10	5DS-F8368-00	E3	1C0-H3510-10	E7	1B9-WF592-00	D7
	C14	1B9-F474W-00	D4	1C0-F7111-00	D14	1B9-F836K-00	E3	1S6-H3756-00	D6	1C0-WH250-00	E11
1B9-F3151-00	C14	1B9-F475M-00	D4	1B9-F7311-00	D14	1B9-F837F-00	E2	1B9-H3912-00	D12	1C0-WH25A-00	E11
	C15	1B9-F475M-10	D4	1B9-F7413-00-LK	D14	1B9-F8395-00	E3	1B9-H3922-00	D13	1C0-WH25B-00	E11
1B9-F3153-00	C15	1B9-F476V-00	D4	1B9-F741L-00	C9	1B9-F839K-00	E2	1B9-H3945-00	D12	1C0-WH814-00	E11
1B9-F3154-00	C14	1B9-F4772-10	D4	1B9-F7423-00-LK	D14	1C0-H1410-00	E4		D12	90101-06X12	B5
	C15	1B9-F478D-00	D4	1B9-F742L-00	C9	1C0-H1450-00	E4	1B9-H3950-00	E10	90101-10303	B5
1B9-F3156-00	C14	1B9-F478E-00	D4	1B9-F7431-00	C9	1C0-H1800-00	E5	5AD-H396U-10	E10	90101-10X06	C13
	C15	1B9-F478G-10	D4	1B9-F7441-00	C10	1B9-H1815-00	E5	5AD-H3970-10	E10	90105-06X00	E11
1B9-F3157-00	C14	1B9-F478T-00	D4	1B9-F7454-00	C10	5SE-H1980-00	E12	5AD-H3976-10	E10	90105-06X04	B2
	C15	1B9-F5117-00	D6		C9	1B9-H2128-00	E11	1B9-H4114-00	E8	90105-06X05	E11
1B9-F3158-00	C14	1B9-F5160-00	D6	1B9-F7481-00	D14	1B9-H2129-00	E2	1B9-H414A-00	E8		E5
	C15	3VL-F5170-10	D6	1B9-F7483-00	D15	1B9-H212B-00	E11	1B9-H4310-00	E8	90105-06X06	B2
1B9-F3170-00	C14		D8	1B9-F7484-00	D15	1TK-H2131-00	D5	1B9-H4397-00	E8		B2
	C15	1B9-F5181-00	D6	1B9-F7486-00	D14	1B9-H2151-00	E12	1B9-H4526-00	E8	90105-06X07	C3
1B9-F3171-00	C14	1B9-F5338-00	D8	1B9-F7487-00	D14	1B9-H2151-10	E12	1B9-H4533-00	E9	90105-06X08	B15
	C15	1B9-F580U-00	D7	1B9-F74A8-00	D14	1B9-H2151-20	E12	1B9-H4539-00	E8	90105-06X09	B15
1B9-F3173-00	C14	1B9-F582U-00	D7	1C0-F8100-00	D5	1C0-H2310-00	E12	1B9-H4545-00	E9	90105-06X10	B2
	C15	1B9-F582W-00	D9	1C0-F8116-00	E3	5SE-H2370-00	E12		E9	90105-06X19	B6
1B9-F3181-00	C14	1B9-F583T-00	D12	1C0-F8199-E0	D4	1C0-H2511-09	E11	5DS-H4547-00	E9	90105-06X22	B14
	C15	1B9-F583V-00	D12	1C0-F8199-G0	D4	1B9-H2530-00	D12	1B9-H4710-00	E9	90105-08121	D9
1B9-F3183-00	C14	1B9-F5844-10	D12	1C0-F8199-H0	D4	1B9-H2550-00	D12	4BA-H4714-00	E9	90105-08X06	B15
	C15	1B9-F5852-00	D12	1B9-F8307-00	E2	1C0-H2552-00	E11		E9	90105-08X07	B15
1B9-F3188-00	C14		D12	1B9-F8311-00	E2	5MF-H2558-00	B7	1B9-H4721-00	E9	90105-10X08	C9
	C15	1B9-F5854-00	D12	5DS-F8317-00	C12		B7	5DS-H4726-00	E9	90105-12X01	C9
1B9-F3317-00	D6		D12		C12	1C0-H2560-00	B7	1B9-H4730-00	E9	90109-06030	C3
1B9-F3340-00	C15	1B9-F5855-00	D12		C12	1C0-H2560-10	B7	1B9-H4733-00	E9	90109-065F3	D7
5DS-F3418-00	C15		D12		D10	1C0-H2590-00	E12	5DS-H4740-00	E9	90109-06X03	E11
21L-F3462-00	C15	1B9-F5867-00	D12		D10	1B9-H2616-00	E10	5DS-H4744-00	E8	90109-06X05	C11
1C0-F4110-00	D2	1B9-F5867-10	D12		D14	1C0-H2626-00	E10		E9		C11
1B9-F4112-00	D2	1B9-F5872-10	D12		D15	1B9-H3310-00	E6	4BA-H5130-00	E9		C11
1B9-F411M-00	D2	1C0-F5873-10	D13		E11	1B9-H3311-00	E6	1C0-H5540-00	E11		D4
1C0-F4135-00	D2	5SE-F5876-00	C13		E2		E6	1C0-H5752-00	D2		E2
1B9-F414A-00	D2	1B9-F587A-00	D13		E2	3TH-H3311-00	E9	1C0-H5753-00	D2	90109-08X04	C2
1B9-F416G-00	D2	1B9-F6110-00	D10		E3		E9	1B9-H5881-00	E12	90109-10473	D14
4MJ-F4183-00	E11	1B9-F6141-00	D11		E3	1B9-H331E-00	E6	1B9-W0041-00	D12	90110-05822	E12
1B9-F4191-00	D2	1B9-F6142-00	D11		E3	1B9-H3320-00	E6	1B9-W0041-10	D12	90110-05X02	E4
1C0-F4311-00	D2	1B9-F6213-00	D10	1B9-F631T-00	E2	1B9-H332E-00	E6	1B9-W0045-00	D7	90110-05X05	E12
1C0-F4312-00	D3	1B9-F6215-00	D10	1B9-F8321-00	E2	5RW-H3332-00	E9	5GM-W0046-00	D9	90110-06X27	B7

NUMERICAL INDEX

PART NO.	GRID NO.	PART NO.	GRID NO.	PART NO.	GRID NO.	PART NO.	GRID NO.	PART NO.	GRID NO.	PART NO.	GRID NO.
90110-06X28	B10	90167-04X00	E3	90201-156R4	C8	90464-11004	B14	92907-12600	B13	93603-22X00	B9
90110-06X29	B6		E3	90201-160F6	B3	90464-50X03	B8	9290L-08200	C15	93604-10X00	B5
90110-06X30	B15		E3	90201-16242	B15		D10	93101-10090	B6	94112-15X00	D6
	B5		E3	90201-22X00	D8		E12	93101-14092	C3	94114-14X00	D8
90110-06X31	E4		E3	90201-232K5	C8	90464-50X05	D6	93101-22800	D6	94582-17104	B5
90110-06X45	B6		E6	90202-05180	D11	90464-80X00	E12	93102-25800	C8	94701-00X05	B2
90110-08X03	C5		E6	90202-26X00	C15	90467-07138	B14	93102-28800	C6	95027-06012	D4
90111-04800	C6		E7	90208-21001	C8	90467-09006	B14	93102-30284	B15	95607-06200	B13
90111-04X01	B7		E8	90208-25001	C8	90467-10038	D2	93102-32004	C8	95607-08200	B13
90111-06015	B13		E9	90215-06184	B5		D3	93109-41800	C6	95617-06615	B2
90111-06020	B13		E9	90240-04X00	D2	90467-10X01	B8	93210-09165	B4	95707-06500	D12
90111-06X06	B9	90167-05003	C3	90240-06042	C10		B8	93210-14104	B15		D12
90116-08591	B15	90170-06128	B4		C9	90467-11108	B7	93210-15171	B5	9570M-05500	E9
90116-08X03	B2	90170-16X00	B3	90241-10015	D4	90467-12X00	B10	93210-16275	B15	9570N-06500	D2
90119-05193	D11	90170-20386	D10	90280-03017	D10	90467-13062	B13		B6	95807-06020	B14
90119-06056	E3	90170-36X02	C7	90280-05013	B3	90467-13064	B2	93210-16325	C4	9580L-06016	C13
90119-06118	D14	90176-08026	B2	90338-09800	D4	90467-16X00	B14	93210-19123	C3	9580M-06012	C11
	E2	90179-05523	D11	90340-12X00	B15	90467-16X02	B13	93210-27672	C2		D13
90119-06X02	B8	90179-14469	C6	90387-04X00	D2	9046E-10004	D2	93210-33133	B6		E12
	B8		C6	90387-064H8	C10	9046E-10050	D4	93210-347A1	B9	9580M-06016	C13
90149-06X04	B7	90179-25X00	C15		C9	9046E-12X00	B3	93210-34X00	B10	9580M-06025	B7
90149-08814	D9	90183-06816	C12	90387-06500	D2	90480-01141	C9	93210-43X01	C6	9580M-06050	C11
90157-05079	C10		C12	90387-06X04	C11	90480-10332	B13	93210-57634	B2	95817-10045	C9
	C9	90183-06X01	C11		C11	90480-13X01	B10	93210-92448	B2	9581L-06030	C14
90159-06816	C11	90183-06X02	F14	90387-06X24	B7	90480-15363	B7	93211-17800	C6	9581L-08030	D7
90167-03X00	D10	90185-06823	D4	90387-06X27	D2	90480-20X00	B7	93306-000Y0	B6	9581M-08032	D4
	E2	90185-10037	D14	90387-06X31	B10	90501-15001	C10	93306-005Y6	B5	95827-06012	D2
	E9	90185-10154	C9	90387-1006J	B15		C9	93306-202YT	B5	9582M-06025	C9
90167-04X00	C11	90185-10840	C13	90387-10X05	C9	90501-18576	B9	93306-202YU	D6	9582M-08012	E2
	C12	90185-12072	C9	90337-15X09	D6	90501-50X00	C6	93306-205X8	C8		E2
	C12	90185-14166	C13	90387-17X01	C13	90506-23509	D14	93306-272Y1	C8	9582M-08016	C10
	D10	90201-047R9	B7	90387-17X02	C13	90506-26X01	D14	93306-302X2	C8		C9
	D10	90201-04802	C6	90387-19800	C6	90506-40508	D14	93306-303X1	C8	9582M-10040	C13
	D11	90201-060A3	B7	90401-10X04	D12	90508-08X00	D2	93306-30603	C2	9582N-06020	E11
	D11	90201-06X06	B10		D13	91317-08030	D10	93311-415Y0	C6	9582N-08030	C13
	D11	90201-06X09	B2	90430-08X00	B15	9131L-05010	D10	93399-99931	C15	9700N-06016	D2
	D14		B6	90430-12213	B15	9131N-06025	B10	93399-999Y2	C15	97017-12090	B13
	D14	90201-08609	B2	90445-13X00	B15	91401-16012	C10	93410-10X00	B6	9701L-05012	D12
	D14	90201-08X10	B6	90446-14X00	B10		C9	93410-12X00	C5	9701L-06008	E11
	D14		B9	90450-18X01	B7	91810-14X00	B15	93410-16X00	B15	9701L-08035	C15
	D14	90201-10118	D12	90450-27X00	B7		B15	93430-08X02	C6	97607-04216	D12
	D15		D13		B8		B2	93430-12008	D14		D13
	D2	90201-105A2	C9		B8		C3	93440-10085	B2	97707-50125	B10
	E11		C9		B8	92017-06012	B13	93450-06X00	B9	9770M-40510	D14
	E2	90201-10X08	B5		B8	92017-06025	D12	93501-04011	C10	9770M-40512	E2
	E2	90201-10X11	C13	90450-60X01	B10		D13		C9	98507-06020	C3
	E2	90201-12166	C5	90460-52210	B10	92907-06200	B13	93603-12X01	B9	9850M-05010	D10
	E3	90201-144M8	C6	90464-05X00	D6	92907-06600	C3	93603-22X00	B6	98780-04012	D12

NUMERICAL INDEX

<u>PART NO.</u>	<u>GRID NO.</u>
98780-04012	D13
9890L-06016	C12
	C12
99001-04600	D14
99001-07600	B6
99009-25400	C8
99236-00080	C12
	E2
99237-00080	C12
	E2
99530-10114	C3
99530-14016	B7